

mRFA -Ergebnisse

XL3t-69288

Reading No 1
Mode Mining
Time 2019-12-07 11:16
Duration 120.54
Units ppm
Sigma Value 2
Sequence Final
Flags
INV NR Gm1198
OBJEKT TAFELGEMAELENDE
MATERIAL HOLZ METALL FASSUNG
ANALYSESTELLE P1 GOLDGRUND
MESSAUFBAU STATIV
FILTER m30lo30hi30li30
User Login Raquet



Ele	ppm	+/-	$\pm 2\sigma$
Ce	-339.000	+/-	98.335
La	1.000	+/-	45.133
Ba	1.000	+/-	48.376
Sb	18.959	+/-	17.402
Sn	11.675	+/-	9.059
Cd	1.000	+/-	6.371
Ag	1.000	+/-	6.288
Bal	702166.313	+/-	1436.154
Nb	1.000	+/-	3.137
Zr	1.000	+/-	12.677
Y	1.000	+/-	2.743
Sr	507.671	+/-	8.409
Rb	27.833	+/-	7.169
Th	1.000	+/-	186.950
Bi	1.000	+/-	161.140
Au	3964.531	+/-	62.402
As	208.107	+/-	27.911
Se	1.000	+/-	7.794
Pb	1422.136	+/-	26.758
Hg	1.000	+/-	5.651
Zn	99.520	+/-	15.099
Cu	1.000	+/-	20.633
Ni	1.000	+/-	26.219
Co	1.000	+/-	20.852
Fe	370.899	+/-	46.436
Mn	1.000	+/-	61.873
Cr	115.011	+/-	24.489
V	1.000	+/-	16.714
Ti	1.000	+/-	112.438
Ca	228828.828	+/-	1360.480
K	707.857	+/-	147.536
Al	1950.509	+/-	1167.861
P	43746.766	+/-	481.978
Si	929.729	+/-	557.690
Cl	1301.278	+/-	44.259
S	13622.422	+/-	161.584
Mg	1.000	+/-	13827.499

mRFA -Ergebnisse

XL3t-69288

Reading No 2
Mode Mining
Time 2019-12-07 11:21
Duration 120.30
Units ppm
Sigma Value 2
Sequence Final
Flags
INV NR Gm1198
OBJEKT TAFELGEMAELEN
MATERIAL HOLZ METALL FASSUNG
ANALYSESTELLE P2 GOLDGRUND
MESSAUFBAU STATIV
FILTER m30lo30hi30li30
User Login Raquet



Ele	ppm	+/-	$\pm 2\sigma$
Ce	-339.000	+/-	93.739
La	1.000	+/-	43.061
Ba	1.000	+/-	46.138
Sb	1.000	+/-	15.612
Sn	1.000	+/-	9.119
Cd	1.000	+/-	6.805
Ag	1.000	+/-	5.143
Bal	637012.813	+/-	1734.972
Nb	1.000	+/-	3.332
Zr	1.000	+/-	13.456
Y	1.000	+/-	2.948
Sr	566.546	+/-	8.808
Rb	24.430	+/-	7.347
Th	1.000	+/-	198.642
Bi	1.000	+/-	175.249
Au	3879.794	+/-	60.490
As	284.823	+/-	31.026
Se	1.000	+/-	7.688
Pb	1851.763	+/-	30.536
Hg	1.000	+/-	5.518
Zn	112.618	+/-	14.921
Cu	29.922	+/-	13.134
Ni	1.000	+/-	24.950
Co	1.000	+/-	20.101
Fe	515.355	+/-	49.061
Mn	1.000	+/-	69.613
Cr	78.300	+/-	26.419
V	1.000	+/-	17.978
Ti	1.000	+/-	155.320
Ca	252329.656	+/-	1454.546
K	706.009	+/-	156.586
Al	1527.727	+/-	1453.193
P	43149.551	+/-	503.709
Si	3247.201	+/-	642.303
Cl	865.570	+/-	42.558
S	15016.351	+/-	178.978
Mg	38801.453	+/-	16595.264

mRFA -Ergebnisse

XL3t-69288

Reading No 3
Mode Mining
Time 2019-12-07 11:32
Duration 120.43
Units ppm
Sigma Value 2
Sequence Final
Flags
INV NR Gm1198
OBJEKT TAFELGEMAELEN
MATERIAL HOLZ METALL FASSUNG
ANALYSESTELLE P3 NIMBUS HEILIGE
MESSAUFBAU STATIV
FILTER m30lo30hi30li30
User Login Raquet



Ele	ppm	+/-	$\pm 2\sigma$
Ce	-339.000	+/-	108.643
La	1.000	+/-	49.798
Ba	1.000	+/-	53.489
Sb	1.000	+/-	18.405
Sn	1.000	+/-	8.921
Cd	1.000	+/-	6.188
Ag	6.333	+/-	4.764
Bal	768784.500	+/-	1340.350
Nb	11.245	+/-	9.299
Zr	1.000	+/-	36.071
Y	1.000	+/-	7.950
Sr	455.823	+/-	9.531
Rb	16.153	+/-	16.059
Th	1.000	+/-	491.754
Bi	1.000	+/-	521.633
Au	2752.443	+/-	61.620
As	3087.311	+/-	91.566
Se	1.000	+/-	12.450
Pb	10634.166	+/-	139.414
Hg	1.000	+/-	10.127
Zn	152.109	+/-	16.237
Cu	114.122	+/-	17.705
Ni	1.000	+/-	29.524
Co	1.000	+/-	40.147
Fe	4428.598	+/-	130.684
Mn	97.133	+/-	70.094
Cr	79.456	+/-	24.876
V	1.000	+/-	27.189
Ti	198.428	+/-	122.808
Ca	139127.500	+/-	1358.081
K	2424.768	+/-	172.902
Al	5069.545	+/-	1114.000
P	11999.177	+/-	287.610
Si	24172.020	+/-	797.929
Cl	3672.594	+/-	71.192
S	22716.586	+/-	279.002
Mg	1.000	+/-	13125.104

mRFA -Ergebnisse

XL3t-69288

Reading No 4
Mode Mining
Time 2019-12-07 11:36
Duration 121.60
Units ppm
Sigma Value 2
Sequence Final
Flags
INV NR Gm1198
OBJEKT TAFELGEMAELEN
MATERIAL HOLZ METALL FASSUNG
ANALYSESTELLE P4 NIMBUS PAULUS
MESSAUFBAU STATIV
FILTER m30lo30hi30li30
User Login Raquet



Ele	ppm	+/-	$\pm 2\sigma$
Ce	-339.000	+/-	100.819
La	1.000	+/-	46.077
Ba	1.000	+/-	49.399
Sb	1.000	+/-	16.721
Sn	1.000	+/-	12.805
Cd	1.000	+/-	10.190
Ag	5.991	+/-	4.464
Bal	787718.125	+/-	1242.518
Nb	17.761	+/-	9.511
Zr	1.000	+/-	36.965
Y	1.000	+/-	8.162
Sr	361.702	+/-	8.273
Rb	17.175	+/-	16.315
Th	1.000	+/-	497.740
Bi	1.000	+/-	541.210
Au	2484.613	+/-	57.867
As	3396.127	+/-	95.451
Se	1.000	+/-	16.691
Pb	11637.932	+/-	151.836
Hg	1.000	+/-	9.770
Zn	122.673	+/-	14.825
Cu	91.824	+/-	16.681
Ni	1.000	+/-	28.362
Co	1.000	+/-	43.590
Fe	6252.862	+/-	156.452
Mn	1.000	+/-	99.993
Cr	54.522	+/-	24.594
V	1.000	+/-	29.293
Ti	431.617	+/-	116.922
Ca	102280.531	+/-	1083.005
K	2054.644	+/-	157.005
Al	6261.839	+/-	1027.287
P	14309.569	+/-	300.969
Si	32696.332	+/-	863.280
Cl	3715.113	+/-	69.839
S	26089.113	+/-	320.435
Mg	1.000	+/-	9342.537

mRFA -Ergebnisse

XL3t-69288

Reading No 5
Mode Mining
Time 2019-12-07 11:45
Duration 121.29
Units ppm
Sigma Value 2
Sequence Final
Flags
INV NR Gm1198
OBJEKT TAFELGEMAELEN
MATERIAL HOLZ METALL FASSUNG
ANALYSESTELLE P5 BORTE PAULUS
MESSAUFBAU STATIV
FILTER m30lo30hi30li30
User Login Raquet



Ele	ppm	+/-	$\pm 2\sigma$
Ce	-339.000	+/-	111.361
La	1.000	+/-	50.798
Ba	1.000	+/-	54.393
Sb	1.000	+/-	18.206
Sn	1.000	+/-	13.831
Cd	1.000	+/-	6.372
Ag	1.000	+/-	6.899
Bal	776814.438	+/-	1398.245
Nb	19.610	+/-	11.408
Zr	1.000	+/-	41.971
Y	1.000	+/-	9.832
Sr	403.651	+/-	9.447
Rb	1.000	+/-	26.653
Th	1.000	+/-	590.501
Bi	1.000	+/-	616.320
Au	2260.382	+/-	58.591
As	3974.237	+/-	112.912
Se	1.000	+/-	12.089
Pb	14667.671	+/-	200.379
Hg	1.000	+/-	10.637
Zn	113.695	+/-	14.952
Cu	226.005	+/-	21.471
Ni	1.000	+/-	30.001
Co	1.000	+/-	46.766
Fe	6294.539	+/-	165.800
Mn	1.000	+/-	113.885
Cr	64.944	+/-	24.172
V	23.047	+/-	20.873
Ti	332.009	+/-	114.634
Ca	100463.820	+/-	1145.958
K	2346.908	+/-	163.634
Al	6777.979	+/-	1083.209
P	14432.070	+/-	309.061
Si	28653.906	+/-	825.426
Cl	3807.454	+/-	73.228
S	26327.047	+/-	344.066
Mg	11996.678	+/-	10167.217

mRFA -Ergebnisse

XL3t-69288

Reading No 6
Mode Mining
Time 2019-12-07 11:52
Duration 120.02
Units ppm
Sigma Value 2
Sequence Final
Flags
INV NR Gm1198
OBJEKT TAFELGEMAELEN
MATERIAL HOLZ METALL FASSUNG
ANALYSESTELLE P6 SCHRAEGE
MESSAUFBAU STATIV
FILTER m30lo30hi30li30
User Login Raquet



Ele	ppm	+/-	$\pm 2\sigma$
Ce	-339.000	+/-	106.866
La	1.000	+/-	48.944
Ba	1.000	+/-	52.682
Sb	1.000	+/-	17.638
Sn	1.000	+/-	10.768
Cd	8.690	+/-	7.106
Ag	505.297	+/-	15.545
Bal	753663.938	+/-	1361.966
Nb	9.799	+/-	7.963
Zr	1.000	+/-	31.175
Y	1.000	+/-	6.688
Sr	407.384	+/-	8.435
Rb	1.000	+/-	19.845
Th	1.000	+/-	425.525
Bi	1.000	+/-	458.254
Au	1475.862	+/-	42.248
As	2473.983	+/-	78.092
Se	1.000	+/-	9.913
Pb	8347.283	+/-	107.454
Hg	1.000	+/-	7.775
Zn	103.985	+/-	13.046
Cu	132.223	+/-	17.685
Ni	1.000	+/-	28.604
Co	1.000	+/-	32.780
Fe	2634.195	+/-	98.237
Mn	1.000	+/-	101.050
Cr	52.506	+/-	23.868
V	1.000	+/-	25.285
Ti	313.060	+/-	116.786
Ca	161808.031	+/-	1437.308
K	3662.321	+/-	200.623
Al	5356.736	+/-	1197.928
P	9082.980	+/-	259.923
Si	24563.887	+/-	812.018
Cl	4927.902	+/-	83.141
S	20469.875	+/-	246.244
Mg	1.000	+/-	17538.773

mRFA -Ergebnisse

XL3t-69288

Reading No 7
Mode Mining
Time 2019-12-07 11:57
Duration 120.35
Units ppm
Sigma Value 2
Sequence Final
Flags
INV NR Gm1198
OBJEKT TAFELGEMAELEN
MATERIAL HOLZ METALL FASSUNG
ANALYSESTELLE P7 SCHRAEGE
MESSAUFBAU STATIV
FILTER m30lo30hi30li30
User Login Raquet



Ele	ppm	+/-	$\pm 2\sigma$
Ce	88.258	+/-	231.941
La	112.556	+/-	104.739
Ba	1.000	+/-	177.530
Sb	1.000	+/-	35.040
Sn	1.000	+/-	23.683
Cd	1.000	+/-	11.692
Ag	614.168	+/-	29.620
Bal	750014.750	+/-	2646.089
Nb	1.000	+/-	19.799
Zr	1.000	+/-	70.785
Y	1.000	+/-	19.856
Sr	1.000	+/-	25.312
Rb	1.000	+/-	35.506
Th	1.000	+/-	994.207
Bi	1.000	+/-	777.742
Au	1.000	+/-	174.226
As	5529.698	+/-	181.167
Se	1.000	+/-	28.377
Pb	14025.891	+/-	290.377
Hg	36615.246	+/-	620.408
Zn	789.842	+/-	85.217
Cu	72.180	+/-	32.855
Ni	1.000	+/-	102.387
Co	64.309	+/-	48.812
Fe	208.421	+/-	95.156
Mn	242.443	+/-	126.453
Cr	1.000	+/-	38.158
V	1.000	+/-	38.057
Ti	1.000	+/-	156.952
Ca	109464.852	+/-	1575.194
K	1102.439	+/-	228.467
Al	1648.475	+/-	1182.846
P	18035.371	+/-	401.137
Si	10575.036	+/-	652.018
Cl	3864.449	+/-	89.349
S	46591.660	+/-	645.250
Mg	1.000	+/-	13351.647

mRFA -Ergebnisse

XL3t-69288

Reading No 8
Mode Mining
Time 2019-12-07 12:07
Duration 120.98
Units ppm
Sigma Value 2
Sequence Final
Flags
INV NR Gm1198
OBJEKT TAFELGEMAELEN
MATERIAL HOLZ METALL FASSUNG
ANALYSESTELLE P8 SCHRAEGE
MESSAUFBAU STATIV
FILTER m30lo30hi30li30
User Login Raquet



Ele	ppm	+/-	$\pm 2\sigma$
Ce	-339.000	+/-	107.880
La	1.000	+/-	49.644
Ba	1.000	+/-	53.306
Sb	1.000	+/-	24.811
Sn	1.000	+/-	10.423
Cd	10.301	+/-	7.191
Ag	360.698	+/-	13.561
Bal	759940.313	+/-	1397.729
Nb	1.000	+/-	11.913
Zr	1.000	+/-	29.385
Y	1.000	+/-	6.801
Sr	223.640	+/-	8.320
Rb	1.000	+/-	13.120
Th	1.000	+/-	433.770
Bi	1.000	+/-	391.570
Au	1.000	+/-	40.333
As	1771.610	+/-	75.135
Se	1.000	+/-	11.915
Pb	7931.503	+/-	103.847
Hg	4847.144	+/-	64.866
Zn	229.587	+/-	24.391
Cu	27.896	+/-	15.687
Ni	1.000	+/-	31.200
Co	1.000	+/-	27.577
Fe	466.382	+/-	56.703
Mn	1.000	+/-	102.336
Cr	1.000	+/-	27.681
V	17.940	+/-	17.303
Ti	1.000	+/-	98.116
Ca	175411.016	+/-	1486.582
K	419.994	+/-	162.134
Al	1.000	+/-	1040.577
P	6098.006	+/-	225.504
Si	7632.214	+/-	526.814
Cl	1672.850	+/-	49.790
S	19738.854	+/-	232.248
Mg	13200.051	+/-	11736.646

mRFA -Ergebnisse

XL3t-69288

Reading No 9
Mode Mining
Time 2019-12-07 12:12
Duration 120.00
Units ppm
Sigma Value 2
Sequence Final
Flags
INV NR Gm1198
OBJEKT TAFELGEMAELEN
MATERIAL HOLZ METALL FASSUNG
ANALYSESTELLE P9 ROTLACK
MESSAUFBAU STATIV
FILTER m30lo30hi30li30
User Login Raquet



Ele	ppm	+/-	$\pm 2\sigma$
Ce	-339.000	+/-	108.901
La	1.000	+/-	50.053
Ba	1.000	+/-	53.304
Sb	1.000	+/-	17.633
Sn	1.000	+/-	8.811
Cd	7.582	+/-	7.023
Ag	8.205	+/-	4.798
Bal	835615.313	+/-	1111.786
Nb	38.392	+/-	15.614
Zr	1.000	+/-	53.558
Y	1.000	+/-	13.230
Sr	323.501	+/-	8.970
Rb	1.000	+/-	25.576
Th	1.000	+/-	771.765
Bi	1.000	+/-	776.703
Au	1.000	+/-	20.913
As	6198.004	+/-	156.272
Se	13.412	+/-	11.585
Pb	23980.406	+/-	342.221
Hg	1.000	+/-	11.074
Zn	86.179	+/-	10.097
Cu	162.841	+/-	19.823
Ni	1.000	+/-	31.675
Co	1.000	+/-	24.163
Fe	384.585	+/-	55.306
Mn	1.000	+/-	91.673
Cr	1.000	+/-	23.413
V	1.000	+/-	15.281
Ti	1.000	+/-	80.318
Ca	75838.328	+/-	1015.315
K	3860.130	+/-	180.093
Al	6174.022	+/-	934.907
P	3095.048	+/-	176.722
Si	13873.660	+/-	569.276
Cl	3392.087	+/-	71.078
S	26948.252	+/-	398.325
Mg	1.000	+/-	11767.590

mRFA -Ergebnisse

XL3t-69288

Reading No 10
Mode Mining
Time 2019-12-07 12:15
Duration 120.51
Units ppm
Sigma Value 2
Sequence Final
Flags
INV NR Gm1198
OBJEKT TAFELGEMAELEN
MATERIAL HOLZ METALL FASSUNG
ANALYSESTELLE P10 MANTEL PETRUS
MESSAUFBAU STATIV
FILTER m30lo30hi30li30
User Login Raquet



Ele	ppm	+/-	$\pm 2\sigma$
Ce	-339.000	+/-	140.894
La	1.000	+/-	64.403
Ba	1.000	+/-	68.964
Sb	1.000	+/-	25.158
Sn	1.000	+/-	12.727
Cd	1.000	+/-	10.903
Ag	6.496	+/-	5.844
Bal	708299.188	+/-	2234.777
Nb	67.436	+/-	26.010
Zr	1.000	+/-	84.623
Y	1.000	+/-	21.855
Sr	269.709	+/-	10.361
Rb	1.000	+/-	48.980
Th	1.000	+/-	1182.861
Bi	1.000	+/-	1078.787
Au	1.000	+/-	28.000
As	8448.179	+/-	231.735
Se	18.658	+/-	14.377
Pb	41388.691	+/-	662.606
Hg	1.000	+/-	16.180
Zn	96.837	+/-	12.325
Cu	763.606	+/-	39.259
Ni	1.000	+/-	47.563
Co	1.000	+/-	28.656
Fe	329.673	+/-	63.294
Mn	98.670	+/-	79.405
Cr	1.000	+/-	25.825
V	1.000	+/-	42.379
Ti	279.201	+/-	157.653
Ca	30171.184	+/-	550.040
K	21998.607	+/-	514.539
Al	39356.555	+/-	1880.373
P	2514.825	+/-	163.832
Si	108439.758	+/-	1928.451
Cl	3803.905	+/-	82.801
S	24908.092	+/-	437.873
Mg	8740.790	+/-	7840.703

mRFA -Ergebnisse

XL3t-69288

Reading No 11
Mode Mining
Time 2019-12-07 12:22
Duration 120.63
Units ppm
Sigma Value 2
Sequence Final
Flags
INV NR Gm1198
OBJEKT TAFELGEMAELEN
MATERIAL HOLZ METALL FASSUNG
ANALYSESTELLE P11 MANTEL ENGEL
MESSAUFBAU STATIV
FILTER m30lo30hi30li30
User Login Raquet



Ele	ppm	+/-	$\pm 2\sigma$
Ce	-339.000	+/-	137.648
La	1.000	+/-	63.168
Ba	1.000	+/-	66.923
Sb	1.000	+/-	22.033
Sn	1.000	+/-	10.794
Cd	1.000	+/-	7.630
Ag	1.000	+/-	4.729
Bal	749489.000	+/-	1847.068
Nb	49.685	+/-	21.946
Zr	1.000	+/-	73.033
Y	1.000	+/-	18.561
Sr	390.176	+/-	11.719
Rb	1.000	+/-	38.648
Th	1.000	+/-	1033.825
Bi	1.000	+/-	971.786
Au	1.000	+/-	24.786
As	8004.518	+/-	209.752
Se	18.593	+/-	13.600
Pb	33828.066	+/-	534.139
Hg	1.000	+/-	14.488
Zn	79.373	+/-	10.830
Cu	491.677	+/-	31.579
Ni	1.000	+/-	35.819
Co	1.000	+/-	47.174
Fe	244.470	+/-	57.916
Mn	1.000	+/-	111.696
Cr	42.094	+/-	22.314
V	1.000	+/-	32.874
Ti	186.795	+/-	135.087
Ca	46168.309	+/-	755.448
K	15848.574	+/-	394.201
Al	27934.082	+/-	1629.316
P	2052.231	+/-	160.720
Si	85318.938	+/-	1585.129
Cl	2627.059	+/-	62.343
S	27226.348	+/-	456.188
Mg	1.000	+/-	9963.441

mRFA -Ergebnisse

XL3t-69288

Reading No 12
Mode Mining
Time 2019-12-07 12:27
Duration 120.82
Units ppm
Sigma Value 2
Sequence Final
Flags 3mm
INV NR Gm1198
OBJEKT TAFELGEMAELEN
MATERIAL HOLZ METALL FASSUNG
ANALYSESTELLE P12 ALBE
MESSAUFBAU STATIV
FILTER m30lo30hi30li30
User Login Raquet

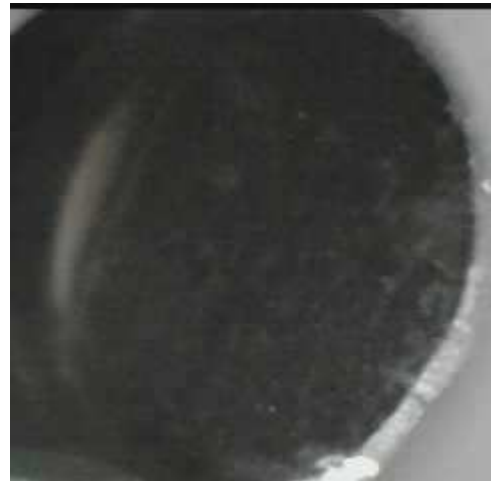


Ele	ppm	+/-	$\pm 2\sigma$
Ce	1.000	+/-	151.327
La	1.000	+/-	122.829
Ba	1.000	+/-	133.514
Sb	1.000	+/-	62.893
Sn	34.003	+/-	29.990
Cd	1.000	+/-	19.839
Ag	1.000	+/-	9.585
Bal	811753.750	+/-	2051.512
Nb	30.733	+/-	24.933
Zr	1.000	+/-	85.510
Y	1.000	+/-	21.764
Sr	382.430	+/-	16.239
Rb	1.000	+/-	41.879
Th	1.000	+/-	1186.424
Bi	1.000	+/-	1119.706
Au	1.000	+/-	33.041
As	6493.268	+/-	239.517
Se	22.542	+/-	17.984
Pb	24811.334	+/-	546.916
Hg	1.000	+/-	19.846
Zn	102.309	+/-	16.314
Cu	64.098	+/-	25.542
Ni	1.000	+/-	46.200
Co	1.000	+/-	57.703
Fe	1864.812	+/-	154.664
Mn	1.000	+/-	159.207
Cr	1.000	+/-	45.067
V	1.000	+/-	36.101
Ti	1.000	+/-	113.750
Ca	83101.180	+/-	1654.936
K	950.600	+/-	193.526
Al	3738.944	+/-	1029.237
P	3931.508	+/-	249.745
Si	14964.438	+/-	762.167
Cl	5993.805	+/-	161.338
S	41760.246	+/-	851.221
Mg	1.000	+/-	10323.837

mRFA -Ergebnisse

XL3t-69288

Reading No 13
Mode Mining
Time 2019-12-07 12:31
Duration 121.82
Units ppm
Sigma Value 2
Sequence Final
Flags
INV NR Gm1198
OBJEKT TAFELGEMAELEN
MATERIAL HOLZ METALL FASSUNG
ANALYSESTELLE P13 KUTTE
MESSAUFBAU STATIV
FILTER m30lo30hi30li30
User Login Raquet



Ele	ppm	+/-	$\pm 2\sigma$
Ce	-339.000	+/-	97.308
La	1.000	+/-	44.616
Ba	1.000	+/-	47.691
Sb	1.000	+/-	18.344
Sn	10.478	+/-	8.842
Cd	9.027	+/-	6.467
Ag	4.938	+/-	4.265
Bal	822325.000	+/-	1026.352
Nb	15.739	+/-	9.622
Zr	1.000	+/-	34.341
Y	1.000	+/-	8.141
Sr	403.342	+/-	8.481
Rb	1.000	+/-	19.136
Th	1.000	+/-	503.414
Bi	1.000	+/-	504.300
Au	1.000	+/-	16.617
As	3939.180	+/-	99.167
Se	1.000	+/-	14.193
Pb	12774.443	+/-	162.033
Hg	1.000	+/-	7.665
Zn	54.812	+/-	9.174
Cu	1278.962	+/-	39.812
Ni	1.000	+/-	27.035
Co	1.000	+/-	23.430
Fe	679.648	+/-	56.968
Mn	64.123	+/-	62.057
Cr	1.000	+/-	32.640
V	1.000	+/-	17.134
Ti	1.000	+/-	88.856
Ca	86636.313	+/-	953.492
K	2017.028	+/-	143.374
Al	3681.849	+/-	917.813
P	4687.681	+/-	214.260
Si	19576.803	+/-	678.810
Cl	4575.954	+/-	80.816
S	37264.672	+/-	443.795
Mg	1.000	+/-	11714.218

mRFA -Ergebnisse

XL3t-69288

Reading No 14
Mode Mining
Time 2019-12-07 12:35
Duration 120.92
Units ppm
Sigma Value 2
Sequence Final
Flags
INV NR Gm1198
OBJEKT TAFELGEMAELEN
MATERIAL HOLZ METALL FASSUNG
ANALYSESTELLE P14 MANTELFUTTER PAULUS
MESSAUFBAU STATIV
FILTER m30lo30hi30li30
User Login Raquet



Ele	ppm	+/-	$\pm 2\sigma$
Ce	-339.000	+/-	117.367
La	1.000	+/-	54.039
Ba	1.000	+/-	57.596
Sb	1.000	+/-	27.702
Sn	1.000	+/-	12.584
Cd	1.000	+/-	11.550
Ag	1.000	+/-	5.524
Bal	827347.188	+/-	1094.818
Nb	26.232	+/-	12.670
Zr	1.000	+/-	44.664
Y	1.000	+/-	10.760
Sr	337.026	+/-	8.566
Rb	1.000	+/-	20.738
Th	1.000	+/-	651.169
Bi	1.000	+/-	688.762
Au	1.000	+/-	17.821
As	4923.566	+/-	128.799
Se	12.109	+/-	10.866
Pb	17740.348	+/-	245.051
Hg	1.000	+/-	9.120
Zn	33.109	+/-	12.608
Cu	6843.825	+/-	128.088
Ni	1.000	+/-	29.637
Co	1.000	+/-	21.927
Fe	154.193	+/-	45.639
Mn	1.000	+/-	95.479
Cr	28.392	+/-	20.750
V	1.000	+/-	16.453
Ti	1.000	+/-	77.926
Ca	109582.078	+/-	1254.210
K	573.399	+/-	127.583
Al	1.000	+/-	922.831
P	1914.976	+/-	157.798
Si	6676.269	+/-	430.374
Cl	1613.988	+/-	46.456
S	22193.258	+/-	302.967
Mg	1.000	+/-	13410.344