

mRFA -Ergebnisse

XL3t-69288

Reading No 1  
Mode Mining  
Time 2020-04-09 10:20  
Duration 121.71  
Units ppm  
Sigma Value 2  
Sequence Final  
Flags  
INV NR Gm1057  
OBJEKT TAFELGEMAELEN  
MATERIAL HOLZ METALL FASSUNG  
ANALYSESTELLE P1 ARCHITEKTUR AS  
MESSAUFBAU STATIV  
FILTER m30lo30hi30li30  
User Login Raquet



Ele	ppm	+/-	$\pm 2\sigma$
Ce	-339.000	+/-	116.616
La	1.000	+/-	53.311
Ba	1.000	+/-	56.769
Sb	1.000	+/-	19.064
Sn	13.176	+/-	10.363
Cd	1.000	+/-	10.938
Ag	1.000	+/-	6.854
Bal	874948.813	+/-	980.934
Nb	51.309	+/-	20.653
Zr	1.000	+/-	69.052
Y	1.000	+/-	17.404
Sr	173.875	+/-	7.462
Rb	1.000	+/-	33.792
Th	1.000	+/-	962.805
Bi	1.000	+/-	985.974
Au	1.000	+/-	22.463
As	8354.028	+/-	203.694
Se	29.853	+/-	21.324
Pb	32291.662	+/-	499.864
Hg	1.000	+/-	12.991
Zn	169.338	+/-	13.376
Cu	38.007	+/-	16.688
Ni	1.000	+/-	32.732
Co	1.000	+/-	51.553
Fe	6320.936	+/-	184.132
Mn	98.225	+/-	69.390
Cr	31.975	+/-	22.360
V	1.000	+/-	20.203
Ti	1.000	+/-	83.905
Ca	12753.174	+/-	267.820
K	468.271	+/-	116.617
Al	2299.814	+/-	618.928
P	2075.074	+/-	146.303
Si	10235.362	+/-	434.688
Cl	2124.673	+/-	52.814
S	34425.063	+/-	589.064
Mg	13097.329	+/-	7036.835

mRFA -Ergebnisse

XL3t-69288

Reading No 2  
Mode Mining  
Time 2020-04-09 10:25  
Duration 120.09  
Units ppm  
Sigma Value 2  
Sequence Final  
Flags  
INV NR Gm1057  
OBJEKT TAFELGEMAELEN  
MATERIAL HOLZ METALL FASSUNG  
ANALYSESTELLE P2 STERN AS  
MESSAUFBAU STATIV  
FILTER m30lo30hi30li30  
User Login Raquet



Ele	ppm	+/-	$\pm 2\sigma$
Ce	-339.000	+/-	156.826
La	1.000	+/-	71.941
Ba	370.522	+/-	81.748
Sb	1.000	+/-	30.734
Sn	120.848	+/-	16.479
Cd	1.000	+/-	8.780
Ag	1.000	+/-	8.790
Bal	843410.500	+/-	1543.601
Nb	85.700	+/-	32.476
Zr	1.000	+/-	106.662
Y	1.000	+/-	27.628
Sr	101.739	+/-	8.654
Rb	1.000	+/-	53.121
Th	1.000	+/-	1464.202
Bi	1.000	+/-	1568.929
Au	1022.843	+/-	65.595
As	8218.315	+/-	276.679
Se	1.000	+/-	30.055
Pb	47478.484	+/-	875.311
Hg	1.000	+/-	20.645
Zn	1.000	+/-	44.819
Cu	42667.809	+/-	733.365
Ni	1.000	+/-	39.312
Co	1.000	+/-	50.300
Fe	2053.245	+/-	109.556
Mn	253.982	+/-	92.494
Cr	1.000	+/-	31.617
V	1.000	+/-	64.880
Ti	1.000	+/-	270.388
Ca	7205.672	+/-	199.760
K	1371.017	+/-	154.116
Al	1372.513	+/-	599.484
P	10575.450	+/-	259.392
Si	9375.675	+/-	426.324
Cl	1821.342	+/-	48.625
S	22494.359	+/-	420.546
Mg	1.000	+/-	6549.491

mRFA -Ergebnisse

XL3t-69288

Reading No 3  
Mode Mining  
Time 2020-04-09 10:29  
Duration 121.74  
Units ppm  
Sigma Value 2  
Sequence Final  
Flags  
INV NR Gm1057  
OBJEKT TAFELGEMAELEN  
MATERIAL HOLZ METALL FASSUNG  
ANALYSESTELLE P3 ALTARDECKE AS  
MESSAUFBAU STATIV  
FILTER m30lo30hi30li30  
User Login Raquet



Ele	ppm	+/-	$\pm 2\sigma$
Ce	-339.000	+/-	147.871
La	1.000	+/-	67.507
Ba	1.000	+/-	72.406
Sb	1.000	+/-	28.747
Sn	123.912	+/-	15.409
Cd	16.806	+/-	9.272
Ag	7.047	+/-	5.991
Bal	854949.313	+/-	1352.946
Nb	89.967	+/-	34.140
Zr	1.000	+/-	107.227
Y	1.000	+/-	28.002
Sr	50.383	+/-	7.112
Rb	1.000	+/-	56.025
Th	1.000	+/-	1447.410
Bi	1.000	+/-	1163.644
Au	152.829	+/-	47.425
As	11581.460	+/-	287.504
Se	29.912	+/-	21.366
Pb	56031.504	+/-	909.030
Hg	1.000	+/-	19.676
Zn	123.622	+/-	13.762
Cu	61.353	+/-	19.901
Ni	1.000	+/-	52.680
Co	63.767	+/-	32.298
Fe	281.826	+/-	64.129
Mn	202.220	+/-	82.041
Cr	1.000	+/-	35.735
V	1.000	+/-	18.563
Ti	1.000	+/-	85.084
Ca	10618.917	+/-	251.885
K	1486.594	+/-	147.813
Al	2700.367	+/-	632.987
P	10129.412	+/-	259.187
Si	13419.890	+/-	506.563
Cl	2238.859	+/-	56.238
S	35639.930	+/-	640.853
Mg	1.000	+/-	8429.600

mRFA -Ergebnisse

XL3t-69288

Reading No 4  
Mode Mining  
Time 2020-04-09 10:34  
Duration 121.23  
Units ppm  
Sigma Value 2  
Sequence Final  
Flags  
INV NR Gm1057  
OBJEKT TAFELGEMAELEN  
MATERIAL HOLZ METALL FASSUNG  
ANALYSESTELLE P4 SCHRIFT ALTARDECKE AS  
MESSAUFBAU STATIV  
FILTER m30lo30hi30li30  
User Login Raquet



Ele	ppm	+/-	$\pm 2\sigma$
Ce	-339.000	+/-	158.347
La	1.000	+/-	72.568
Ba	1.000	+/-	77.029
Sb	1.000	+/-	25.739
Sn	464.561	+/-	24.337
Cd	1.000	+/-	9.098
Ag	7.798	+/-	6.607
Bal	836570.063	+/-	1574.437
Nb	1.000	+/-	27.527
Zr	1.000	+/-	78.933
Y	1.000	+/-	21.370
Sr	1.000	+/-	15.796
Rb	1.000	+/-	43.385
Th	1.000	+/-	1088.671
Bi	1.000	+/-	1019.676
Au	4263.278	+/-	153.375
As	8759.217	+/-	224.050
Se	25.559	+/-	19.844
Pb	24458.854	+/-	448.879
Hg	16481.416	+/-	275.570
Zn	691.547	+/-	56.770
Cu	164.662	+/-	27.895
Ni	69.779	+/-	47.524
Co	50.374	+/-	43.988
Fe	1188.922	+/-	103.657
Mn	100.324	+/-	93.860
Cr	95.798	+/-	28.575
V	1.000	+/-	26.153
Ti	1.000	+/-	107.026
Ca	10098.325	+/-	265.097
K	2438.139	+/-	198.934
Al	3141.235	+/-	728.569
P	43304.867	+/-	769.997
Si	12167.275	+/-	579.424
Cl	2592.966	+/-	63.143
S	32865.004	+/-	577.105
Mg	1.000	+/-	7656.561

mRFA -Ergebnisse

XL3t-69288

Reading No 5  
Mode Mining  
Time 2020-04-09 10:39  
Duration 121.26  
Units ppm  
Sigma Value 2  
Sequence Final  
Flags  
INV NR Gm1057  
OBJEKT TAFELGEMAELEN  
MATERIAL HOLZ METALL FASSUNG  
ANALYSESTELLE P5 KLEID AS  
MESSAUFBAU STATIV  
FILTER m30lo30hi30li30  
User Login Raquet

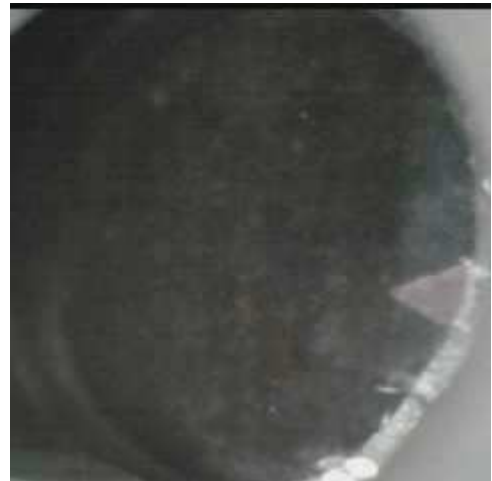


Ele	ppm	+/-	$\pm 2\sigma$
Ce	-339.000	+/-	99.265
La	1.000	+/-	45.117
Ba	1.000	+/-	49.136
Sb	1.000	+/-	16.261
Sn	1.000	+/-	10.412
Cd	8.592	+/-	6.526
Ag	559.153	+/-	16.287
Bal	847397.438	+/-	1046.220
Nb	39.687	+/-	14.490
Zr	1.000	+/-	53.295
Y	1.000	+/-	12.247
Sr	162.146	+/-	6.397
Rb	1.000	+/-	23.378
Th	1.000	+/-	732.168
Bi	1.000	+/-	757.384
Au	1.000	+/-	17.737
As	2828.789	+/-	127.238
Se	1.000	+/-	14.717
Pb	20737.082	+/-	296.512
Hg	1.000	+/-	9.807
Zn	1.000	+/-	25.256
Cu	26067.484	+/-	389.789
Ni	1.000	+/-	28.200
Co	1.000	+/-	26.444
Fe	1137.343	+/-	70.837
Mn	1.000	+/-	80.992
Cr	1.000	+/-	22.127
V	1.000	+/-	24.392
Ti	1.000	+/-	117.661
Ca	75573.555	+/-	906.562
K	1452.034	+/-	152.478
Al	1992.857	+/-	588.077
P	566.212	+/-	95.299
Si	6538.632	+/-	333.414
Cl	1841.529	+/-	41.284
S	13097.438	+/-	188.350
Mg	1.000	+/-	5391.825

mRFA -Ergebnisse

XL3t-69288

Reading No 6  
Mode Mining  
Time 2020-04-09 10:43  
Duration 121.28  
Units ppm  
Sigma Value 2  
Sequence Final  
Flags  
INV NR Gm1057  
OBJEKT TAFELGEMAELEN  
MATERIAL HOLZ METALL FASSUNG  
ANALYSESTELLE P6 KLEID 2 AS  
MESSAUFBAU STATIV  
FILTER m30lo30hi30li30  
User Login Raquet

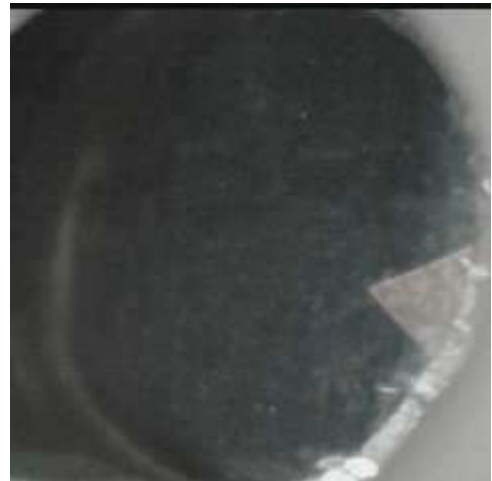


Ele	ppm	+/-	$\pm 2\sigma$
Ce	-339.000	+/-	63.837
La	1.000	+/-	29.236
Ba	1.000	+/-	31.629
Sb	1.000	+/-	13.258
Sn	1.000	+/-	6.851
Cd	14.547	+/-	4.687
Ag	449.878	+/-	10.975
Bal	878520.375	+/-	622.710
Nb	9.009	+/-	4.270
Zr	1.000	+/-	17.891
Y	1.000	+/-	3.238
Sr	162.840	+/-	4.007
Rb	1.000	+/-	6.131
Th	1.000	+/-	222.580
Bi	1.000	+/-	241.106
Au	1.000	+/-	6.385
As	785.781	+/-	39.365
Se	1.000	+/-	6.035
Pb	3481.364	+/-	42.746
Hg	1.000	+/-	3.322
Zn	306.343	+/-	15.318
Cu	5569.306	+/-	76.787
Ni	1.000	+/-	19.591
Co	1.000	+/-	26.285
Fe	3173.752	+/-	85.832
Mn	1.000	+/-	46.771
Cr	1.000	+/-	17.316
V	1.000	+/-	21.167
Ti	1.000	+/-	117.974
Ca	67146.422	+/-	551.244
K	5902.386	+/-	173.996
Al	3382.677	+/-	571.377
P	514.774	+/-	90.398
Si	9057.936	+/-	363.887
Cl	2003.812	+/-	37.205
S	11659.180	+/-	126.519
Mg	7859.632	+/-	5648.981

mRFA -Ergebnisse

XL3t-69288

Reading No 7  
Mode Mining  
Time 2020-04-09 10:47  
Duration 121.95  
Units ppm  
Sigma Value 2  
Sequence Final  
Flags  
INV NR Gm1057  
OBJEKT TAFELGEMAELEN  
MATERIAL HOLZ METALL FASSUNG  
ANALYSESTELLE P7 MANTEL AS  
MESSAUFBAU STATIV  
FILTER m30lo30hi30li30  
User Login Raquet



Ele	ppm	+/-	$\pm 2\sigma$
Ce	-339.000	+/-	143.852
La	1.000	+/-	65.547
Ba	413.405	+/-	74.561
Sb	1.000	+/-	22.872
Sn	1.000	+/-	19.047
Cd	1.000	+/-	7.973
Ag	1.000	+/-	4.850
Bal	837808.813	+/-	1468.261
Nb	32.098	+/-	23.310
Zr	1.000	+/-	93.219
Y	1.000	+/-	20.695
Sr	97.394	+/-	7.465
Rb	1.000	+/-	37.761
Th	1.000	+/-	1156.422
Bi	1.000	+/-	1259.393
Au	1.000	+/-	27.460
As	2134.454	+/-	187.095
Se	1.000	+/-	20.632
Pb	29248.666	+/-	528.211
Hg	1.000	+/-	15.171
Zn	1.000	+/-	41.313
Cu	104086.867	+/-	1414.496
Ni	1.000	+/-	34.934
Co	1.000	+/-	45.681
Fe	1512.266	+/-	79.785
Mn	187.568	+/-	73.018
Cr	1.000	+/-	22.695
V	1.000	+/-	43.379
Ti	1.000	+/-	219.336
Ca	4118.242	+/-	126.194
K	264.743	+/-	102.223
Al	1334.674	+/-	454.381
P	939.164	+/-	73.628
Si	5523.901	+/-	253.644
Cl	1387.767	+/-	32.632
S	10909.905	+/-	176.531
Mg	1.000	+/-	5194.733

mRFA -Ergebnisse

XL3t-69288

Reading No 8  
Mode Mining  
Time 2020-04-09 10:51  
Duration 121.34  
Units ppm  
Sigma Value 2  
Sequence Final  
Flags  
INV NR Gm1057  
OBJEKT TAFELGEMAELEN  
MATERIAL HOLZ METALL FASSUNG  
ANALYSESTELLE P8 KOPFTUCH AS  
MESSAUFBAU STATIV  
FILTER m30lo30hi30li30  
User Login Raquet



Ele	ppm	+/-	$\pm 2\sigma$
Ce	-339.000	+/-	270.620
La	1.000	+/-	113.774
Ba	1.000	+/-	171.338
Sb	1.000	+/-	38.884
Sn	10581.186	+/-	229.044
Cd	64.465	+/-	16.754
Ag	15.189	+/-	9.237
Bal	841490.125	+/-	1977.960
Nb	139.197	+/-	49.934
Zr	1.000	+/-	150.957
Y	1.000	+/-	40.523
Sr	69.318	+/-	10.317
Rb	1.000	+/-	80.999
Th	1.000	+/-	1987.057
Bi	1.000	+/-	1568.756
Au	1.000	+/-	44.246
As	11738.861	+/-	356.715
Se	1.000	+/-	29.938
Pb	77838.172	+/-	1432.560
Hg	1.000	+/-	25.496
Zn	119.216	+/-	15.420
Cu	65.435	+/-	24.675
Ni	1.000	+/-	56.389
Co	74.560	+/-	42.933
Fe	771.075	+/-	93.509
Mn	156.201	+/-	97.586
Cr	1.000	+/-	29.195
V	1.000	+/-	20.770
Ti	1.000	+/-	107.090
Ca	11605.905	+/-	333.487
K	1142.569	+/-	201.586
Al	1800.593	+/-	676.027
P	1640.071	+/-	139.842
Si	10191.711	+/-	458.378
Cl	2354.428	+/-	65.247
S	28141.682	+/-	574.427
Mg	1.000	+/-	7332.357



mRFA -Ergebnisse

XL3t-69288

Reading No 9  
Mode Mining  
Time 2020-04-09 10:55  
Duration 121.21  
Units ppm  
Sigma Value 2  
Sequence Final  
Flags  
INV NR Gm1057  
OBJEKT TAFELGEMAELEN  
MATERIAL HOLZ METALL FASSUNG  
ANALYSESTELLE P9 ROTLACK AS  
MESSAUFBAU STATIV  
FILTER m30lo30hi30li30  
User Login Raquet

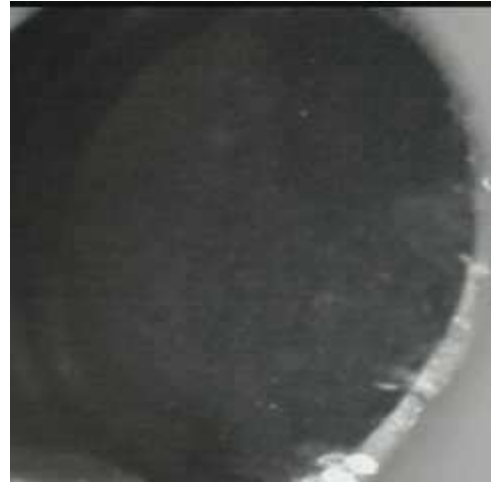


Ele	ppm	+/-	$\pm 2\sigma$
Ce	-339.000	+/-	144.485
La	1.000	+/-	66.047
Ba	1.000	+/-	70.759
Sb	1.000	+/-	28.091
Sn	34.172	+/-	12.978
Cd	1.000	+/-	10.506
Ag	1.000	+/-	7.406
Bal	854198.688	+/-	1406.511
Nb	95.823	+/-	33.724
Zr	1.000	+/-	106.687
Y	1.000	+/-	27.699
Sr	124.569	+/-	8.951
Rb	1.000	+/-	55.165
Th	1.000	+/-	1452.985
Bi	1.000	+/-	1376.667
Au	1.000	+/-	34.794
As	10345.369	+/-	284.948
Se	24.539	+/-	17.528
Pb	52761.547	+/-	905.491
Hg	1.000	+/-	21.455
Zn	365.540	+/-	22.944
Cu	268.348	+/-	27.962
Ni	1.000	+/-	40.425
Co	1.000	+/-	37.952
Fe	1539.054	+/-	103.476
Mn	89.468	+/-	78.682
Cr	1.000	+/-	29.482
V	1.000	+/-	25.755
Ti	1.000	+/-	123.856
Ca	25219.572	+/-	493.959
K	4243.563	+/-	208.594
Al	6625.874	+/-	777.175
P	2383.819	+/-	142.474
Si	11679.888	+/-	468.679
Cl	2487.083	+/-	62.471
S	27513.176	+/-	527.636
Mg	1.000	+/-	11021.344

mRFA -Ergebnisse

XL3t-69288

Reading No 10  
Mode Mining  
Time 2020-04-09 10:59  
Duration 121.35  
Units ppm  
Sigma Value 2  
Sequence Final  
Flags  
INV NR Gm1057  
OBJEKT TAFELGEMAELEN  
MATERIAL HOLZ METALL FASSUNG  
ANALYSESTELLE P10 BLAUE RUECKLAGE IS  
MESSAUFBAU STATIV  
FILTER m30lo30hi30li30  
User Login Raquet

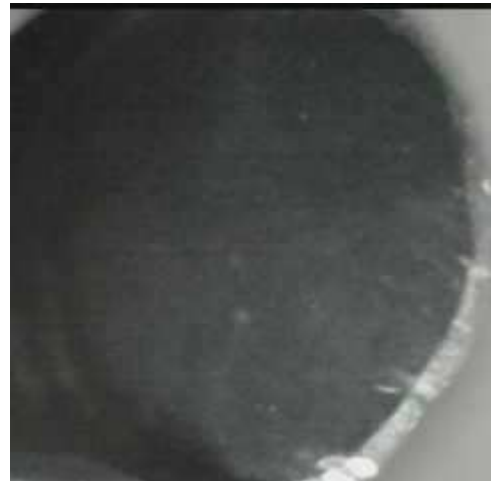


Ele	ppm	+/-	$\pm 2\sigma$
Ce	-339.000	+/-	81.125
La	1.000	+/-	37.211
Ba	80.077	+/-	42.572
Sb	1.000	+/-	16.849
Sn	8.583	+/-	7.597
Cd	11.974	+/-	5.713
Ag	4.515	+/-	3.693
Bal	871305.375	+/-	813.762
Nb	1.000	+/-	2.634
Zr	1.000	+/-	10.953
Y	7.177	+/-	2.856
Sr	70.408	+/-	3.607
Rb	1.000	+/-	3.605
Th	1.000	+/-	132.967
Bi	1.000	+/-	119.844
Au	1.000	+/-	6.189
As	1.000	+/-	16.911
Se	1.000	+/-	2.862
Pb	499.650	+/-	18.062
Hg	17.273	+/-	3.016
Zn	1.000	+/-	27.821
Cu	72848.852	+/-	546.531
Ni	1.000	+/-	24.829
Co	1.000	+/-	46.911
Fe	9872.656	+/-	153.025
Mn	383.727	+/-	69.456
Cr	1.000	+/-	19.162
V	1.000	+/-	61.636
Ti	1.000	+/-	367.434
Ca	27586.541	+/-	285.785
K	530.048	+/-	100.646
Al	1670.448	+/-	377.256
P	344.975	+/-	46.670
Si	12667.873	+/-	321.118
Cl	398.774	+/-	16.278
S	1691.052	+/-	32.030
Mg	1.000	+/-	3652.377

mRFA -Ergebnisse

XL3t-69288

Reading No 11  
Mode Mining  
Time 2020-04-09 11:03  
Duration 121.35  
Units ppm  
Sigma Value 2  
Sequence Final  
Flags  
INV NR Gm1057  
OBJEKT TAFELGEMAELEN  
MATERIAL HOLZ METALL FASSUNG  
ANALYSESTELLE P11 BLAUE RUECKLAGE 2 IS  
MESSAUFBAU STATIV  
FILTER m30lo30hi30li30  
User Login Raquet



Ele	ppm	+/-	$\pm 2\sigma$
Ce	-339.000	+/-	84.820
La	1.000	+/-	39.046
Ba	251.057	+/-	45.707
Sb	1.000	+/-	23.406
Sn	1.000	+/-	12.060
Cd	17.803	+/-	6.039
Ag	4.454	+/-	3.789
Bal	839805.063	+/-	1083.612
Nb	1.000	+/-	3.074
Zr	1.000	+/-	10.787
Y	8.197	+/-	3.332
Sr	91.156	+/-	4.501
Rb	1.000	+/-	4.394
Th	1.000	+/-	159.896
Bi	1.000	+/-	126.328
Au	13.712	+/-	8.246
As	1.000	+/-	19.933
Se	1.000	+/-	3.413
Pb	564.472	+/-	21.331
Hg	17.843	+/-	3.434
Zn	1.000	+/-	34.641
Cu	100306.500	+/-	774.961
Ni	1.000	+/-	27.220
Co	1.000	+/-	51.976
Fe	11206.848	+/-	165.620
Mn	467.327	+/-	73.836
Cr	1.000	+/-	22.078
V	1.000	+/-	82.915
Ti	1.000	+/-	374.833
Ca	24814.313	+/-	286.702
K	524.167	+/-	106.776
Al	3392.815	+/-	450.358
P	366.502	+/-	47.714
Si	15007.368	+/-	343.147
Cl	543.141	+/-	17.099
S	2597.208	+/-	39.465
Mg	1.000	+/-	5974.006

mRFA -Ergebnisse

XL3t-69288

Reading No 12  
Mode Mining  
Time 2020-04-09 11:06  
Duration 120.03  
Units ppm  
Sigma Value 2  
Sequence Final  
Flags  
INV NR Gm1057  
OBJEKT TAFELGEMAELEN  
MATERIAL HOLZ METALL FASSUNG  
ANALYSESTELLE P12 HELLE RUECKKLAGE IS  
MESSAUFBAU STATIV  
FILTER m30lo30hi30li30  
User Login Raquet



Ele	ppm	+/-	$\pm 2\sigma$
Ce	-339.000	+/-	52.649
La	1.000	+/-	24.097
Ba	1.000	+/-	25.995
Sb	10.181	+/-	9.771
Sn	12.161	+/-	5.180
Cd	18.564	+/-	4.026
Ag	7.823	+/-	2.620
Bal	829405.000	+/-	729.362
Nb	3.547	+/-	2.119
Zr	1.000	+/-	7.159
Y	10.696	+/-	1.845
Sr	106.697	+/-	2.894
Rb	1.000	+/-	2.797
Th	1.000	+/-	83.136
Bi	1.000	+/-	68.084
Au	1.000	+/-	2.884
As	1.000	+/-	8.504
Se	1.000	+/-	1.524
Pb	356.190	+/-	10.268
Hg	13.974	+/-	1.504
Zn	1.000	+/-	3.433
Cu	45.060	+/-	10.257
Ni	1.000	+/-	17.109
Co	1.000	+/-	50.938
Fe	19234.418	+/-	195.062
Mn	671.314	+/-	59.245
Cr	40.449	+/-	16.994
V	1.000	+/-	22.076
Ti	1.000	+/-	73.408
Ca	125662.648	+/-	685.568
K	1580.047	+/-	135.239
Al	894.662	+/-	591.403
P	14879.791	+/-	223.052
Si	5696.764	+/-	398.601
Cl	177.982	+/-	19.300
S	1172.064	+/-	39.121
Mg	1.000	+/-	9413.125

mRFA -Ergebnisse

XL3t-69288

Reading No 13  
Mode Mining  
Time 2020-04-09 11:11  
Duration 120.08  
Units ppm  
Sigma Value 2  
Sequence Final  
Flags  
INV NR Gm1057  
OBJEKT TAFELGEMAELEN  
MATERIAL HOLZ METALL FASSUNG  
ANALYSESTELLE P13 RUECKLAGE SCHLEIERWERK IS  
MESSAUFBAU STATIV  
FILTER m30lo30hi30li30  
User Login Raquet



Ele	ppm	+/-	$\pm 2\sigma$
Ce	-339.000	+/-	121.137
La	1.000	+/-	54.993
Ba	1.000	+/-	58.860
Sb	1.000	+/-	24.731
Sn	133.445	+/-	13.683
Cd	1.000	+/-	9.417
Ag	9.479	+/-	5.271
Bal	838215.563	+/-	1335.144
Nb	29.897	+/-	20.843
Zr	1.000	+/-	70.866
Y	1.000	+/-	18.053
Sr	1.000	+/-	10.366
Rb	1.000	+/-	34.544
Th	1.000	+/-	992.584
Bi	1.000	+/-	902.819
Au	1.000	+/-	70.877
As	7713.477	+/-	199.280
Se	28.637	+/-	20.455
Pb	26196.281	+/-	434.786
Hg	8749.750	+/-	146.713
Zn	512.645	+/-	39.068
Cu	62.960	+/-	20.350
Ni	1.000	+/-	37.876
Co	51.619	+/-	31.448
Fe	89.817	+/-	57.983
Mn	116.250	+/-	80.415
Cr	1.000	+/-	21.726
V	1.000	+/-	26.398
Ti	1.000	+/-	91.185
Ca	26031.836	+/-	475.272
K	421.302	+/-	119.004
Al	3478.143	+/-	807.229
P	16609.555	+/-	372.041
Si	17904.865	+/-	654.195
Cl	2603.759	+/-	63.932
S	51040.758	+/-	837.805
Mg	1.000	+/-	10710.821

mRFA -Ergebnisse

XL3t-69288

Reading No 21  
Mode Mining  
Time 2020-04-09 11:52  
Duration 122.22  
Units ppm  
Sigma Value 2  
Sequence Final  
Flags  
INV NR Gm1057  
OBJEKT TAFELGEMAELEN  
MATERIAL HOLZ METALL FASSUNG  
ANALYSESTELLE P14 NIMBUS  
MESSAUFBAU STATIV  
FILTER m30lo30hi30li30  
User Login Raquet



Ele	ppm	+/-	$\pm 2\sigma$
Ce	-38.326	+/-	243.348
La	142.911	+/-	110.873
Ba	207.207	+/-	117.768
Sb	1.000	+/-	36.431
Sn	4490.577	+/-	127.319
Cd	43.691	+/-	16.299
Ag	1.000	+/-	12.541
Bal	817672.563	+/-	2589.623
Nb	155.697	+/-	67.068
Zr	1.000	+/-	197.347
Y	1.000	+/-	53.562
Sr	70.140	+/-	12.923
Rb	1.000	+/-	109.053
Th	1.000	+/-	2543.601
Bi	1.000	+/-	1950.704
Au	1.000	+/-	56.368
As	15349.040	+/-	465.247
Se	1.000	+/-	31.983
Pb	96775.930	+/-	1988.092
Hg	1.000	+/-	31.913
Zn	99.954	+/-	15.605
Cu	127.713	+/-	30.197
Ni	1.000	+/-	76.894
Co	86.871	+/-	41.887
Fe	1.000	+/-	75.746
Mn	165.081	+/-	108.037
Cr	1.000	+/-	29.982
V	1.000	+/-	21.142
Ti	1.000	+/-	107.156
Ca	3079.109	+/-	251.559
K	438.781	+/-	216.455
Al	3032.286	+/-	769.640
P	2827.659	+/-	170.666
Si	11933.151	+/-	508.521
Cl	2535.227	+/-	73.812
S	40464.770	+/-	892.980
Mg	1.000	+/-	13147.070