

mRFA -Ergebnisse

XL3t-69288

Reading No 1  
Mode Mining  
Time 2020-11-30 11:46  
Duration 121.44  
Units ppm  
Sigma Value 2  
Sequence Final  
Flags  
INV NR Gm1055  
OBJEKT TAFELGEMAEDELDE  
MATERIAL HOLZ FASSUNG  
ANALYSESTELLE P28 RS FLAECHE  
MESSAUFBAU FREIHAND  
FILTER m30lo30hi30li30  
User Login Raquet

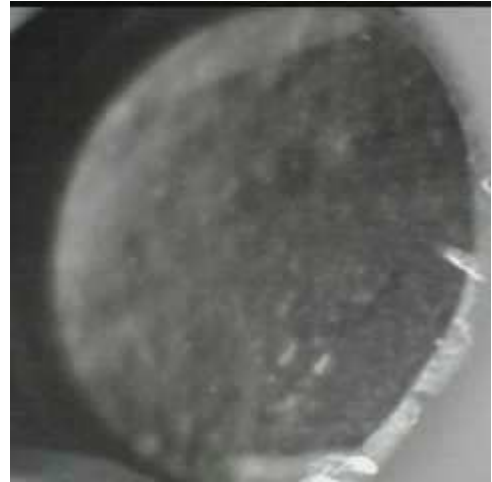


Ele	ppm	+/-	$\pm 2\sigma$
Mg	1.000	+/-	7951.203
Al	1194.098	+/-	722.544
Bal	794678.125	+/-	823.617
Si	5370.945	+/-	358.084
P	1.000	+/-	74.829
S	3171.672	+/-	63.714
Cl	3468.000	+/-	51.742
K	410.909	+/-	116.794
Ca	189469.563	+/-	947.699
Ti	1.000	+/-	84.348
V	1.000	+/-	15.068
Cr	1.000	+/-	17.089
Mn	1.000	+/-	37.542
Fe	545.226	+/-	39.212
Co	1.000	+/-	14.883
Ni	1.000	+/-	15.944
Cu	1.000	+/-	7.434
Zn	9.533	+/-	4.876
As	249.755	+/-	21.463
Se	1.000	+/-	2.537
Rb	1.000	+/-	4.131
Sr	63.299	+/-	2.253
Y	1.000	+/-	1.745
Zr	1.000	+/-	12.268
Nb	9.564	+/-	2.729
Ag	6.042	+/-	2.447
Cd	16.236	+/-	3.804
Sn	25.218	+/-	5.188
Sb	1.000	+/-	12.862
Ba	1.000	+/-	24.744
La	1.000	+/-	22.805
Ce	-339.000	+/-	49.805
Au	1.000	+/-	3.752
Hg	1.000	+/-	1.693
Pb	1311.874	+/-	19.859
Bi	1.000	+/-	114.937
Th	1.000	+/-	128.636

mRFA -Ergebnisse

XL3t-69288

Reading No 2  
Mode Mining  
Time 2020-11-30 11:51  
Duration 121.05  
Units ppm  
Sigma Value 2  
Sequence Final  
Flags  
INV NR Gm1055  
OBJEKT TAFELGEMAELEN  
MATERIAL HOLZ FASSUNG  
ANALYSESTELLE P29 RS SCHRIFT  
MESSAUFBAU FREIHAND  
FILTER m30lo30hi30li30  
User Login Raquet



Ele	ppm	+/-	$\pm 2\sigma$
Mg	1.000	+/-	6961.817
Al	1181.187	+/-	727.277
Bal	790396.375	+/-	835.538
Si	5983.235	+/-	373.289
P	1.000	+/-	77.488
S	2874.592	+/-	60.679
Cl	2070.517	+/-	41.063
K	493.732	+/-	119.409
Ca	195201.703	+/-	952.885
Ti	1.000	+/-	87.364
V	1.000	+/-	16.052
Cr	1.000	+/-	16.205
Mn	1.000	+/-	37.804
Fe	539.363	+/-	39.014
Co	1.000	+/-	14.836
Ni	1.000	+/-	16.160
Cu	1.000	+/-	7.579
Zn	1.000	+/-	5.398
As	137.748	+/-	18.205
Se	1.000	+/-	2.233
Rb	1.000	+/-	3.422
Sr	72.202	+/-	2.367
Y	1.000	+/-	1.511
Zr	1.000	+/-	11.388
Nb	11.168	+/-	2.529
Ag	7.940	+/-	2.588
Cd	20.623	+/-	4.024
Sn	42.458	+/-	5.669
Sb	1.000	+/-	8.892
Ba	1.000	+/-	25.420
La	1.000	+/-	23.521
Ce	-339.000	+/-	51.731
Au	1.000	+/-	3.208
Hg	1.000	+/-	1.374
Pb	967.209	+/-	16.724
Bi	1.000	+/-	110.245
Th	1.000	+/-	113.516