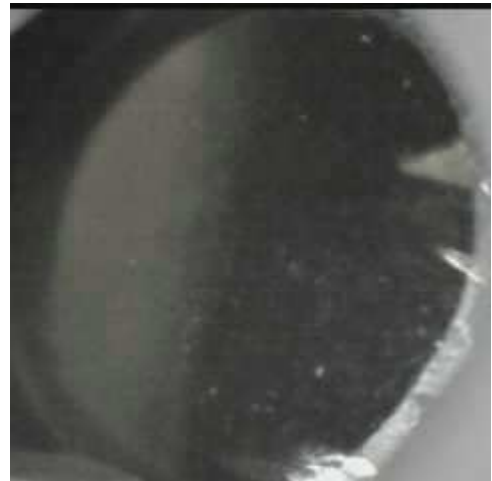


mRFA -Ergebnisse

XL3t-69288

Reading No 1  
Mode Mining  
Time Invalid  
Duration 120.20  
Units ppm  
Sigma Value 2  
Sequence Final  
Flags  
INV NR Gm1055  
OBJEKT TAFELGEMAELENDE  
MATERIAL HOLZ METALL FASSUNG  
ANALYSESTELLE P1 HINTERGRUND UEBERMALUNG  
MESSAUFBAU STATIV  
FILTER m30lo30hi30li30  
User Login Raquet



Ele	ppm	+/-	$\pm 2\sigma$
Mg	1.000	+/-	4730.100
Al	2581.233	+/-	480.525
Bal	918923.313	+/-	483.632
Si	24162.682	+/-	594.119
P	3690.871	+/-	136.373
S	22041.152	+/-	310.082
Cl	1530.981	+/-	36.429
K	1433.262	+/-	121.252
Ca	5080.088	+/-	126.071
Ti	1.000	+/-	113.475
V	1.000	+/-	22.452
Cr	1.000	+/-	18.729
Mn	1.000	+/-	66.675
Fe	4528.989	+/-	121.127
Co	90.442	+/-	39.463
Ni	1.000	+/-	23.235
Cu	65.062	+/-	13.444
Zn	47.230	+/-	7.918
As	3756.843	+/-	91.237
Se	12.650	+/-	8.436
Rb	1.000	+/-	14.974
Sr	11.915	+/-	2.430
Y	1.000	+/-	7.336
Zr	1.000	+/-	37.152
Nb	27.359	+/-	8.900
Ag	6.408	+/-	3.330
Cd	17.815	+/-	5.207
Sn	35.328	+/-	7.312
Sb	1.000	+/-	18.416
Ba	1.000	+/-	34.972
La	1.000	+/-	32.408
Ce	-339.000	+/-	70.888
Au	1.000	+/-	13.904
Hg	1.000	+/-	10.119
Pb	11956.451	+/-	151.127
Bi	1.000	+/-	490.371
Th	1.000	+/-	456.993

mRFA -Ergebnisse

XL3t-69288

Reading No 2  
Mode Mining  
Time Invalid  
Duration 120.46  
Units ppm  
Sigma Value 2  
Sequence Final  
Flags  
INV NR Gm1055  
OBJEKT TAFELGEMAELEN  
MATERIAL HOLZ METALL FASSUNG  
ANALYSESTELLE P2 VORHANGSTANGE  
MESSAUFBAU STATIV  
FILTER m30lo30hi30li30  
User Login Raquet

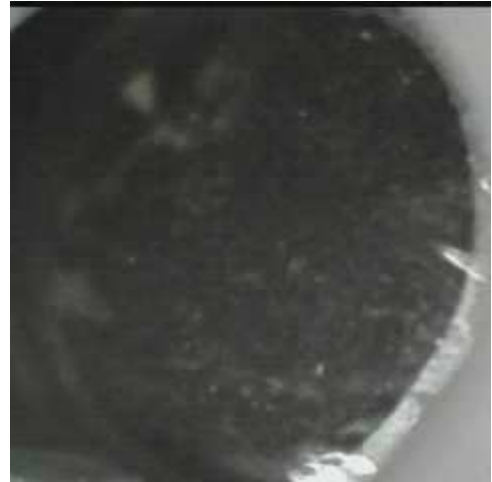


Ele	ppm	+/-	$\pm 2\sigma$
Mg	1.000	+/-	6836.338
Al	2672.758	+/-	697.421
Bal	848831.250	+/-	1269.619
Si	21969.189	+/-	680.433
P	1294.509	+/-	119.541
S	11865.346	+/-	221.408
Cl	1154.520	+/-	40.541
K	2728.632	+/-	261.775
Ca	50801.352	+/-	853.278
Ti	1.000	+/-	183.756
V	58.005	+/-	27.755
Cr	1.000	+/-	44.860
Mn	2221.203	+/-	148.664
Fe	12060.365	+/-	308.707
Co	1.000	+/-	104.695
Ni	1.000	+/-	43.885
Cu	1681.910	+/-	62.083
Zn	30.584	+/-	13.243
As	1093.099	+/-	154.880
Se	1.000	+/-	14.432
Rb	1.000	+/-	32.593
Sr	112.130	+/-	6.900
Y	1.000	+/-	17.138
Zr	1.000	+/-	70.669
Nb	55.582	+/-	20.294
Ag	19.472	+/-	7.113
Cd	64.757	+/-	13.127
Sn	13738.155	+/-	205.932
Sb	1.000	+/-	24.086
Ba	1.000	+/-	77.784
La	1.000	+/-	73.237
Ce	-339.000	+/-	161.198
Au	1.000	+/-	24.081
Hg	1.000	+/-	13.576
Pb	27547.100	+/-	451.728
Bi	1.000	+/-	954.861
Th	1.000	+/-	979.604

mRFA -Ergebnisse

XL3t-69288

Reading No 3  
Mode Mining  
Time Invalid  
Duration 122.25  
Units ppm  
Sigma Value 2  
Sequence Final  
Flags  
INV NR Gm1055  
OBJEKT TAFELGEMAELEN  
MATERIAL HOLZ METALL FASSUNG  
ANALYSESTELLE P3 VORHANGSTANGE 2  
MESSAUFBAU STATIV  
FILTER m30lo30hi30li30  
User Login Raquet



Ele	ppm	+/-	$\pm 2\sigma$
Mg	1.000	+/-	5191.434
Al	2168.098	+/-	464.914
Bal	909642.500	+/-	586.708
Si	23741.338	+/-	594.181
P	3302.088	+/-	131.306
S	22938.600	+/-	350.218
Cl	1510.500	+/-	36.789
K	1986.571	+/-	136.199
Ca	6310.496	+/-	152.423
Ti	1.000	+/-	79.750
V	1.000	+/-	17.874
Cr	1.000	+/-	20.085
Mn	113.821	+/-	58.430
Fe	3953.824	+/-	121.995
Co	205.357	+/-	43.513
Ni	1.000	+/-	28.006
Cu	227.440	+/-	19.433
Zn	61.902	+/-	8.251
As	4916.964	+/-	123.595
Se	1.000	+/-	14.763
Rb	1.000	+/-	21.107
Sr	14.242	+/-	2.840
Y	1.000	+/-	10.325
Zr	1.000	+/-	43.784
Nb	42.454	+/-	12.603
Ag	8.824	+/-	3.784
Cd	18.568	+/-	5.786
Sn	131.671	+/-	10.174
Sb	1.000	+/-	17.958
Ba	1.000	+/-	39.771
La	1.000	+/-	37.147
Ce	-339.000	+/-	81.018
Au	1.000	+/-	15.537
Hg	1.000	+/-	9.006
Pb	18704.799	+/-	253.016
Bi	1.000	+/-	617.963
Th	1.000	+/-	624.352

mRFA -Ergebnisse

XL3t-69288

Reading No 4  
Mode Mining  
Time Invalid  
Duration 120.68  
Units ppm  
Sigma Value 2  
Sequence Final  
Flags 3mm  
INV NR Gm1055  
OBJEKT TAFELGEMAELEN  
MATERIAL HOLZ METALL FASSUNG  
ANALYSESTELLE P4 VORHANG BLAU  
MESSAUFBAU STATIV  
FILTER m30lo30hi30li30  
User Login Raquet



Ele	ppm	+/-	$\pm 2\sigma$
Mg	1.000	+/-	5391.194
Al	1301.567	+/-	540.487
Bal	894361.250	+/-	1052.300
Si	29840.691	+/-	950.345
P	3060.479	+/-	155.842
S	11498.547	+/-	249.435
Cl	2145.594	+/-	70.904
K	4576.695	+/-	259.292
Ca	10418.426	+/-	304.973
Ti	1.000	+/-	101.899
V	1.000	+/-	33.720
Cr	1.000	+/-	40.209
Mn	207.955	+/-	97.672
Fe	6403.133	+/-	236.032
Co	837.420	+/-	97.280
Ni	1.000	+/-	41.398
Cu	7138.362	+/-	185.464
Zn	60.604	+/-	18.926
As	4938.449	+/-	176.815
Se	1.000	+/-	20.038
Rb	1.000	+/-	42.595
Sr	18.321	+/-	4.691
Y	1.000	+/-	16.639
Zr	1.000	+/-	69.161
Nb	26.662	+/-	19.829
Ag	1.000	+/-	9.175
Cd	35.960	+/-	15.651
Sn	2306.922	+/-	84.547
Sb	1.000	+/-	59.170
Ba	1.000	+/-	100.519
La	1.000	+/-	95.578
Ce	1.000	+/-	116.044
Au	1.000	+/-	27.401
Hg	1.000	+/-	16.477
Pb	20822.951	+/-	401.218
Bi	1.000	+/-	820.011
Th	1.000	+/-	946.236

mRFA -Ergebnisse

XL3t-69288

Reading No 5  
Mode Mining  
Time Invalid  
Duration 120.21  
Units ppm  
Sigma Value 2  
Sequence Final  
Flags 3mm  
INV NR Gm1055  
OBJEKT TAFELGEMAELEN  
MATERIAL HOLZ METALL FASSUNG  
ANALYSESTELLE P5 VORHANG BLAU 2  
MESSAUFBAU STATIV  
FILTER m30lo30hi30li30  
User Login Raquet

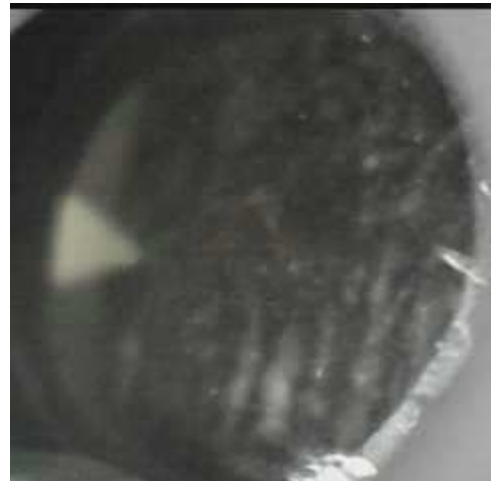


Ele	ppm	+/-	$\pm 2\sigma$
Mg	1.000	+/-	9413.254
Al	831.609	+/-	553.405
Bal	895098.875	+/-	1103.361
Si	9529.181	+/-	535.462
P	1002.576	+/-	111.179
S	6309.698	+/-	159.611
Cl	1337.505	+/-	57.623
K	7397.414	+/-	335.095
Ca	38505.797	+/-	812.974
Ti	1.000	+/-	125.622
V	1.000	+/-	30.839
Cr	1.000	+/-	27.984
Mn	280.951	+/-	106.106
Fe	14343.660	+/-	436.536
Co	2026.314	+/-	157.716
Ni	69.408	+/-	52.773
Cu	553.910	+/-	44.716
Zn	58.319	+/-	13.554
As	5151.170	+/-	185.227
Se	1.000	+/-	21.837
Rb	1.000	+/-	40.652
Sr	39.990	+/-	5.571
Y	1.000	+/-	16.377
Zr	1.000	+/-	70.350
Nb	1.000	+/-	31.360
Ag	1.000	+/-	7.370
Cd	18.030	+/-	14.408
Sn	198.198	+/-	31.982
Sb	1.000	+/-	35.307
Ba	1.000	+/-	100.436
La	1.000	+/-	95.364
Ce	1.000	+/-	115.794
Au	1.000	+/-	30.226
Hg	1.000	+/-	18.713
Pb	17247.463	+/-	363.758
Bi	1.000	+/-	979.692
Th	1.000	+/-	970.396

mRFA -Ergebnisse

XL3t-69288

Reading No 6  
Mode Mining  
Time Invalid  
Duration 122.12  
Units ppm  
Sigma Value 2  
Sequence Final  
Flags  
INV NR Gm1055  
OBJEKT TAFELGEMAELEN  
MATERIAL HOLZ METALL FASSUNG  
ANALYSESTELLE P6 VORHANG ROT  
MESSAUFBAU STATIV  
FILTER m30lo30hi30li30  
User Login Raquet



Ele	ppm	+/-	$\pm 2\sigma$
Mg	1.000	+/-	11621.126
Al	5624.022	+/-	874.086
Bal	822880.000	+/-	1952.132
Si	25251.170	+/-	753.125
P	3926.108	+/-	167.328
S	16494.730	+/-	305.920
Cl	1947.698	+/-	54.532
K	3530.364	+/-	284.253
Ca	45119.109	+/-	825.803
Ti	269.945	+/-	160.223
V	1.000	+/-	38.537
Cr	1.000	+/-	36.612
Mn	153.953	+/-	114.810
Fe	10068.959	+/-	313.101
Co	1.000	+/-	117.790
Ni	1.000	+/-	61.069
Cu	1039.150	+/-	58.794
Zn	442.656	+/-	63.874
As	2805.439	+/-	161.714
Se	1.000	+/-	20.278
Rb	1.000	+/-	35.554
Sr	1.000	+/-	16.688
Y	1.000	+/-	19.781
Zr	1.000	+/-	74.636
Nb	1.000	+/-	20.776
Ag	28.658	+/-	9.243
Cd	221.006	+/-	20.317
Sn	21562.752	+/-	397.406
Sb	1.000	+/-	31.112
Ba	1.000	+/-	101.454
La	1.000	+/-	95.890
Ce	-339.000	+/-	211.271
Au	1.000	+/-	125.478
Hg	21488.527	+/-	390.790
Pb	17145.750	+/-	346.374
Bi	1.000	+/-	808.277
Th	1.000	+/-	1241.195

mRFA -Ergebnisse

XL3t-69288

Reading No 7  
Mode Mining  
Time Invalid  
Duration 122.20  
Units ppm  
Sigma Value 2  
Sequence Final  
Flags  
INV NR Gm1055  
OBJEKT TAFELGEMAELEN  
MATERIAL HOLZ METALL FASSUNG  
ANALYSESTELLE P7 VORHANG ROTE FARBE  
MESSAUFBAU STATIV  
FILTER m30lo30hi30li30  
User Login Raquet



Ele	ppm	+/-	$\pm 2\sigma$
Mg	1.000	+/-	6078.141
Al	2288.475	+/-	577.097
Bal	873733.750	+/-	1018.365
Si	14199.721	+/-	488.055
P	20011.357	+/-	311.761
S	45247.676	+/-	510.907
Cl	1357.531	+/-	34.347
K	706.157	+/-	117.733
Ca	11318.315	+/-	216.321
Ti	1.000	+/-	114.759
V	1.000	+/-	31.945
Cr	1.000	+/-	21.629
Mn	103.282	+/-	82.834
Fe	226.258	+/-	64.988
Co	1.000	+/-	49.885
Ni	1.000	+/-	39.303
Cu	4207.039	+/-	92.854
Zn	656.047	+/-	54.531
As	1273.857	+/-	66.660
Se	38.567	+/-	27.548
Rb	1.000	+/-	13.920
Sr	1.000	+/-	12.175
Y	1.000	+/-	7.645
Zr	1.000	+/-	29.226
Nb	1.000	+/-	7.771
Ag	4.479	+/-	4.231
Cd	11.171	+/-	6.526
Sn	13.993	+/-	8.946
Sb	1.000	+/-	23.963
Ba	1.000	+/-	48.270
La	1.000	+/-	44.958
Ce	-339.000	+/-	98.754
Au	1.000	+/-	98.390
Hg	20936.262	+/-	254.922
Pb	3666.058	+/-	73.152
Bi	1.000	+/-	321.661
Th	1.000	+/-	416.794

mRFA -Ergebnisse

XL3t-69288

Reading No 8  
Mode Mining  
Time Invalid  
Duration 120.49  
Units ppm  
Sigma Value 2  
Sequence Final  
Flags  
INV NR Gm1055  
OBJEKT TAFELGEMAELEN  
MATERIAL HOLZ METALL FASSUNG  
ANALYSESTELLE P8 MANTELFUTTER BLAU  
MESSAUFBAU STATIV  
FILTER m30lo30hi30li30  
User Login Raquet



Ele	ppm	+/-	$\pm 2\sigma$
Mg	9477.430	+/-	6321.084
Al	1721.722	+/-	531.562
Bal	854846.063	+/-	1405.239
Si	8331.946	+/-	347.625
P	1424.898	+/-	106.768
S	22596.016	+/-	397.121
Cl	1730.958	+/-	43.424
K	1.000	+/-	106.126
Ca	2667.745	+/-	106.466
Ti	1.000	+/-	144.284
V	1.000	+/-	32.075
Cr	1.000	+/-	20.908
Mn	183.803	+/-	77.520
Fe	723.595	+/-	72.449
Co	1.000	+/-	38.939
Ni	1.000	+/-	36.659
Cu	43458.184	+/-	695.650
Zn	1.000	+/-	29.280
As	6995.173	+/-	252.275
Se	1.000	+/-	17.646
Rb	1.000	+/-	51.612
Sr	1.000	+/-	5.999
Y	1.000	+/-	26.376
Zr	1.000	+/-	104.887
Nb	62.855	+/-	31.790
Ag	1.000	+/-	5.372
Cd	1.000	+/-	8.427
Sn	1.000	+/-	20.664
Sb	1.000	+/-	27.543
Ba	1.000	+/-	119.663
La	1.000	+/-	70.537
Ce	-339.000	+/-	154.854
Au	1.000	+/-	31.853
Hg	1.000	+/-	19.114
Pb	45779.613	+/-	803.917
Bi	1.000	+/-	1189.385
Th	1.000	+/-	1437.619



mRFA -Ergebnisse

XL3t-69288

Reading No 9  
Mode Mining  
Time Invalid  
Duration 120.54  
Units ppm  
Sigma Value 2  
Sequence Final  
Flags  
INV NR Gm1055  
OBJEKT TAFELGEMAELEN  
MATERIAL HOLZ METALL FASSUNG  
ANALYSESTELLE P8 MANTELFUTTER BLAU  
MESSAUFBAU STATIV  
FILTER m30lo30hi30li30  
User Login Raquet



Ele	ppm	+/-	$\pm 2\sigma$
Mg	1.000	+/-	4767.884
Al	771.073	+/-	401.229
Bal	859570.188	+/-	1226.068
Si	9010.248	+/-	310.160
P	998.607	+/-	76.305
S	13164.326	+/-	201.567
Cl	1045.200	+/-	26.987
K	1.000	+/-	133.991
Ca	3351.091	+/-	110.630
Ti	1.000	+/-	208.317
V	1.000	+/-	43.996
Cr	1.000	+/-	20.706
Mn	292.392	+/-	74.572
Fe	1612.379	+/-	84.251
Co	1.000	+/-	39.281
Ni	1.000	+/-	33.665
Cu	80070.008	+/-	1072.951
Zn	1.000	+/-	36.284
As	3314.240	+/-	179.952
Se	1.000	+/-	16.985
Rb	1.000	+/-	35.598
Sr	1.000	+/-	6.237
Y	1.000	+/-	18.990
Zr	1.000	+/-	77.282
Nb	1.000	+/-	35.234
Ag	1.000	+/-	4.386
Cd	1.000	+/-	7.069
Sn	35.111	+/-	11.787
Sb	39.138	+/-	22.012
Ba	138.895	+/-	64.995
La	1.000	+/-	58.535
Ce	-339.000	+/-	126.920
Au	1.000	+/-	25.317
Hg	1.000	+/-	14.844
Pb	26587.166	+/-	456.511
Bi	1.000	+/-	876.801
Th	1.000	+/-	1089.789

mRFA -Ergebnisse

XL3t-69288

Reading No 10  
Mode Mining  
Time Invalid  
Duration 121.31  
Units ppm  
Sigma Value 2  
Sequence Final  
Flags  
INV NR Gm1055  
OBJEKT TAFELGEMAELEN  
MATERIAL HOLZ METALL FASSUNG  
ANALYSESTELLE P10 BROKAT WOLKE  
MESSAUFBAU STATIV  
FILTER m30lo30hi30li30  
User Login Raquet



Ele	ppm	+/-	$\pm 2\sigma$
Mg	1.000	+/-	5595.046
Al	2223.855	+/-	583.021
Bal	909278.188	+/-	694.712
Si	12444.462	+/-	480.176
P	766.409	+/-	106.213
S	11464.637	+/-	198.437
Cl	1276.324	+/-	40.026
K	961.172	+/-	230.432
Ca	32240.754	+/-	555.429
Ti	1.000	+/-	72.925
V	1.000	+/-	13.590
Cr	27.676	+/-	16.024
Mn	1.000	+/-	67.730
Fe	567.105	+/-	65.106
Co	1.000	+/-	28.540
Ni	1.000	+/-	34.617
Cu	302.513	+/-	25.170
Zn	49.618	+/-	12.262
As	2273.762	+/-	106.276
Se	1.000	+/-	10.642
Rb	1.000	+/-	20.067
Sr	6.057	+/-	3.486
Y	1.000	+/-	10.352
Zr	1.000	+/-	43.083
Nb	14.126	+/-	12.100
Ag	25.044	+/-	5.395
Cd	150.040	+/-	11.197
Sn	11646.997	+/-	144.475
Sb	1.000	+/-	17.398
Ba	1.000	+/-	54.709
La	1.000	+/-	51.408
Ce	-339.000	+/-	112.802
Au	1.000	+/-	21.073
Hg	344.137	+/-	17.420
Pb	13937.189	+/-	207.297
Bi	1.000	+/-	571.171
Th	1.000	+/-	619.820

mRFA -Ergebnisse

XL3t-69288

Reading No 11  
Mode Mining  
Time Invalid  
Duration 120.56  
Units ppm  
Sigma Value 2  
Sequence Final  
Flags  
INV NR Gm1055  
OBJEKT TAFELGEMAELEN  
MATERIAL HOLZ METALL FASSUNG  
ANALYSESTELLE P11 BROKAT WOLKE 2  
MESSAUFBAU STATIV  
FILTER m30lo30hi30li30  
User Login Raquet

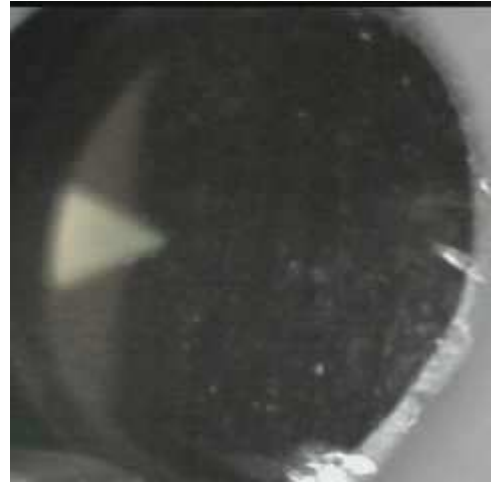


Ele	ppm	+/-	$\pm 2\sigma$
Mg	1.000	+/-	5120.088
Al	2140.771	+/-	562.527
Bal	906779.688	+/-	665.824
Si	16296.688	+/-	533.423
P	1.000	+/-	85.979
S	7322.376	+/-	130.040
Cl	706.825	+/-	31.733
K	938.444	+/-	247.220
Ca	42265.422	+/-	656.829
Ti	1.000	+/-	67.852
V	1.000	+/-	13.462
Cr	1.000	+/-	24.603
Mn	1.000	+/-	64.640
Fe	478.641	+/-	59.605
Co	33.615	+/-	29.931
Ni	1.000	+/-	31.792
Cu	224.236	+/-	21.825
Zn	21.947	+/-	9.303
As	625.559	+/-	91.642
Se	1.000	+/-	10.040
Rb	1.000	+/-	18.983
Sr	8.104	+/-	2.916
Y	1.000	+/-	9.409
Zr	1.000	+/-	39.762
Nb	12.491	+/-	11.138
Ag	22.551	+/-	4.785
Cd	121.490	+/-	9.547
Sn	9053.019	+/-	108.352
Sb	1.000	+/-	15.489
Ba	1.000	+/-	48.231
La	1.000	+/-	45.081
Ce	-339.000	+/-	98.463
Au	1.000	+/-	14.703
Hg	11.356	+/-	9.288
Pb	12936.777	+/-	183.959
Bi	1.000	+/-	491.922
Th	1.000	+/-	574.938

mRFA -Ergebnisse

XL3t-69288

Reading No 12  
Mode Mining  
Time Invalid  
Duration 121.78  
Units ppm  
Sigma Value 2  
Sequence Final  
Flags  
INV NR Gm1055  
OBJEKT TAFELGEMAELEN  
MATERIAL HOLZ METALL FASSUNG  
ANALYSESTELLE P12 MANTELFUTTER ROTLACK  
MESSAUFBAU STATIV  
FILTER m30lo30hi30li30  
User Login Raquet



Ele	ppm	+/-	$\pm 2\sigma$
Mg	6507.357	+/-	3949.791
Al	3165.648	+/-	409.901
Bal	932322.750	+/-	413.934
Si	10542.979	+/-	328.471
P	1987.966	+/-	84.388
S	8685.833	+/-	99.782
Cl	838.078	+/-	22.752
K	2014.430	+/-	118.355
Ca	22124.381	+/-	259.097
Ti	1.000	+/-	97.384
V	1.000	+/-	13.625
Cr	1.000	+/-	14.907
Mn	1.000	+/-	51.559
Fe	2453.258	+/-	87.666
Co	1.000	+/-	28.085
Ni	1.000	+/-	22.897
Cu	569.044	+/-	25.482
Zn	271.179	+/-	23.584
As	832.161	+/-	37.726
Se	12.746	+/-	9.105
Rb	1.000	+/-	6.406
Sr	1.000	+/-	4.109
Y	1.000	+/-	3.352
Zr	1.000	+/-	16.472
Nb	4.589	+/-	4.369
Ag	5.859	+/-	2.872
Cd	13.900	+/-	4.415
Sn	24.982	+/-	6.116
Sb	1.000	+/-	15.056
Ba	1.000	+/-	29.565
La	1.000	+/-	27.571
Ce	-339.000	+/-	60.110
Au	1.000	+/-	37.073
Hg	5442.237	+/-	58.276
Pb	2180.606	+/-	35.631
Bi	1.000	+/-	202.484
Th	1.000	+/-	218.966

mRFA -Ergebnisse

XL3t-69288

Reading No 13  
Mode Mining  
Time Invalid  
Duration 120.13  
Units ppm  
Sigma Value 2  
Sequence Final  
Flags  
INV NR Gm1055  
OBJEKT TAFELGEMAEDELDE  
MATERIAL HOLZ METALL FASSUNG  
ANALYSESTELLE P13 BROKAT LONGINUS  
MESSAUFBAU STATIV  
FILTER m30lo30hi30li30  
User Login Raquet



Ele	ppm	+/-	$\pm 2\sigma$
Mg	8825.322	+/-	8435.597
Al	2831.680	+/-	815.908
Bal	829638.750	+/-	1589.139
Si	19847.455	+/-	687.217
P	745.667	+/-	127.401
S	14718.104	+/-	283.262
Cl	1848.118	+/-	54.973
K	1752.703	+/-	231.364
Ca	60806.406	+/-	1032.735
Ti	1.000	+/-	117.810
V	1.000	+/-	28.478
Cr	42.087	+/-	22.668
Mn	1.000	+/-	86.545
Fe	1252.801	+/-	101.133
Co	79.863	+/-	45.369
Ni	1.000	+/-	46.857
Cu	1690.233	+/-	65.268
Zn	70.764	+/-	15.848
As	2695.844	+/-	184.543
Se	1.000	+/-	16.069
Rb	1.000	+/-	42.586
Sr	7.874	+/-	5.369
Y	1.000	+/-	20.691
Zr	1.000	+/-	83.081
Nb	39.639	+/-	24.725
Ag	25.218	+/-	8.211
Cd	158.646	+/-	17.180
Sn	20210.170	+/-	319.540
Sb	1.000	+/-	30.716
Ba	1.000	+/-	89.553
La	1.000	+/-	84.703
Ce	-339.000	+/-	185.780
Au	1.000	+/-	28.526
Hg	1.000	+/-	17.026
Pb	32712.684	+/-	557.468
Bi	1.000	+/-	924.422
Th	1.000	+/-	1170.552

mRFA -Ergebnisse

XL3t-69288

Reading No 14  
Mode Mining  
Time Invalid  
Duration 120.83  
Units ppm  
Sigma Value 2  
Sequence Final  
Flags  
INV NR Gm1055  
OBJEKT TAFELGEMAELEN  
MATERIAL HOLZ METALL FASSUNG  
ANALYSESTELLE P14 BROKAT LONGINUS ROSE  
MESSAUFBAU STATIV  
FILTER m30lo30hi30li30  
User Login Raquet



Ele	ppm	+/-	$\pm 2\sigma$
Mg	11434.283	+/-	7833.330
Al	1930.132	+/-	728.059
Bal	849646.000	+/-	1379.490
Si	12048.156	+/-	515.164
P	244.762	+/-	106.808
S	10143.685	+/-	199.854
Cl	1527.816	+/-	48.389
K	1201.205	+/-	243.039
Ca	61556.176	+/-	1031.323
Ti	1.000	+/-	105.496
V	1.000	+/-	19.434
Cr	23.059	+/-	20.701
Mn	1.000	+/-	82.348
Fe	769.226	+/-	85.111
Co	1.000	+/-	37.730
Ni	1.000	+/-	42.955
Cu	786.775	+/-	43.654
Zn	127.408	+/-	21.206
As	2268.961	+/-	167.725
Se	1.000	+/-	15.054
Rb	1.000	+/-	35.576
Sr	1.000	+/-	5.456
Y	1.000	+/-	18.819
Zr	1.000	+/-	74.560
Nb	27.961	+/-	21.931
Ag	19.478	+/-	7.446
Cd	127.650	+/-	15.299
Sn	16445.225	+/-	254.875
Sb	1.000	+/-	25.678
Ba	1.000	+/-	82.006
La	1.000	+/-	77.813
Ce	-339.000	+/-	170.736
Au	1.000	+/-	37.452
Hg	1417.905	+/-	40.178
Pb	28254.189	+/-	475.308
Bi	1.000	+/-	891.175
Th	1.000	+/-	1054.017

mRFA -Ergebnisse

XL3t-69288

Reading No 15  
Mode Mining  
Time Invalid  
Duration 120.67  
Units ppm  
Sigma Value 2  
Sequence Final  
Flags  
INV NR Gm1055  
OBJEKT TAFELGEMAELEN  
MATERIAL HOLZ METALL FASSUNG  
ANALYSESTELLE P15 BROKAT LONGINUS ROT  
MESSAUFBAU STATIV  
FILTER m30lo30hi30li30  
User Login Raquet



Ele	ppm	+/-	$\pm 2\sigma$
Mg	1.000	+/-	8082.041
Al	2556.412	+/-	724.834
Bal	861572.250	+/-	1357.873
Si	21248.193	+/-	674.361
P	3314.998	+/-	160.946
S	18272.135	+/-	309.017
Cl	2068.593	+/-	54.562
K	1370.595	+/-	241.508
Ca	35149.563	+/-	622.777
Ti	1.000	+/-	115.888
V	1.000	+/-	23.088
Cr	23.559	+/-	22.778
Mn	1.000	+/-	95.371
Fe	798.868	+/-	94.321
Co	65.401	+/-	45.834
Ni	1.000	+/-	52.647
Cu	1532.488	+/-	62.888
Zn	321.444	+/-	45.411
As	2274.042	+/-	131.146
Se	1.000	+/-	18.256
Rb	1.000	+/-	26.917
Sr	1.000	+/-	10.593
Y	1.000	+/-	14.905
Zr	1.000	+/-	58.097
Nb	1.000	+/-	15.828
Ag	27.556	+/-	7.958
Cd	223.056	+/-	17.862
Sn	23314.922	+/-	366.698
Sb	1.000	+/-	26.880
Ba	1.000	+/-	88.253
La	1.000	+/-	83.317
Ce	-339.000	+/-	183.490
Au	1.000	+/-	83.643
Hg	11688.178	+/-	193.134
Pb	14177.791	+/-	247.678
Bi	1.000	+/-	637.794
Th	1.000	+/-	834.792

mRFA -Ergebnisse

XL3t-69288

Reading No 16  
Mode Mining  
Time Invalid  
Duration 122.11  
Units ppm  
Sigma Value 2  
Sequence Final  
Flags 3mm  
INV NR Gm1055  
OBJEKT TAFELGEMAELEN  
MATERIAL HOLZ METALL FASSUNG  
ANALYSESTELLE P16 BROKAT LONGINUS KLEBMITTEL  
MESSAUFBAU STATIV  
FILTER m30lo30hi30li30  
User Login Raquet



Ele	ppm	+/-	$\pm 2\sigma$
Mg	1.000	+/-	6025.145
Al	2333.821	+/-	627.254
Bal	897357.563	+/-	1079.837
Si	15082.295	+/-	657.794
P	1959.221	+/-	157.695
S	23777.533	+/-	516.419
Cl	3365.315	+/-	99.533
K	825.100	+/-	171.880
Ca	14429.338	+/-	389.580
Ti	1.000	+/-	106.669
V	1.000	+/-	20.811
Cr	1.000	+/-	26.953
Mn	1.000	+/-	82.743
Fe	415.051	+/-	80.482
Co	1.000	+/-	36.859
Ni	1.000	+/-	38.562
Cu	289.515	+/-	31.968
Zn	150.729	+/-	17.413
As	6188.271	+/-	215.586
Se	1.000	+/-	16.632
Rb	1.000	+/-	43.784
Sr	13.986	+/-	5.414
Y	1.000	+/-	21.622
Zr	1.000	+/-	87.171
Nb	47.198	+/-	26.147
Ag	1.000	+/-	8.089
Cd	29.482	+/-	16.296
Sn	2399.127	+/-	91.823
Sb	1.000	+/-	52.385
Ba	1.000	+/-	107.725
La	1.000	+/-	104.421
Ce	1.000	+/-	128.012
Au	1.000	+/-	31.552
Hg	1.000	+/-	18.577
Pb	31336.486	+/-	602.440
Bi	1.000	+/-	1015.034
Th	1.000	+/-	1174.326



mRFA -Ergebnisse

XL3t-69288

Reading No 17  
Mode Mining  
Time Invalid  
Duration 120.07  
Units ppm  
Sigma Value 2  
Sequence Final  
Flags 3mm  
INV NR Gm1055  
OBJEKT TAFELGEMAELEN  
MATERIAL HOLZ METALL FASSUNG  
ANALYSESTELLE P17 BROKAT HAUPTMANN  
MESSAUFBAU STATIV  
FILTER m30lo30hi30li30  
User Login Raquet



Ele	ppm	+/-	$\pm 2\sigma$
Mg	1.000	+/-	7329.829
Al	978.854	+/-	703.151
Bal	882950.688	+/-	1360.258
Si	23081.680	+/-	939.259
P	1139.914	+/-	143.299
S	9465.125	+/-	237.103
Cl	1467.772	+/-	75.031
K	1895.826	+/-	333.794
Ca	31026.580	+/-	780.145
Ti	1.000	+/-	137.551
V	1.000	+/-	26.698
Cr	1.000	+/-	49.760
Mn	1.000	+/-	108.266
Fe	837.895	+/-	108.922
Co	244.722	+/-	62.674
Ni	1.000	+/-	49.056
Cu	7754.220	+/-	222.409
Zn	48.155	+/-	23.059
As	2556.494	+/-	172.436
Se	1.000	+/-	17.166
Rb	1.000	+/-	40.074
Sr	30.283	+/-	6.137
Y	1.000	+/-	18.540
Zr	1.000	+/-	78.123
Nb	24.067	+/-	22.301
Ag	23.818	+/-	13.546
Cd	145.453	+/-	28.293
Sn	15341.342	+/-	351.691
Sb	1.000	+/-	61.381
Ba	1.000	+/-	149.299
La	1.000	+/-	144.373
Ce	1.000	+/-	177.512
Au	1.000	+/-	31.437
Hg	1.000	+/-	18.875
Pb	20987.109	+/-	443.611
Bi	1.000	+/-	944.702
Th	1.000	+/-	1069.742

mRFA -Ergebnisse

XL3t-69288

Reading No 18  
Mode Mining  
Time Invalid  
Duration 121.10  
Units ppm  
Sigma Value 2  
Sequence Final  
Flags  
INV NR Gm1055  
OBJEKT TAFELGEMAELEN  
MATERIAL HOLZ METALL FASSUNG  
ANALYSESTELLE P18 BROKAT HAUPTMANN  
MESSAUFBAU STATIV  
FILTER m30lo30hi30li30  
User Login Raquet



Ele	ppm	+/-	$\pm 2\sigma$
Mg	1.000	+/-	7507.396
Al	1700.259	+/-	674.972
Bal	868197.125	+/-	1038.591
Si	15397.534	+/-	567.375
P	285.020	+/-	111.927
S	11844.259	+/-	205.965
Cl	832.422	+/-	36.927
K	758.386	+/-	254.066
Ca	64021.098	+/-	960.266
Ti	1.000	+/-	80.296
V	1.000	+/-	22.125
Cr	48.470	+/-	17.303
Mn	1.000	+/-	76.840
Fe	443.858	+/-	67.062
Co	44.320	+/-	34.646
Ni	1.000	+/-	39.289
Cu	170.966	+/-	23.364
Zn	32.119	+/-	10.954
As	1537.328	+/-	124.148
Se	1.000	+/-	12.453
Rb	1.000	+/-	24.709
Sr	72.106	+/-	5.161
Y	1.000	+/-	12.620
Zr	1.000	+/-	53.946
Nb	24.866	+/-	15.363
Ag	34.743	+/-	6.264
Cd	184.336	+/-	13.006
Sn	15761.031	+/-	206.327
Sb	1.000	+/-	19.745
Ba	1.000	+/-	62.919
La	1.000	+/-	58.981
Ce	-339.000	+/-	129.798
Au	1.000	+/-	19.182
Hg	1.000	+/-	11.168
Pb	18609.748	+/-	284.111
Bi	1.000	+/-	603.379
Th	1.000	+/-	775.532

mRFA -Ergebnisse

XL3t-69288

Reading No 19  
Mode Mining  
Time Invalid  
Duration 122.44  
Units ppm  
Sigma Value 2  
Sequence Final  
Flags 3mm  
INV NR Gm1055  
OBJEKT TAFELGEMAELEN  
MATERIAL HOLZ METALL FASSUNG  
ANALYSESTELLE P19 ZAUMZEUG  
MESSAUFBAU STATIV  
FILTER m30lo30hi30li30  
User Login Raquet

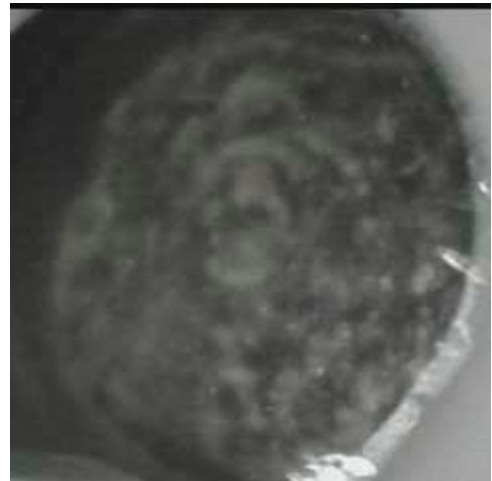


Ele	ppm	+/-	$\pm 2\sigma$
Mg	1.000	+/-	18368.275
Al	4759.522	+/-	1291.886
Bal	736885.063	+/-	5608.717
Si	19296.828	+/-	1032.234
P	2582.635	+/-	246.481
S	40869.918	+/-	1395.600
Cl	3547.607	+/-	162.835
K	861.161	+/-	291.828
Ca	2212.870	+/-	341.829
Ti	1.000	+/-	163.267
V	1.000	+/-	35.116
Cr	1.000	+/-	48.012
Mn	289.911	+/-	158.142
Fe	3944.927	+/-	268.642
Co	128.858	+/-	99.058
Ni	101.315	+/-	79.637
Cu	362.950	+/-	53.487
Zn	129.113	+/-	27.713
As	12318.370	+/-	625.268
Se	1.000	+/-	34.065
Rb	1.000	+/-	215.210
Sr	1.000	+/-	18.608
Y	1.000	+/-	90.486
Zr	1.000	+/-	333.411
Nb	225.445	+/-	119.545
Ag	1.000	+/-	25.282
Cd	1.000	+/-	50.429
Sn	27539.109	+/-	1032.160
Sb	1.000	+/-	158.857
Ba	424.080	+/-	359.005
La	1.000	+/-	492.227
Ce	1.000	+/-	686.785
Au	1.000	+/-	97.002
Hg	1.000	+/-	56.082
Pb	143520.297	+/-	4178.007
Bi	1.000	+/-	3330.755
Th	1.000	+/-	5828.129

mRFA -Ergebnisse

XL3t-69288

Reading No 20  
Mode Mining  
Time Invalid  
Duration 121.69  
Units ppm  
Sigma Value 2  
Sequence Final  
Flags  
INV NR Gm1055  
OBJEKT TAFELGEMAELEN  
MATERIAL HOLZ METALL FASSUNG  
ANALYSESTELLE P20 BROKAT RECHTS  
MESSAUFBAU STATIV  
FILTER m30lo30hi30li30  
User Login Raquet



Ele	ppm	+/-	$\pm 2\sigma$
Mg	9440.278	+/-	7017.886
Al	2471.307	+/-	683.135
Bal	856939.188	+/-	1214.107
Si	12391.690	+/-	498.447
P	741.860	+/-	111.555
S	12435.871	+/-	225.303
Cl	1441.121	+/-	43.722
K	896.470	+/-	213.655
Ca	56131.758	+/-	893.452
Ti	1.000	+/-	84.567
V	1.000	+/-	21.365
Cr	25.434	+/-	17.663
Mn	1.000	+/-	75.807
Fe	515.043	+/-	70.777
Co	1.000	+/-	32.967
Ni	1.000	+/-	39.951
Cu	2080.962	+/-	67.615
Zn	63.364	+/-	13.901
As	3039.920	+/-	154.488
Se	1.000	+/-	13.786
Rb	1.000	+/-	33.141
Sr	4.988	+/-	4.181
Y	1.000	+/-	16.291
Zr	1.000	+/-	66.080
Nb	24.751	+/-	19.229
Ag	17.953	+/-	6.302
Cd	133.907	+/-	13.306
Sn	15998.557	+/-	226.186
Sb	1.000	+/-	21.653
Ba	1.000	+/-	68.871
La	1.000	+/-	64.944
Ce	-339.000	+/-	142.103
Au	1.000	+/-	23.159
Hg	1.000	+/-	13.416
Pb	25205.514	+/-	401.247
Bi	1.000	+/-	765.386
Th	1.000	+/-	939.630

mRFA -Ergebnisse

XL3t-69288

Reading No 21  
Mode Mining  
Time Invalid  
Duration 121.80  
Units ppm  
Sigma Value 2  
Sequence Final  
Flags  
INV NR Gm1055  
OBJEKT TAFELGEMAELENDE  
MATERIAL HOLZ METALL FASSUNG  
ANALYSESTELLE P21 SCHABBRACKE  
MESSAUFBAU STATIV  
FILTER m30lo30hi30li30  
User Login Raquet



Ele	ppm	+/-	$\pm 2\sigma$
Mg	1.000	+/-	10989.033
Al	1211.685	+/-	967.148
Bal	813376.063	+/-	3070.553
Si	12205.908	+/-	645.151
P	9731.616	+/-	351.714
S	45220.508	+/-	1191.424
Cl	2909.370	+/-	101.231
K	594.261	+/-	214.382
Ca	8599.995	+/-	305.494
Ti	1.000	+/-	187.749
V	1.000	+/-	49.100
Cr	1.000	+/-	55.838
Mn	326.217	+/-	149.965
Fe	233.190	+/-	119.321
Co	177.254	+/-	65.513
Ni	144.378	+/-	78.198
Cu	260.849	+/-	48.275
Zn	793.256	+/-	110.458
As	12324.276	+/-	413.183
Se	48.127	+/-	34.376
Rb	1.000	+/-	79.739
Sr	1.000	+/-	43.001
Y	1.000	+/-	56.382
Zr	1.000	+/-	152.428
Nb	1.000	+/-	45.288
Ag	1.000	+/-	17.327
Cd	1.000	+/-	16.906
Sn	84.506	+/-	28.684
Sb	1.000	+/-	48.938
Ba	1.000	+/-	249.676
La	301.162	+/-	148.194
Ce	200.565	+/-	323.928
Au	1.000	+/-	266.152
Hg	56686.039	+/-	1342.811
Pb	34230.809	+/-	986.348
Bi	1.000	+/-	1523.669
Th	1.000	+/-	3138.117

mRFA -Ergebnisse

XL3t-69288

Reading No 22  
Mode Mining  
Time Invalid  
Duration 120.69  
Units ppm  
Sigma Value 2  
Sequence Final  
Flags  
INV NR Gm1055  
OBJEKT TAFELGEMAELEN  
MATERIAL HOLZ METALL FASSUNG  
ANALYSESTELLE P22 SCHABBRACKEN WEISS  
MESSAUFBAU STATIV  
FILTER m30lo30hi30li30  
User Login Raquet



Ele	ppm	+/-	$\pm 2\sigma$
Mg	22014.574	+/-	13924.216
Al	4253.644	+/-	1287.572
Bal	670101.000	+/-	6784.558
Si	18982.650	+/-	756.200
P	3847.695	+/-	230.382
S	51813.445	+/-	1192.960
Cl	4675.220	+/-	140.878
K	309.042	+/-	198.510
Ca	4205.062	+/-	217.171
Ti	1.000	+/-	178.805
V	1.000	+/-	43.915
Cr	1.000	+/-	44.587
Mn	375.326	+/-	138.972
Fe	131.244	+/-	106.171
Co	220.230	+/-	60.740
Ni	265.007	+/-	76.220
Cu	135.906	+/-	39.934
Zn	1.000	+/-	34.899
As	26398.535	+/-	846.551
Se	59.621	+/-	42.586
Rb	1.000	+/-	234.529
Sr	1.000	+/-	26.570
Y	1.000	+/-	102.440
Zr	1.000	+/-	365.085
Nb	1.000	+/-	212.792
Ag	31.374	+/-	17.427
Cd	1.000	+/-	22.045
Sn	102.255	+/-	37.460
Sb	1.000	+/-	62.959
Ba	298.550	+/-	205.207
La	553.408	+/-	199.546
Ce	630.660	+/-	435.061
Au	1.000	+/-	143.466
Hg	7623.156	+/-	230.775
Pb	177638.328	+/-	4838.873
Bi	1.000	+/-	3409.906
Th	4994.014	+/-	4483.526

mRFA -Ergebnisse

XL3t-69288

Reading No 23  
Mode Mining  
Time Invalid  
Duration 121.74  
Units ppm  
Sigma Value 2  
Sequence Final  
Flags  
INV NR Gm1055  
OBJEKT TAFELGEMAELEN  
MATERIAL HOLZ METALL FASSUNG  
ANALYSESTELLE P23 SCHABBRACKE SCHATTEN  
MESSAUFBAU STATIV  
FILTER m30lo30hi30li30  
User Login Raquet



Ele	ppm	+/-	$\pm 2\sigma$
Mg	1.000	+/-	4753.589
Al	2192.491	+/-	451.889
Bal	919351.938	+/-	614.087
Si	16027.692	+/-	447.902
P	1278.170	+/-	94.102
S	14327.545	+/-	190.582
Cl	1187.262	+/-	30.859
K	3767.300	+/-	175.119
Ca	12674.356	+/-	223.503
Ti	1.000	+/-	94.211
V	1.000	+/-	19.219
Cr	1.000	+/-	19.888
Mn	1.000	+/-	66.373
Fe	5573.624	+/-	159.117
Co	1.000	+/-	49.412
Ni	1.000	+/-	33.813
Cu	1759.160	+/-	53.590
Zn	319.236	+/-	38.617
As	2211.035	+/-	78.867
Se	25.839	+/-	18.456
Rb	1.000	+/-	14.746
Sr	1.000	+/-	8.553
Y	1.000	+/-	7.953
Zr	1.000	+/-	32.440
Nb	1.000	+/-	8.521
Ag	1.000	+/-	5.134
Cd	9.878	+/-	6.353
Sn	36.836	+/-	9.286
Sb	1.000	+/-	19.669
Ba	1.000	+/-	47.029
La	1.000	+/-	43.925
Ce	-339.000	+/-	95.667
Au	1.000	+/-	71.085
Hg	12931.561	+/-	159.750
Pb	6326.112	+/-	98.140
Bi	1.000	+/-	364.695
Th	1.000	+/-	464.049

mRFA -Ergebnisse

XL3t-69288

Reading No 24  
Mode Mining  
Time Invalid  
Duration 122.07  
Units ppm  
Sigma Value 2  
Sequence Final  
Flags  
INV NR Gm1055  
OBJEKT TAFELGEMAELEN  
MATERIAL HOLZ METALL FASSUNG  
ANALYSESTELLE P24 INKARNAT  
MESSAUFBAU STATIV  
FILTER m30lo30hi30li30  
User Login Raquet



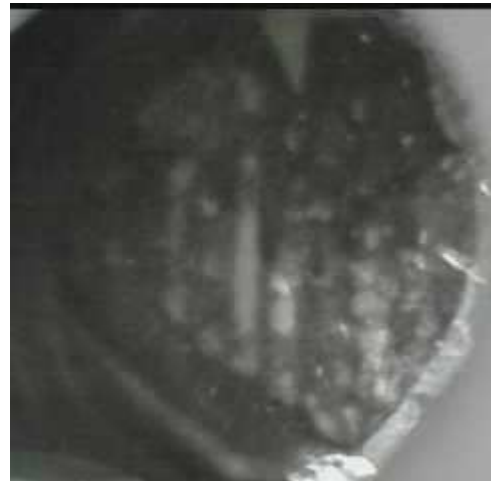
Ele	ppm	+/-	$\pm 2\sigma$
Mg	1.000	+/-	9780.497
Al	2221.479	+/-	560.254
Bal	861608.188	+/-	1268.586
Si	22344.855	+/-	646.986
P	2056.323	+/-	131.928
S	28873.375	+/-	549.384
Cl	2285.393	+/-	57.248
K	3689.901	+/-	195.243
Ca	4547.973	+/-	156.178
Ti	1.000	+/-	88.563
V	1.000	+/-	22.123
Cr	1.000	+/-	25.720
Mn	1.000	+/-	105.607
Fe	5383.220	+/-	179.191
Co	1.000	+/-	56.745
Ni	1.000	+/-	41.252
Cu	144.556	+/-	22.426
Zn	88.632	+/-	11.865
As	9916.170	+/-	273.401
Se	1.000	+/-	17.092
Rb	1.000	+/-	57.243
Sr	1.000	+/-	6.032
Y	1.000	+/-	27.905
Zr	1.000	+/-	110.475
Nb	86.738	+/-	35.199
Ag	9.907	+/-	5.772
Cd	12.220	+/-	8.542
Sn	28.565	+/-	12.231
Sb	48.357	+/-	23.337
Ba	1.000	+/-	66.237
La	1.000	+/-	61.947
Ce	-339.000	+/-	135.586
Au	1.000	+/-	34.544
Hg	1.000	+/-	20.359
Pb	56654.105	+/-	939.673
Bi	1.000	+/-	1146.573
Th	1.000	+/-	1606.693



mRFA -Ergebnisse

XL3t-69288

Reading No 25  
Mode Mining  
Time Invalid  
Duration 121.29  
Units ppm  
Sigma Value 2  
Sequence Final  
Flags  
INV NR Gm1055  
OBJEKT TAFELGEMAELEN  
MATERIAL HOLZ METALL FASSUNG  
ANALYSESTELLE P25 BROKAT MAGDA  
MESSAUFBAU STATIV  
FILTER m30lo30hi30li30  
User Login Raquet



Ele	ppm	+/-	$\pm 2\sigma$
Mg	7321.826	+/-	5906.458
Al	2900.798	+/-	613.690
Bal	907985.563	+/-	666.022
Si	10877.648	+/-	444.283
P	1.000	+/-	87.269
S	8098.437	+/-	133.777
Cl	744.510	+/-	32.815
K	955.919	+/-	243.906
Ca	37596.184	+/-	565.903
Ti	1.000	+/-	96.370
V	1.000	+/-	19.172
Cr	20.066	+/-	15.303
Mn	1.000	+/-	65.037
Fe	585.805	+/-	62.557
Co	1.000	+/-	35.195
Ni	1.000	+/-	33.177
Cu	236.914	+/-	22.184
Zn	20.998	+/-	8.966
As	1091.609	+/-	77.190
Se	1.000	+/-	8.850
Rb	1.000	+/-	15.191
Sr	10.275	+/-	2.563
Y	1.000	+/-	7.413
Zr	1.000	+/-	32.226
Nb	1.000	+/-	13.698
Ag	23.896	+/-	4.806
Cd	165.205	+/-	10.417
Sn	12712.571	+/-	142.553
Sb	1.000	+/-	15.176
Ba	1.000	+/-	48.502
La	1.000	+/-	45.529
Ce	-339.000	+/-	99.626
Au	1.000	+/-	12.767
Hg	1.000	+/-	6.982
Pb	8651.711	+/-	121.227
Bi	1.000	+/-	365.135
Th	1.000	+/-	469.067

mRFA -Ergebnisse

XL3t-69288

Reading No 26  
Mode Mining  
Time Invalid  
Duration 121.57  
Units ppm  
Sigma Value 2  
Sequence Final  
Flags  
INV NR Gm1055  
OBJEKT TAFELGEMAELEN  
MATERIAL HOLZ METALL FASSUNG  
ANALYSESTELLE P26 MANTEL MARIA  
MESSAUFBAU STATIV  
FILTER m30lo30hi30li30  
User Login Raquet



Ele	ppm	+/-	$\pm 2\sigma$
Mg	1.000	+/-	3674.964
Al	2473.267	+/-	386.742
Bal	933450.000	+/-	398.596
Si	17906.066	+/-	449.240
P	1381.317	+/-	91.480
S	18932.732	+/-	261.571
Cl	1130.283	+/-	27.521
K	1076.322	+/-	96.583
Ca	3324.784	+/-	93.666
Ti	198.646	+/-	72.494
V	1.000	+/-	17.638
Cr	1.000	+/-	22.288
Mn	1.000	+/-	46.765
Fe	5109.458	+/-	128.085
Co	1.000	+/-	34.698
Ni	1.000	+/-	21.292
Cu	158.654	+/-	15.657
Zn	35.709	+/-	6.593
As	3285.493	+/-	85.647
Se	1.000	+/-	9.358
Rb	1.000	+/-	16.423
Sr	15.894	+/-	2.251
Y	1.000	+/-	7.033
Zr	1.000	+/-	31.700
Nb	24.200	+/-	8.724
Ag	8.490	+/-	3.061
Cd	14.860	+/-	4.583
Sn	31.468	+/-	6.476
Sb	14.614	+/-	11.545
Ba	1.000	+/-	31.209
La	1.000	+/-	29.135
Ce	-339.000	+/-	63.618
Au	1.000	+/-	11.103
Hg	1.000	+/-	6.432
Pb	11427.668	+/-	142.811
Bi	1.000	+/-	451.800
Th	1.000	+/-	449.635

mRFA -Ergebnisse

XL3t-69288

Reading No 27  
Mode Mining  
Time Invalid  
Duration 121.92  
Units ppm  
Sigma Value 2  
Sequence Final  
Flags  
INV NR Gm1055  
OBJEKT TAFELGEMAELEN  
MATERIAL HOLZ METALL FASSUNG  
ANALYSESTELLE P27 MUETZE  
MESSAUFBAU STATIV  
FILTER m30lo30hi30li30  
User Login Raquet



Ele	ppm	+/-	$\pm 2\sigma$
Mg	1.000	+/-	7110.161
Al	1228.504	+/-	485.128
Bal	872317.375	+/-	1167.615
Si	9149.190	+/-	364.804
P	2007.205	+/-	116.916
S	25211.172	+/-	441.414
Cl	1735.515	+/-	43.205
K	201.321	+/-	98.648
Ca	1613.889	+/-	90.688
Ti	1.000	+/-	157.010
V	1.000	+/-	38.968
Cr	1.000	+/-	21.025
Mn	165.681	+/-	75.472
Fe	595.120	+/-	67.189
Co	38.758	+/-	32.088
Ni	1.000	+/-	35.862
Cu	33385.641	+/-	544.907
Zn	1.000	+/-	25.104
As	7913.389	+/-	246.961
Se	1.000	+/-	16.333
Rb	1.000	+/-	48.961
Sr	1.000	+/-	7.137
Y	1.000	+/-	24.587
Zr	1.000	+/-	99.125
Nb	65.041	+/-	30.109
Ag	1.000	+/-	7.150
Cd	1.000	+/-	8.449
Sn	1.000	+/-	17.990
Sb	29.304	+/-	21.900
Ba	1.000	+/-	94.731
La	1.000	+/-	59.411
Ce	-339.000	+/-	130.092
Au	1.000	+/-	31.931
Hg	1.000	+/-	17.875
Pb	44342.953	+/-	753.316
Bi	1.000	+/-	1168.856
Th	1.000	+/-	1359.295