

mRFA -Ergebnisse

XL3t-69288

Reading No 24
Mode Mining
Time 2017-11-08 15:28
Duration 120.55
Units ppm
Sigma Value 2
Sequence Final
Flags
INV NR Pl.O.157
OBJEKT TAFELGEMAELEN
MATERIAL HOLZ METALL FASSUNG
ANALYSESTELLE P1 ReSfIAS EHRENTUCH
MESSAUFBAU STATIV
FILTER m30lo30h30li30
User Login Raquet

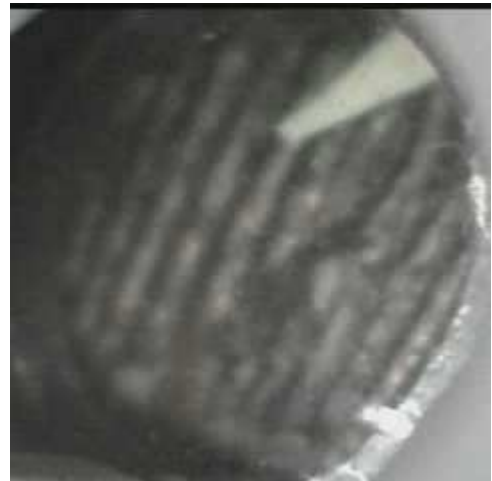


	ppm	+/-	Error
Ce	-339.000	+/-	132.327
La	1.000	+/-	60.515
Ba	1.000	+/-	64.721
Sb	1.000	+/-	20.191
Sn	12948.176	+/-	167.206
Cd	154.794	+/-	12.903
Ag	30.520	+/-	6.375
Bal	877498.000	+/-	932.097
Nb	1.000	+/-	12.804
Zr	1.000	+/-	41.436
Y	1.000	+/-	8.681
Sr	73.056	+/-	6.677
Rb	1.000	+/-	15.776
Th	1.000	+/-	515.826
Bi	1.000	+/-	508.952
Au	1.000	+/-	37.364
As	1358.839	+/-	86.535
Se	10.581	+/-	10.374
Pb	8809.036	+/-	135.407
Hg	3142.231	+/-	55.276
Zn	115.504	+/-	22.559
Cu	930.072	+/-	41.489
Ni	1.000	+/-	38.376
Co	1.000	+/-	37.557
Fe	1817.628	+/-	100.634
Mn	1.000	+/-	79.408
Cr	44.217	+/-	19.034
V	1.000	+/-	23.231
Ti	1.000	+/-	118.111
Ca	47063.480	+/-	736.241
K	1731.459	+/-	330.442
Al	4559.889	+/-	905.460
P	2198.579	+/-	163.991
Si	21396.076	+/-	726.594
Cl	928.112	+/-	45.188
S	15189.778	+/-	242.291
Mg	1.000	+/-	11900.729

mRFA -Ergebnisse

XL3t-69288

Reading No 25
Mode Mining
Time 2017-11-08 15:32
Duration 122.02
Units ppm
Sigma Value 2
Sequence Final
Flags
INV NR Pl.O.157
OBJEKT TAFELGEMAELEN
MATERIAL HOLZ METALL FASSUNG
ANALYSESTELLE P2 ReSfIAS GEWAND BARBARA
MESSAUFBAU STATIV
FILTER m30lo30h30li30
User Login Raquet

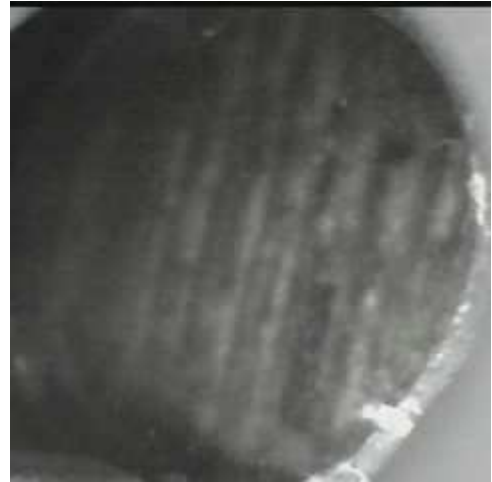


	ppm	+/-	Error
Ce	-339.000	+/-	99.225
La	1.000	+/-	45.677
Ba	1.000	+/-	48.795
Sb	1.000	+/-	15.639
Sn	10746.571	+/-	117.975
Cd	155.187	+/-	10.323
Ag	421.094	+/-	12.542
Bal	870154.875	+/-	854.055
Nb	1.000	+/-	5.269
Zr	1.000	+/-	17.243
Y	1.000	+/-	3.680
Sr	138.403	+/-	4.743
Rb	1.000	+/-	10.698
Th	1.000	+/-	249.536
Bi	1.000	+/-	245.257
Au	582.712	+/-	27.173
As	747.178	+/-	43.102
Se	1.000	+/-	6.086
Pb	2429.723	+/-	41.802
Hg	57.795	+/-	7.780
Zn	42.132	+/-	11.517
Cu	593.884	+/-	30.051
Ni	1.000	+/-	32.063
Co	1.000	+/-	35.383
Fe	2908.067	+/-	107.917
Mn	1.000	+/-	67.029
Cr	49.561	+/-	16.502
V	1.000	+/-	23.479
Ti	178.770	+/-	85.789
Ca	61950.703	+/-	643.870
K	1892.851	+/-	244.447
Al	3090.655	+/-	754.970
P	5946.463	+/-	184.079
Si	22698.557	+/-	664.689
Cl	1524.809	+/-	43.874
S	13690.127	+/-	170.902
Mg	1.000	+/-	6734.104

mRFA -Ergebnisse

XL3t-69288

Reading No 26
Mode Mining
Time 2017-11-08 15:37
Duration 120.59
Units ppm
Sigma Value 2
Sequence Final
Flags
INV NR Pl.O.157
OBJEKT TAFELGEMAELEN
MATERIAL HOLZ METALL FASSUNG
ANALYSESTELLE P3 ReFrFIAS EHRENTUCH MARIA
MESSAUFBAU STATIV
FILTER m30lo30h30li30
User Login Raquet

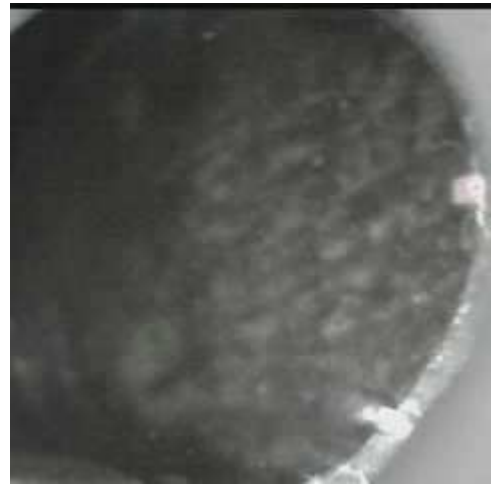


	ppm	+/-	Error
Ce	-339.000	+/-	133.224
La	1.000	+/-	60.435
Ba	1.000	+/-	65.061
Sb	1.000	+/-	19.791
Sn	15031.825	+/-	185.592
Cd	160.972	+/-	12.896
Ag	538.209	+/-	16.667
Bal	887417.750	+/-	860.810
Nb	1.000	+/-	11.146
Zr	1.000	+/-	31.750
Y	1.000	+/-	7.541
Sr	143.845	+/-	5.722
Rb	1.000	+/-	19.752
Th	1.000	+/-	461.834
Bi	1.000	+/-	407.784
Au	576.780	+/-	31.649
As	803.649	+/-	76.809
Se	1.000	+/-	9.621
Pb	7388.498	+/-	112.259
Hg	39.438	+/-	9.771
Zn	38.886	+/-	12.928
Cu	757.812	+/-	37.492
Ni	1.000	+/-	37.825
Co	1.000	+/-	40.173
Fe	2578.392	+/-	115.620
Mn	1.000	+/-	75.817
Cr	58.425	+/-	18.702
V	1.000	+/-	17.479
Ti	1.000	+/-	107.301
Ca	39397.969	+/-	628.093
K	1806.195	+/-	317.739
Al	4088.625	+/-	857.534
P	4315.365	+/-	182.898
Si	16897.840	+/-	640.014
Cl	4074.918	+/-	81.500
S	13884.605	+/-	218.962
Mg	1.000	+/-	8112.025

mRFA -Ergebnisse

XL3t-69288

Reading No 27
Mode Mining
Time 2017-11-08 15:41
Duration 121.23
Units ppm
Sigma Value 2
Sequence Final
Flags
INV NR Pl.O.157
OBJEKT TAFELGEMAELEN
MATERIAL HOLZ METALL FASSUNG
ANALYSESTELLE P4 ReFrFIAS PULTBEHANG
MESSAUFBAU STATIV
FILTER m30lo30h30li30
User Login Raquet



	ppm	+/-	Error
Ce	-339.000	+/-	128.673
La	1.000	+/-	58.623
Ba	1.000	+/-	62.843
Sb	1.000	+/-	19.730
Sn	15039.542	+/-	190.115
Cd	161.082	+/-	12.943
Ag	269.708	+/-	12.105
Bal	824727.250	+/-	1291.235
Nb	14.682	+/-	11.638
Zr	1.000	+/-	42.954
Y	1.000	+/-	10.023
Sr	123.641	+/-	5.607
Rb	1.000	+/-	23.131
Th	1.000	+/-	606.419
Bi	1.000	+/-	618.719
Au	284.758	+/-	27.060
As	1710.847	+/-	101.521
Se	1.000	+/-	11.147
Pb	12191.130	+/-	186.377
Hg	1.000	+/-	8.861
Zn	60.253	+/-	13.108
Cu	1190.984	+/-	46.961
Ni	1.000	+/-	38.237
Co	1.000	+/-	45.362
Fe	3935.471	+/-	143.544
Mn	1.000	+/-	74.187
Cr	64.553	+/-	19.577
V	1.000	+/-	19.162
Ti	219.061	+/-	104.428
Ca	65753.422	+/-	940.053
K	2177.360	+/-	276.973
Al	7134.543	+/-	1032.632
P	3238.627	+/-	173.111
Si	32638.754	+/-	892.944
Cl	3688.844	+/-	77.990
S	14371.979	+/-	236.934
Mg	11003.520	+/-	9053.376

mRFA -Ergebnisse

XL3t-69288

Reading No 28
Mode Mining
Time 2017-11-08 15:47
Duration 120.96
Units ppm
Sigma Value 2
Sequence Final
Flags
INV NR Pl.O.157
OBJEKT TAFELGEMAELEN
MATERIAL HOLZ METALL FASSUNG
ANALYSESTELLE P5 ReFrFIAS RAHMUNG
MESSAUFBAU STATIV
FILTER m30lo30h30li30
User Login Raquet



	ppm	+/-	Error
Ce	-339.000	+/-	109.390
La	1.000	+/-	50.184
Ba	1.000	+/-	53.613
Sb	1.000	+/-	28.597
Sn	31.941	+/-	11.761
Cd	1.000	+/-	10.245
Ag	306.793	+/-	12.984
Bal	845313.625	+/-	1118.183
Nb	1.000	+/-	19.357
Zr	1.000	+/-	47.442
Y	1.000	+/-	11.840
Sr	103.004	+/-	9.494
Rb	1.000	+/-	23.047
Th	1.000	+/-	679.551
Bi	1.000	+/-	581.948
Au	254.351	+/-	59.973
As	3914.288	+/-	122.938
Se	1.000	+/-	15.673
Pb	15608.498	+/-	229.625
Hg	6813.781	+/-	103.479
Zn	427.332	+/-	32.918
Cu	150.812	+/-	21.346
Ni	1.000	+/-	34.325
Co	1.000	+/-	27.595
Fe	338.737	+/-	59.544
Mn	1.000	+/-	91.144
Cr	24.797	+/-	20.926
V	1.000	+/-	24.970
Ti	1.000	+/-	94.064
Ca	48007.148	+/-	682.645
K	1510.991	+/-	183.165
Al	4181.025	+/-	891.336
P	14041.036	+/-	319.843
Si	18399.396	+/-	686.449
Cl	5500.337	+/-	101.139
S	35072.129	+/-	498.153
Mg	1.000	+/-	8750.406

mRFA -Ergebnisse

XL3t-69288

Reading No 29
Mode Mining
Time 2017-11-08 15:50
Duration 121.09
Units ppm
Sigma Value 2
Sequence Final
Flags
INV NR Pl.O.157
OBJEKT TAFELGEMAELEN
MATERIAL HOLZ METALL FASSUNG
ANALYSESTELLE P6 ReFrFIAS NIMBUS ELISABETH
MESSAUFBAU STATIV
FILTER m30lo30h30li30
User Login Raquet



	ppm	+/-	Error
Ce	-339.000	+/-	67.999
La	1.000	+/-	31.208
Ba	1.000	+/-	33.880
Sb	12.553	+/-	12.462
Sn	1.000	+/-	7.321
Cd	14.845	+/-	5.006
Ag	414.249	+/-	11.159
Bal	788304.438	+/-	971.834
Nb	3.182	+/-	3.169
Zr	1.000	+/-	10.365
Y	1.000	+/-	2.176
Sr	220.860	+/-	4.554
Rb	7.881	+/-	5.083
Th	1.000	+/-	155.667
Bi	1.000	+/-	139.475
Au	1076.050	+/-	26.971
As	425.342	+/-	26.173
Se	1.000	+/-	4.333
Pb	1499.857	+/-	23.904
Hg	1.000	+/-	3.160
Zn	52.171	+/-	9.100
Cu	356.913	+/-	18.644
Ni	1.000	+/-	20.022
Co	1.000	+/-	23.036
Fe	2129.937	+/-	71.532
Mn	1.000	+/-	46.050
Cr	40.916	+/-	16.754
V	1.000	+/-	21.558
Ti	177.166	+/-	80.318
Ca	145883.422	+/-	873.142
K	1691.458	+/-	162.497
Al	6591.297	+/-	993.455
P	14439.351	+/-	258.294
Si	23388.684	+/-	706.551
Cl	1380.334	+/-	40.195
S	11889.163	+/-	134.571
Mg	1.000	+/-	9012.399

mRFA -Ergebnisse

XL3t-69288

Reading No 30
Mode Mining
Time 2017-11-08 15:55
Duration 120.84
Units ppm
Sigma Value 2
Sequence Final
Flags
INV NR Pl.O.157
OBJEKT TAFELGEMAELEN
MATERIAL HOLZ METALL FASSUNG
ANALYSESTELLE P7 ReFrFIAS NIMBUS ELISABETH
MESSAUFBAU STATIV
FILTER m30lo30h30li30
User Login Raquet



	ppm	+/-	Error
Ce	-339.000	+/-	79.139
La	1.000	+/-	36.380
Ba	1.000	+/-	39.321
Sb	1.000	+/-	21.018
Sn	1.000	+/-	13.305
Cd	13.059	+/-	5.680
Ag	534.334	+/-	14.023
Bal	794945.813	+/-	981.410
Nb	1.000	+/-	2.853
Zr	1.000	+/-	9.693
Y	1.000	+/-	1.980
Sr	284.008	+/-	5.439
Rb	11.348	+/-	4.938
Th	1.000	+/-	144.805
Bi	1.000	+/-	122.706
Au	1264.327	+/-	30.489
As	274.980	+/-	23.218
Se	1.000	+/-	4.468
Pb	1090.609	+/-	20.840
Hg	8.179	+/-	4.402
Zn	52.358	+/-	9.912
Cu	312.785	+/-	18.850
Ni	1.000	+/-	21.293
Co	1.000	+/-	23.828
Fe	1635.347	+/-	67.207
Mn	1.000	+/-	48.903
Cr	29.795	+/-	18.038
V	17.039	+/-	16.080
Ti	180.615	+/-	85.795
Ca	155128.281	+/-	927.981
K	1275.591	+/-	164.633
Al	2633.707	+/-	910.672
P	12572.831	+/-	250.054
Si	14848.328	+/-	615.753
Cl	1663.543	+/-	45.048
S	11223.106	+/-	133.227
Mg	1.000	+/-	13675.087

mRFA -Ergebnisse

XL3t-69288

Reading No 31
Mode Mining
Time 2017-11-08 15:59
Duration 121.35
Units ppm
Sigma Value 2
Sequence Final
Flags
INV NR Pl.O.157
OBJEKT TAFELGEMAELEN
MATERIAL HOLZ METALL FASSUNG
ANALYSESTELLE P8 LiFrIAS MANTEL ENGEL
MESSAUFBAU STATIV
FILTER m30lo30h30li30
User Login Raquet

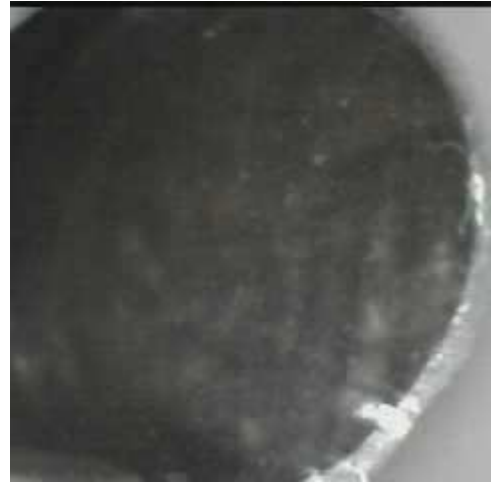


	ppm	+/-	Error
Ce	-339.000	+/-	145.276
La	1.000	+/-	66.218
Ba	1.000	+/-	70.120
Sb	1.000	+/-	21.934
Sn	16227.103	+/-	229.130
Cd	189.970	+/-	14.487
Ag	844.395	+/-	22.843
Bal	829678.750	+/-	1407.146
Nb	1.000	+/-	15.092
Zr	1.000	+/-	49.087
Y	1.000	+/-	12.060
Sr	54.750	+/-	8.443
Rb	1.000	+/-	27.548
Th	1.000	+/-	701.735
Bi	1.000	+/-	589.048
Au	781.383	+/-	63.770
As	2462.995	+/-	118.130
Se	1.000	+/-	12.983
Pb	13174.390	+/-	213.461
Hg	4651.417	+/-	82.755
Zn	279.542	+/-	31.754
Cu	1108.759	+/-	49.032
Ni	1.000	+/-	44.147
Co	1.000	+/-	45.505
Fe	2887.538	+/-	133.792
Mn	1.000	+/-	103.043
Cr	56.072	+/-	20.062
V	1.000	+/-	23.044
Ti	114.910	+/-	98.855
Ca	31316.254	+/-	561.517
K	2480.768	+/-	280.471
Al	10837.084	+/-	1140.779
P	9525.107	+/-	270.119
Si	42450.605	+/-	1050.652
Cl	4439.701	+/-	92.737
S	26438.574	+/-	425.385
Mg	1.000	+/-	8601.202

mRFA -Ergebnisse

XL3t-69288

Reading No 32
Mode Mining
Time 2017-11-08 16:06
Duration 121.15
Units ppm
Sigma Value 2
Sequence Final
Flags
INV NR Pl.O.157
OBJEKT TAFELGEMAELEN
MATERIAL HOLZ METALL FASSUNG
ANALYSESTELLE P9 LiSeFLAS EHRENTUCH
MESSAUFBAU STATIV
FILTER m30lo30h30li30
User Login Raquet

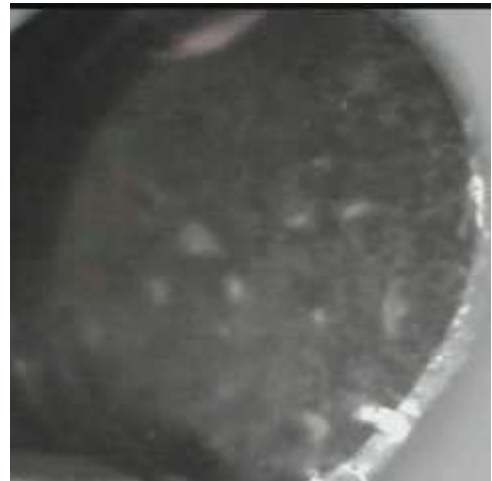


	ppm	+/-	Error
Ce	-339.000	+/-	151.579
La	1.000	+/-	69.025
Ba	1.000	+/-	73.602
Sb	1.000	+/-	22.556
Sn	14984.329	+/-	205.270
Cd	139.726	+/-	13.676
Ag	23.952	+/-	6.727
Bal	812657.688	+/-	1454.631
Nb	1.000	+/-	11.346
Zr	1.000	+/-	42.943
Y	1.000	+/-	10.549
Sr	153.642	+/-	8.749
Rb	1.000	+/-	20.717
Th	1.000	+/-	619.589
Bi	1.000	+/-	501.380
Au	1.000	+/-	43.075
As	1197.997	+/-	100.119
Se	1.000	+/-	11.609
Pb	10783.674	+/-	171.472
Hg	3558.792	+/-	64.881
Zn	243.491	+/-	27.845
Cu	362.053	+/-	30.865
Ni	1.000	+/-	42.289
Co	1.000	+/-	44.960
Fe	2478.553	+/-	123.601
Mn	1.000	+/-	139.408
Cr	55.779	+/-	21.356
V	1.000	+/-	25.035
Ti	255.380	+/-	112.110
Ca	52093.703	+/-	803.124
K	4170.062	+/-	322.700
Al	13934.002	+/-	1390.383
P	2835.246	+/-	184.085
Si	57123.293	+/-	1232.685
Cl	3545.505	+/-	78.438
S	19403.047	+/-	305.775
Mg	1.000	+/-	15118.146

mRFA -Ergebnisse

XL3t-69288

Reading No 33
Mode Mining
Time 2017-11-08 16:13
Duration 121.33
Units ppm
Sigma Value 2
Sequence Final
Flags
INV NR Pl.O.157
OBJEKT TAFELGEMAEDELDE
MATERIAL HOLZ METALL FASSUNG
ANALYSESTELLE P10 LiFLIS ENGEL OBEN FLUEGEL I
MESSAUFBAU STATIV
FILTER m30lo30h30li30
User Login Raquet



	ppm	+/-	Error
Ce	-339.000	+/-	62.459
La	1.000	+/-	28.591
Ba	1.000	+/-	30.739
Sb	15.769	+/-	11.490
Sn	1.000	+/-	7.095
Cd	14.878	+/-	4.624
Ag	547.366	+/-	12.195
Bal	836851.250	+/-	782.688
Nb	9.063	+/-	3.829
Zr	1.000	+/-	13.083
Y	1.000	+/-	2.751
Sr	135.727	+/-	3.560
Rb	9.047	+/-	5.934
Th	1.000	+/-	196.134
Bi	1.000	+/-	172.026
Au	1.000	+/-	6.206
As	724.556	+/-	33.999
Se	1.000	+/-	3.963
Pb	2568.716	+/-	33.449
Hg	1.000	+/-	2.904
Zn	71.010	+/-	7.948
Cu	289.554	+/-	17.126
Ni	1.000	+/-	18.881
Co	1.000	+/-	24.889
Fe	2570.350	+/-	77.701
Mn	1.000	+/-	44.364
Cr	24.236	+/-	15.000
V	1.000	+/-	22.833
Ti	223.228	+/-	77.288
Ca	103878.000	+/-	722.755
K	2855.203	+/-	174.753
Al	6175.402	+/-	804.268
P	1.000	+/-	103.799
Si	29260.859	+/-	670.415
Cl	1469.807	+/-	37.054
S	12305.996	+/-	132.184
Mg	1.000	+/-	9424.276

mRFA -Ergebnisse

XL3t-69288

Reading No 34
Mode Mining
Time 2017-11-08 16:20
Duration 120.99
Units ppm
Sigma Value 2
Sequence Final
Flags
INV NR Pl.O.157
OBJEKT TAFELGEMAELEN
MATERIAL HOLZ METALL FASSUNG
ANALYSESTELLE P11 LiFLIS ENGEL OBEN FLUEGEL
MESSAUFBAU STATIV
FILTER m30lo30h30li30
User Login Raquet



	ppm	+/-	Error
Ce	-339.000	+/-	70.860
La	1.000	+/-	32.502
Ba	1.000	+/-	34.926
Sb	1.000	+/-	19.180
Sn	1.000	+/-	8.433
Cd	14.779	+/-	5.208
Ag	668.150	+/-	14.768
Bal	846281.938	+/-	790.715
Nb	8.880	+/-	4.656
Zr	1.000	+/-	16.761
Y	1.000	+/-	3.601
Sr	158.161	+/-	4.172
Rb	10.705	+/-	7.561
Th	1.000	+/-	243.068
Bi	1.000	+/-	237.393
Au	674.605	+/-	23.695
As	868.203	+/-	41.815
Se	1.000	+/-	5.470
Pb	3521.288	+/-	44.974
Hg	1.000	+/-	4.455
Zn	1.000	+/-	13.825
Cu	4790.931	+/-	72.446
Ni	1.000	+/-	21.228
Co	1.000	+/-	27.303
Fe	2631.026	+/-	82.650
Mn	1.000	+/-	49.187
Cr	20.674	+/-	16.276
V	1.000	+/-	19.719
Ti	225.580	+/-	81.724
Ca	89951.102	+/-	704.911
K	3597.469	+/-	166.848
Al	5462.766	+/-	732.978
P	2590.876	+/-	126.937
Si	25741.240	+/-	621.103
Cl	981.605	+/-	31.519
S	11799.959	+/-	132.322
Mg	1.000	+/-	7589.629

mRFA -Ergebnisse

XL3t-69288

Reading No 35
Mode Mining
Time 2017-11-08 16:23
Duration 120.32
Units ppm
Sigma Value 2
Sequence Final
Flags
INV NR Pl.O.157
OBJEKT TAFELGEMAELEN
MATERIAL HOLZ METALL FASSUNG
ANALYSESTELLE P12 LiFLIS ENGEL OBEN GEWAND
MESSAUFBAU STATIV
FILTER m30lo30h30li30
User Login Raquet

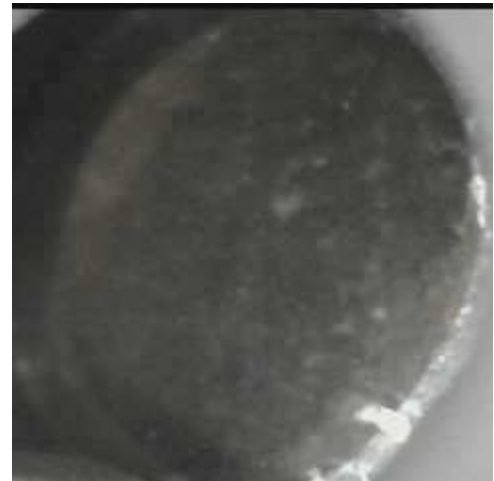


	ppm	+/-	Error
Ce	-339.000	+/-	62.700
La	1.000	+/-	28.584
Ba	1.000	+/-	30.857
Sb	1.000	+/-	12.347
Sn	20.286	+/-	8.717
Cd	15.236	+/-	4.668
Ag	701.761	+/-	13.960
Bal	858529.063	+/-	724.514
Nb	10.130	+/-	4.879
Zr	1.000	+/-	17.187
Y	1.000	+/-	3.745
Sr	95.900	+/-	3.252
Rb	16.800	+/-	7.984
Th	1.000	+/-	255.639
Bi	1.000	+/-	199.237
Au	786.306	+/-	25.019
As	1109.448	+/-	44.413
Se	1.000	+/-	5.667
Pb	4046.814	+/-	48.686
Hg	1.000	+/-	4.132
Zn	11.271	+/-	9.386
Cu	3546.361	+/-	58.834
Ni	1.000	+/-	20.587
Co	1.000	+/-	28.212
Fe	3337.820	+/-	90.633
Mn	1.000	+/-	45.320
Cr	26.872	+/-	15.690
V	16.640	+/-	14.021
Ti	206.379	+/-	77.075
Ca	77379.422	+/-	629.378
K	2959.702	+/-	176.062
Al	5159.869	+/-	717.028
P	6809.574	+/-	169.334
Si	22169.426	+/-	593.986
Cl	1295.754	+/-	35.026
S	11749.147	+/-	133.056
Mg	1.000	+/-	6334.256

mRFA -Ergebnisse

XL3t-69288

Reading No 36
Mode Mining
Time 2017-11-08 16:27
Duration 121.13
Units ppm
Sigma Value 2
Sequence Final
Flags
INV NR Pl.O.157
OBJEKT TAFELGEMAELEN
MATERIAL HOLZ METALL FASSUNG
ANALYSESTELLE P13 LiFLIS ENGEL OBEN GEWAND
MESSAUFBAU STATIV
FILTER m30lo30h30li30
User Login Raquet

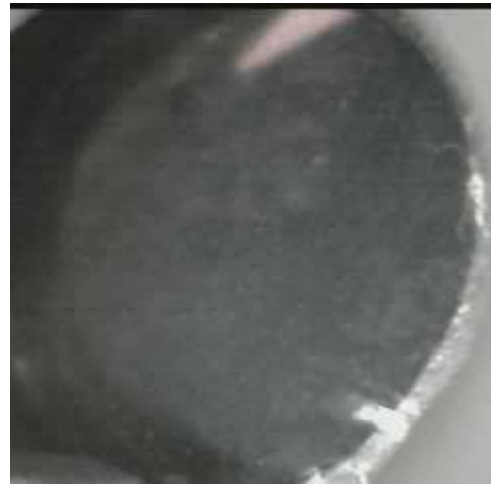


	ppm	+/-	Error
Ce	-339.000	+/-	66.374
La	1.000	+/-	30.488
Ba	1.000	+/-	32.921
Sb	1.000	+/-	14.049
Sn	1.000	+/-	8.008
Cd	9.960	+/-	4.770
Ag	640.222	+/-	13.973
Bal	870508.750	+/-	691.692
Nb	9.618	+/-	5.084
Zr	1.000	+/-	17.964
Y	1.000	+/-	3.895
Sr	85.823	+/-	3.242
Rb	16.005	+/-	8.279
Th	1.000	+/-	266.492
Bi	1.000	+/-	223.680
Au	572.920	+/-	22.762
As	1052.828	+/-	45.537
Se	1.000	+/-	5.797
Pb	3902.740	+/-	49.581
Hg	1.000	+/-	4.354
Zn	1.000	+/-	13.604
Cu	17259.170	+/-	179.747
Ni	1.000	+/-	21.831
Co	1.000	+/-	26.333
Fe	2860.394	+/-	83.373
Mn	1.000	+/-	44.826
Cr	1.000	+/-	21.480
V	1.000	+/-	23.197
Ti	210.430	+/-	78.198
Ca	60157.957	+/-	512.365
K	4248.748	+/-	171.970
Al	4738.189	+/-	646.757
P	990.841	+/-	92.763
Si	25255.533	+/-	601.054
Cl	1292.319	+/-	32.990
S	6187.609	+/-	86.544
Mg	1.000	+/-	4610.387

mRFA -Ergebnisse

XL3t-69288

Reading No 37
Mode Mining
Time 2017-11-08 16:31
Duration 120.45
Units ppm
Sigma Value 2
Sequence Final
Flags
INV NR Pl.O.157
OBJEKT TAFELGEMAELEN
MATERIAL HOLZ METALL FASSUNG
ANALYSESTELLE P14 LiFLIS UEBERMALUNG
MESSAUFBAU STATIV
FILTER m30lo30h30li30
User Login Raquet



	ppm	+/-	Error
Ce	-339.000	+/-	100.398
La	1.000	+/-	45.994
Ba	1.000	+/-	54.696
Sb	84.958	+/-	18.593
Sn	17.674	+/-	9.205
Cd	13.647	+/-	6.704
Ag	8.693	+/-	4.486
Bal	719734.563	+/-	1879.374
Nb	1.000	+/-	27.480
Zr	1.000	+/-	60.701
Y	1.000	+/-	13.743
Sr	137.450	+/-	6.180
Rb	38.600	+/-	28.957
Th	1.000	+/-	865.485
Bi	1.000	+/-	1009.029
Au	1.000	+/-	22.397
As	6829.292	+/-	171.720
Se	1.000	+/-	14.878
Pb	20940.949	+/-	340.114
Hg	1.000	+/-	14.229
Zn	115.774	+/-	21.273
Cu	20321.592	+/-	358.449
Ni	459.409	+/-	45.694
Co	2543.357	+/-	97.426
Fe	7091.257	+/-	181.338
Mn	90.689	+/-	67.434
Cr	51.606	+/-	23.066
V	1.000	+/-	57.067
Ti	610.460	+/-	227.843
Ca	9778.357	+/-	223.986
K	13751.199	+/-	357.981
Al	57132.383	+/-	2062.501
P	613.435	+/-	121.843
Si	107239.313	+/-	1783.196
Cl	996.790	+/-	32.133
S	24978.225	+/-	412.976
Mg	6420.405	+/-	6358.618

mRFA -Ergebnisse

XL3t-69288

Reading No 38
Mode Mining
Time 2017-11-08 16:34
Duration 120.74
Units ppm
Sigma Value 2
Sequence Final
Flags
INV NR Pl.O.157
OBJEKT TAFELGEMAELEN
MATERIAL HOLZ METALL FASSUNG
ANALYSESTELLE P15 LiFLIS HINTERGRUND
MESSAUFBAU STATIV
FILTER m30lo30h30li30
User Login Raquet

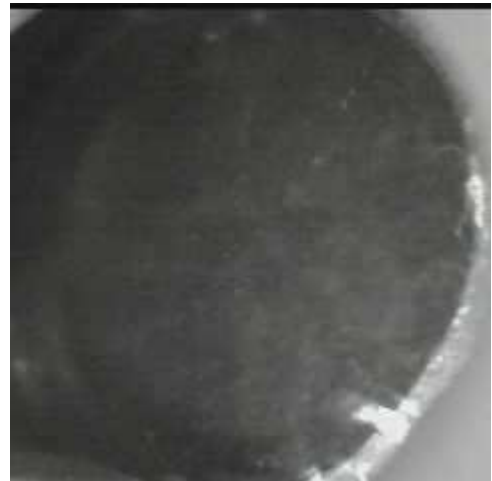


	ppm	+/-	Error
Ce	-339.000	+/-	73.701
La	1.000	+/-	33.902
Ba	1.000	+/-	36.584
Sb	41.149	+/-	13.889
Sn	1.000	+/-	10.448
Cd	9.085	+/-	5.174
Ag	6.998	+/-	3.507
Bal	822408.813	+/-	922.640
Nb	1.000	+/-	5.603
Zr	1.000	+/-	14.730
Y	1.000	+/-	3.185
Sr	159.765	+/-	4.421
Rb	8.150	+/-	6.646
Th	1.000	+/-	219.179
Bi	1.000	+/-	196.207
Au	1.000	+/-	6.807
As	652.301	+/-	35.813
Se	1.000	+/-	4.460
Pb	2152.768	+/-	34.011
Hg	1.000	+/-	3.678
Zn	1.000	+/-	17.659
Cu	36051.168	+/-	304.542
Ni	1.000	+/-	22.263
Co	1.000	+/-	32.462
Fe	1521.456	+/-	62.171
Mn	1.000	+/-	45.604
Cr	1.000	+/-	17.709
V	1.000	+/-	22.582
Ti	143.086	+/-	118.314
Ca	96879.461	+/-	676.872
K	1561.468	+/-	130.117
Al	3713.692	+/-	724.365
P	129.199	+/-	106.010
Si	18072.883	+/-	524.776
Cl	422.072	+/-	24.028
S	16066.555	+/-	152.181
Mg	1.000	+/-	6738.251

mRFA -Ergebnisse

XL3t-69288

Reading No 39
Mode Mining
Time 2017-11-08 16:43
Duration 120.49
Units ppm
Sigma Value 2
Sequence Final
Flags
INV NR Pl.O.157
OBJEKT TAFELGEMAELEN
MATERIAL HOLZ METALL FASSUNG
ANALYSESTELLE P16 LiFLIS STERN
MESSAUFBAU STATIV
FILTER m30lo30h30li30
User Login Raquet



	ppm	+/-	Error
Ce	-339.000	+/-	82.197
La	1.000	+/-	37.682
Ba	1.000	+/-	40.429
Sb	56.141	+/-	15.350
Sn	1.000	+/-	8.874
Cd	12.744	+/-	5.730
Ag	499.493	+/-	13.901
Bal	814991.000	+/-	1100.739
Nb	14.031	+/-	10.554
Zr	1.000	+/-	38.173
Y	1.000	+/-	8.405
Sr	94.124	+/-	4.296
Rb	23.020	+/-	17.772
Th	1.000	+/-	553.633
Bi	1.000	+/-	609.598
Au	780.607	+/-	34.457
As	4054.168	+/-	102.736
Se	1.000	+/-	10.252
Pb	11237.891	+/-	158.964
Hg	1.000	+/-	9.580
Zn	42.698	+/-	16.769
Cu	14586.910	+/-	226.384
Ni	131.880	+/-	34.242
Co	1295.876	+/-	68.255
Fe	6097.741	+/-	148.590
Mn	1.000	+/-	52.940
Cr	23.826	+/-	17.014
V	1.000	+/-	23.799
Ti	197.637	+/-	86.165
Ca	28641.359	+/-	403.781
K	8562.892	+/-	244.348
Al	7144.873	+/-	800.595
P	3573.137	+/-	153.649
Si	76432.047	+/-	1261.048
Cl	1840.620	+/-	43.264
S	19665.314	+/-	275.844
Mg	1.000	+/-	7468.529

mRFA -Ergebnisse

XL3t-69288

Reading No 40
Mode Mining
Time 2017-11-08 16:50
Duration 120.74
Units ppm
Sigma Value 2
Sequence Final
Flags
INV NR Pl.O.157
OBJEKT TAFELGEMAELEN
MATERIAL HOLZ METALL FASSUNG
ANALYSESTELLE P17 LiFLIS STRAHL
MESSAUFBAU STATIV
FILTER m30lo30h30li30
User Login Raquet



	ppm	+/-	Error
Ce	-339.000	+/-	72.944
La	1.000	+/-	33.481
Ba	1.000	+/-	36.233
Sb	1.000	+/-	14.219
Sn	14.042	+/-	7.034
Cd	13.886	+/-	5.245
Ag	10.545	+/-	3.601
Bal	761807.188	+/-	1111.110
Nb	1.000	+/-	1.919
Zr	1.000	+/-	7.310
Y	1.000	+/-	2.042
Sr	225.710	+/-	4.711
Rb	14.451	+/-	4.556
Th	1.000	+/-	109.765
Bi	1.000	+/-	91.642
Au	2569.861	+/-	43.006
As	66.462	+/-	14.202
Se	1.000	+/-	5.201
Pb	421.210	+/-	12.516
Hg	7.284	+/-	4.459
Zn	72.402	+/-	11.603
Cu	108.367	+/-	13.672
Ni	1.000	+/-	20.392
Co	1.000	+/-	32.677
Fe	4989.768	+/-	107.373
Mn	1.000	+/-	49.880
Cr	67.234	+/-	18.513
V	1.000	+/-	28.482
Ti	652.224	+/-	104.677
Ca	142597.547	+/-	825.506
K	2618.354	+/-	147.381
Al	15991.919	+/-	1349.205
P	20459.385	+/-	286.874
Si	34033.133	+/-	784.891
Cl	669.222	+/-	29.794
S	12589.915	+/-	132.004
Mg	1.000	+/-	13782.844

mRFA -Ergebnisse

XL3t-69288

Reading No 41
Mode Mining
Time 2017-11-08 16:56
Duration 121.56
Units ppm
Sigma Value 2
Sequence Final
Flags
INV NR Pl.O.157
OBJEKT TAFELGEMAELEN
MATERIAL HOLZ METALL FASSUNG
ANALYSESTELLE P18 LiFLIS ENGEL UNTEN GEWAND
MESSAUFBAU STATIV
FILTER m30lo30h30li30
User Login Raquet

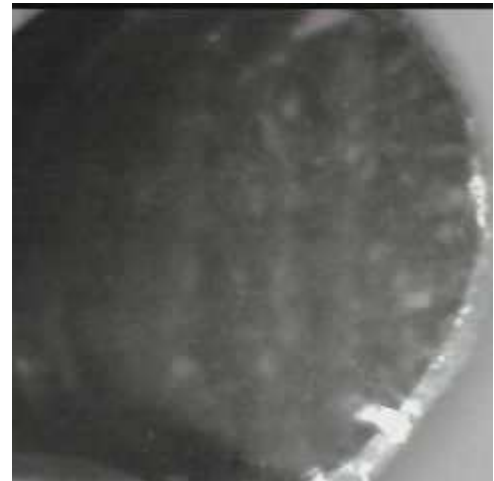


	ppm	+/-	Error
Ce	-339.000	+/-	61.847
La	1.000	+/-	28.280
Ba	1.000	+/-	30.656
Sb	1.000	+/-	15.563
Sn	1.000	+/-	6.899
Cd	17.228	+/-	4.687
Ag	438.587	+/-	11.024
Bal	838306.813	+/-	769.933
Nb	14.557	+/-	4.172
Zr	1.000	+/-	17.626
Y	1.000	+/-	3.067
Sr	87.008	+/-	2.916
Rb	9.923	+/-	6.676
Th	1.000	+/-	214.931
Bi	1.000	+/-	208.305
Au	641.809	+/-	21.420
As	914.276	+/-	37.589
Se	1.000	+/-	4.814
Pb	3188.722	+/-	38.845
Hg	1.000	+/-	3.646
Zn	57.033	+/-	8.355
Cu	206.893	+/-	15.295
Ni	1.000	+/-	18.784
Co	1.000	+/-	24.141
Fe	2461.671	+/-	75.808
Mn	1.000	+/-	45.860
Cr	20.090	+/-	16.186
V	1.000	+/-	14.462
Ti	197.649	+/-	79.665
Ca	95738.250	+/-	706.253
K	2647.075	+/-	158.385
Al	5151.153	+/-	754.716
P	4119.338	+/-	149.749
Si	32562.998	+/-	713.298
Cl	1072.084	+/-	33.139
S	12146.781	+/-	134.080
Mg	1.000	+/-	6272.068

mRFA -Ergebnisse

XL3t-69288

Reading No 42
Mode Mining
Time 2017-11-08 17:00
Duration 122.17
Units ppm
Sigma Value 2
Sequence Final
Flags
INV NR Pl.O.157
OBJEKT TAFELGEMAELEN
MATERIAL HOLZ METALL FASSUNG
ANALYSESTELLE P19 LiFLIS PORTATIV
MESSAUFBAU STATIV
FILTER m30lo30h30li30
User Login Raquet

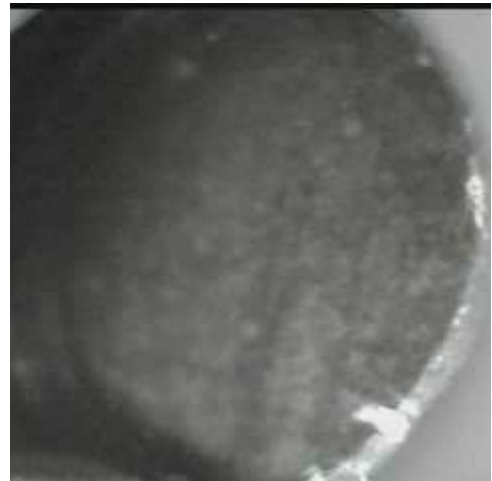


	ppm	+/-	Error
Ce	-339.000	+/-	61.844
La	1.000	+/-	28.344
Ba	1.000	+/-	30.729
Sb	16.116	+/-	11.463
Sn	1.000	+/-	6.550
Cd	20.140	+/-	4.758
Ag	373.212	+/-	10.254
Bal	818786.875	+/-	867.963
Nb	11.698	+/-	4.278
Zr	1.000	+/-	15.511
Y	1.000	+/-	3.186
Sr	88.258	+/-	2.929
Rb	9.598	+/-	6.720
Th	1.000	+/-	222.354
Bi	1.000	+/-	185.864
Au	1.000	+/-	6.567
As	1010.422	+/-	38.999
Se	1.000	+/-	4.426
Pb	3358.191	+/-	40.200
Hg	1.000	+/-	3.127
Zn	24.082	+/-	5.983
Cu	44.510	+/-	11.238
Ni	1.000	+/-	18.808
Co	1.000	+/-	22.059
Fe	1970.700	+/-	68.966
Mn	1.000	+/-	44.057
Cr	1.000	+/-	23.496
V	1.000	+/-	20.109
Ti	167.776	+/-	73.887
Ca	111290.797	+/-	781.194
K	2329.036	+/-	158.530
Al	5228.338	+/-	805.495
P	334.337	+/-	111.890
Si	25940.512	+/-	644.528
Cl	1167.652	+/-	34.092
S	13947.639	+/-	145.840
Mg	13880.087	+/-	7524.046

mRFA -Ergebnisse

XL3t-69288

Reading No 43
Mode Mining
Time 2017-11-08 17:05
Duration 120.37
Units ppm
Sigma Value 2
Sequence Final
Flags
INV NR Pl.O.157
OBJEKT TAFELGEMAELEN
MATERIAL HOLZ METALL FASSUNG
ANALYSESTELLE P20 LiFLIS FLUEGEL INNENSEITE
MESSAUFBAU STATIV
FILTER m30lo30h30li30
User Login Raquet



	ppm	+/-	Error
Ce	-339.000	+/-	58.740
La	1.000	+/-	27.015
Ba	1.000	+/-	29.228
Sb	15.380	+/-	10.964
Sn	1.000	+/-	11.828
Cd	17.240	+/-	4.482
Ag	540.149	+/-	11.760
Bal	835779.625	+/-	786.185
Nb	11.697	+/-	4.302
Zr	1.000	+/-	15.609
Y	1.000	+/-	3.160
Sr	85.577	+/-	2.888
Rb	11.123	+/-	6.785
Th	1.000	+/-	224.052
Bi	1.000	+/-	188.507
Au	1.000	+/-	6.449
As	994.483	+/-	39.045
Se	1.000	+/-	4.464
Pb	3402.125	+/-	40.646
Hg	1.000	+/-	3.208
Zn	18.043	+/-	5.953
Cu	332.341	+/-	17.826
Ni	1.000	+/-	19.197
Co	1.000	+/-	25.944
Fe	3225.090	+/-	85.832
Mn	1.000	+/-	43.477
Cr	38.751	+/-	15.901
V	1.000	+/-	18.143
Ti	248.665	+/-	82.034
Ca	92956.602	+/-	694.222
K	3371.624	+/-	190.643
Al	8043.183	+/-	872.735
P	543.141	+/-	112.776
Si	37180.082	+/-	777.091
Cl	1616.672	+/-	39.866
S	11568.389	+/-	132.904
Mg	1.000	+/-	6917.812

mRFA -Ergebnisse

XL3t-69288

Reading No 44
Mode Mining
Time 2017-11-08 17:08
Duration 120.49
Units ppm
Sigma Value 2
Sequence Final
Flags
INV NR Pl.O.157
OBJEKT TAFELGEMAELEN
MATERIAL HOLZ METALL FASSUNG
ANALYSESTELLE P21 LiFLIS FLUEGEL AS
MESSAUFBAU STATIV
FILTER m30lo30h30li30
User Login Raquet



	ppm	+/-	Error
Ce	-339.000	+/-	59.007
La	1.000	+/-	27.112
Ba	1.000	+/-	29.270
Sb	1.000	+/-	10.065
Sn	278.079	+/-	11.296
Cd	19.270	+/-	4.598
Ag	496.688	+/-	11.208
Bal	829792.938	+/-	792.623
Nb	10.067	+/-	3.423
Zr	1.000	+/-	12.906
Y	1.000	+/-	2.351
Sr	92.841	+/-	2.912
Rb	12.019	+/-	5.395
Th	1.000	+/-	170.378
Bi	1.000	+/-	147.182
Au	723.720	+/-	21.796
As	577.767	+/-	28.801
Se	1.000	+/-	4.165
Pb	1899.032	+/-	26.841
Hg	1.000	+/-	3.100
Zn	29.136	+/-	7.778
Cu	554.502	+/-	21.400
Ni	1.000	+/-	18.680
Co	1.000	+/-	21.931
Fe	1993.751	+/-	67.766
Mn	1.000	+/-	43.983
Cr	22.395	+/-	16.075
V	1.000	+/-	21.259
Ti	215.859	+/-	83.896
Ca	110021.680	+/-	719.911
K	2398.862	+/-	166.114
Al	6278.849	+/-	827.899
P	6863.972	+/-	177.556
Si	26215.527	+/-	667.123
Cl	959.296	+/-	32.972
S	10543.715	+/-	119.723
Mg	1.000	+/-	6899.282

mRFA -Ergebnisse

XL3t-69288

Reading No 45
Mode Mining
Time 2017-11-08 17:14
Duration 122.24
Units ppm
Sigma Value 2
Sequence Final
Flags
INV NR Pl.O.157
OBJEKT TAFELGEMAELEN
MATERIAL HOLZ METALL FASSUNG
ANALYSESTELLE P22 ReFrAS KLEID ELISABETH
MESSAUFBAU STATIV
FILTER m30lo30h30li30
User Login Raquet

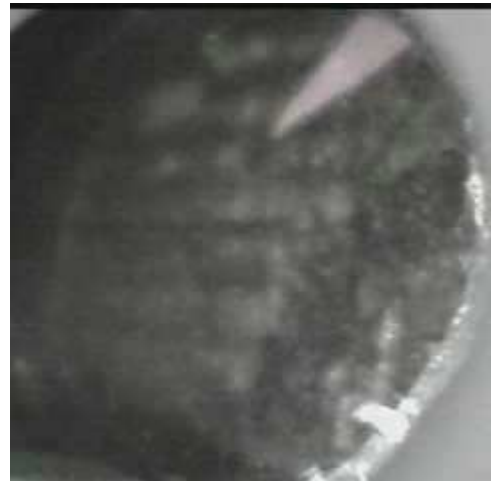


	ppm	+/-	Error
Ce	-339.000	+/-	118.649
La	1.000	+/-	54.425
Ba	1.000	+/-	58.147
Sb	1.000	+/-	18.289
Sn	13847.063	+/-	159.637
Cd	184.919	+/-	12.512
Ag	309.488	+/-	12.165
Bal	850810.563	+/-	1023.968
Nb	1.000	+/-	4.314
Zr	1.000	+/-	17.035
Y	1.000	+/-	3.670
Sr	163.051	+/-	5.373
Rb	1.000	+/-	11.277
Th	1.000	+/-	260.421
Bi	1.000	+/-	195.101
Au	616.681	+/-	28.690
As	557.828	+/-	41.046
Se	1.000	+/-	6.409
Pb	1985.566	+/-	38.765
Hg	1.000	+/-	4.761
Zn	45.472	+/-	12.079
Cu	312.757	+/-	25.786
Ni	1.000	+/-	36.536
Co	1.000	+/-	32.707
Fe	1648.709	+/-	91.163
Mn	1.000	+/-	73.407
Cr	66.458	+/-	17.061
V	1.000	+/-	16.069
Ti	90.235	+/-	83.125
Ca	80007.328	+/-	797.099
K	1049.160	+/-	281.534
Al	5058.500	+/-	987.401
P	6257.556	+/-	209.821
Si	21782.354	+/-	719.375
Cl	554.184	+/-	40.435
S	14652.206	+/-	185.979
Mg	1.000	+/-	13429.829

mRFA -Ergebnisse

XL3t-69288

Reading No 46
Mode Mining
Time 2017-11-08 17:19
Duration 121.36
Units ppm
Sigma Value 2
Sequence Final
Flags
INV NR Pl.O.157
OBJEKT TAFELGEMAELEN
MATERIAL HOLZ METALL FASSUNG
ANALYSESTELLE P23 ReFrAS EHRENTUCH ELISABETH
MESSAUFBAU STATIV
FILTER m30lo30h30li30
User Login Raquet



	ppm	+/-	Error
Ce	-339.000	+/-	155.486
La	1.000	+/-	70.623
Ba	1.000	+/-	75.607
Sb	1.000	+/-	23.067
Sn	16727.795	+/-	232.440
Cd	127.290	+/-	13.864
Ag	570.018	+/-	18.918
Bal	855097.438	+/-	1190.742
Nb	1.000	+/-	22.522
Zr	1.000	+/-	56.012
Y	1.000	+/-	13.704
Sr	133.084	+/-	6.679
Rb	1.000	+/-	33.774
Th	1.000	+/-	800.413
Bi	1.000	+/-	666.455
Au	709.730	+/-	39.600
As	594.511	+/-	123.604
Se	1.000	+/-	13.660
Pb	17981.730	+/-	289.520
Hg	1.000	+/-	11.485
Zn	53.303	+/-	15.801
Cu	2358.250	+/-	73.925
Ni	1.000	+/-	42.007
Co	1.000	+/-	45.574
Fe	3359.260	+/-	141.670
Mn	1.000	+/-	80.511
Cr	98.793	+/-	19.995
V	1.000	+/-	19.483
Ti	1.000	+/-	132.130
Ca	38898.250	+/-	716.232
K	2151.133	+/-	327.683
Al	5027.968	+/-	948.037
P	7396.646	+/-	238.044
Si	27882.555	+/-	860.884
Cl	4672.716	+/-	100.860
S	16159.495	+/-	293.632
Mg	1.000	+/-	8937.779

mRFA -Ergebnisse

XL3t-69288

Reading No 47
Mode Mining
Time 2017-11-08 17:22
Duration 120.17
Units ppm
Sigma Value 2
Sequence Final
Flags
INV NR Pl.O.157
OBJEKT TAFELGEMAELEN
MATERIAL HOLZ METALL FASSUNG
ANALYSESTELLE P24 LiFrAS EHRENTUCH MARIA
MESSAUFBAU STATIV
FILTER m30lo30h30li30
User Login Raquet



	ppm	+/-	Error
Ce	-339.000	+/-	200.295
La	1.000	+/-	91.455
Ba	1.000	+/-	97.147
Sb	1.000	+/-	30.447
Sn	15243.944	+/-	285.399
Cd	163.567	+/-	18.486
Ag	32.062	+/-	9.271
Bal	765491.125	+/-	2394.001
Nb	1.000	+/-	24.046
Zr	1.000	+/-	84.666
Y	1.000	+/-	22.090
Sr	1.000	+/-	17.210
Rb	1.000	+/-	41.493
Th	1.000	+/-	1357.933
Bi	1.000	+/-	917.963
Au	1.000	+/-	111.385
As	8120.039	+/-	235.293
Se	26.345	+/-	17.592
Pb	24075.063	+/-	474.070
Hg	17244.363	+/-	315.396
Zn	751.745	+/-	60.903
Cu	162.048	+/-	31.330
Ni	1.000	+/-	68.345
Co	46.358	+/-	45.532
Fe	598.502	+/-	96.178
Mn	219.106	+/-	108.447
Cr	1.000	+/-	35.465
V	1.000	+/-	34.791
Ti	1.000	+/-	163.302
Ca	52588.828	+/-	946.883
K	2421.960	+/-	215.043
Al	10597.009	+/-	1307.309
P	11156.420	+/-	322.579
Si	36246.805	+/-	1034.994
Cl	2462.529	+/-	69.880
S	38091.789	+/-	691.267
Mg	14260.460	+/-	11211.314

mRFA -Ergebnisse

XL3t-69288

Reading No 48
Mode Mining
Time 2017-11-08 17:27
Duration 120.43
Units ppm
Sigma Value 2
Sequence Final
Flags
INV NR Pl.O.157
OBJEKT TAFELGEMAELEN
MATERIAL HOLZ METALL FASSUNG
ANALYSESTELLE P25 LiFrAS GEWAND MARIA
MESSAUFBAU STATIV
FILTER m30lo30h30li30
User Login Raquet



	ppm	+/-	Error
Ce	-339.000	+/-	107.765
La	1.000	+/-	49.341
Ba	1.000	+/-	52.681
Sb	1.000	+/-	16.650
Sn	11931.848	+/-	132.117
Cd	157.538	+/-	11.046
Ag	263.131	+/-	10.590
Bal	850326.250	+/-	984.311
Nb	1.000	+/-	3.289
Zr	1.000	+/-	12.805
Y	1.000	+/-	2.680
Sr	193.394	+/-	5.554
Rb	1.000	+/-	8.592
Th	1.000	+/-	193.220
Bi	1.000	+/-	147.054
Au	455.534	+/-	23.757
As	282.378	+/-	28.976
Se	1.000	+/-	5.112
Pb	1061.024	+/-	25.709
Hg	20.574	+/-	5.420
Zn	31.069	+/-	10.775
Cu	207.425	+/-	21.965
Ni	1.000	+/-	34.056
Co	1.000	+/-	30.175
Fe	1653.214	+/-	87.254
Mn	1.000	+/-	71.318
Cr	56.775	+/-	18.363
V	1.000	+/-	21.866
Ti	145.441	+/-	87.576
Ca	81623.641	+/-	764.434
K	965.108	+/-	306.807
Al	6221.117	+/-	1092.626
P	4950.137	+/-	207.444
Si	27372.574	+/-	853.570
Cl	1901.035	+/-	57.639
S	10180.856	+/-	148.979
Mg	1.000	+/-	8958.245

mRFA -Ergebnisse

XL3t-69288

Reading No 49
Mode Mining
Time 2017-11-08 17:31
Duration 120.63
Units ppm
Sigma Value 2
Sequence Final
Flags
INV NR Pl.O.157
OBJEKT TAFELGEMAELEN
MATERIAL HOLZ METALL FASSUNG
ANALYSESTELLE P26 LiSeAS ZANGE APOLONIA
MESSAUFBAU STATIV
FILTER m30lo30h30li30
User Login Raquet



	ppm	+/-	Error
Ce	-339.000	+/-	59.466
La	1.000	+/-	27.173
Ba	1.000	+/-	29.413
Sb	1.000	+/-	16.408
Sn	10.511	+/-	6.876
Cd	19.064	+/-	4.534
Ag	291.007	+/-	8.584
Bal	857441.500	+/-	679.414
Nb	9.997	+/-	4.003
Zr	1.000	+/-	14.806
Y	1.000	+/-	2.896
Sr	109.618	+/-	3.191
Rb	1.000	+/-	7.684
Th	1.000	+/-	207.135
Bi	1.000	+/-	194.178
Au	1.000	+/-	5.716
As	845.679	+/-	36.014
Se	1.000	+/-	4.107
Pb	2928.159	+/-	36.392
Hg	1.000	+/-	2.841
Zn	6.126	+/-	5.470
Cu	403.230	+/-	19.052
Ni	1.000	+/-	18.631
Co	1.000	+/-	20.496
Fe	1612.760	+/-	62.895
Mn	1.000	+/-	42.492
Cr	1.000	+/-	20.163
V	1.000	+/-	13.213
Ti	113.386	+/-	64.123
Ca	104013.461	+/-	735.430
K	1304.365	+/-	138.884
Al	2554.532	+/-	680.817
P	160.075	+/-	104.923
Si	14823.305	+/-	521.270
Cl	1831.225	+/-	41.227
S	11522.013	+/-	132.443
Mg	1.000	+/-	11512.890

mRFA -Ergebnisse

XL3t-69288

Reading No 50
Mode Mining
Time 2017-11-08 17:35
Duration 121.23
Units ppm
Sigma Value 2
Sequence Final
Flags
INV NR Pl.O.157
OBJEKT TAFELGEMAELEN
MATERIAL HOLZ METALL FASSUNG
ANALYSESTELLE P27 LiSeAS EHRENTUCH APOLONIA
MESSAUFBAU STATIV
FILTER m30lo30h30li30
User Login Raquet



	ppm	+/-	Error
Ce	-339.000	+/-	136.629
La	1.000	+/-	62.537
Ba	1.000	+/-	66.835
Sb	1.000	+/-	20.491
Sn	15388.619	+/-	206.538
Cd	160.139	+/-	13.418
Ag	27.352	+/-	6.402
Bal	886981.438	+/-	933.925
Nb	1.000	+/-	11.060
Zr	1.000	+/-	38.616
Y	1.000	+/-	9.428
Sr	29.719	+/-	8.013
Rb	1.000	+/-	17.242
Th	1.000	+/-	555.019
Bi	1.000	+/-	455.075
Au	1.000	+/-	51.344
As	1740.790	+/-	92.715
Se	1.000	+/-	14.028
Pb	8625.088	+/-	137.162
Hg	5576.001	+/-	88.690
Zn	261.090	+/-	31.252
Cu	207.304	+/-	25.879
Ni	1.000	+/-	42.301
Co	1.000	+/-	34.029
Fe	606.642	+/-	76.032
Mn	1.000	+/-	84.977
Cr	28.670	+/-	19.445
V	1.000	+/-	19.970
Ti	1.000	+/-	86.488
Ca	30606.908	+/-	556.721
K	1465.996	+/-	287.948
Al	4489.316	+/-	841.615
P	3268.943	+/-	176.600
Si	20595.150	+/-	704.381
Cl	1071.864	+/-	44.737
S	18868.969	+/-	297.540
Mg	1.000	+/-	7172.430

mRFA -Ergebnisse

XL3t-69288

Reading No 51
Mode Mining
Time 2017-11-08 17:40
Duration 120.91
Units ppm
Sigma Value 2
Sequence Final
Flags
INV NR Pl.O.157
OBJEKT TAFELGEMAELEN
MATERIAL HOLZ METALL FASSUNG
ANALYSESTELLE P28 LiSeAS SCHWARZLOT
MESSAUFBAU STATIV
FILTER m30lo30h30li30
User Login Raquet



	ppm	+/-	Error
Ce	-339.000	+/-	71.217
La	1.000	+/-	32.666
Ba	1.000	+/-	35.027
Sb	1.000	+/-	11.852
Sn	471.293	+/-	15.223
Cd	21.593	+/-	5.340
Ag	681.551	+/-	14.510
Bal	849052.125	+/-	851.591
Nb	12.289	+/-	7.963
Zr	1.000	+/-	28.631
Y	1.000	+/-	6.333
Sr	135.474	+/-	4.459
Rb	1.000	+/-	19.656
Th	1.000	+/-	422.983
Bi	1.000	+/-	327.054
Au	733.194	+/-	28.769
As	2208.207	+/-	73.782
Se	1.000	+/-	8.079
Pb	9205.529	+/-	110.810
Hg	1.000	+/-	7.232
Zn	44.287	+/-	9.350
Cu	268.983	+/-	19.192
Ni	1.000	+/-	23.604
Co	1.000	+/-	23.589
Fe	1355.133	+/-	68.495
Mn	1.000	+/-	52.597
Cr	23.497	+/-	15.713
V	1.000	+/-	13.536
Ti	1.000	+/-	96.543
Ca	75868.523	+/-	772.674
K	1637.145	+/-	160.782
Al	6864.644	+/-	804.404
P	6079.758	+/-	178.704
Si	22602.289	+/-	622.616
Cl	2594.687	+/-	50.048
S	20139.838	+/-	236.165
Mg	1.000	+/-	8095.554

mRFA -Ergebnisse

XL3t-69288

Reading No 52
Mode Mining
Time 2017-11-08 17:48
Duration 120.75
Units ppm
Sigma Value 2
Sequence Final
Flags
INV NR Pl.O.157
OBJEKT TAFELGEMAELEN
MATERIAL HOLZ METALL FASSUNG
ANALYSESTELLE P28 LiSeAS SCHWARZLOT
MESSAUFBAU STATIV
FILTER m30lo30h30li30
User Login Raquet



	ppm	+/-	Error
Ce	-339.000	+/-	70.664
La	1.000	+/-	32.352
Ba	1.000	+/-	34.813
Sb	1.000	+/-	13.589
Sn	102.172	+/-	11.116
Cd	12.198	+/-	5.104
Ag	802.720	+/-	16.141
Bal	799135.688	+/-	1021.624
Nb	8.282	+/-	5.151
Zr	1.000	+/-	18.322
Y	1.000	+/-	3.989
Sr	196.760	+/-	4.631
Rb	10.616	+/-	8.422
Th	1.000	+/-	272.353
Bi	1.000	+/-	217.320
Au	612.962	+/-	22.894
As	1383.167	+/-	48.324
Se	1.000	+/-	5.823
Pb	4584.161	+/-	53.936
Hg	1.000	+/-	4.220
Zn	37.751	+/-	8.328
Cu	533.601	+/-	22.793
Ni	1.000	+/-	21.213
Co	1.000	+/-	24.861
Fe	2316.276	+/-	78.201
Mn	1.000	+/-	48.749
Cr	26.173	+/-	16.904
V	18.354	+/-	14.329
Ti	144.265	+/-	77.455
Ca	107876.930	+/-	825.488
K	1772.887	+/-	168.905
Al	6519.243	+/-	985.403
P	5149.787	+/-	187.872
Si	26980.857	+/-	735.671
Cl	2072.154	+/-	47.439
S	18962.145	+/-	198.887
Mg	20740.865	+/-	9295.028

mRFA -Ergebnisse

XL3t-69288

Reading No 53
Mode Mining
Time 2017-11-08 17:52
Duration 120.91
Units ppm
Sigma Value 2
Sequence Final
Flags
INV NR Pl.O.157
OBJEKT TAFELGEMAELEN
MATERIAL HOLZ METALL FASSUNG
ANALYSESTELLE P30 ReSeAS EHRENTUCH DOROTHEA
MESSAUFBAU STATIV
FILTER m30lo30h30li30
User Login Raquet



	ppm	+/-	Error
Ce	-339.000	+/-	148.310
La	1.000	+/-	67.248
Ba	1.000	+/-	72.098
Sb	1.000	+/-	22.239
Sn	16694.305	+/-	235.999
Cd	188.447	+/-	14.724
Ag	465.357	+/-	16.811
Bal	802323.938	+/-	1631.896
Nb	1.000	+/-	10.750
Zr	1.000	+/-	40.942
Y	1.000	+/-	9.900
Sr	33.899	+/-	9.772
Rb	1.000	+/-	20.364
Th	1.000	+/-	653.604
Bi	1.000	+/-	459.931
Au	89.476	+/-	67.572
As	2359.448	+/-	101.585
Se	1.000	+/-	11.626
Pb	8343.702	+/-	142.864
Hg	7638.317	+/-	122.673
Zn	349.355	+/-	38.308
Cu	503.830	+/-	36.236
Ni	1.000	+/-	45.822
Co	1.000	+/-	43.293
Fe	1816.224	+/-	113.816
Mn	1.000	+/-	89.675
Cr	1.000	+/-	26.033
V	1.000	+/-	27.986
Ti	139.073	+/-	115.481
Ca	69370.039	+/-	952.397
K	1743.682	+/-	236.718
Al	8337.991	+/-	1078.751
P	7848.101	+/-	236.910
Si	32322.354	+/-	861.466
Cl	2331.849	+/-	57.898
S	26265.629	+/-	378.475
Mg	10835.024	+/-	9487.757

mRFA -Ergebnisse

XL3t-69288

Reading No 54
Mode Mining
Time 2017-11-08 17:56
Duration 121.25
Units ppm
Sigma Value 2
Sequence Final
Flags
INV NR Pl.O.157
OBJEKT TAFELGEMAELEN
MATERIAL HOLZ METALL FASSUNG
ANALYSESTELLE P31 ReSeAS EHRENTUCH DOROTHEA
MESSAUFBAU STATIV
FILTER m30lo30h30li30
User Login Raquet



	ppm	+/-	Error
Ce	-339.000	+/-	163.154
La	1.000	+/-	74.699
Ba	1.000	+/-	79.395
Sb	1.000	+/-	24.109
Sn	18452.496	+/-	259.284
Cd	238.770	+/-	16.265
Ag	384.431	+/-	15.619
Bal	831550.875	+/-	1400.312
Nb	1.000	+/-	10.732
Zr	1.000	+/-	40.973
Y	1.000	+/-	9.847
Sr	1.000	+/-	13.507
Rb	1.000	+/-	18.727
Th	1.000	+/-	651.539
Bi	1.000	+/-	459.073
Au	298.404	+/-	68.056
As	2235.700	+/-	100.489
Se	1.000	+/-	17.229
Pb	8534.353	+/-	144.969
Hg	7334.934	+/-	118.083
Zn	345.455	+/-	37.568
Cu	448.039	+/-	34.434
Ni	1.000	+/-	46.567
Co	1.000	+/-	40.782
Fe	1774.477	+/-	112.232
Mn	1.000	+/-	110.269
Cr	23.163	+/-	19.743
V	1.000	+/-	19.909
Ti	125.304	+/-	92.391
Ca	53389.648	+/-	779.859
K	1400.886	+/-	235.011
Al	6080.183	+/-	986.743
P	7627.442	+/-	238.341
Si	29720.783	+/-	836.386
Cl	2250.792	+/-	57.889
S	27783.859	+/-	410.242
Mg	1.000	+/-	14193.039

mRFA -Ergebnisse

XL3t-69288

Reading No 55
Mode Mining
Time 2017-11-08 18:00
Duration 121.03
Units ppm
Sigma Value 2
Sequence Final
Flags
INV NR Pl.O.157
OBJEKT TAFELGEMAELEN
MATERIAL HOLZ METALL FASSUNG
ANALYSESTELLE P32 ReSeAS EHRENTUCH DOROTHEA
MESSAUFBAU STATIV
FILTER m30lo30h30li30
User Login Raquet



	ppm	+/-	Error
Ce	-339.000	+/-	103.396
La	1.000	+/-	47.191
Ba	1.000	+/-	50.508
Sb	1.000	+/-	16.183
Sn	9390.374	+/-	107.027
Cd	118.118	+/-	9.890
Ag	705.173	+/-	16.808
Bal	824607.188	+/-	1151.840
Nb	1.000	+/-	4.253
Zr	1.000	+/-	17.037
Y	1.000	+/-	3.595
Sr	234.644	+/-	6.196
Rb	1.000	+/-	10.385
Th	1.000	+/-	251.485
Bi	1.000	+/-	195.283
Au	648.138	+/-	28.258
As	663.445	+/-	42.014
Se	1.000	+/-	6.172
Pb	2265.232	+/-	40.280
Hg	1.000	+/-	5.295
Zn	42.719	+/-	11.448
Cu	452.424	+/-	27.546
Ni	1.000	+/-	34.200
Co	1.000	+/-	31.369
Fe	1776.676	+/-	89.049
Mn	1.000	+/-	70.996
Cr	48.728	+/-	17.905
V	1.000	+/-	17.469
Ti	135.625	+/-	93.794
Ca	74647.961	+/-	732.607
K	2101.653	+/-	264.421
Al	7672.457	+/-	1077.990
P	4243.307	+/-	192.005
Si	39230.434	+/-	914.265
Cl	1175.669	+/-	45.064
S	18145.984	+/-	213.844
Mg	11694.045	+/-	9417.178