

mRFA -Ergebnisse

XL3t-69288

Reading No 1
Mode Mining
Time 2019-06-27 10:06
Duration 120.69
Units ppm
Sigma Value 2
Sequence Final
Flags 3mm
INV NR Gm534
OBJEKT GEMAELENDE
MATERIAL TEXTIL FASSUNG
ANALYSESTELLE P1 SCHWARZE RAHMUNG OBEN LINK
MESSAUFBAU STATIV
FILTER m30lo30hi30li30
User Login Raquet



	ppm	+/-	Error
Ce	1.000	+/-	68.204
La	1.000	+/-	56.886
Ba	1.000	+/-	59.799
Sb	1.000	+/-	30.541
Sn	1.000	+/-	19.622
Cd	21.061	+/-	9.496
Ag	1.000	+/-	7.549
Bal	854369.125	+/-	1140.952
Nb	10.219	+/-	3.654
Zr	1.000	+/-	12.821
Y	1.000	+/-	2.042
Sr	38.502	+/-	3.291
Rb	1.000	+/-	6.145
Th	1.000	+/-	130.868
Bi	1.000	+/-	100.261
Au	1.000	+/-	7.180
As	80.604	+/-	17.401
Se	1.000	+/-	2.851
Pb	303.997	+/-	16.771
Hg	26.183	+/-	5.140
Zn	26.845	+/-	9.694
Cu	103.187	+/-	19.981
Ni	1.000	+/-	24.984
Co	1.000	+/-	30.640
Fe	1046.134	+/-	90.235
Mn	1.000	+/-	100.186
Cr	1.000	+/-	25.315
V	1.000	+/-	23.457
Ti	96.277	+/-	74.778
Ca	111897.500	+/-	1034.923
K	2467.721	+/-	172.534
Al	3904.847	+/-	730.750
P	269.405	+/-	105.637
Si	16200.204	+/-	601.789
Cl	1273.031	+/-	45.996
S	7865.257	+/-	117.567
Mg	1.000	+/-	9086.655

mRFA -Ergebnisse

XL3t-69288

Reading No 2
Mode Mining
Time 2019-06-27 10:11
Duration 122.01
Units ppm
Sigma Value 2
Sequence Final
Flags 3mm
INV NR Gm534
OBJEKT GEMAELENDE
MATERIAL TEXTIL FASSUNG
ANALYSESTELLE P2 SCHWARZE RAHMUNG MITTE RECH
MESSAUFBAU STATIV
FILTER m30lo30hi30li30
User Login Raquet



	ppm	+/-	Error
Ce	1.000	+/-	65.423
La	1.000	+/-	54.399
Ba	1.000	+/-	56.835
Sb	1.000	+/-	30.496
Sn	1.000	+/-	22.119
Cd	17.178	+/-	8.895
Ag	1.000	+/-	4.450
Bal	913995.563	+/-	722.567
Nb	8.091	+/-	3.225
Zr	1.000	+/-	8.891
Y	3.022	+/-	2.233
Sr	16.705	+/-	2.379
Rb	4.503	+/-	3.097
Th	1.000	+/-	90.614
Bi	1.000	+/-	69.881
Au	1.000	+/-	14.423
As	2153.961	+/-	42.070
Se	1.000	+/-	3.132
Pb	47.729	+/-	7.777
Hg	1.000	+/-	9.483
Zn	30.091	+/-	9.848
Cu	582.584	+/-	35.378
Ni	1.000	+/-	25.548
Co	1.000	+/-	75.442
Fe	11898.598	+/-	256.458
Mn	1.000	+/-	77.128
Cr	1.000	+/-	33.468
V	1.000	+/-	20.889
Ti	102.212	+/-	89.486
Ca	31971.652	+/-	409.612
K	3337.780	+/-	186.659
Al	6103.739	+/-	643.671
P	1684.836	+/-	109.440
Si	18432.711	+/-	587.654
Cl	924.168	+/-	37.481
S	8684.758	+/-	121.236
Mg	1.000	+/-	4840.570

mRFA -Ergebnisse

XL3t-69288

Reading No 3
Mode Mining
Time 2019-06-27 10:17
Duration 121.13
Units ppm
Sigma Value 2
Sequence Final
Flags 3mm
INV NR Gm534
OBJEKT GEMAELDE
MATERIAL TEXTIL FASSUNG
ANALYSESTELLE P3 SCHWARZES GEWAND
MESSAUFBAU STATIV
FILTER m30lo30hi30li30
User Login Raquet

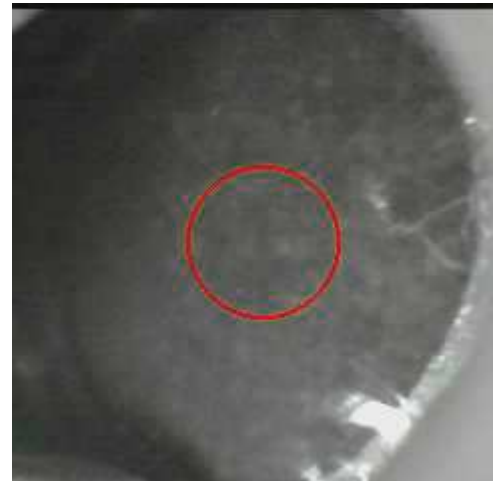


	ppm	+/-	Error
Ce	1.000	+/-	69.977
La	1.000	+/-	58.392
Ba	1.000	+/-	61.630
Sb	1.000	+/-	33.471
Sn	17.041	+/-	15.352
Cd	10.985	+/-	9.271
Ag	1.000	+/-	8.376
Bal	902481.750	+/-	913.858
Nb	8.629	+/-	3.602
Zr	1.000	+/-	11.386
Y	4.321	+/-	2.590
Sr	13.681	+/-	2.477
Rb	4.138	+/-	3.659
Th	1.000	+/-	111.429
Bi	1.000	+/-	85.634
Au	1.000	+/-	9.525
As	379.514	+/-	19.864
Se	1.000	+/-	2.488
Pb	94.201	+/-	10.685
Hg	9.788	+/-	5.997
Zn	45.560	+/-	11.725
Cu	176.104	+/-	24.893
Ni	1.000	+/-	26.466
Co	1.000	+/-	37.727
Fe	1483.302	+/-	110.758
Mn	1.000	+/-	146.531
Cr	1.000	+/-	28.826
V	1.000	+/-	25.114
Ti	250.267	+/-	110.436
Ca	31750.545	+/-	457.500
K	4524.532	+/-	232.772
Al	7265.021	+/-	842.931
P	1494.322	+/-	139.813
Si	33434.730	+/-	916.204
Cl	3469.694	+/-	80.437
S	13081.889	+/-	188.365
Mg	1.000	+/-	8248.204

mRFA -Ergebnisse

XL3t-69288

Reading No 4
Mode Mining
Time 2019-06-27 10:23
Duration 121.22
Units ppm
Sigma Value 2
Sequence Final
Flags 3mm
INV NR Gm534
OBJEKT GEMAELENDE
MATERIAL TEXTIL FASSUNG
ANALYSESTELLE P4 SARG INNENSEITE
MESSAUFBAU STATIV
FILTER m30lo30hi30li30
User Login Raquet



	ppm	+/-	Error
Ce	1.000	+/-	160.428
La	1.000	+/-	127.468
Ba	1.000	+/-	136.835
Sb	1.000	+/-	68.628
Sn	1.000	+/-	48.483
Cd	23.819	+/-	22.447
Ag	22.083	+/-	17.411
Bal	527190.125	+/-	7280.627
Nb	28.127	+/-	13.922
Zr	1.000	+/-	57.412
Y	1.000	+/-	10.929
Sr	140.760	+/-	14.747
Rb	1.000	+/-	29.557
Th	1.000	+/-	615.736
Bi	1.000	+/-	566.691
Au	1.000	+/-	27.893
As	430.504	+/-	94.728
Se	1.000	+/-	16.085
Pb	1574.496	+/-	98.068
Hg	107.056	+/-	25.093
Zn	315.466	+/-	56.805
Cu	1670.608	+/-	146.273
Ni	1.000	+/-	77.700
Co	1.000	+/-	176.105
Fe	10105.497	+/-	610.328
Mn	1048.517	+/-	291.150
Cr	1.000	+/-	144.889
V	1.000	+/-	162.949
Ti	1.000	+/-	835.677
Ca	314291.469	+/-	5639.181
K	11916.576	+/-	680.833
Al	24035.383	+/-	4928.888
P	479.240	+/-	384.124
Si	48888.449	+/-	1910.901
Cl	15856.743	+/-	364.761
S	41875.035	+/-	739.298
Mg	1.000	+/-	48066.887

mRFA -Ergebnisse

XL3t-69288

Reading No 5
Mode Mining
Time 2019-06-27 10:34
Duration 120.68
Units ppm
Sigma Value 2
Sequence Final
Flags 3mm
INV NR Gm534
OBJEKT GEMAELENDE
MATERIAL TEXTIL FASSUNG
ANALYSESTELLE P4 SARG INNENSEITE
MESSAUFBAU STATIV
FILTER m30lo30hi30li30
User Login Raquet

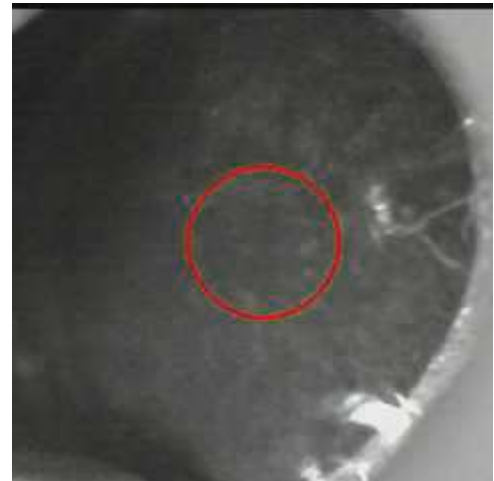


	ppm	+/-	Error
Ce	1.000	+/-	89.493
La	1.000	+/-	73.765
Ba	1.000	+/-	78.106
Sb	1.000	+/-	30.515
Sn	1.000	+/-	28.729
Cd	18.974	+/-	12.122
Ag	1.000	+/-	7.408
Bal	819035.125	+/-	1747.767
Nb	11.864	+/-	4.859
Zr	1.000	+/-	15.598
Y	1.000	+/-	3.006
Sr	40.681	+/-	4.269
Rb	1.000	+/-	7.079
Th	1.000	+/-	171.690
Bi	1.000	+/-	154.048
Au	1.000	+/-	7.865
As	127.338	+/-	25.236
Se	1.000	+/-	4.043
Pb	388.098	+/-	23.877
Hg	28.251	+/-	7.023
Zn	70.712	+/-	16.034
Cu	412.477	+/-	39.887
Ni	1.000	+/-	35.927
Co	1.000	+/-	56.279
Fe	2642.834	+/-	164.839
Mn	146.331	+/-	107.782
Cr	1.000	+/-	36.856
V	1.000	+/-	39.926
Ti	1.000	+/-	226.230
Ca	120018.789	+/-	1378.333
K	4763.599	+/-	273.526
Al	5809.721	+/-	1135.563
P	1.000	+/-	243.041
Si	21756.648	+/-	857.902
Cl	6763.465	+/-	131.407
S	17965.141	+/-	253.387
Mg	1.000	+/-	11723.034

mRFA -Ergebnisse

XL3t-69288

Reading No 6
Mode Mining
Time 2019-06-27 10:44
Duration 120.89
Units ppm
Sigma Value 2
Sequence Final
Flags 3mm
INV NR Gm534
OBJEKT GEMAELDE
MATERIAL TEXTIL FASSUNG
ANALYSESTELLE P5 SARG INNENSEITE mit HOLZ
MESSAUFBAU STATIV
FILTER m30lo30hi30li30
User Login Raquet



	ppm	+/-	Error
Ce	1.000	+/-	79.239
La	1.000	+/-	65.427
Ba	1.000	+/-	69.805
Sb	1.000	+/-	33.998
Sn	24.540	+/-	17.712
Cd	14.917	+/-	10.708
Ag	1.000	+/-	8.176
Bal	873103.313	+/-	1235.882
Nb	11.712	+/-	4.327
Zr	1.000	+/-	17.384
Y	1.000	+/-	4.064
Sr	22.367	+/-	3.162
Rb	1.000	+/-	7.351
Th	1.000	+/-	159.000
Bi	1.000	+/-	120.734
Au	1.000	+/-	8.182
As	83.090	+/-	20.170
Se	1.000	+/-	3.441
Pb	299.280	+/-	19.271
Hg	26.273	+/-	5.971
Zn	72.180	+/-	16.218
Cu	1692.151	+/-	69.571
Ni	1.000	+/-	31.199
Co	1.000	+/-	40.103
Fe	1481.678	+/-	119.535
Mn	154.670	+/-	101.043
Cr	1.000	+/-	35.158
V	1.000	+/-	27.536
Ti	194.606	+/-	131.922
Ca	47911.664	+/-	660.123
K	6097.124	+/-	283.168
Al	7932.296	+/-	1038.304
P	1375.802	+/-	169.901
Si	31212.811	+/-	950.605
Cl	6850.631	+/-	128.227
S	21438.918	+/-	290.095
Mg	1.000	+/-	12277.368

mRFA -Ergebnisse

XL3t-69288

Reading No 7
Mode Mining
Time 2019-06-27 10:53
Duration 121.52
Units ppm
Sigma Value 2
Sequence Final
Flags 3mm
INV NR Gm534
OBJEKT GEMAELENDE
MATERIAL TEXTIL FASSUNG
ANALYSESTELLE P6 STRAHLENKRANZ CHRISTUS
MESSAUFBAU STATIV
FILTER m30lo30hi30li30
User Login Raquet



	ppm	+/-	Error
Ce	1.000	+/-	110.293
La	1.000	+/-	90.297
Ba	1.000	+/-	93.923
Sb	1.000	+/-	35.335
Sn	261.932	+/-	32.612
Cd	1.000	+/-	20.131
Ag	1.000	+/-	7.264
Bal	852704.188	+/-	1422.405
Nb	1.000	+/-	7.909
Zr	1.000	+/-	26.781
Y	1.000	+/-	6.428
Sr	1.000	+/-	9.375
Rb	1.000	+/-	12.263
Th	1.000	+/-	376.544
Bi	1.000	+/-	343.130
Au	1.000	+/-	77.566
As	705.871	+/-	61.369
Se	11.139	+/-	9.863
Pb	2636.454	+/-	69.501
Hg	7774.255	+/-	133.521
Zn	324.966	+/-	46.593
Cu	1479.521	+/-	68.287
Ni	1.000	+/-	38.687
Co	1.000	+/-	86.389
Fe	9084.968	+/-	286.958
Mn	1.000	+/-	130.330
Cr	1.000	+/-	31.243
V	1.000	+/-	24.768
Ti	1.000	+/-	150.646
Ca	61370.109	+/-	867.061
K	2057.904	+/-	200.330
Al	4837.119	+/-	892.540
P	6838.023	+/-	240.152
Si	21755.275	+/-	803.707
Cl	3373.859	+/-	85.912
S	24784.391	+/-	350.108
Mg	1.000	+/-	9889.042

mRFA -Ergebnisse

XL3t-69288

Reading No 9
Mode Mining
Time 2019-06-27 11:01
Duration 120.16
Units ppm
Sigma Value 2
Sequence Final
Flags 3mm
INV NR Gm534
OBJEKT GEMAELENDE
MATERIAL TEXTIL FASSUNG
ANALYSESTELLE P7 GEWAND NIKODEMUS
MESSAUFBAU STATIV
FILTER m30lo30hi30li30
User Login Raquet



	ppm	+/-	Error
Ce	1.000	+/-	94.468
La	1.000	+/-	79.046
Ba	1.000	+/-	83.330
Sb	59.917	+/-	32.209
Sn	20.473	+/-	19.913
Cd	17.541	+/-	12.131
Ag	11.677	+/-	8.153
Bal	859169.438	+/-	1277.328
Nb	1.000	+/-	3.750
Zr	1.000	+/-	11.495
Y	1.000	+/-	2.735
Sr	20.095	+/-	3.234
Rb	1.000	+/-	6.908
Th	1.000	+/-	164.045
Bi	1.000	+/-	137.457
Au	1.000	+/-	23.960
As	3769.112	+/-	76.913
Se	1.000	+/-	3.958
Pb	362.945	+/-	22.260
Hg	1.000	+/-	16.421
Zn	1738.823	+/-	65.505
Cu	59715.074	+/-	646.081
Ni	1.000	+/-	36.651
Co	1.000	+/-	47.815
Fe	2866.697	+/-	127.357
Mn	1.000	+/-	73.848
Cr	60.295	+/-	22.419
V	1.000	+/-	30.145
Ti	143.931	+/-	122.276
Ca	30309.057	+/-	408.032
K	2081.999	+/-	160.008
Al	4677.386	+/-	716.049
P	1089.121	+/-	108.155
Si	22881.002	+/-	689.321
Cl	1815.194	+/-	51.586
S	9190.084	+/-	132.200
Mg	1.000	+/-	4941.219

mRFA -Ergebnisse

XL3t-69288

Reading No 10
Mode Mining
Time 2019-06-27 11:07
Duration 120.83
Units ppm
Sigma Value 2
Sequence Final
Flags 3mm
INV NR Gm534
OBJEKT GEMAELENDE
MATERIAL TEXTIL FASSUNG
ANALYSESTELLE P8 KOPFBEDECKUNG JOSEPH
MESSAUFBAU STATIV
FILTER m30lo30hi30li30
User Login Raquet



	ppm	+/-	Error
Ce	1.000	+/-	73.843
La	1.000	+/-	60.990
Ba	1.000	+/-	64.184
Sb	1.000	+/-	23.081
Sn	1.000	+/-	23.604
Cd	1.000	+/-	11.701
Ag	1.000	+/-	5.081
Bal	872279.188	+/-	1035.611
Nb	6.691	+/-	3.438
Zr	1.000	+/-	11.559
Y	1.000	+/-	1.905
Sr	28.033	+/-	3.209
Rb	1.000	+/-	4.040
Th	1.000	+/-	103.697
Bi	1.000	+/-	91.470
Au	1.000	+/-	10.530
As	64.347	+/-	13.774
Se	1.000	+/-	2.295
Pb	158.996	+/-	12.718
Hg	200.271	+/-	11.487
Zn	1.000	+/-	23.379
Cu	23624.969	+/-	280.377
Ni	1.000	+/-	26.605
Co	1.000	+/-	41.634
Fe	2816.337	+/-	122.640
Mn	1.000	+/-	64.872
Cr	1.000	+/-	19.727
V	1.000	+/-	21.494
Ti	228.736	+/-	86.597
Ca	38820.148	+/-	446.350
K	2202.093	+/-	149.045
Al	9321.142	+/-	829.943
P	1328.864	+/-	115.638
Si	32611.588	+/-	771.168
Cl	3874.207	+/-	71.206
S	12434.362	+/-	152.726
Mg	1.000	+/-	7856.137

mRFA -Ergebnisse

XL3t-69288

Reading No 11
Mode Mining
Time 2019-06-27 11:12
Duration 120.56
Units ppm
Sigma Value 2
Sequence Final
Flags 3mm
INV NR Gm534
OBJEKT GEMAELENDE
MATERIAL TEXTIL FASSUNG
ANALYSESTELLE P9 BAUEME
MESSAUFBAU STATIV
FILTER m30lo30hi30li30
User Login Raquet



	ppm	+/-	Error
Ce	1.000	+/-	85.056
La	1.000	+/-	71.039
Ba	1.000	+/-	74.445
Sb	111.766	+/-	30.961
Sn	100.455	+/-	21.366
Cd	23.220	+/-	11.401
Ag	1.000	+/-	5.867
Bal	839758.063	+/-	1341.661
Nb	1.000	+/-	6.908
Zr	1.000	+/-	16.606
Y	1.000	+/-	3.547
Sr	46.781	+/-	4.130
Rb	1.000	+/-	6.881
Th	1.000	+/-	224.312
Bi	1.000	+/-	216.132
Au	1.000	+/-	13.372
As	593.372	+/-	40.141
Se	1.000	+/-	4.824
Pb	1206.953	+/-	37.867
Hg	85.778	+/-	10.875
Zn	286.128	+/-	39.404
Cu	46640.652	+/-	536.137
Ni	1.000	+/-	29.044
Co	1.000	+/-	38.436
Fe	1851.395	+/-	102.990
Mn	1.000	+/-	68.703
Cr	1.000	+/-	18.218
V	1.000	+/-	16.832
Ti	121.015	+/-	83.228
Ca	61451.102	+/-	661.475
K	1789.128	+/-	150.861
Al	5807.492	+/-	749.502
P	803.681	+/-	103.459
Si	26749.484	+/-	701.044
Cl	2905.725	+/-	61.615
S	9667.917	+/-	131.418
Mg	1.000	+/-	5680.785

mRFA -Ergebnisse

XL3t-69288

Reading No 12
Mode Mining
Time 2019-06-27 11:21
Duration 121.14
Units ppm
Sigma Value 2
Sequence Final
Flags 3mm
INV NR Gm534
OBJEKT GEMAELDE
MATERIAL TEXTIL FASSUNG
ANALYSESTELLE P10 BAUM 2
MESSAUFBAU STATIV
FILTER m30lo30hi30li30
User Login Raquet



	ppm	+/-	Error
Ce	1.000	+/-	89.636
La	1.000	+/-	73.725
Ba	1.000	+/-	77.674
Sb	117.533	+/-	32.122
Sn	1.000	+/-	18.593
Cd	11.779	+/-	11.102
Ag	1.000	+/-	6.779
Bal	824905.000	+/-	1507.918
Nb	1.000	+/-	3.111
Zr	1.000	+/-	8.425
Y	1.000	+/-	2.168
Sr	28.242	+/-	3.379
Rb	1.000	+/-	3.522
Th	1.000	+/-	119.660
Bi	1.000	+/-	107.118
Au	1.000	+/-	9.990
As	441.037	+/-	25.715
Se	1.000	+/-	2.743
Pb	262.343	+/-	17.884
Hg	12.403	+/-	7.023
Zn	326.712	+/-	43.730
Cu	59375.035	+/-	615.669
Ni	1.000	+/-	30.312
Co	1.000	+/-	39.185
Fe	2128.771	+/-	107.758
Mn	1.000	+/-	66.628
Cr	1.000	+/-	18.792
V	1.000	+/-	22.221
Ti	151.327	+/-	91.238
Ca	50314.273	+/-	542.977
K	1994.936	+/-	149.590
Al	5894.923	+/-	785.856
P	153.686	+/-	91.019
Si	26746.072	+/-	700.083
Cl	3971.061	+/-	71.960
S	8895.738	+/-	120.547
Mg	14269.148	+/-	7074.823

mRFA -Ergebnisse

XL3t-69288

Reading No 13
Mode Mining
Time 2019-06-27 11:26
Duration 121.03
Units ppm
Sigma Value 2
Sequence Final
Flags 3mm
INV NR Gm534
OBJEKT GEMAELENDE
MATERIAL TEXTIL FASSUNG
ANALYSESTELLE P11 MANTEL INNENSEITE MARIA
MESSAUFBAU STATIV
FILTER m30lo30hi30li30
User Login Raquet

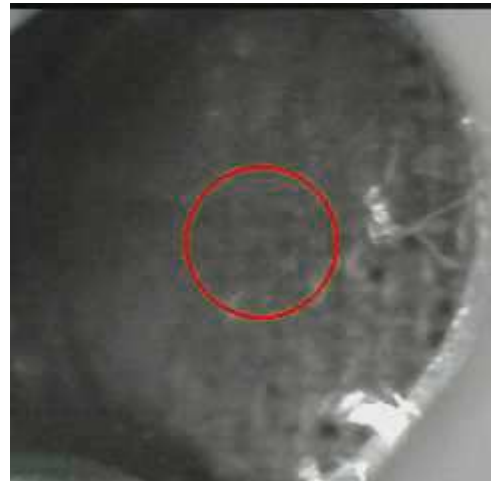


	ppm	+/-	Error
Ce	1.000	+/-	62.693
La	1.000	+/-	51.812
Ba	1.000	+/-	55.052
Sb	28.222	+/-	21.407
Sn	21.913	+/-	13.767
Cd	9.394	+/-	8.122
Ag	1.000	+/-	5.148
Bal	895562.438	+/-	809.510
Nb	8.016	+/-	3.163
Zr	1.000	+/-	9.204
Y	1.000	+/-	3.044
Sr	29.886	+/-	2.771
Rb	1.000	+/-	3.078
Th	1.000	+/-	104.042
Bi	1.000	+/-	76.918
Au	1.000	+/-	5.617
As	51.281	+/-	11.444
Se	1.000	+/-	2.078
Pb	127.392	+/-	10.567
Hg	19.960	+/-	4.139
Zn	25.117	+/-	8.913
Cu	132.655	+/-	19.949
Ni	1.000	+/-	24.144
Co	1.000	+/-	66.084
Fe	10088.971	+/-	227.754
Mn	1.000	+/-	70.755
Cr	26.418	+/-	20.349
V	17.654	+/-	16.283
Ti	1.000	+/-	111.081
Ca	58342.559	+/-	593.332
K	2100.964	+/-	150.368
Al	4290.885	+/-	606.836
P	119.476	+/-	90.341
Si	15492.952	+/-	529.270
Cl	3514.704	+/-	65.852
S	9989.149	+/-	128.166
Mg	1.000	+/-	6593.009

mRFA -Ergebnisse

XL3t-69288

Reading No 14
Mode Mining
Time 2019-06-27 11:34
Duration 121.93
Units ppm
Sigma Value 2
Sequence Final
Flags 3mm
INV NR Gm534
OBJEKT GEMAELDE
MATERIAL TEXTIL FASSUNG
ANALYSESTELLE P12 KLEID MARIA MAGDALENA
MESSAUFBAU STATIV
FILTER m30lo30hi30li30
User Login Raquet



	ppm	+/-	Error
Ce	1.000	+/-	72.521
La	1.000	+/-	59.544
Ba	1.000	+/-	63.694
Sb	1.000	+/-	31.989
Sn	1.000	+/-	16.979
Cd	11.666	+/-	9.491
Ag	1.000	+/-	5.943
Bal	908928.813	+/-	816.743
Nb	8.694	+/-	3.892
Zr	1.000	+/-	12.545
Y	1.000	+/-	2.295
Sr	13.004	+/-	2.672
Rb	1.000	+/-	5.126
Th	1.000	+/-	133.424
Bi	1.000	+/-	113.210
Au	1.000	+/-	10.151
As	159.379	+/-	20.580
Se	1.000	+/-	3.100
Pb	329.795	+/-	18.528
Hg	123.844	+/-	10.001
Zn	1.000	+/-	22.032
Cu	8765.858	+/-	156.695
Ni	1.000	+/-	27.597
Co	1.000	+/-	32.913
Fe	1192.453	+/-	96.753
Mn	1.000	+/-	75.183
Cr	1.000	+/-	23.917
V	1.000	+/-	31.643
Ti	114.102	+/-	93.751
Ca	40564.367	+/-	514.585
K	2272.497	+/-	168.283
Al	4113.739	+/-	650.174
P	902.119	+/-	115.992
Si	16619.889	+/-	605.541
Cl	3673.683	+/-	76.103
S	12205.979	+/-	167.351
Mg	1.000	+/-	4913.223

mRFA -Ergebnisse

XL3t-69288

Reading No 16
Mode Mining
Time 2019-06-27 11:44
Duration 121.63
Units ppm
Sigma Value 2
Sequence Final
Flags 3mm
INV NR Gm534
OBJEKT GEMAELENDE
MATERIAL TEXTIL FASSUNG
ANALYSESTELLE P13 textile HINTERSPANNUNG
MESSAUFBAU STATIV
FILTER m30lo30hi30li30
User Login Raquet



	ppm	+/-	Error
Ce	1.000	+/-	74.872
La	1.000	+/-	62.745
Ba	1.000	+/-	66.341
Sb	1.000	+/-	24.407
Sn	1.000	+/-	22.537
Cd	16.404	+/-	10.354
Ag	1.000	+/-	6.079
Bal	968356.375	+/-	333.110
Nb	10.501	+/-	3.541
Zr	1.000	+/-	9.849
Y	4.779	+/-	2.414
Sr	8.070	+/-	2.185
Rb	3.868	+/-	3.186
Th	1.000	+/-	105.864
Bi	1.000	+/-	71.601
Au	1.000	+/-	5.162
As	9.091	+/-	5.529
Se	1.000	+/-	1.942
Pb	1.000	+/-	4.288
Hg	1.000	+/-	1.741
Zn	15.149	+/-	9.332
Cu	1.000	+/-	14.316
Ni	1.000	+/-	27.227
Co	1.000	+/-	22.910
Fe	1.000	+/-	68.382
Mn	110.394	+/-	96.028
Cr	1.000	+/-	31.412
V	1.000	+/-	22.531
Ti	1.000	+/-	127.628
Ca	3701.817	+/-	140.028
K	2318.077	+/-	192.076
Al	5160.484	+/-	652.509
P	86.456	+/-	79.070
Si	15242.905	+/-	640.140
Cl	286.611	+/-	36.823
S	4669.050	+/-	100.045
Mg	1.000	+/-	4207.969

mRFA -Ergebnisse

XL3t-69288

Reading No 20
Mode Mining
Time 2019-06-27 12:09
Duration 120.55
Units ppm
Sigma Value 2
Sequence Final
Flags 3mm
INV NR Gm534
OBJEKT GEMAELENDE
MATERIAL TEXTIL FASSUNG
ANALYSESTELLE P14 TEST LEINWAND HOLZ
MESSAUFBAU STATIV
FILTER m30lo30hi30li30
User Login Raquet



	ppm	+/-	Error
Ce	1.000	+/-	66.844
La	1.000	+/-	54.977
Ba	1.000	+/-	58.059
Sb	1.000	+/-	27.326
Sn	1.000	+/-	13.642
Cd	10.038	+/-	8.763
Ag	1.000	+/-	4.630
Bal	984036.688	+/-	266.631
Nb	13.664	+/-	3.374
Zr	11.581	+/-	6.673
Y	5.232	+/-	2.250
Sr	9.680	+/-	2.095
Rb	1.000	+/-	4.123
Th	1.000	+/-	86.013
Bi	1.000	+/-	80.345
Au	1.000	+/-	4.542
As	1.000	+/-	3.793
Se	1.000	+/-	1.890
Pb	1.000	+/-	3.632
Hg	1.000	+/-	1.376
Zn	15.091	+/-	8.630
Cu	1.000	+/-	13.708
Ni	1.000	+/-	25.224
Co	1.000	+/-	20.769
Fe	1.000	+/-	41.708
Mn	1.000	+/-	71.973
Cr	1.000	+/-	31.013
V	1.000	+/-	24.456
Ti	1.000	+/-	129.434
Ca	6694.722	+/-	332.833
K	6147.113	+/-	351.191
Al	1.000	+/-	328.128
P	522.124	+/-	70.969
Si	585.042	+/-	199.927
Cl	1272.217	+/-	72.491
S	676.753	+/-	44.794
Mg	1.000	+/-	3885.954

mRFA -Ergebnisse

XL3t-69288

Reading No 21
Mode Mining
Time 2019-06-27 12:15
Duration 120.74
Units ppm
Sigma Value 2
Sequence Final
Flags 3mm
INV NR Gm534
OBJEKT GEMAELENDE
MATERIAL TEXTIL FASSUNG
ANALYSESTELLE P15 TEST LEINWAND HOLZ 8mm ABST
MESSAUFBAU STATIV
FILTER m30lo30hi30li30
User Login Raquet



	ppm	+/-	Error
Ce	1.000	+/-	89.755
La	1.000	+/-	73.391
Ba	1.000	+/-	78.667
Sb	1.000	+/-	49.547
Sn	1.000	+/-	17.916
Cd	1.000	+/-	14.817
Ag	1.000	+/-	9.740
Bal	977707.813	+/-	323.176
Nb	14.959	+/-	4.509
Zr	1.000	+/-	13.266
Y	6.002	+/-	3.021
Sr	10.502	+/-	2.850
Rb	1.000	+/-	4.681
Th	1.000	+/-	107.964
Bi	1.000	+/-	90.931
Au	1.000	+/-	5.510
As	1.000	+/-	8.102
Se	1.000	+/-	2.794
Pb	1.000	+/-	4.752
Hg	1.000	+/-	2.159
Zn	22.666	+/-	12.308
Cu	1.000	+/-	18.409
Ni	1.000	+/-	34.342
Co	1.000	+/-	27.395
Fe	1.000	+/-	54.573
Mn	1.000	+/-	99.084
Cr	1.000	+/-	44.699
V	1.000	+/-	31.472
Ti	1.000	+/-	186.430
Ca	8618.330	+/-	283.835
K	9044.169	+/-	409.785
Al	1.000	+/-	774.231
P	794.622	+/-	111.200
Si	752.113	+/-	313.379
Cl	2085.531	+/-	90.471
S	943.276	+/-	58.610
Mg	1.000	+/-	6816.218

mRFA -Ergebnisse

XL3t-69288

Reading No 22
Mode Mining
Time 2019-06-27 12:22
Duration 122.06
Units ppm
Sigma Value 2
Sequence Final
Flags 3mm
INV NR Gm534
OBJEKT GEMAELENDE
MATERIAL TEXTIL FASSUNG
ANALYSESTELLE P16 TEST LEINWAND HOLZ KREIDE!!
MESSAUFBAU STATIV
FILTER m30lo30hi30li30
User Login Raquet



	ppm	+/-	Error
Ce	1.000	+/-	58.875
La	1.000	+/-	48.851
Ba	1.000	+/-	51.815
Sb	1.000	+/-	26.884
Sn	19.179	+/-	13.120
Cd	15.176	+/-	8.157
Ag	1.000	+/-	4.035
Bal	955332.313	+/-	382.543
Nb	9.835	+/-	3.005
Zr	8.871	+/-	5.760
Y	4.671	+/-	2.026
Sr	13.654	+/-	2.107
Rb	1.000	+/-	2.625
Th	1.000	+/-	72.500
Bi	1.000	+/-	61.311
Au	1.000	+/-	4.060
As	1.000	+/-	5.709
Se	1.000	+/-	1.758
Pb	1.000	+/-	2.938
Hg	1.000	+/-	1.017
Zn	21.291	+/-	8.333
Cu	1.000	+/-	11.392
Ni	1.000	+/-	22.647
Co	1.000	+/-	18.900
Fe	1.000	+/-	36.536
Mn	1.000	+/-	63.017
Cr	1.000	+/-	23.886
V	1.000	+/-	14.852
Ti	1.000	+/-	92.742
Ca	24890.375	+/-	341.818
K	5306.547	+/-	217.190
Al	2099.075	+/-	434.453
P	137.322	+/-	69.384
Si	5426.897	+/-	333.933
Cl	1747.837	+/-	48.287
S	4966.905	+/-	84.874
Mg	1.000	+/-	3903.272