

mRFA -Ergebnisse

XL3t-69288

Reading No 11
Mode Mining
Time 2018-10-18 10:43
Duration 121.54
Units ppm
Sigma Value 2
Sequence Final
Flags
INV NR Gm8
OBJEKT TAFELGEMAELEN
MATERIAL HOLZ METALL FASSUNG
ANALYSESTELLE P1 KELCH
MESSAUFBAU STATIV
FILTER m30lo30hi30li30
User Login Raquet



	ppm	+/-	Error
Ce	-339.000	+/-	113.677
La	1.000	+/-	52.066
Ba	1.000	+/-	55.924
Sb	1.000	+/-	20.586
Sn	37.319	+/-	10.817
Cd	1.000	+/-	6.603
Ag	1.000	+/-	3.980
Bal	854658.750	+/-	850.995
Nb	1.000	+/-	6.931
Zr	1.000	+/-	23.181
Y	1.000	+/-	5.282
Sr	364.930	+/-	7.669
Rb	28.779	+/-	11.804
Th	1.000	+/-	338.699
Bi	1.000	+/-	342.329
Au	5428.532	+/-	84.210
As	1677.787	+/-	59.867
Se	1.000	+/-	10.493
Pb	5391.829	+/-	71.543
Hg	1.000	+/-	7.610
Zn	143.578	+/-	17.829
Cu	283.036	+/-	21.111
Ni	1.000	+/-	28.046
Co	1.000	+/-	29.987
Fe	1917.530	+/-	82.661
Mn	1.000	+/-	73.853
Cr	23.425	+/-	20.827
V	1.000	+/-	26.099
Ti	113.530	+/-	87.229
Ca	85616.797	+/-	805.910
K	4142.226	+/-	172.440
Al	1661.914	+/-	752.293
P	9878.617	+/-	224.764
Si	11174.336	+/-	520.290
Cl	2263.298	+/-	51.817
S	15193.813	+/-	184.975
Mg	1.000	+/-	8099.134

mRFA -Ergebnisse

XL3t-69288

Reading No 12
Mode Mining
Time 2018-10-18 10:48
Duration 120.59
Units ppm
Sigma Value 2
Sequence Final
Flags 3mm
INV NR Gm8
OBJEKT TAFELGEMAELENDE
MATERIAL HOLZ METALL FASSUNG
ANALYSESTELLE P2 RADZAHN 1
MESSAUFBAU STATIV
FILTER m30lo30hi30li30
User Login Raquet



	ppm	+/-	Error
Ce	1.000	+/-	207.957
La	1.000	+/-	171.027
Ba	1.000	+/-	178.908
Sb	1.000	+/-	60.223
Sn	1.000	+/-	49.543
Cd	1.000	+/-	21.576
Ag	1020.166	+/-	58.048
Bal	868452.750	+/-	1675.248
Nb	36.161	+/-	30.755
Zr	1.000	+/-	103.954
Y	1.000	+/-	26.933
Sr	269.488	+/-	17.416
Rb	1.000	+/-	52.170
Th	1.000	+/-	1403.313
Bi	1.000	+/-	1420.591
Au	1.000	+/-	68.517
As	7037.732	+/-	275.915
Se	28.082	+/-	20.167
Pb	30327.695	+/-	719.023
Hg	2462.358	+/-	85.080
Zn	257.892	+/-	37.212
Cu	394.638	+/-	45.147
Ni	1.000	+/-	85.821
Co	1.000	+/-	129.351
Fe	16200.308	+/-	536.318
Mn	228.393	+/-	136.061
Cr	98.114	+/-	39.640
V	1.000	+/-	39.533
Ti	1.000	+/-	166.103
Ca	27118.180	+/-	695.503
K	4794.818	+/-	409.930
Al	2260.446	+/-	892.247
P	2221.018	+/-	186.026
Si	11440.504	+/-	689.346
Cl	7068.363	+/-	202.310
S	18282.943	+/-	452.924
Mg	1.000	+/-	9401.994

mRFA -Ergebnisse

XL3t-69288

Reading No 13
Mode Mining
Time 2018-10-18 10:53
Duration 120.96
Units ppm
Sigma Value 2
Sequence Final
Flags 3mm
INV NR Gm8
OBJEKT TAFELGEMAELENDE
MATERIAL HOLZ METALL FASSUNG
ANALYSESTELLE P3 RADZAHN 2
MESSAUFBAU STATIV
FILTER m30lo30hi30li30
User Login Raquet



	ppm	+/-	Error
Ce	1.000	+/-	682.024
La	1.000	+/-	516.561
Ba	1.000	+/-	475.497
Sb	202.559	+/-	119.443
Sn	20656.951	+/-	772.701
Cd	1.000	+/-	67.711
Ag	1005.413	+/-	85.630
Bal	796466.688	+/-	4233.797
Nb	153.723	+/-	88.175
Zr	1.000	+/-	260.156
Y	1.000	+/-	70.735
Sr	91.981	+/-	19.695
Rb	1.000	+/-	142.649
Th	1.000	+/-	3360.746
Bi	1.000	+/-	2714.063
Au	1.000	+/-	85.975
As	8079.242	+/-	498.423
Se	1.000	+/-	29.846
Pb	97901.680	+/-	2728.029
Hg	1.000	+/-	52.750
Zn	1092.424	+/-	73.712
Cu	5397.237	+/-	217.145
Ni	1.000	+/-	86.182
Co	1.000	+/-	145.435
Fe	13476.095	+/-	541.603
Mn	1.000	+/-	159.537
Cr	82.479	+/-	48.197
V	1.000	+/-	46.294
Ti	1.000	+/-	199.129
Ca	24724.275	+/-	1046.888
K	4160.690	+/-	671.910
Al	1315.378	+/-	1138.728
P	4104.482	+/-	239.122
Si	7208.276	+/-	637.285
Cl	5311.835	+/-	203.270
S	8568.641	+/-	272.828
Mg	1.000	+/-	11212.646

mRFA -Ergebnisse

XL3t-69288

Reading No 14
Mode Mining
Time 2018-10-18 10:57
Duration 121.41
Units ppm
Sigma Value 2
Sequence Final
Flags
INV NR Gm8
OBJEKT TAFELGEMAELEN
MATERIAL HOLZ METALL FASSUNG
ANALYSESTELLE P4 SCHWERTKLINGE
MESSAUFBAU STATIV
FILTER m30lo30hi30li30
User Login Raquet

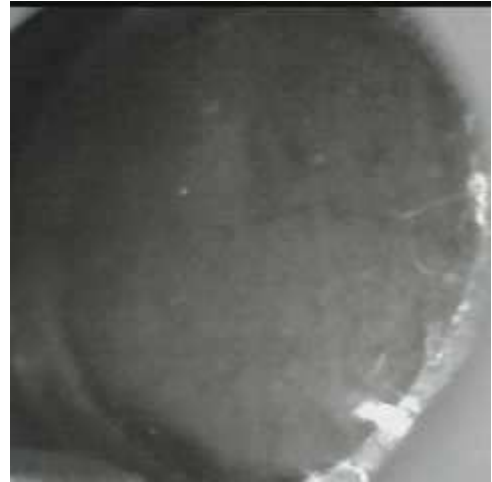


	ppm	+/-	Error
Ce	-339.000	+/-	141.352
La	1.000	+/-	64.523
Ba	1.000	+/-	85.079
Sb	1.000	+/-	23.722
Sn	107.747	+/-	19.502
Cd	1.000	+/-	9.162
Ag	1405.725	+/-	32.474
Bal	868136.438	+/-	1052.062
Nb	27.610	+/-	16.597
Zr	1.000	+/-	58.933
Y	1.000	+/-	14.332
Sr	339.172	+/-	11.513
Rb	1.000	+/-	27.223
Th	1.000	+/-	823.280
Bi	1.000	+/-	864.887
Au	1.000	+/-	41.011
As	5562.992	+/-	162.177
Se	18.861	+/-	13.162
Pb	21106.424	+/-	340.809
Hg	2400.454	+/-	52.137
Zn	222.033	+/-	23.712
Cu	1314.548	+/-	50.946
Ni	1.000	+/-	38.112
Co	1.000	+/-	78.666
Fe	16599.525	+/-	358.765
Mn	163.904	+/-	84.402
Cr	83.600	+/-	25.925
V	33.610	+/-	24.848
Ti	1.000	+/-	156.424
Ca	39080.035	+/-	634.632
K	4940.025	+/-	317.563
Al	1796.850	+/-	725.692
P	2614.335	+/-	144.756
Si	12065.305	+/-	508.543
Cl	5823.293	+/-	109.572
S	16157.459	+/-	274.419
Mg	1.000	+/-	8223.557

mRFA -Ergebnisse

XL3t-69288

Reading No 15
Mode Mining
Time 2018-10-18 11:02
Duration 122.12
Units ppm
Sigma Value 2
Sequence Final
Flags
INV NR Gm8
OBJEKT TAFELGEMAELEN
MATERIAL HOLZ METALL FASSUNG
ANALYSESTELLE P5 SCHWERTKLINGE 2
MESSAUFBAU STATIV
FILTER m30lo30hi30li30
User Login Raquet



	ppm	+/-	Error
Ce	-339.000	+/-	138.356
La	1.000	+/-	84.836
Ba	1.000	+/-	67.095
Sb	89.030	+/-	23.700
Sn	3168.848	+/-	57.314
Cd	28.909	+/-	9.466
Ag	1846.724	+/-	35.481
Bal	913135.688	+/-	687.997
Nb	1.000	+/-	18.358
Zr	1.000	+/-	45.547
Y	1.000	+/-	11.071
Sr	288.557	+/-	9.462
Rb	1.000	+/-	29.250
Th	1.000	+/-	651.380
Bi	1.000	+/-	592.739
Au	1242.354	+/-	53.991
As	3281.072	+/-	117.902
Se	1.000	+/-	12.661
Pb	14459.306	+/-	217.520
Hg	1451.749	+/-	34.777
Zn	582.195	+/-	30.219
Cu	849.899	+/-	39.229
Ni	1.000	+/-	37.261
Co	1.000	+/-	63.181
Fe	9345.907	+/-	229.977
Mn	1.000	+/-	122.553
Cr	71.552	+/-	20.815
V	1.000	+/-	18.522
Ti	1.000	+/-	88.247
Ca	25281.072	+/-	554.225
K	3643.569	+/-	385.772
Al	1.000	+/-	1143.487
P	1487.960	+/-	137.112
Si	7106.344	+/-	460.694
Cl	4619.333	+/-	94.973
S	8019.968	+/-	154.191
Mg	1.000	+/-	7728.792

mRFA -Ergebnisse

XL3t-69288

Reading No 16
Mode Mining
Time 2018-10-18 11:06
Duration 120.77
Units ppm
Sigma Value 2
Sequence Final
Flags 3mm
INV NR Gm8
OBJEKT TAFELGEMAELEN
MATERIAL HOLZ METALL FASSUNG
ANALYSESTELLE P6 SCHWERTKONTUR
MESSAUFBAU STATIV
FILTER m30lo30hi30li30
User Login Raquet



	ppm	+/-	Error
Ce	1.000	+/-	155.731
La	1.000	+/-	104.996
Ba	1.000	+/-	144.301
Sb	1.000	+/-	55.829
Sn	42.365	+/-	26.530
Cd	1.000	+/-	22.923
Ag	1.000	+/-	11.440
Bal	769538.938	+/-	2148.748
Nb	1.000	+/-	6.421
Zr	1.000	+/-	24.446
Y	1.000	+/-	5.664
Sr	374.250	+/-	13.100
Rb	1.000	+/-	20.320
Th	1.000	+/-	343.566
Bi	1.000	+/-	326.236
Au	3145.907	+/-	102.125
As	554.224	+/-	56.114
Se	1.000	+/-	12.769
Pb	1971.684	+/-	59.834
Hg	1.000	+/-	11.061
Zn	113.878	+/-	26.466
Cu	163.273	+/-	30.103
Ni	1.000	+/-	40.619
Co	1.000	+/-	57.613
Fe	2694.595	+/-	170.732
Mn	1.000	+/-	118.879
Cr	89.738	+/-	31.180
V	1.000	+/-	34.106
Ti	150.168	+/-	113.619
Ca	170693.875	+/-	1958.984
K	1468.819	+/-	203.876
Al	1746.789	+/-	1084.192
P	26553.727	+/-	476.151
Si	6234.849	+/-	674.973
Cl	2396.221	+/-	82.412
S	12066.688	+/-	199.191
Mg	1.000	+/-	11173.155

mRFA -Ergebnisse

XL3t-69288

Reading No 17
Mode Mining
Time 2018-10-18 11:10
Duration 121.12
Units ppm
Sigma Value 2
Sequence Final
Flags
INV NR Gm8
OBJEKT TAFELGEMAELENDE
MATERIAL HOLZ METALL FASSUNG
ANALYSESTELLE P7 GOLDGRUND
MESSAUFBAU STATIV
FILTER m30lo30hi30li30
User Login Raquet



	ppm	+/-	Error
Ce	-339.000	+/-	89.190
La	1.000	+/-	40.662
Ba	1.000	+/-	43.825
Sb	1.000	+/-	17.755
Sn	11.568	+/-	8.209
Cd	6.643	+/-	5.962
Ag	1.000	+/-	3.165
Bal	755427.563	+/-	1165.191
Nb	1.000	+/-	1.768
Zr	1.000	+/-	6.869
Y	1.000	+/-	1.303
Sr	376.672	+/-	6.586
Rb	16.415	+/-	4.838
Th	1.000	+/-	100.975
Bi	1.000	+/-	85.894
Au	3303.012	+/-	52.265
As	41.123	+/-	10.711
Se	1.000	+/-	6.107
Pb	174.953	+/-	8.988
Hg	7.439	+/-	5.069
Zn	98.985	+/-	13.733
Cu	186.233	+/-	16.691
Ni	1.000	+/-	23.622
Co	1.000	+/-	27.447
Fe	2617.282	+/-	84.510
Mn	1.000	+/-	59.921
Cr	112.790	+/-	20.704
V	1.000	+/-	20.491
Ti	127.975	+/-	81.457
Ca	185909.328	+/-	1043.126
K	1349.762	+/-	141.766
Al	3638.067	+/-	1065.247
P	26969.619	+/-	364.467
Si	7982.286	+/-	592.850
Cl	1622.322	+/-	45.979
S	10020.050	+/-	130.237
Mg	1.000	+/-	12085.759

mRFA -Ergebnisse

XL3t-69288

Reading No 18
Mode Mining
Time 2018-10-18 11:15
Duration 121.23
Units ppm
Sigma Value 2
Sequence Final
Flags
INV NR Gm8
OBJEKT TAFELGEMAELEN
MATERIAL HOLZ METALL FASSUNG
ANALYSESTELLE P8 GOLDGRUND BODEN
MESSAUFBAU STATIV
FILTER m30lo30hi30li30
User Login Raquet



	ppm	+/-	Error
Ce	-339.000	+/-	112.501
La	1.000	+/-	51.505
Ba	1.000	+/-	55.010
Sb	1.000	+/-	18.346
Sn	26.092	+/-	10.353
Cd	1.000	+/-	10.265
Ag	1.000	+/-	4.929
Bal	838708.563	+/-	1074.632
Nb	1.000	+/-	11.651
Zr	1.000	+/-	36.836
Y	1.000	+/-	8.837
Sr	250.243	+/-	8.623
Rb	32.480	+/-	18.146
Th	1.000	+/-	531.433
Bi	1.000	+/-	456.438
Au	4555.199	+/-	92.759
As	3462.329	+/-	98.254
Se	1.000	+/-	12.546
Pb	10427.521	+/-	145.758
Hg	2466.981	+/-	43.907
Zn	303.671	+/-	26.522
Cu	485.004	+/-	28.366
Ni	1.000	+/-	31.355
Co	1.000	+/-	57.601
Fe	10424.318	+/-	220.926
Mn	175.509	+/-	76.703
Cr	91.884	+/-	22.383
V	1.000	+/-	23.903
Ti	1.000	+/-	176.644
Ca	41269.840	+/-	534.388
K	2059.265	+/-	148.101
Al	5813.366	+/-	968.267
P	39733.078	+/-	574.628
Si	17456.059	+/-	729.809
Cl	1885.743	+/-	53.117
S	20372.873	+/-	280.829
Mg	1.000	+/-	8122.466