

mRFA -Ergebnisse

XL3t-69288

Reading No 1
 Mode Mining
 Time 2018-05-24 10:34
 Duration 120.05
 Units ppm
 Sigma Value 2
 Sequence Final
 Flags
 INV NR Gm873
 OBJEKT TAFELGEMAELEN
 MATERIAL HOLZ METALL FASSUNG
 ANALYSESTELLE P1 FLUEGEL
 MESSAUFBAU STATIV
 FILTER m30lo30hi30li30
 User Login Raquet



	ppm	+/-	Error
Ce	-339.000	+/-	140.642
La	1.000	+/-	80.628
Ba	1.000	+/-	68.252
Sb	1.000	+/-	22.192
Sn	122.720	+/-	14.503
Cd	1.000	+/-	7.627
Ag	10.830	+/-	5.913
Bal	821735.563	+/-	1518.885
Nb	53.028	+/-	24.896
Zr	1.000	+/-	82.942
Y	1.000	+/-	20.991
Sr	196.363	+/-	8.935
Rb	1.000	+/-	41.030
Th	1.000	+/-	1152.829
Bi	1.000	+/-	1168.023
Au	1220.153	+/-	59.199
As	8518.391	+/-	232.199
Se	1.000	+/-	22.258
Pb	37026.844	+/-	623.463
Hg	1.000	+/-	16.047
Zn	100.320	+/-	23.522
Cu	18588.023	+/-	337.435
Ni	1.000	+/-	35.877
Co	1.000	+/-	42.823
Fe	692.449	+/-	70.503
Mn	152.744	+/-	76.775
Cr	1.000	+/-	21.985
V	1.000	+/-	16.576
Ti	1.000	+/-	88.179
Ca	15917.357	+/-	317.890
K	619.682	+/-	115.972
Al	3873.532	+/-	783.562
P	3660.188	+/-	176.312
Si	19226.730	+/-	622.372
Cl	5127.123	+/-	104.480
S	37348.781	+/-	643.637
Mg	25809.121	+/-	8666.062

mRFA -Ergebnisse

XL3t-69288

Reading No 2
 Mode Mining
 Time 2018-05-24 10:37
 Duration 120.85
 Units ppm
 Sigma Value 2
 Sequence Final
 Flags 3mm
 INV NR Gm873
 OBJEKT TAFELGEMAELENDE
 MATERIAL HOLZ METALL FASSUNG
 ANALYSESTELLE P1 FLUEGEL
 MESSAUFBAU STATIV
 FILTER m30lo30hi30li30
 User Login Raquet

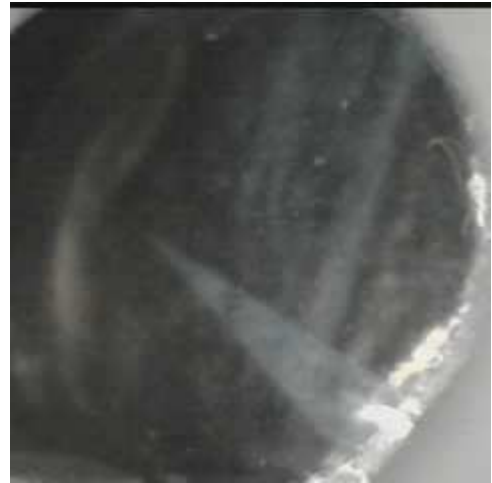


	ppm	+/-	Error
Ce	1.000	+/-	190.444
La	1.000	+/-	157.122
Ba	1.000	+/-	163.306
Sb	1.000	+/-	53.151
Sn	193.661	+/-	44.089
Cd	1.000	+/-	18.181
Ag	1.000	+/-	17.873
Bal	847333.750	+/-	1743.158
Nb	55.501	+/-	34.087
Zr	1.000	+/-	111.565
Y	1.000	+/-	28.514
Sr	201.411	+/-	12.353
Rb	1.000	+/-	61.371
Th	1.000	+/-	1487.646
Bi	1.000	+/-	1386.026
Au	1219.503	+/-	82.653
As	8541.016	+/-	288.694
Se	1.000	+/-	31.383
Pb	40781.098	+/-	869.672
Hg	1.000	+/-	23.826
Zn	84.678	+/-	26.942
Cu	11759.362	+/-	296.468
Ni	1.000	+/-	63.197
Co	51.509	+/-	44.359
Fe	414.392	+/-	86.553
Mn	1.000	+/-	173.380
Cr	1.000	+/-	30.877
V	1.000	+/-	23.009
Ti	1.000	+/-	108.504
Ca	7196.871	+/-	241.007
K	550.801	+/-	139.149
Al	4096.664	+/-	923.473
P	3735.067	+/-	234.893
Si	18499.645	+/-	807.920
Cl	10205.548	+/-	258.753
S	45079.516	+/-	986.332
Mg	1.000	+/-	11609.472

mRFA -Ergebnisse

XL3t-69288

Reading No 3
 Mode Mining
 Time 2018-05-24 10:42
 Duration 121.01
 Units ppm
 Sigma Value 2
 Sequence Final
 Flags
 INV NR Gm873
 OBJEKT TAFELGEMAELEN
 MATERIAL HOLZ METALL FASSUNG
 ANALYSESTELLE P2 GEWAND ENGEL
 MESSAUFBAU STATIV
 FILTER m30lo30hi30li30
 User Login Raquet



	ppm	+/-	Error
Ce	-339.000	+/-	149.759
La	1.000	+/-	68.774
Ba	1.000	+/-	73.148
Sb	1.000	+/-	24.050
Sn	140.251	+/-	16.338
Cd	1.000	+/-	8.506
Ag	20.277	+/-	6.884
Bal	774506.063	+/-	2014.240
Nb	30.981	+/-	23.340
Zr	1.000	+/-	82.054
Y	1.000	+/-	20.598
Sr	236.866	+/-	10.603
Rb	1.000	+/-	45.066
Th	1.000	+/-	1159.456
Bi	1.000	+/-	1074.257
Au	1015.464	+/-	60.503
As	4984.231	+/-	206.604
Se	1.000	+/-	21.647
Pb	27729.176	+/-	500.625
Hg	1.000	+/-	17.025
Zn	88.941	+/-	44.906
Cu	87012.203	+/-	1225.265
Ni	1.000	+/-	51.189
Co	1.000	+/-	39.315
Fe	2311.044	+/-	102.226
Mn	73.215	+/-	67.515
Cr	1.000	+/-	23.957
V	1.000	+/-	25.010
Ti	161.199	+/-	113.641
Ca	13294.112	+/-	267.085
K	3023.361	+/-	187.506
Al	14958.939	+/-	1075.134
P	2397.602	+/-	130.307
Si	43333.383	+/-	907.043
Cl	4030.526	+/-	74.737
S	20652.119	+/-	318.990
Mg	1.000	+/-	7548.957

mRFA -Ergebnisse

XL3t-69288

Reading No 4
 Mode Mining
 Time 2018-05-24 10:46
 Duration 121.66
 Units ppm
 Sigma Value 2
 Sequence Final
 Flags
 INV NR Gm873
 OBJEKT TAFELGEMAELEN
 MATERIAL HOLZ METALL FASSUNG
 ANALYSESTELLE P3 HINTERGRUND
 MESSAUFBAU STATIV
 FILTER m30lo30hi30li30
 User Login Raquet



	ppm	+/-	Error
Ce	-339.000	+/-	415.399
La	155.247	+/-	118.939
Ba	150.189	+/-	125.532
Sb	1.000	+/-	38.294
Sn	74.481	+/-	22.952
Cd	1.000	+/-	13.357
Ag	17.465	+/-	10.438
Bal	761491.063	+/-	2980.948
Nb	151.353	+/-	62.119
Zr	1.000	+/-	186.315
Y	1.000	+/-	49.945
Sr	119.240	+/-	13.397
Rb	1.000	+/-	101.504
Th	1.000	+/-	2444.763
Bi	1.000	+/-	1880.432
Au	540.417	+/-	79.125
As	15427.502	+/-	457.649
Se	1.000	+/-	34.529
Pb	94537.781	+/-	1893.055
Hg	1.000	+/-	32.040
Zn	154.900	+/-	31.398
Cu	20901.080	+/-	409.861
Ni	138.050	+/-	53.143
Co	58.542	+/-	46.471
Fe	1274.128	+/-	109.654
Mn	242.940	+/-	101.017
Cr	1.000	+/-	42.372
V	1.000	+/-	29.427
Ti	1.000	+/-	120.334
Ca	12795.673	+/-	325.997
K	2408.789	+/-	204.318
Al	7558.354	+/-	1048.687
P	4584.010	+/-	205.946
Si	25615.254	+/-	784.370
Cl	6233.691	+/-	143.407
S	45369.875	+/-	888.038
Mg	1.000	+/-	13551.847

mRFA -Ergebnisse

XL3t-69288

Reading No 5
 Mode Mining
 Time 2018-05-24 10:50
 Duration 120.37
 Units ppm
 Sigma Value 2
 Sequence Final
 Flags
 INV NR Gm873
 OBJEKT TAFELGEMAELENDE
 MATERIAL HOLZ METALL FASSUNG
 ANALYSESTELLE P4 FLUEGEL ROT
 MESSAUFBAU STATIV
 FILTER m30lo30hi30li30
 User Login Raquet



	ppm	+/-	Error
Ce	-339.000	+/-	178.143
La	1.000	+/-	73.036
Ba	1.000	+/-	90.298
Sb	1.000	+/-	26.831
Sn	600.330	+/-	26.462
Cd	1.000	+/-	12.295
Ag	1.000	+/-	8.312
Bal	834329.125	+/-	1513.759
Nb	104.906	+/-	34.956
Zr	1.000	+/-	109.608
Y	1.000	+/-	28.001
Sr	160.091	+/-	9.614
Rb	1.000	+/-	56.920
Th	1.000	+/-	1483.575
Bi	1.000	+/-	1194.533
Au	1.000	+/-	33.601
As	9707.688	+/-	273.086
Se	1.000	+/-	23.644
Pb	56380.758	+/-	924.981
Hg	1.000	+/-	19.413
Zn	102.373	+/-	14.138
Cu	2126.965	+/-	68.695
Ni	57.251	+/-	40.667
Co	58.675	+/-	32.436
Fe	252.287	+/-	63.530
Mn	143.418	+/-	80.932
Cr	1.000	+/-	24.135
V	1.000	+/-	20.360
Ti	1.000	+/-	92.106
Ca	12703.155	+/-	289.462
K	3185.592	+/-	192.156
Al	5716.157	+/-	841.966
P	2935.282	+/-	178.751
Si	23459.203	+/-	717.878
Cl	5182.853	+/-	111.982
S	42793.898	+/-	770.589
Mg	1.000	+/-	10863.812

mRFA -Ergebnisse

XL3t-69288

Reading No 6
 Mode Mining
 Time 2018-05-24 10:55
 Duration 121.05
 Units ppm
 Sigma Value 2
 Sequence Final
 Flags
 INV NR Gm873
 OBJEKT TAFELGEMAELEN
 MATERIAL HOLZ METALL FASSUNG
 ANALYSESTELLE P5 NIMBUS MARIA
 MESSAUFBAU STATIV
 FILTER m30lo30hi30li30
 User Login Raquet



	ppm	+/-	Error
Ce	-111.917	+/-	224.900
La	119.102	+/-	102.653
Ba	132.807	+/-	108.573
Sb	1.000	+/-	33.459
Sn	136.812	+/-	21.451
Cd	1.000	+/-	11.764
Ag	1.000	+/-	7.127
Bal	802401.813	+/-	2155.662
Nb	85.787	+/-	50.003
Zr	1.000	+/-	151.667
Y	1.000	+/-	40.421
Sr	197.248	+/-	13.174
Rb	1.000	+/-	87.784
Th	1.000	+/-	2339.923
Bi	1.000	+/-	1538.993
Au	1.000	+/-	49.857
As	16200.881	+/-	418.769
Se	27.972	+/-	19.980
Pb	77925.297	+/-	1484.671
Hg	1.000	+/-	30.859
Zn	149.805	+/-	16.968
Cu	841.017	+/-	46.404
Ni	144.742	+/-	47.878
Co	73.388	+/-	36.926
Fe	315.230	+/-	74.490
Mn	224.592	+/-	95.533
Cr	1.000	+/-	28.521
V	1.000	+/-	19.801
Ti	1.000	+/-	102.266
Ca	3952.005	+/-	158.125
K	811.906	+/-	145.669
Al	6059.922	+/-	1049.106
P	4613.755	+/-	239.360
Si	21801.789	+/-	781.921
Cl	4853.845	+/-	126.050
S	58702.207	+/-	1242.318
Mg	1.000	+/-	16992.229

mRFA -Ergebnisse

XL3t-69288

Reading No 7
 Mode Mining
 Time 2018-05-24 10:59
 Duration 121.63
 Units ppm
 Sigma Value 2
 Sequence Final
 Flags 3mm
 INV NR Gm873
 OBJEKT TAFELGEMAELEN
 MATERIAL HOLZ METALL FASSUNG
 ANALYSESTELLE P5 NIMBUS MARIA
 MESSAUFBAU STATIV
 FILTER m30lo30hi30li30
 User Login Raquet

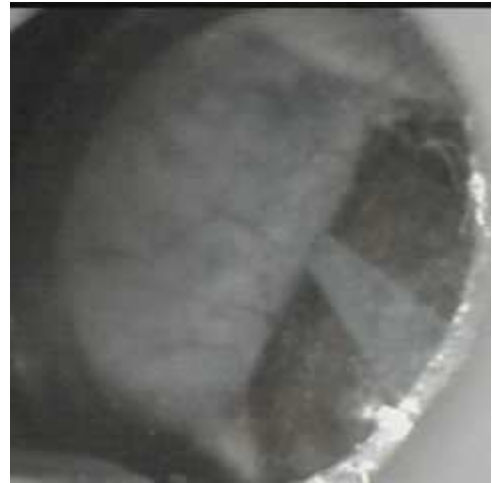


	ppm	+/-	Error
Ce	1.000	+/-	247.321
La	1.000	+/-	197.055
Ba	1.000	+/-	297.988
Sb	1.000	+/-	67.836
Sn	194.392	+/-	46.747
Cd	1.000	+/-	19.479
Ag	1.000	+/-	12.302
Bal	833164.000	+/-	2105.673
Nb	47.841	+/-	43.625
Zr	1.000	+/-	137.970
Y	1.000	+/-	35.883
Sr	258.138	+/-	16.437
Rb	1.000	+/-	89.373
Th	1.000	+/-	2128.222
Bi	1.000	+/-	1499.517
Au	256.729	+/-	76.138
As	10797.270	+/-	367.153
Se	1.000	+/-	31.771
Pb	51409.852	+/-	1197.140
Hg	1.000	+/-	41.829
Zn	152.864	+/-	24.152
Cu	530.475	+/-	47.456
Ni	57.940	+/-	52.024
Co	72.203	+/-	54.969
Fe	1026.407	+/-	123.699
Mn	178.713	+/-	121.452
Cr	1.000	+/-	38.439
V	1.000	+/-	24.817
Ti	1.000	+/-	118.030
Ca	10731.108	+/-	354.307
K	1106.918	+/-	184.657
Al	5142.386	+/-	1045.577
P	3683.392	+/-	249.222
Si	17616.676	+/-	852.288
Cl	6649.435	+/-	207.587
S	44599.961	+/-	1149.137
Mg	12323.348	+/-	10457.267

mRFA -Ergebnisse

XL3t-69288

Reading No 8
 Mode Mining
 Time 2018-05-24 11:03
 Duration 121.72
 Units ppm
 Sigma Value 2
 Sequence Final
 Flags
 INV NR Gm873
 OBJEKT TAFELGEMAELEN
 MATERIAL HOLZ METALL FASSUNG
 ANALYSESTELLE P6 HALS MARIA
 MESSAUFBAU STATIV
 FILTER m30lo30hi30li30
 User Login Raquet



	ppm	+/-	Error
Ce	-339.000	+/-	153.555
La	1.000	+/-	70.110
Ba	1.000	+/-	74.529
Sb	1.000	+/-	24.011
Sn	183.955	+/-	17.040
Cd	1.000	+/-	8.242
Ag	1.000	+/-	5.194
Bal	822146.313	+/-	1525.203
Nb	51.479	+/-	28.634
Zr	1.000	+/-	93.158
Y	1.000	+/-	23.674
Sr	181.187	+/-	10.347
Rb	1.000	+/-	50.866
Th	1.000	+/-	1280.877
Bi	1.000	+/-	1024.585
Au	1.000	+/-	42.390
As	9818.916	+/-	255.416
Se	1.000	+/-	24.673
Pb	42442.902	+/-	712.607
Hg	924.244	+/-	37.698
Zn	193.059	+/-	20.522
Cu	1174.039	+/-	49.587
Ni	51.433	+/-	40.251
Co	1.000	+/-	41.678
Fe	2367.433	+/-	120.236
Mn	200.010	+/-	86.460
Cr	1.000	+/-	37.811
V	1.000	+/-	26.280
Ti	1.000	+/-	116.297
Ca	9546.835	+/-	237.511
K	3100.477	+/-	187.248
Al	10872.075	+/-	954.651
P	4513.425	+/-	193.035
Si	48505.230	+/-	1120.643
Cl	4546.118	+/-	99.399
S	39180.863	+/-	712.096
Mg	1.000	+/-	7244.425