

mRFA -Ergebnisse

XL3t-69288

Reading No 1
Mode Mining
Time 2018-11-27 11:37
Duration 120.61
Units ppm
Sigma Value 2
Sequence Final
Flags
INV NR Gm40
OBJEKT TAFELGEMAELD
MATERIAL HOLZ METALL FASSUNG
ANALYSESTELLE P1 GRUNDIERRAND 1
MESSAUFBAU STATIV
FILTER m30lo30hi30li30
User Login Raquet



	ppm	+/-	Error
Ce	-339.000	+/-	114.721
La	1.000	+/-	52.587
Ba	179.230	+/-	59.201
Sb	1.000	+/-	18.528
Sn	92.061	+/-	11.957
Cd	1.000	+/-	6.324
Ag	1.000	+/-	4.042
Bal	868970.875	+/-	1016.736
Nb	1.000	+/-	21.312
Zr	1.000	+/-	55.007
Y	1.000	+/-	13.269
Sr	40.035	+/-	4.633
Rb	1.000	+/-	24.099
Th	1.000	+/-	774.008
Bi	1.000	+/-	673.818
Au	1.000	+/-	19.442
As	1175.964	+/-	125.505
Se	1.000	+/-	13.551
Pb	16519.713	+/-	257.777
Hg	1.000	+/-	11.759
Zn	1.000	+/-	34.081
Cu	77167.844	+/-	931.696
Ni	1.000	+/-	30.858
Co	1.000	+/-	34.855
Fe	2653.156	+/-	96.612
Mn	1.000	+/-	107.169
Cr	1.000	+/-	23.901
V	1.000	+/-	63.224
Ti	375.896	+/-	303.668
Ca	14117.193	+/-	241.690
K	1970.588	+/-	147.906
Al	974.755	+/-	377.954
P	859.717	+/-	62.266
Si	8093.794	+/-	282.548
Cl	736.954	+/-	21.671
S	6072.213	+/-	90.855
Mg	1.000	+/-	5760.022

mRFA -Ergebnisse

XL3t-69288

Reading No 2
Mode Mining
Time 2018-11-27 11:41
Duration 120.93
Units ppm
Sigma Value 2
Sequence Final
Flags
INV NR Gm40
OBJEKT TAFELGEMAELD
MATERIAL HOLZ METALL FASSUNG
ANALYSESTELLE P2 GRUNDIERRAND 2
MESSAUFBAU STATIV
FILTER m30lo30hi30li30
User Login Raquet

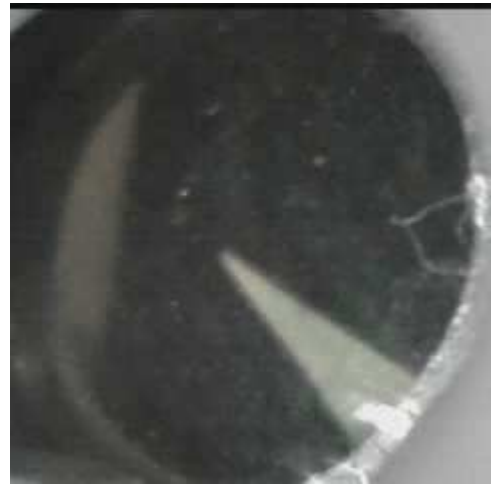


	ppm	+/-	Error
Ce	-339.000	+/-	66.663
La	1.000	+/-	30.351
Ba	1.000	+/-	32.565
Sb	12.639	+/-	11.885
Sn	46.342	+/-	6.924
Cd	9.738	+/-	4.591
Ag	4.529	+/-	3.007
Bal	919668.125	+/-	453.472
Nb	17.895	+/-	7.377
Zr	1.000	+/-	26.354
Y	1.000	+/-	5.986
Sr	31.234	+/-	2.426
Rb	1.000	+/-	14.743
Th	1.000	+/-	386.008
Bi	1.000	+/-	356.936
Au	1.000	+/-	10.043
As	2691.052	+/-	73.135
Se	1.000	+/-	9.319
Pb	9474.778	+/-	110.617
Hg	1.000	+/-	5.937
Zn	24.534	+/-	6.783
Cu	984.960	+/-	30.958
Ni	1.000	+/-	20.767
Co	1.000	+/-	17.696
Fe	439.107	+/-	44.629
Mn	1.000	+/-	47.416
Cr	1.000	+/-	16.069
V	1.000	+/-	13.809
Ti	1.000	+/-	58.762
Ca	35079.934	+/-	414.193
K	661.960	+/-	88.729
Al	1345.338	+/-	446.854
P	2237.550	+/-	116.601
Si	8551.982	+/-	361.318
Cl	1400.866	+/-	33.319
S	17317.404	+/-	215.356
Mg	1.000	+/-	8188.723

mRFA -Ergebnisse

XL3t-69288

Reading No 3
Mode Mining
Time 2018-11-27 11:45
Duration 121.36
Units ppm
Sigma Value 2
Sequence Final
Flags
INV NR Gm40
OBJEKT TAFELGEMAELD
MATERIAL HOLZ METALL FASSUNG
ANALYSESTELLE P3 HINTERGRUND 1
MESSAUFBAU STATIV
FILTER m30lo30hi30li30
User Login Raquet



	ppm	+/-	Error
Ce	-339.000	+/-	147.403
La	1.000	+/-	67.528
Ba	443.347	+/-	76.539
Sb	1.000	+/-	24.626
Sn	97.934	+/-	14.685
Cd	1.000	+/-	8.179
Ag	1.000	+/-	4.989
Bal	851014.938	+/-	1320.680
Nb	1.000	+/-	30.253
Zr	1.000	+/-	75.508
Y	1.000	+/-	18.830
Sr	88.147	+/-	6.907
Rb	1.000	+/-	34.475
Th	1.000	+/-	1067.968
Bi	1.000	+/-	917.118
Au	1.000	+/-	24.729
As	2655.795	+/-	174.860
Se	1.000	+/-	17.220
Pb	24583.512	+/-	427.888
Hg	1.000	+/-	14.555
Zn	1.000	+/-	40.166
Cu	92479.563	+/-	1216.399
Ni	1.000	+/-	35.487
Co	1.000	+/-	38.701
Fe	2986.747	+/-	108.912
Mn	121.123	+/-	81.763
Cr	1.000	+/-	28.021
V	1.000	+/-	87.404
Ti	487.795	+/-	348.362
Ca	3041.508	+/-	114.574
K	2336.637	+/-	171.108
Al	953.135	+/-	420.958
P	807.787	+/-	66.764
Si	9027.539	+/-	312.173
Cl	978.800	+/-	26.588
S	7895.776	+/-	126.229
Mg	1.000	+/-	5641.272

mRFA -Ergebnisse

XL3t-69288

Reading No 4
Mode Mining
Time 2018-11-27 11:49
Duration 121.71
Units ppm
Sigma Value 2
Sequence Final
Flags
INV NR Gm40
OBJEKT TAFELGEMAELD
MATERIAL HOLZ METALL FASSUNG
ANALYSESTELLE P4 HINTERGRUND 2
MESSAUFBAU STATIV
FILTER m30lo30hi30li30
User Login Raquet

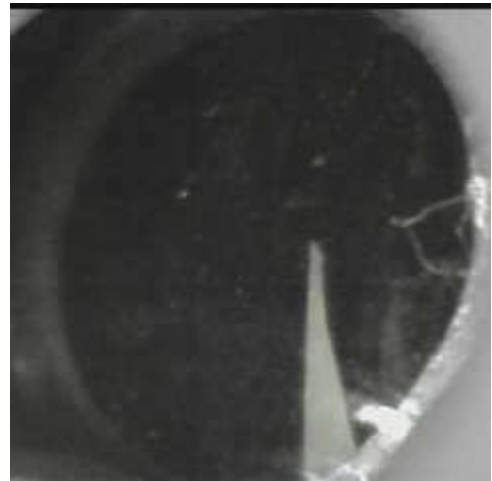


	ppm	+/-	Error
Ce	-339.000	+/-	190.239
La	1.000	+/-	112.025
Ba	266.667	+/-	80.398
Sb	1.000	+/-	36.412
Sn	124.789	+/-	16.150
Cd	1.000	+/-	8.476
Ag	1.000	+/-	5.341
Bal	824035.625	+/-	1680.255
Nb	35.171	+/-	29.351
Zr	1.000	+/-	100.752
Y	1.000	+/-	25.487
Sr	43.231	+/-	7.114
Rb	1.000	+/-	47.560
Th	1.000	+/-	1404.077
Bi	1.000	+/-	1241.579
Au	1.000	+/-	32.772
As	3624.695	+/-	226.909
Se	1.000	+/-	20.144
Pb	38904.086	+/-	702.626
Hg	1.000	+/-	19.354
Zn	1.000	+/-	41.747
Cu	94868.422	+/-	1328.571
Ni	1.000	+/-	38.353
Co	1.000	+/-	42.916
Fe	2206.055	+/-	98.892
Mn	1.000	+/-	108.461
Cr	1.000	+/-	24.801
V	1.000	+/-	39.900
Ti	1.000	+/-	326.057
Ca	4987.560	+/-	150.343
K	443.285	+/-	114.883
Al	3180.404	+/-	537.080
P	1186.491	+/-	82.488
Si	11472.318	+/-	370.244
Cl	1325.186	+/-	32.947
S	13296.019	+/-	218.488
Mg	1.000	+/-	7809.636

mRFA -Ergebnisse

XL3t-69288

Reading No 5
Mode Mining
Time 2018-11-27 11:54
Duration 122.11
Units ppm
Sigma Value 2
Sequence Final
Flags
INV NR Gm40
OBJEKT TAFELGEMAELD
MATERIAL HOLZ METALL FASSUNG
ANALYSESTELLE P5 GEWAND
MESSAUFBAU STATIV
FILTER m30lo30hi30li30
User Login Raquet



	ppm	+/-	Error
Ce	-339.000	+/-	79.394
La	1.000	+/-	36.506
Ba	1.000	+/-	39.165
Sb	1.000	+/-	19.789
Sn	87.374	+/-	8.745
Cd	13.623	+/-	5.483
Ag	1.000	+/-	4.284
Bal	880904.313	+/-	708.818
Nb	13.969	+/-	8.894
Zr	1.000	+/-	31.825
Y	1.000	+/-	7.334
Sr	119.506	+/-	4.348
Rb	1.000	+/-	16.523
Th	1.000	+/-	465.058
Bi	1.000	+/-	437.591
Au	1.000	+/-	12.085
As	3332.082	+/-	89.099
Se	1.000	+/-	8.771
Pb	11496.600	+/-	143.901
Hg	1.000	+/-	7.271
Zn	32.300	+/-	7.075
Cu	312.700	+/-	20.538
Ni	1.000	+/-	24.472
Co	1.000	+/-	19.317
Fe	377.287	+/-	47.276
Mn	1.000	+/-	56.632
Cr	20.347	+/-	15.938
V	1.000	+/-	21.024
Ti	1.000	+/-	70.390
Ca	56082.930	+/-	655.115
K	720.799	+/-	99.905
Al	1575.683	+/-	512.208
P	1649.819	+/-	118.722
Si	10318.805	+/-	391.796
Cl	2093.782	+/-	42.034
S	23117.561	+/-	288.204
Mg	7730.553	+/-	5797.008