

## mRFA -Ergebnisse

XL3t-69288

Reading No 42  
 Mode Mining  
 Time 2018-05-24 14:41  
 Duration 121.88  
 Units ppm  
 Sigma Value 2  
 Sequence Final  
 Flags 3mm  
 INV NR Gm30  
 OBJEKT TAFELGEMAELEN  
 MATERIAL HOLZ METALL FASSUNG  
 ANALYSESTELLE P1 NIMBUS CHRISTI  
 MESSAUFBAU STATIV  
 FILTER m30lo30hi30li30  
 User Login Raquet



	ppm	+/-	Error
Ce	1.000	+/-	431.722
La	1.000	+/-	334.209
Ba	1.000	+/-	361.805
Sb	1.000	+/-	73.817
Sn	428.529	+/-	71.650
Cd	1.000	+/-	24.973
Ag	1.000	+/-	15.472
Bal	789547.063	+/-	3187.537
Nb	1.000	+/-	113.249
Zr	1.000	+/-	209.659
Y	1.000	+/-	55.662
Sr	181.271	+/-	18.454
Rb	1.000	+/-	158.070
Th	1.000	+/-	3937.492
Bi	1.000	+/-	2191.889
Au	1.000	+/-	74.260
As	15416.654	+/-	562.934
Se	1.000	+/-	31.619
Pb	83268.758	+/-	2275.121
Hg	1.000	+/-	50.726
Zn	194.841	+/-	26.147
Cu	324.847	+/-	43.086
Ni	135.169	+/-	60.906
Co	132.020	+/-	56.611
Fe	171.308	+/-	97.120
Mn	252.537	+/-	135.479
Cr	1.000	+/-	52.492
V	1.000	+/-	26.998
Ti	1.000	+/-	124.349
Ca	3617.595	+/-	210.929
K	386.835	+/-	165.589
Al	4736.176	+/-	1118.229
P	5197.532	+/-	304.122
Si	18729.545	+/-	944.149
Cl	8163.032	+/-	302.329
S	57075.527	+/-	1838.509
Mg	12040.771	+/-	11563.908

## mRFA -Ergebnisse

XL3t-69288

Reading No 43  
 Mode Mining  
 Time 2018-05-24 14:45  
 Duration 121.41  
 Units ppm  
 Sigma Value 2  
 Sequence Final  
 Flags 3mm  
 INV NR Gm30  
 OBJEKT TAFELGEMAELENDE  
 MATERIAL HOLZ METALL FASSUNG  
 ANALYSESTELLE P2 ROTER RAHMEN  
 MESSAUFBAU STATIV  
 FILTER m30lo30hi30li30  
 User Login Raquet



	ppm	+/-	Error
Ce	1.000	+/-	221.532
La	1.000	+/-	190.155
Ba	1.000	+/-	183.125
Sb	1.000	+/-	57.945
Sn	42.410	+/-	39.435
Cd	1.000	+/-	20.684
Ag	1.000	+/-	12.124
Bal	777255.688	+/-	2611.916
Nb	1.000	+/-	20.833
Zr	1.000	+/-	75.744
Y	1.000	+/-	19.627
Sr	1.000	+/-	24.964
Rb	1.000	+/-	36.937
Th	1.000	+/-	1167.837
Bi	1.000	+/-	852.908
Au	1.000	+/-	159.677
As	3659.345	+/-	170.614
Se	33.194	+/-	23.710
Pb	12464.589	+/-	310.255
Hg	22623.443	+/-	478.001
Zn	952.771	+/-	90.590
Cu	137.995	+/-	34.752
Ni	96.023	+/-	62.668
Co	83.808	+/-	82.033
Fe	3172.590	+/-	217.794
Mn	455.644	+/-	161.087
Cr	1.000	+/-	41.298
V	1.000	+/-	50.971
Ti	1.000	+/-	153.383
Ca	22891.951	+/-	578.551
K	2141.950	+/-	240.229
Al	2536.947	+/-	1276.362
P	42247.125	+/-	920.270
Si	20192.637	+/-	1076.092
Cl	8408.010	+/-	223.050
S	80603.867	+/-	1554.947
Mg	1.000	+/-	14621.404

## mRFA -Ergebnisse

XL3t-69288

Reading No 44  
 Mode Mining  
 Time 2018-05-24 14:50  
 Duration 121.39  
 Units ppm  
 Sigma Value 2  
 Sequence Final  
 Flags 3mm  
 INV NR Gm30  
 OBJEKT TAFELGEMAELEN  
 MATERIAL HOLZ METALL FASSUNG  
 ANALYSESTELLE P3 INKARNAT MANN  
 MESSAUFBAU STATIV  
 FILTER m30lo30hi30li30  
 User Login Raquet



	ppm	+/-	Error
Ce	1.000	+/-	144.369
La	1.000	+/-	117.982
Ba	1.000	+/-	148.943
Sb	1.000	+/-	60.936
Sn	63.274	+/-	29.688
Cd	1.000	+/-	19.739
Ag	1.000	+/-	11.275
Bal	897780.313	+/-	1078.367
Nb	1.000	+/-	30.000
Zr	1.000	+/-	82.064
Y	1.000	+/-	20.203
Sr	175.468	+/-	11.107
Rb	1.000	+/-	50.055
Th	1.000	+/-	1323.258
Bi	1.000	+/-	922.836
Au	1.000	+/-	44.398
As	6363.534	+/-	220.085
Se	1.000	+/-	24.892
Pb	25821.869	+/-	555.031
Hg	846.144	+/-	42.286
Zn	154.695	+/-	24.210
Cu	2606.021	+/-	99.257
Ni	1.000	+/-	41.354
Co	1.000	+/-	35.201
Fe	426.731	+/-	83.154
Mn	1.000	+/-	116.069
Cr	34.696	+/-	28.270
V	1.000	+/-	19.076
Ti	1.000	+/-	88.706
Ca	5720.284	+/-	207.983
K	831.374	+/-	139.715
Al	2467.463	+/-	689.600
P	3949.286	+/-	214.586
Si	16237.561	+/-	739.843
Cl	4965.073	+/-	146.022
S	31556.277	+/-	752.901
Mg	1.000	+/-	7093.420

## mRFA -Ergebnisse

XL3t-69288

Reading No 45  
 Mode Mining  
 Time 2018-05-24 14:54  
 Duration 120.42  
 Units ppm  
 Sigma Value 2  
 Sequence Final  
 Flags 3mm  
 INV NR Gm30  
 OBJEKT TAFELGEMAELEN  
 MATERIAL HOLZ METALL FASSUNG  
 ANALYSESTELLE P4 AUGEN MARIA  
 MESSAUFBAU STATIV  
 FILTER m30lo30hi30li30  
 User Login Raquet



	ppm	+/-	Error
Ce	1.000	+/-	138.043
La	1.000	+/-	110.036
Ba	1.000	+/-	114.058
Sb	1.000	+/-	66.567
Sn	66.728	+/-	28.433
Cd	1.000	+/-	20.092
Ag	1.000	+/-	11.707
Bal	836178.188	+/-	1712.004
Nb	1.000	+/-	27.640
Zr	1.000	+/-	74.104
Y	1.000	+/-	18.163
Sr	211.628	+/-	11.232
Rb	1.000	+/-	40.013
Th	1.000	+/-	1021.637
Bi	1.000	+/-	918.865
Au	1241.723	+/-	74.082
As	3367.843	+/-	172.786
Se	1.000	+/-	18.326
Pb	18024.988	+/-	380.144
Hg	1.000	+/-	18.656
Zn	1.000	+/-	37.643
Cu	40622.059	+/-	779.523
Ni	1.000	+/-	39.050
Co	1.000	+/-	52.272
Fe	2614.425	+/-	149.835
Mn	99.083	+/-	96.102
Cr	1.000	+/-	29.161
V	1.000	+/-	23.563
Ti	145.672	+/-	115.475
Ca	30123.281	+/-	588.971
K	4226.685	+/-	246.731
Al	6548.516	+/-	927.387
P	2095.500	+/-	156.434
Si	31205.652	+/-	975.385
Cl	5941.968	+/-	137.519
S	17286.127	+/-	332.322
Mg	1.000	+/-	7445.829

## mRFA -Ergebnisse

XL3t-69288

Reading No 46  
 Mode Mining  
 Time 2018-05-24 14:59  
 Duration 120.53  
 Units ppm  
 Sigma Value 2  
 Sequence Final  
 Flags  
 INV NR Gm30  
 OBJEKT TAFELGEMAELEN  
 MATERIAL HOLZ METALL FASSUNG  
 ANALYSESTELLE P5 NIMBUS  
 MESSAUFBAU STATIV  
 FILTER m30lo30hi30li30  
 User Login Raquet

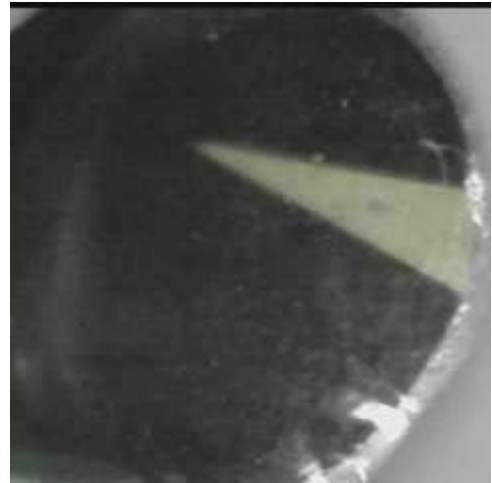


	ppm	+/-	Error
Ce	-339.000	+/-	103.434
La	1.000	+/-	47.395
Ba	1.000	+/-	50.577
Sb	1.000	+/-	21.676
Sn	360.264	+/-	15.731
Cd	15.529	+/-	6.832
Ag	1.000	+/-	6.115
Bal	853002.063	+/-	1051.585
Nb	1.000	+/-	28.658
Zr	1.000	+/-	63.192
Y	1.000	+/-	15.325
Sr	106.668	+/-	5.925
Rb	35.935	+/-	31.038
Th	1.000	+/-	1109.227
Bi	1.000	+/-	688.740
Au	1599.561	+/-	56.806
As	6632.653	+/-	178.474
Se	1.000	+/-	13.305
Pb	26510.137	+/-	433.109
Hg	1.000	+/-	13.017
Zn	87.886	+/-	14.401
Cu	2044.854	+/-	61.797
Ni	1.000	+/-	30.782
Co	1.000	+/-	54.481
Fe	8336.917	+/-	217.745
Mn	222.658	+/-	72.821
Cr	61.999	+/-	18.812
V	1.000	+/-	15.090
Ti	94.936	+/-	77.135
Ca	7219.155	+/-	177.302
K	1125.656	+/-	112.789
Al	5586.020	+/-	667.196
P	35698.945	+/-	654.430
Si	23947.447	+/-	696.459
Cl	3046.050	+/-	67.349
S	24264.654	+/-	437.045
Mg	1.000	+/-	5563.165

## mRFA -Ergebnisse

XL3t-69288

Reading No 47  
 Mode Mining  
 Time 2018-05-24 15:03  
 Duration 120.33  
 Units ppm  
 Sigma Value 2  
 Sequence Final  
 Flags  
 INV NR Gm30  
 OBJEKT TAFELGEMAELEN  
 MATERIAL HOLZ METALL FASSUNG  
 ANALYSESTELLE P6 GRABEINGANG  
 MESSAUFBAU STATIV  
 FILTER m30lo30hi30li30  
 User Login Raquet

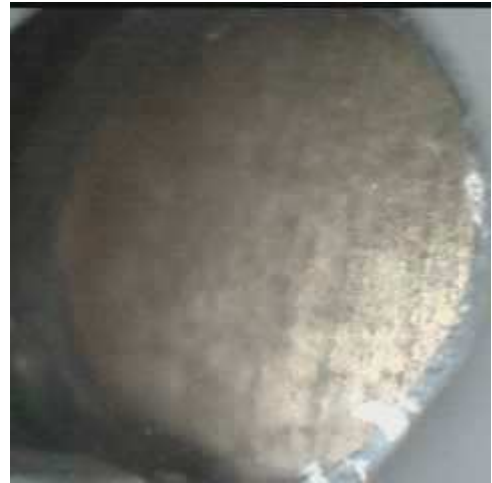


	ppm	+/-	Error
Ce	-339.000	+/-	78.648
La	1.000	+/-	36.015
Ba	1.000	+/-	38.757
Sb	1.000	+/-	19.746
Sn	45.612	+/-	8.065
Cd	12.614	+/-	5.465
Ag	6.240	+/-	3.594
Bal	886652.375	+/-	652.552
Nb	1.000	+/-	12.601
Zr	1.000	+/-	29.493
Y	1.000	+/-	6.710
Sr	238.355	+/-	5.835
Rb	1.000	+/-	17.638
Th	1.000	+/-	431.345
Bi	1.000	+/-	359.162
Au	1.000	+/-	10.889
As	3080.428	+/-	80.739
Se	1.000	+/-	7.996
Pb	9944.883	+/-	120.960
Hg	1.000	+/-	5.654
Zn	32.054	+/-	7.439
Cu	1177.716	+/-	35.762
Ni	1.000	+/-	23.432
Co	1.000	+/-	23.517
Fe	1238.077	+/-	65.990
Mn	191.112	+/-	60.970
Cr	20.313	+/-	17.581
V	1.000	+/-	13.756
Ti	159.306	+/-	75.687
Ca	44877.625	+/-	521.660
K	1792.249	+/-	119.720
Al	2162.672	+/-	588.906
P	1215.083	+/-	127.714
Si	22951.908	+/-	624.479
Cl	2253.474	+/-	47.203
S	21947.928	+/-	272.222
Mg	1.000	+/-	7280.104

## mRFA -Ergebnisse

XL3t-69288

Reading No 48  
 Mode Mining  
 Time 2018-05-24 15:07  
 Duration 120.85  
 Units ppm  
 Sigma Value 2  
 Sequence Final  
 Flags  
 INV NR Gm30  
 OBJEKT TAFELGEMAELEN  
 MATERIAL HOLZ METALL FASSUNG  
 ANALYSESTELLE P7 NIMBUS STIFTER  
 MESSAUFBAU STATIV  
 FILTER m30lo30hi30li30  
 User Login Raquet



	ppm	+/-	Error
Ce	-339.000	+/-	95.082
La	1.000	+/-	43.250
Ba	1.000	+/-	46.254
Sb	1.000	+/-	15.508
Sn	275.605	+/-	13.506
Cd	13.657	+/-	6.352
Ag	9.683	+/-	4.259
Bal	854422.313	+/-	990.391
Nb	17.825	+/-	15.350
Zr	1.000	+/-	53.257
Y	1.000	+/-	12.697
Sr	139.926	+/-	5.934
Rb	30.635	+/-	25.845
Th	1.000	+/-	826.484
Bi	1.000	+/-	585.776
Au	1975.366	+/-	57.629
As	5703.009	+/-	146.531
Se	1.000	+/-	12.285
Pb	21242.684	+/-	313.828
Hg	1.000	+/-	10.690
Zn	113.033	+/-	14.660
Cu	1534.289	+/-	48.664
Ni	1.000	+/-	29.438
Co	1.000	+/-	50.034
Fe	7557.378	+/-	189.903
Mn	74.023	+/-	64.341
Cr	80.883	+/-	18.812
V	1.000	+/-	21.013
Ti	151.055	+/-	85.297
Ca	5895.591	+/-	149.491
K	737.734	+/-	102.002
Al	4300.144	+/-	679.061
P	51319.500	+/-	807.056
Si	14445.844	+/-	585.202
Cl	2900.916	+/-	61.333
S	27058.980	+/-	432.968
Mg	1.000	+/-	9667.894