

mRFA -Ergebnisse

XL3t-69288

Reading No 6  
Mode Mining  
Time 2007-06-01 01:22  
Duration 120.94  
Units ppm  
Sigma Value 2  
Sequence Final  
Flags 3mm  
INV NR Gm1  
OBJEKT TAFELGEMAELENDE  
MATERIAL HOLZ METALL FASSUNG  
ANALYSESTELLE P1 ROTE RAHMUNG  
MESSAUFBAU STATIV  
FILTER m30lo30hi30li30  
User Login Raquet



|     | ppm        | +/- | Error     |
|-----|------------|-----|-----------|
| Ce  | 1.000      | +/- | 129.415   |
| La  | 1.000      | +/- | 105.989   |
| Ba  | 1.000      | +/- | 113.365   |
| Sb  | 1.000      | +/- | 39.097    |
| Sn  | 1.000      | +/- | 26.893    |
| Cd  | 1.000      | +/- | 13.798    |
| Ag  | 1.000      | +/- | 8.363     |
| Bal | 764302.438 | +/- | 2262.592  |
| Nb  | 1.000      | +/- | 4.399     |
| Zr  | 1.000      | +/- | 15.131    |
| Y   | 1.000      | +/- | 3.811     |
| Sr  | 253.507    | +/- | 14.883    |
| Rb  | 1.000      | +/- | 8.751     |
| Th  | 1.000      | +/- | 262.913   |
| Bi  | 1.000      | +/- | 174.849   |
| Au  | 1278.865   | +/- | 99.401    |
| As  | 65.084     | +/- | 25.557    |
| Se  | 1.000      | +/- | 9.746     |
| Pb  | 233.873    | +/- | 24.195    |
| Hg  | 6954.186   | +/- | 123.999   |
| Zn  | 462.265    | +/- | 52.902    |
| Cu  | 146.635    | +/- | 29.888    |
| Ni  | 1.000      | +/- | 46.012    |
| Co  | 1.000      | +/- | 54.850    |
| Fe  | 1761.658   | +/- | 145.775   |
| Mn  | 1.000      | +/- | 120.785   |
| Cr  | 1.000      | +/- | 47.986    |
| V   | 1.000      | +/- | 41.289    |
| Ti  | 1.000      | +/- | 140.791   |
| Ca  | 107964.055 | +/- | 1334.100  |
| K   | 683.793    | +/- | 174.465   |
| Al  | 2649.688   | +/- | 1137.799  |
| P   | 37986.762  | +/- | 597.446   |
| Si  | 17670.225  | +/- | 910.015   |
| Cl  | 666.604    | +/- | 53.721    |
| S   | 56920.352  | +/- | 656.457   |
| Mg  | 1.000      | +/- | 11885.576 |

mRFA -Ergebnisse

XL3t-69288

Reading No 7  
Mode Mining  
Time 2007-06-01 01:26  
Duration 121.20  
Units ppm  
Sigma Value 2  
Sequence Final  
Flags 3mm  
INV NR Gm1  
OBJEKT TAFELGEMAELENDE  
MATERIAL HOLZ METALL FASSUNG  
ANALYSESTELLE P2 STAB  
MESSAUFBAU STATIV  
FILTER m30lo30hi30li30  
User Login Raquet



|     | ppm        | +/- | Error     |
|-----|------------|-----|-----------|
| Ce  | 1.000      | +/- | 126.926   |
| La  | 1.000      | +/- | 104.346   |
| Ba  | 1.000      | +/- | 110.226   |
| Sb  | 1.000      | +/- | 44.167    |
| Sn  | 1.000      | +/- | 34.108    |
| Cd  | 32.027     | +/- | 16.411    |
| Ag  | 17.638     | +/- | 10.862    |
| Bal | 764266.750 | +/- | 2239.783  |
| Nb  | 1.000      | +/- | 6.633     |
| Zr  | 1.000      | +/- | 25.098    |
| Y   | 1.000      | +/- | 5.563     |
| Sr  | 308.062    | +/- | 12.096    |
| Rb  | 31.314     | +/- | 15.453    |
| Th  | 1.000      | +/- | 356.919   |
| Bi  | 1.000      | +/- | 294.884   |
| Au  | 7005.347   | +/- | 165.844   |
| As  | 440.978    | +/- | 51.008    |
| Se  | 1.000      | +/- | 17.052    |
| Pb  | 1609.752   | +/- | 53.976    |
| Hg  | 1.000      | +/- | 14.662    |
| Zn  | 228.809    | +/- | 37.285    |
| Cu  | 285.082    | +/- | 36.387    |
| Ni  | 1.000      | +/- | 41.601    |
| Co  | 1.000      | +/- | 78.121    |
| Fe  | 6074.276   | +/- | 250.241   |
| Mn  | 1.000      | +/- | 117.845   |
| Cr  | 153.795    | +/- | 31.133    |
| V   | 30.456     | +/- | 29.703    |
| Ti  | 539.949    | +/- | 153.802   |
| Ca  | 138203.234 | +/- | 1655.063  |
| K   | 1575.275   | +/- | 202.396   |
| Al  | 4766.444   | +/- | 1266.480  |
| P   | 44363.918  | +/- | 653.338   |
| Si  | 13427.522  | +/- | 860.940   |
| Cl  | 346.829    | +/- | 61.287    |
| S   | 16292.611  | +/- | 247.220   |
| Mg  | 1.000      | +/- | 11511.490 |

mRFA -Ergebnisse

XL3t-69288

Reading No 8  
Mode Mining  
Time 2007-06-01 01:32  
Duration 122.15  
Units ppm  
Sigma Value 2  
Sequence Final  
Flags 3mm  
INV NR Gm1  
OBJEKT TAFELGEMAELENDE  
MATERIAL HOLZ METALL FASSUNG  
ANALYSESTELLE P3 HELM  
MESSAUFBAU STATIV  
FILTER m30lo30hi30li30  
User Login Raquet



|     | ppm        | +/- | Error     |
|-----|------------|-----|-----------|
| Ce  | 1.000      | +/- | 115.883   |
| La  | 1.000      | +/- | 94.772    |
| Ba  | 1.000      | +/- | 101.219   |
| Sb  | 1.000      | +/- | 51.615    |
| Sn  | 1.000      | +/- | 30.170    |
| Cd  | 1.000      | +/- | 13.926    |
| Ag  | 1.000      | +/- | 8.851     |
| Bal | 861922.250 | +/- | 1342.019  |
| Nb  | 1.000      | +/- | 10.855    |
| Zr  | 1.000      | +/- | 41.451    |
| Y   | 1.000      | +/- | 9.722     |
| Sr  | 196.838    | +/- | 9.254     |
| Rb  | 1.000      | +/- | 31.752    |
| Th  | 1.000      | +/- | 581.194   |
| Bi  | 1.000      | +/- | 484.734   |
| Au  | 2197.891   | +/- | 83.537    |
| As  | 1670.247   | +/- | 98.954    |
| Se  | 1.000      | +/- | 13.748    |
| Pb  | 6943.427   | +/- | 140.710   |
| Hg  | 1.000      | +/- | 12.733    |
| Zn  | 1.000      | +/- | 43.429    |
| Cu  | 30793.221  | +/- | 517.802   |
| Ni  | 1.000      | +/- | 34.706    |
| Co  | 1.000      | +/- | 40.688    |
| Fe  | 1250.163   | +/- | 104.892   |
| Mn  | 1.000      | +/- | 86.677    |
| Cr  | 1.000      | +/- | 31.935    |
| V   | 1.000      | +/- | 25.749    |
| Ti  | 225.969    | +/- | 113.806   |
| Ca  | 62034.746  | +/- | 897.611   |
| K   | 635.618    | +/- | 142.121   |
| Al  | 1401.592   | +/- | 629.530   |
| P   | 7355.210   | +/- | 214.668   |
| Si  | 8154.527   | +/- | 491.371   |
| Cl  | 2525.338   | +/- | 69.186    |
| S   | 12692.931  | +/- | 211.980   |
| Mg  | 1.000      | +/- | 10181.156 |

mRFA -Ergebnisse

XL3t-69288

Reading No 9  
Mode Mining  
Time 2007-06-01 01:36  
Duration 120.88  
Units ppm  
Sigma Value 2  
Sequence Final  
Flags 3mm  
INV NR Gm1  
OBJEKT TAFELGEMAELEN  
MATERIAL HOLZ METALL FASSUNG  
ANALYSESTELLE P4 GEWAND JOHANNES  
MESSAUFBAU STATIV  
FILTER m30lo30hi30li30  
User Login Raquet

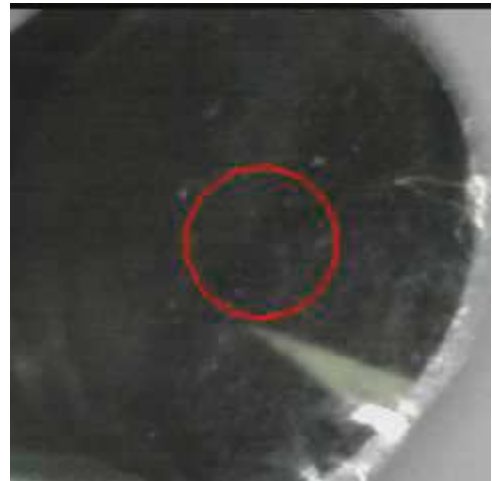


|     | ppm        | +/- | Error    |
|-----|------------|-----|----------|
| Ce  | 1.000      | +/- | 111.857  |
| La  | 1.000      | +/- | 91.110   |
| Ba  | 1.000      | +/- | 95.929   |
| Sb  | 1.000      | +/- | 37.588   |
| Sn  | 1.000      | +/- | 20.152   |
| Cd  | 16.576     | +/- | 13.381   |
| Ag  | 1.000      | +/- | 7.095    |
| Bal | 864168.938 | +/- | 1276.533 |
| Nb  | 1.000      | +/- | 9.902    |
| Zr  | 1.000      | +/- | 38.284   |
| Y   | 1.000      | +/- | 9.092    |
| Sr  | 132.137    | +/- | 10.703   |
| Rb  | 1.000      | +/- | 17.171   |
| Th  | 1.000      | +/- | 535.727  |
| Bi  | 1.000      | +/- | 446.505  |
| Au  | 1.000      | +/- | 59.108   |
| As  | 1597.495   | +/- | 90.240   |
| Se  | 1.000      | +/- | 14.532   |
| Pb  | 6363.748   | +/- | 126.434  |
| Hg  | 4667.284   | +/- | 92.037   |
| Zn  | 284.580    | +/- | 42.378   |
| Cu  | 22413.225  | +/- | 378.130  |
| Ni  | 1.000      | +/- | 36.121   |
| Co  | 1.000      | +/- | 49.231   |
| Fe  | 781.573    | +/- | 89.089   |
| Mn  | 1.000      | +/- | 110.830  |
| Cr  | 1.000      | +/- | 25.964   |
| V   | 1.000      | +/- | 34.571   |
| Ti  | 279.220    | +/- | 125.827  |
| Ca  | 46268.973  | +/- | 687.829  |
| K   | 4234.444   | +/- | 225.218  |
| Al  | 10092.444  | +/- | 970.012  |
| P   | 3357.132   | +/- | 157.829  |
| Si  | 18881.434  | +/- | 678.583  |
| Cl  | 3133.731   | +/- | 76.672   |
| S   | 13327.107  | +/- | 213.411  |
| Mg  | 1.000      | +/- | 8887.203 |

mRFA -Ergebnisse

XL3t-69288

Reading No 10  
Mode Mining  
Time 2007-06-01 01:40  
Duration 120.05  
Units ppm  
Sigma Value 2  
Sequence Final  
Flags 3mm  
INV NR Gm1  
OBJEKT TAFELGEMAELENDE  
MATERIAL HOLZ METALL FASSUNG  
ANALYSESTELLE P5 KLEID MARIA  
MESSAUFBAU STATIV  
FILTER m30lo30hi30li30  
User Login Raquet

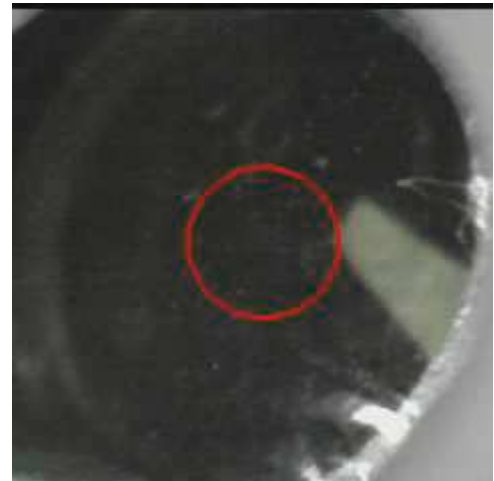


|     | ppm        | +/- | Error    |
|-----|------------|-----|----------|
| Ce  | 1.000      | +/- | 210.661  |
| La  | 1.000      | +/- | 170.990  |
| Ba  | 1.000      | +/- | 180.654  |
| Sb  | 1.000      | +/- | 60.803   |
| Sn  | 1.000      | +/- | 47.846   |
| Cd  | 1.000      | +/- | 20.796   |
| Ag  | 1.000      | +/- | 12.720   |
| Bal | 782997.688 | +/- | 2852.877 |
| Nb  | 1.000      | +/- | 27.038   |
| Zr  | 1.000      | +/- | 100.459  |
| Y   | 1.000      | +/- | 25.337   |
| Sr  | 79.051     | +/- | 12.379   |
| Rb  | 1.000      | +/- | 48.807   |
| Th  | 1.000      | +/- | 1381.651 |
| Bi  | 1.000      | +/- | 1214.904 |
| Au  | 1.000      | +/- | 65.761   |
| As  | 2661.232   | +/- | 218.518  |
| Se  | 1.000      | +/- | 24.325   |
| Pb  | 20191.410  | +/- | 502.861  |
| Hg  | 1823.118   | +/- | 74.598   |
| Zn  | 334.689    | +/- | 80.276   |
| Cu  | 140393.922 | +/- | 2394.462 |
| Ni  | 54.038     | +/- | 53.801   |
| Co  | 157.158    | +/- | 53.861   |
| Fe  | 913.135    | +/- | 93.787   |
| Mn  | 131.487    | +/- | 91.132   |
| Cr  | 1.000      | +/- | 29.942   |
| V   | 1.000      | +/- | 29.489   |
| Ti  | 1.000      | +/- | 195.870  |
| Ca  | 26137.738  | +/- | 512.138  |
| K   | 1093.750   | +/- | 164.319  |
| Al  | 2531.811   | +/- | 836.672  |
| P   | 1307.008   | +/- | 120.780  |
| Si  | 7460.441   | +/- | 467.147  |
| Cl  | 2458.444   | +/- | 75.309   |
| S   | 9273.837   | +/- | 193.782  |
| Mg  | 1.000      | +/- | 8603.353 |

mRFA -Ergebnisse

XL3t-69288

Reading No 11  
Mode Mining  
Time 2007-06-01 01:44  
Duration 121.69  
Units ppm  
Sigma Value 2  
Sequence Final  
Flags 3mm  
INV NR Gm1  
OBJEKT TAFELGEMAELEN  
MATERIAL HOLZ METALL FASSUNG  
ANALYSESTELLE P6 SCHUH  
MESSAUFBAU STATIV  
FILTER m30lo30hi30li30  
User Login Raquet



|     | ppm        | +/- | Error    |
|-----|------------|-----|----------|
| Ce  | 1.000      | +/- | 212.576  |
| La  | 1.000      | +/- | 186.746  |
| Ba  | 1.000      | +/- | 159.209  |
| Sb  | 1.000      | +/- | 63.112   |
| Sn  | 1.000      | +/- | 45.600   |
| Cd  | 1.000      | +/- | 26.794   |
| Ag  | 1.000      | +/- | 12.187   |
| Bal | 874862.500 | +/- | 1513.799 |
| Nb  | 1.000      | +/- | 44.838   |
| Zr  | 1.000      | +/- | 104.076  |
| Y   | 1.000      | +/- | 25.931   |
| Sr  | 155.544    | +/- | 11.316   |
| Rb  | 1.000      | +/- | 58.075   |
| Th  | 1.000      | +/- | 1483.765 |
| Bi  | 1.000      | +/- | 1168.259 |
| Au  | 1.000      | +/- | 38.385   |
| As  | 5811.037   | +/- | 254.354  |
| Se  | 1.000      | +/- | 22.444   |
| Pb  | 30506.861  | +/- | 703.791  |
| Hg  | 1.000      | +/- | 22.250   |
| Zn  | 1.000      | +/- | 57.419   |
| Cu  | 31632.834  | +/- | 709.846  |
| Ni  | 1.000      | +/- | 42.951   |
| Co  | 1.000      | +/- | 50.609   |
| Fe  | 1455.312   | +/- | 127.787  |
| Mn  | 1.000      | +/- | 110.391  |
| Cr  | 1.000      | +/- | 33.009   |
| V   | 1.000      | +/- | 31.033   |
| Ti  | 224.036    | +/- | 135.376  |
| Ca  | 14136.141  | +/- | 388.094  |
| K   | 1029.186   | +/- | 173.514  |
| Al  | 2513.544   | +/- | 770.037  |
| P   | 1402.998   | +/- | 153.140  |
| Si  | 17592.711  | +/- | 799.960  |
| Cl  | 2633.471   | +/- | 93.059   |
| S   | 16043.729  | +/- | 380.536  |
| Mg  | 1.000      | +/- | 9607.936 |

mRFA -Ergebnisse

XL3t-69288

Reading No 12  
Mode Mining  
Time 2007-06-01 01:50  
Duration 120.33  
Units ppm  
Sigma Value 2  
Sequence Final  
Flags 3mm  
INV NR Gm1  
OBJEKT TAFELGEMAELENDE  
MATERIAL HOLZ METALL FASSUNG  
ANALYSESTELLE P7 FUSSBODEN UNTERZEICHNUNG  
MESSAUFBAU STATIV  
FILTER m30lo30hi30li30  
User Login Raquet



|     | ppm        | +/- | Error    |
|-----|------------|-----|----------|
| Ce  | 1.000      | +/- | 129.456  |
| La  | 1.000      | +/- | 105.071  |
| Ba  | 1.000      | +/- | 111.516  |
| Sb  | 1.000      | +/- | 39.008   |
| Sn  | 41.304     | +/- | 26.408   |
| Cd  | 1.000      | +/- | 20.303   |
| Ag  | 1.000      | +/- | 8.600    |
| Bal | 882708.563 | +/- | 1198.649 |
| Nb  | 1.000      | +/- | 30.771   |
| Zr  | 1.000      | +/- | 73.127   |
| Y   | 1.000      | +/- | 17.705   |
| Sr  | 121.586    | +/- | 8.099    |
| Rb  | 1.000      | +/- | 42.414   |
| Th  | 1.000      | +/- | 999.299  |
| Bi  | 1.000      | +/- | 834.341  |
| Au  | 1.000      | +/- | 28.000   |
| As  | 5227.312   | +/- | 188.719  |
| Se  | 1.000      | +/- | 21.464   |
| Pb  | 21443.332  | +/- | 429.985  |
| Hg  | 1.000      | +/- | 16.220   |
| Zn  | 61.298     | +/- | 12.985   |
| Cu  | 839.551    | +/- | 51.974   |
| Ni  | 1.000      | +/- | 36.958   |
| Co  | 1.000      | +/- | 59.395   |
| Fe  | 3817.791   | +/- | 190.993  |
| Mn  | 1.000      | +/- | 95.722   |
| Cr  | 31.014     | +/- | 27.529   |
| V   | 1.000      | +/- | 26.472   |
| Ti  | 478.618    | +/- | 129.021  |
| Ca  | 12596.318  | +/- | 335.153  |
| K   | 860.723    | +/- | 143.919  |
| Al  | 6267.965   | +/- | 852.391  |
| P   | 2069.903   | +/- | 177.473  |
| Si  | 32754.588  | +/- | 1074.542 |
| Cl  | 3145.010   | +/- | 97.167   |
| S   | 27534.953  | +/- | 593.135  |
| Mg  | 1.000      | +/- | 6897.285 |

mRFA -Ergebnisse

XL3t-69288

Reading No 13  
Mode Mining  
Time 2007-06-01 01:55  
Duration 121.18  
Units ppm  
Sigma Value 2  
Sequence Final  
Flags 3mm  
INV NR Gm1  
OBJEKT TAFELGEMAELENDE  
MATERIAL HOLZ METALL FASSUNG  
ANALYSESTELLE P8 INKARNAT UNTERZEICHNUNG  
MESSAUFBAU STATIV  
FILTER m30lo30hi30li30  
User Login Raquet



|     | ppm        | +/- | Error     |
|-----|------------|-----|-----------|
| Ce  | 1.000      | +/- | 202.626   |
| La  | 1.000      | +/- | 165.005   |
| Ba  | 1.000      | +/- | 172.925   |
| Sb  | 1.000      | +/- | 57.683    |
| Sn  | 1.000      | +/- | 63.649    |
| Cd  | 1.000      | +/- | 18.977    |
| Ag  | 1.000      | +/- | 12.074    |
| Bal | 864995.500 | +/- | 1686.136  |
| Nb  | 50.856     | +/- | 41.305    |
| Zr  | 1.000      | +/- | 131.167   |
| Y   | 1.000      | +/- | 33.944    |
| Sr  | 112.390    | +/- | 11.147    |
| Rb  | 1.000      | +/- | 84.493    |
| Th  | 1.000      | +/- | 1969.403  |
| Bi  | 1.000      | +/- | 1425.652  |
| Au  | 1.000      | +/- | 46.661    |
| As  | 9540.648   | +/- | 335.298   |
| Se  | 1.000      | +/- | 30.204    |
| Pb  | 49214.438  | +/- | 1125.566  |
| Hg  | 1.000      | +/- | 28.727    |
| Zn  | 96.563     | +/- | 17.809    |
| Cu  | 1680.551   | +/- | 82.551    |
| Ni  | 1.000      | +/- | 46.397    |
| Co  | 50.776     | +/- | 44.165    |
| Fe  | 159.426    | +/- | 81.509    |
| Mn  | 141.224    | +/- | 113.768   |
| Cr  | 1.000      | +/- | 37.835    |
| V   | 1.000      | +/- | 24.305    |
| Ti  | 1.000      | +/- | 112.898   |
| Ca  | 5106.926   | +/- | 220.865   |
| K   | 161.783    | +/- | 140.611   |
| Al  | 2523.572   | +/- | 849.264   |
| P   | 4346.687   | +/- | 256.041   |
| Si  | 14031.336  | +/- | 749.244   |
| Cl  | 4855.759   | +/- | 158.624   |
| S   | 42931.590  | +/- | 1098.350  |
| Mg  | 1.000      | +/- | 14785.924 |



mRFA -Ergebnisse

XL3t-69288

Reading No 14  
Mode Mining  
Time 2007-06-01 02:01  
Duration 121.07  
Units ppm  
Sigma Value 2  
Sequence Final  
Flags 3mm  
INV NR Gm1  
OBJEKT TAFELGEMAELENDE  
MATERIAL HOLZ METALL FASSUNG  
ANALYSESTELLE P9 SCHWERT SCHEIDE  
MESSAUFBAU STATIV  
FILTER m30lo30hi30li30  
User Login Raquet



|     | ppm        | +/- | Error    |
|-----|------------|-----|----------|
| Ce  | 1.000      | +/- | 130.197  |
| La  | 1.000      | +/- | 107.794  |
| Ba  | 1.000      | +/- | 112.159  |
| Sb  | 1.000      | +/- | 38.707   |
| Sn  | 1.000      | +/- | 23.780   |
| Cd  | 1.000      | +/- | 13.543   |
| Ag  | 1.000      | +/- | 8.311    |
| Bal | 907895.500 | +/- | 961.900  |
| Nb  | 1.000      | +/- | 20.532   |
| Zr  | 1.000      | +/- | 59.416   |
| Y   | 1.000      | +/- | 14.244   |
| Sr  | 146.563    | +/- | 8.471    |
| Rb  | 1.000      | +/- | 28.541   |
| Th  | 1.000      | +/- | 821.400  |
| Bi  | 1.000      | +/- | 714.071  |
| Au  | 1.000      | +/- | 22.658   |
| As  | 3312.096   | +/- | 147.833  |
| Se  | 1.000      | +/- | 16.495   |
| Pb  | 14188.254  | +/- | 286.358  |
| Hg  | 1.000      | +/- | 14.223   |
| Zn  | 1.000      | +/- | 24.400   |
| Cu  | 14287.195  | +/- | 325.171  |
| Ni  | 1.000      | +/- | 35.415   |
| Co  | 1.000      | +/- | 36.485   |
| Fe  | 400.833    | +/- | 78.319   |
| Mn  | 1.000      | +/- | 91.606   |
| Cr  | 1.000      | +/- | 26.324   |
| V   | 1.000      | +/- | 21.346   |
| Ti  | 1.000      | +/- | 106.800  |
| Ca  | 19175.916  | +/- | 438.375  |
| K   | 2652.787   | +/- | 206.668  |
| Al  | 3723.206   | +/- | 719.152  |
| P   | 2024.232   | +/- | 158.672  |
| Si  | 10595.043  | +/- | 574.227  |
| Cl  | 2469.522   | +/- | 80.179   |
| S   | 19128.750  | +/- | 392.788  |
| Mg  | 1.000      | +/- | 8049.172 |

mRFA -Ergebnisse

XL3t-69288

Reading No 15  
Mode Mining  
Time 2007-06-01 02:05  
Duration 120.27  
Units ppm  
Sigma Value 2  
Sequence Final  
Flags 3mm  
INV NR Gm1  
OBJEKT TAFELGEMAELEN  
MATERIAL HOLZ METALL FASSUNG  
ANALYSESTELLE P10 HINTERGRUND  
MESSAUFBAU STATIV  
FILTER m30lo30hi30li30  
User Login Raquet



|     | ppm        | +/- | Error     |
|-----|------------|-----|-----------|
| Ce  | 1.000      | +/- | 267.253   |
| La  | 1.000      | +/- | 219.134   |
| Ba  | 1225.874   | +/- | 274.505   |
| Sb  | 1.000      | +/- | 75.842    |
| Sn  | 1.000      | +/- | 65.898    |
| Cd  | 1.000      | +/- | 27.918    |
| Ag  | 1.000      | +/- | 17.614    |
| Bal | 567872.688 | +/- | 7202.586  |
| Nb  | 1.000      | +/- | 46.389    |
| Zr  | 1.000      | +/- | 129.979   |
| Y   | 1.000      | +/- | 30.216    |
| Sr  | 282.063    | +/- | 22.980    |
| Rb  | 1.000      | +/- | 54.382    |
| Th  | 1.000      | +/- | 1664.781  |
| Bi  | 1.000      | +/- | 1584.279  |
| Au  | 137.064    | +/- | 56.055    |
| As  | 1.000      | +/- | 239.444   |
| Se  | 1.000      | +/- | 32.330    |
| Pb  | 14008.389  | +/- | 489.785   |
| Hg  | 109.126    | +/- | 27.180    |
| Zn  | 11129.708  | +/- | 442.311   |
| Cu  | 172.300    | +/- | 63.020    |
| Ni  | 1.000      | +/- | 115.494   |
| Co  | 895.126    | +/- | 633.941   |
| Fe  | 250546.563 | +/- | 5244.848  |
| Mn  | 1.000      | +/- | 500.775   |
| Cr  | 172.529    | +/- | 154.940   |
| V   | 1.000      | +/- | 384.969   |
| Ti  | 36524.359  | +/- | 1808.670  |
| Ca  | 65440.289  | +/- | 1200.555  |
| K   | 2227.224   | +/- | 398.722   |
| Al  | 9060.514   | +/- | 2115.688  |
| P   | 1.000      | +/- | 168.619   |
| Si  | 21729.215  | +/- | 1029.497  |
| Cl  | 3115.889   | +/- | 111.874   |
| S   | 15351.162  | +/- | 328.159   |
| Mg  | 1.000      | +/- | 18947.131 |

mRFA -Ergebnisse

XL3t-69288

Reading No 16  
Mode Mining  
Time 2007-06-01 02:11  
Duration 120.45  
Units ppm  
Sigma Value 2  
Sequence Final  
Flags 3mm  
INV NR Gm1  
OBJEKT TAFELGEMAELEN  
MATERIAL HOLZ METALL FASSUNG  
ANALYSESTELLE P11 ROTE RAHMUNG 2  
MESSAUFBAU STATIV  
FILTER m30lo30hi30li30  
User Login Raquet



|     | ppm        | +/- | Error    |
|-----|------------|-----|----------|
| Ce  | 1.000      | +/- | 96.519   |
| La  | 1.000      | +/- | 80.553   |
| Ba  | 1.000      | +/- | 84.710   |
| Sb  | 1.000      | +/- | 36.476   |
| Sn  | 1.000      | +/- | 18.754   |
| Cd  | 27.155     | +/- | 13.129   |
| Ag  | 17.440     | +/- | 8.895    |
| Bal | 755637.750 | +/- | 2122.084 |
| Nb  | 1.000      | +/- | 3.359    |
| Zr  | 1.000      | +/- | 10.199   |
| Y   | 1.000      | +/- | 2.126    |
| Sr  | 220.142    | +/- | 8.878    |
| Rb  | 1.000      | +/- | 9.776    |
| Th  | 1.000      | +/- | 140.495  |
| Bi  | 1.000      | +/- | 117.765  |
| Au  | 1866.742   | +/- | 69.567   |
| As  | 28.883     | +/- | 14.375   |
| Se  | 1.000      | +/- | 8.154    |
| Pb  | 119.716    | +/- | 13.823   |
| Hg  | 156.766    | +/- | 13.530   |
| Zn  | 86.065     | +/- | 21.229   |
| Cu  | 113.293    | +/- | 24.632   |
| Ni  | 1.000      | +/- | 31.908   |
| Co  | 1.000      | +/- | 49.616   |
| Fe  | 2334.406   | +/- | 146.351  |
| Mn  | 1.000      | +/- | 100.215  |
| Cr  | 71.839     | +/- | 29.948   |
| V   | 1.000      | +/- | 69.216   |
| Ti  | 349.305    | +/- | 263.556  |
| Ca  | 161176.609 | +/- | 1578.708 |
| K   | 1830.713   | +/- | 197.611  |
| Al  | 15966.780  | +/- | 1505.159 |
| P   | 17873.658  | +/- | 347.631  |
| Si  | 33642.816  | +/- | 1018.943 |
| Cl  | 321.717    | +/- | 43.784   |
| S   | 8158.152   | +/- | 138.453  |
| Mg  | 1.000      | +/- | 9535.502 |