

mRFA -Ergebnisse

XL3t-69288

Reading No 1
 Mode Mining
 Time 2018-06-21 14:01
 Duration 122.02
 Units ppm
 Sigma Value 2
 Sequence Final
 Flags 3mm
 INV NR Gm32
 OBJEKT TAFELGEMAELEN
 MATERIAL HOLZ METALL FASSUNG
 ANALYSESTELLE P1 BEKROENUNG THRON
 MESSAUFBAU STATIV
 FILTER m30lo30hi30li30
 User Login Raquet



	ppm	+/-	Error
Ce	1.000	+/-	125.037
La	1.000	+/-	102.564
Ba	1.000	+/-	107.440
Sb	58.292	+/-	39.785
Sn	1022.712	+/-	62.630
Cd	1.000	+/-	23.168
Ag	15.058	+/-	10.376
Bal	903025.375	+/-	1059.532
Nb	1.000	+/-	34.050
Zr	1.000	+/-	75.063
Y	1.000	+/-	18.457
Sr	106.296	+/-	8.057
Rb	1.000	+/-	43.504
Th	1.000	+/-	1025.985
Bi	1.000	+/-	854.205
Au	954.911	+/-	65.034
As	4566.577	+/-	185.942
Se	1.000	+/-	16.824
Pb	20970.314	+/-	430.163
Hg	1.000	+/-	17.489
Zn	271.206	+/-	29.873
Cu	5494.255	+/-	164.285
Ni	1.000	+/-	38.456
Co	1.000	+/-	92.875
Fe	11217.041	+/-	356.422
Mn	204.060	+/-	103.493
Cr	1.000	+/-	51.892
V	1.000	+/-	26.984
Ti	1.000	+/-	185.201
Ca	22292.598	+/-	516.970
K	3375.292	+/-	244.454
Al	739.367	+/-	557.195
P	1161.751	+/-	122.894
Si	10758.474	+/-	566.693
Cl	3495.515	+/-	101.202
S	10270.952	+/-	232.957
Mg	1.000	+/-	5879.265

mRFA -Ergebnisse

XL3t-69288

Reading No 2
 Mode Mining
 Time 2018-06-21 14:06
 Duration 120.99
 Units ppm
 Sigma Value 2
 Sequence Final
 Flags 3mm
 INV NR Gm32
 OBJEKT TAFELGEMAELEN
 MATERIAL HOLZ METALL FASSUNG
 ANALYSESTELLE P2 GOTT
 MESSAUFBAU STATIV
 FILTER m30lo30hi30li30
 User Login Raquet



	ppm	+/-	Error
Ce	1.000	+/-	129.902
La	1.000	+/-	106.631
Ba	1.000	+/-	110.878
Sb	48.355	+/-	40.815
Sn	47.890	+/-	26.680
Cd	1.000	+/-	23.393
Ag	1.000	+/-	7.576
Bal	879326.125	+/-	1272.718
Nb	39.812	+/-	26.490
Zr	1.000	+/-	88.467
Y	1.000	+/-	22.303
Sr	91.531	+/-	8.117
Rb	1.000	+/-	48.564
Th	1.000	+/-	1194.797
Bi	1.000	+/-	993.775
Au	1.000	+/-	32.802
As	5256.709	+/-	211.126
Se	1.000	+/-	16.000
Pb	30677.930	+/-	606.544
Hg	1.000	+/-	19.400
Zn	110.558	+/-	17.381
Cu	1450.200	+/-	69.261
Ni	1.000	+/-	37.453
Co	1.000	+/-	57.393
Fe	775.744	+/-	98.367
Mn	1.000	+/-	89.486
Cr	1.000	+/-	27.540
V	1.000	+/-	24.938
Ti	1.000	+/-	152.965
Ca	17608.871	+/-	442.043
K	7950.037	+/-	341.871
Al	6139.264	+/-	825.533
P	684.266	+/-	122.273
Si	32713.230	+/-	1062.567
Cl	4049.824	+/-	115.101
S	13029.660	+/-	300.593
Mg	1.000	+/-	10100.155

mRFA -Ergebnisse

XL3t-69288

Reading No 3
 Mode Mining
 Time 2018-06-21 14:12
 Duration 120.29
 Units ppm
 Sigma Value 2
 Sequence Final
 Flags 3mm
 INV NR Gm32
 OBJEKT TAFELGEMAELEN
 MATERIAL HOLZ METALL FASSUNG
 ANALYSESTELLE P3 KRONE
 MESSAUFBAU STATIV
 FILTER m30lo30hi30li30
 User Login Raquet



	ppm	+/-	Error
Ce	1.000	+/-	127.000
La	1.000	+/-	103.586
Ba	1.000	+/-	108.518
Sb	1.000	+/-	61.982
Sn	679.951	+/-	51.325
Cd	28.703	+/-	16.040
Ag	12.391	+/-	10.146
Bal	877441.188	+/-	1289.248
Nb	1.000	+/-	30.317
Zr	1.000	+/-	75.582
Y	1.000	+/-	18.632
Sr	130.971	+/-	8.823
Rb	1.000	+/-	54.260
Th	1.000	+/-	1117.987
Bi	1.000	+/-	857.827
Au	2032.495	+/-	89.754
As	4615.640	+/-	187.816
Se	1.000	+/-	18.025
Pb	21237.980	+/-	443.756
Hg	1.000	+/-	18.072
Zn	480.682	+/-	37.669
Cu	4804.913	+/-	150.649
Ni	1.000	+/-	39.427
Co	1.000	+/-	128.317
Fe	24733.627	+/-	604.761
Mn	107.537	+/-	98.636
Cr	99.494	+/-	32.473
V	1.000	+/-	29.042
Ti	1.000	+/-	171.897
Ca	9366.392	+/-	285.361
K	3062.676	+/-	229.643
Al	1486.090	+/-	679.307
P	17466.807	+/-	441.769
Si	15262.788	+/-	749.023
Cl	3411.447	+/-	102.112
S	13538.246	+/-	299.412
Mg	1.000	+/-	7525.612

mRFA -Ergebnisse

XL3t-69288

Reading No 4
 Mode Mining
 Time 2018-06-21 14:18
 Duration 121.59
 Units ppm
 Sigma Value 2
 Sequence Final
 Flags 3mm
 INV NR Gm32
 OBJEKT TAFELGEMAELEN
 MATERIAL HOLZ METALL FASSUNG
 ANALYSESTELLE P4 NIMBUS CHRISTUS
 MESSAUFBAU STATIV
 FILTER m30lo30hi30li30
 User Login Raquet



	ppm	+/-	Error
Ce	1.000	+/-	126.979
La	1.000	+/-	104.646
Ba	1.000	+/-	108.263
Sb	1.000	+/-	37.471
Sn	1126.834	+/-	63.371
Cd	31.776	+/-	16.358
Ag	14.666	+/-	10.346
Bal	855799.438	+/-	1460.751
Nb	1.000	+/-	35.279
Zr	1.000	+/-	80.488
Y	1.000	+/-	19.743
Sr	180.422	+/-	10.189
Rb	1.000	+/-	62.698
Th	1.000	+/-	1129.339
Bi	1.000	+/-	911.817
Au	1821.271	+/-	85.342
As	5200.708	+/-	198.509
Se	1.000	+/-	18.364
Pb	23429.586	+/-	477.333
Hg	1.000	+/-	18.689
Zn	443.591	+/-	36.102
Cu	5380.737	+/-	160.344
Ni	1.000	+/-	41.805
Co	1.000	+/-	124.584
Fe	22861.186	+/-	561.322
Mn	1.000	+/-	91.607
Cr	61.450	+/-	33.381
V	1.000	+/-	25.389
Ti	1.000	+/-	163.969
Ca	7235.405	+/-	253.586
K	1662.341	+/-	195.015
Al	1794.718	+/-	713.974
P	27214.000	+/-	608.289
Si	19445.736	+/-	834.780
Cl	3761.173	+/-	106.229
S	22534.971	+/-	462.241
Mg	1.000	+/-	6825.048

mRFA -Ergebnisse

XL3t-69288

Reading No 5
 Mode Mining
 Time 2018-06-21 14:27
 Duration 121.72
 Units ppm
 Sigma Value 2
 Sequence Final
 Flags 3mm
 INV NR Gm32
 OBJEKT TAFELGEMAELEN
 MATERIAL HOLZ METALL FASSUNG
 ANALYSESTELLE P5 NIMBUS MARIA
 MESSAUFBAU STATIV
 FILTER m30lo30hi30li30
 User Login Raquet



	ppm	+/-	Error
Ce	1.000	+/-	117.577
La	1.000	+/-	96.548
Ba	1.000	+/-	100.945
Sb	1.000	+/-	35.269
Sn	622.514	+/-	47.056
Cd	19.052	+/-	14.590
Ag	19.658	+/-	10.254
Bal	888103.125	+/-	1156.092
Nb	1.000	+/-	22.816
Zr	1.000	+/-	65.865
Y	1.000	+/-	16.176
Sr	164.139	+/-	9.323
Rb	40.508	+/-	32.224
Th	1.000	+/-	972.632
Bi	1.000	+/-	751.279
Au	3562.729	+/-	117.674
As	3960.257	+/-	162.277
Se	1.000	+/-	18.446
Pb	16403.287	+/-	336.725
Hg	1.000	+/-	17.077
Zn	492.904	+/-	38.777
Cu	3617.971	+/-	121.347
Ni	1.000	+/-	39.309
Co	1.000	+/-	124.504
Fe	23123.695	+/-	560.510
Mn	1.000	+/-	89.107
Cr	146.684	+/-	33.880
V	1.000	+/-	23.794
Ti	1.000	+/-	156.185
Ca	9755.047	+/-	281.580
K	2412.417	+/-	206.997
Al	1213.799	+/-	610.307
P	21826.680	+/-	500.101
Si	8193.722	+/-	586.801
Cl	3027.013	+/-	89.990
S	13294.763	+/-	281.778
Mg	1.000	+/-	7338.799

mRFA -Ergebnisse

XL3t-69288

Reading No 6
 Mode Mining
 Time 2018-06-21 14:38
 Duration 120.56
 Units ppm
 Sigma Value 2
 Sequence Final
 Flags 3mm
 INV NR Gm32
 OBJEKT TAFELGEMAELENDE
 MATERIAL HOLZ METALL FASSUNG
 ANALYSESTELLE P6 THRON MUSTER
 MESSAUFBAU STATIV
 FILTER m30lo30hi30li30
 User Login Raquet



	ppm	+/-	Error
Ce	1.000	+/-	125.965
La	1.000	+/-	103.143
Ba	1.000	+/-	107.924
Sb	1.000	+/-	40.389
Sn	731.014	+/-	52.363
Cd	1.000	+/-	22.783
Ag	1.000	+/-	7.818
Bal	906593.500	+/-	990.272
Nb	25.822	+/-	23.053
Zr	1.000	+/-	79.057
Y	1.000	+/-	19.271
Sr	120.380	+/-	8.341
Rb	1.000	+/-	46.394
Th	1.000	+/-	1115.231
Bi	1.000	+/-	896.932
Au	1.000	+/-	29.574
As	4924.028	+/-	192.696
Se	1.000	+/-	15.660
Pb	24851.863	+/-	483.252
Hg	1.000	+/-	16.678
Zn	255.371	+/-	26.952
Cu	6929.632	+/-	189.191
Ni	1.000	+/-	36.729
Co	1.000	+/-	56.867
Fe	3486.079	+/-	177.251
Mn	543.637	+/-	117.051
Cr	1.000	+/-	29.885
V	1.000	+/-	33.123
Ti	1.000	+/-	149.898
Ca	24215.646	+/-	545.999
K	7101.101	+/-	316.902
Al	1578.134	+/-	579.216
P	648.979	+/-	102.760
Si	8004.471	+/-	488.364
Cl	2819.845	+/-	88.630
S	7170.453	+/-	177.872
Mg	1.000	+/-	5639.710

mRFA -Ergebnisse

XL3t-69288

Reading No 7
 Mode Mining
 Time 2018-06-21 14:42
 Duration 121.05
 Units ppm
 Sigma Value 2
 Sequence Final
 Flags 3mm
 INV NR Gm32
 OBJEKT TAFELGEMAELEN
 MATERIAL HOLZ METALL FASSUNG
 ANALYSESTELLE P7 GELBER HINTERGRUND
 MESSAUFBAU STATIV
 FILTER m30lo30hi30li30
 User Login Raquet



	ppm	+/-	Error
Ce	1.000	+/-	244.116
La	1.000	+/-	197.363
Ba	1.000	+/-	205.715
Sb	1.000	+/-	66.580
Sn	8213.992	+/-	292.401
Cd	40.442	+/-	30.313
Ag	1.000	+/-	15.141
Bal	846079.188	+/-	2301.733
Nb	71.314	+/-	58.806
Zr	1.000	+/-	178.717
Y	1.000	+/-	46.890
Sr	88.919	+/-	12.997
Rb	1.000	+/-	114.938
Th	1.000	+/-	2939.564
Bi	1.000	+/-	1888.165
Au	1.000	+/-	59.196
As	11207.838	+/-	422.431
Se	1.000	+/-	26.596
Pb	70763.578	+/-	1751.691
Hg	1.000	+/-	34.158
Zn	110.825	+/-	18.599
Cu	113.883	+/-	30.883
Ni	1.000	+/-	54.490
Co	79.543	+/-	50.132
Fe	1.000	+/-	123.098
Mn	175.913	+/-	123.758
Cr	1.000	+/-	34.763
V	1.000	+/-	24.881
Ti	1.000	+/-	116.032
Ca	2945.866	+/-	292.325
K	939.521	+/-	247.324
Al	2096.970	+/-	871.411
P	2777.021	+/-	225.797
Si	10482.594	+/-	663.719
Cl	5118.711	+/-	183.879
S	38693.938	+/-	1129.975
Mg	1.000	+/-	13259.110

mRFA -Ergebnisse

XL3t-69288

Reading No 8
 Mode Mining
 Time 2018-06-21 14:46
 Duration 120.57
 Units ppm
 Sigma Value 2
 Sequence Final
 Flags 3mm
 INV NR Gm32
 OBJEKT TAFELGEMAELENDE
 MATERIAL HOLZ METALL FASSUNG
 ANALYSESTELLE P8 GEWAND ENGEL
 MESSAUFBAU STATIV
 FILTER m30lo30hi30li30
 User Login Raquet



	ppm	+/-	Error
Ce	1.000	+/-	126.252
La	1.000	+/-	102.119
Ba	1.000	+/-	108.421
Sb	1.000	+/-	43.922
Sn	671.045	+/-	52.731
Cd	1.000	+/-	19.417
Ag	1.000	+/-	15.102
Bal	905835.938	+/-	1069.983
Nb	1.000	+/-	32.658
Zr	1.000	+/-	72.228
Y	1.000	+/-	17.321
Sr	150.712	+/-	9.427
Rb	1.000	+/-	33.931
Th	1.000	+/-	991.830
Bi	1.000	+/-	952.763
Au	1.000	+/-	27.366
As	4425.170	+/-	185.771
Se	1.000	+/-	17.662
Pb	17253.418	+/-	386.318
Hg	1.000	+/-	15.500
Zn	26.962	+/-	17.517
Cu	5218.363	+/-	171.868
Ni	1.000	+/-	38.625
Co	1.000	+/-	36.987
Fe	160.018	+/-	73.871
Mn	1.000	+/-	96.776
Cr	1.000	+/-	31.080
V	1.000	+/-	20.504
Ti	1.000	+/-	96.884
Ca	20121.920	+/-	542.208
K	1405.254	+/-	214.191
Al	2264.250	+/-	772.711
P	1503.321	+/-	182.654
Si	11211.712	+/-	672.354
Cl	5074.283	+/-	152.679
S	24677.594	+/-	587.689
Mg	1.000	+/-	10303.383

mRFA -Ergebnisse

XL3t-69288

Reading No 9
 Mode Mining
 Time 2018-06-21 14:50
 Duration 121.98
 Units ppm
 Sigma Value 2
 Sequence Final
 Flags
 INV NR Gm32
 OBJEKT TAFELGEMAELEN
 MATERIAL HOLZ METALL FASSUNG
 ANALYSESTELLE P8 GEWAND ENGEL
 MESSAUFBAU STATIV
 FILTER m30lo30hi30li30
 User Login Raquet



	ppm	+/-	Error
Ce	-339.000	+/-	99.515
La	1.000	+/-	45.786
Ba	1.000	+/-	49.211
Sb	1.000	+/-	16.778
Sn	647.907	+/-	21.281
Cd	20.431	+/-	7.247
Ag	6.079	+/-	4.509
Bal	915159.938	+/-	566.443
Nb	16.210	+/-	12.071
Zr	1.000	+/-	42.601
Y	1.000	+/-	9.995
Sr	142.618	+/-	5.327
Rb	1.000	+/-	27.848
Th	1.000	+/-	641.626
Bi	1.000	+/-	475.136
Au	1.000	+/-	15.156
As	4286.802	+/-	115.351
Se	1.000	+/-	9.852
Pb	16104.771	+/-	218.556
Hg	1.000	+/-	8.118
Zn	17.105	+/-	10.627
Cu	5457.311	+/-	104.243
Ni	1.000	+/-	26.324
Co	1.000	+/-	20.372
Fe	122.114	+/-	41.916
Mn	1.000	+/-	56.242
Cr	1.000	+/-	16.880
V	1.000	+/-	11.986
Ti	1.000	+/-	62.964
Ca	22219.426	+/-	350.867
K	1225.985	+/-	134.413
Al	892.657	+/-	475.654
P	1481.675	+/-	112.512
Si	8500.678	+/-	362.735
Cl	2948.580	+/-	57.033
S	20749.738	+/-	304.091
Mg	1.000	+/-	5396.655

mRFA -Ergebnisse

XL3t-69288

Reading No 10
 Mode Mining
 Time 2018-06-21 14:54
 Duration 120.92
 Units ppm
 Sigma Value 2
 Sequence Final
 Flags
 INV NR Gm32
 OBJEKT TAFELGEMAELEN
 MATERIAL HOLZ METALL FASSUNG
 ANALYSESTELLE P9 MANTEL MARIA
 MESSAUFBAU STATIV
 FILTER m30lo30hi30li30
 User Login Raquet



	ppm	+/-	Error
Ce	-339.000	+/-	85.797
La	1.000	+/-	39.476
Ba	1.000	+/-	42.600
Sb	1.000	+/-	18.700
Sn	12.451	+/-	7.929
Cd	9.590	+/-	5.787
Ag	1.000	+/-	5.410
Bal	874445.125	+/-	845.790
Nb	1.000	+/-	6.263
Zr	1.000	+/-	24.950
Y	1.000	+/-	5.715
Sr	97.868	+/-	4.580
Rb	1.000	+/-	13.080
Th	1.000	+/-	376.389
Bi	1.000	+/-	284.551
Au	1.000	+/-	10.799
As	755.862	+/-	60.188
Se	1.000	+/-	7.322
Pb	4226.799	+/-	68.327
Hg	1.000	+/-	5.144
Zn	137.694	+/-	33.909
Cu	75870.953	+/-	679.688
Ni	1.000	+/-	25.255
Co	1.000	+/-	28.622
Fe	2287.703	+/-	79.496
Mn	1.000	+/-	77.581
Cr	1.000	+/-	16.078
V	1.000	+/-	20.884
Ti	113.899	+/-	110.184
Ca	10367.876	+/-	169.533
K	2901.570	+/-	142.684
Al	4756.358	+/-	466.943
P	420.148	+/-	57.289
Si	14254.330	+/-	344.112
Cl	2040.660	+/-	31.103
S	7301.130	+/-	84.037
Mg	1.000	+/-	3708.663

mRFA -Ergebnisse

XL3t-69288

Reading No 11
 Mode Mining
 Time 2018-06-21 15:00
 Duration 122.00
 Units ppm
 Sigma Value 2
 Sequence Final
 Flags
 INV NR Gm32
 OBJEKT TAFELGEMAELEN
 MATERIAL HOLZ METALL FASSUNG
 ANALYSESTELLE P10 MANTEL
 MESSAUFBAU STATIV
 FILTER m30lo30hi30li30
 User Login Raquet

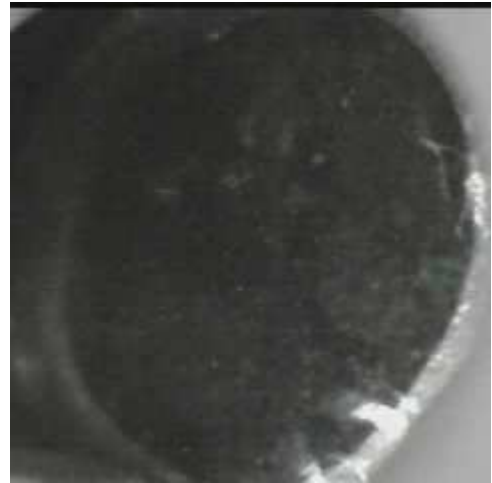


	ppm	+/-	Error
Ce	-339.000	+/-	128.651
La	1.000	+/-	58.782
Ba	1.000	+/-	62.678
Sb	1.000	+/-	21.095
Sn	29.589	+/-	11.608
Cd	1.000	+/-	12.084
Ag	1.000	+/-	4.264
Bal	893113.625	+/-	920.375
Nb	34.240	+/-	26.062
Zr	1.000	+/-	85.262
Y	1.000	+/-	21.313
Sr	161.923	+/-	8.148
Rb	1.000	+/-	55.659
Th	1.000	+/-	1408.913
Bi	1.000	+/-	906.159
Au	1.000	+/-	27.651
As	9479.567	+/-	244.029
Se	1.000	+/-	13.935
Pb	39629.398	+/-	679.531
Hg	1.000	+/-	15.984
Zn	108.818	+/-	12.812
Cu	1783.089	+/-	59.691
Ni	1.000	+/-	34.272
Co	1.000	+/-	31.237
Fe	731.699	+/-	71.993
Mn	86.357	+/-	70.058
Cr	1.000	+/-	31.953
V	1.000	+/-	16.823
Ti	1.000	+/-	89.174
Ca	7961.684	+/-	205.663
K	2033.325	+/-	149.836
Al	2760.688	+/-	532.673
P	1676.717	+/-	118.102
Si	12340.943	+/-	450.123
Cl	3499.259	+/-	80.545
S	24569.037	+/-	485.497
Mg	1.000	+/-	7454.688

mRFA -Ergebnisse

XL3t-69288

Reading No 12
 Mode Mining
 Time 2018-06-21 15:07
 Duration 121.70
 Units ppm
 Sigma Value 2
 Sequence Final
 Flags
 INV NR Gm32
 OBJEKT TAFELGEMAELEN
 MATERIAL HOLZ METALL FASSUNG
 ANALYSESTELLE P11 MANTEL
 MESSAUFBAU STATIV
 FILTER m30lo30hi30li30
 User Login Raquet



	ppm	+/-	Error
Ce	-339.000	+/-	132.798
La	1.000	+/-	60.739
Ba	1.000	+/-	64.719
Sb	1.000	+/-	29.148
Sn	61.139	+/-	12.674
Cd	16.040	+/-	8.477
Ag	1.000	+/-	7.266
Bal	878702.000	+/-	1099.269
Nb	41.333	+/-	29.296
Zr	1.000	+/-	94.933
Y	1.000	+/-	23.916
Sr	168.787	+/-	8.895
Rb	1.000	+/-	61.649
Th	1.000	+/-	1463.020
Bi	1.000	+/-	1003.165
Au	1.000	+/-	31.243
As	10062.742	+/-	263.551
Se	1.000	+/-	14.319
Pb	43883.609	+/-	762.991
Hg	1.000	+/-	17.881
Zn	102.390	+/-	13.591
Cu	2247.105	+/-	70.942
Ni	1.000	+/-	59.959
Co	1.000	+/-	36.056
Fe	1951.113	+/-	107.644
Mn	80.355	+/-	76.600
Cr	1.000	+/-	29.443
V	1.000	+/-	24.490
Ti	444.247	+/-	109.924
Ca	7613.000	+/-	199.150
K	2098.258	+/-	150.152
Al	3993.160	+/-	595.889
P	2045.848	+/-	127.100
Si	16549.605	+/-	539.329
Cl	4005.445	+/-	90.693
S	25933.814	+/-	510.766
Mg	1.000	+/-	6099.755

mRFA -Ergebnisse

XL3t-69288

Reading No 13
 Mode Mining
 Time 2018-06-21 15:12
 Duration 121.35
 Units ppm
 Sigma Value 2
 Sequence Final
 Flags 3mm
 INV NR Gm32
 OBJEKT TAFELGEMAELEN
 MATERIAL HOLZ METALL FASSUNG
 ANALYSESTELLE P12 BENEDIKT
 MESSAUFBAU STATIV
 FILTER m30lo30hi30li30
 User Login Raquet



	ppm	+/-	Error
Ce	1.000	+/-	127.289
La	1.000	+/-	104.828
Ba	1.000	+/-	110.318
Sb	1.000	+/-	52.475
Sn	72.077	+/-	27.845
Cd	1.000	+/-	17.348
Ag	1.000	+/-	7.942
Bal	901755.500	+/-	1073.241
Nb	1.000	+/-	38.758
Zr	1.000	+/-	87.609
Y	1.000	+/-	21.641
Sr	120.210	+/-	8.743
Rb	1.000	+/-	65.190
Th	1.000	+/-	1461.965
Bi	1.000	+/-	982.968
Au	1.000	+/-	31.974
As	6663.990	+/-	237.158
Se	1.000	+/-	16.487
Pb	28117.002	+/-	628.253
Hg	1.000	+/-	18.204
Zn	92.164	+/-	14.095
Cu	276.317	+/-	32.733
Ni	1.000	+/-	38.637
Co	1.000	+/-	36.194
Fe	238.708	+/-	75.429
Mn	1.000	+/-	102.989
Cr	1.000	+/-	29.319
V	1.000	+/-	20.556
Ti	1.000	+/-	96.247
Ca	10281.351	+/-	324.259
K	1519.343	+/-	177.761
Al	2625.125	+/-	711.836
P	1908.633	+/-	180.546
Si	11633.198	+/-	636.598
Cl	4915.330	+/-	152.180
S	29781.123	+/-	754.604
Mg	1.000	+/-	8075.919

mRFA -Ergebnisse

XL3t-69288

Reading No 14
 Mode Mining
 Time 2018-06-21 15:23
 Duration 120.07
 Units ppm
 Sigma Value 2
 Sequence Final
 Flags
 INV NR Gm32
 OBJEKT TAFELGEMAELEN
 MATERIAL HOLZ METALL FASSUNG
 ANALYSESTELLE P13 STIFTER
 MESSAUFBAU STATIV
 FILTER m30lo30hi30li30
 User Login Raquet



	ppm	+/-	Error
Ce	-339.000	+/-	101.092
La	1.000	+/-	46.349
Ba	1.000	+/-	49.536
Sb	31.246	+/-	17.661
Sn	1.000	+/-	14.002
Cd	11.726	+/-	6.629
Ag	1.000	+/-	4.895
Bal	860683.625	+/-	1039.743
Nb	26.968	+/-	19.814
Zr	1.000	+/-	66.713
Y	1.000	+/-	16.265
Sr	133.167	+/-	6.493
Rb	1.000	+/-	47.805
Th	1.000	+/-	1126.373
Bi	1.000	+/-	726.864
Au	1.000	+/-	22.449
As	7469.408	+/-	192.486
Se	1.000	+/-	12.147
Pb	29559.379	+/-	477.397
Hg	1.000	+/-	12.198
Zn	86.375	+/-	9.982
Cu	185.346	+/-	20.964
Ni	1.000	+/-	31.679
Co	1.000	+/-	34.104
Fe	101.308	+/-	47.724
Mn	1.000	+/-	94.406
Cr	19.327	+/-	18.867
V	1.000	+/-	16.515
Ti	1.000	+/-	68.577
Ca	20937.533	+/-	394.560
K	608.745	+/-	106.452
Al	3573.338	+/-	758.604
P	3024.148	+/-	185.604
Si	13407.124	+/-	548.730
Cl	3507.028	+/-	81.327
S	43022.203	+/-	762.905
Mg	13611.940	+/-	8157.113

mRFA -Ergebnisse

XL3t-69288

Reading No 15
 Mode Mining
 Time 2018-06-21 15:27
 Duration 120.84
 Units ppm
 Sigma Value 2
 Sequence Final
 Flags 3mm
 INV NR Gm32
 OBJEKT TAFELGEMAELEN
 MATERIAL HOLZ METALL FASSUNG
 ANALYSESTELLE P13 STIFTER
 MESSAUFBAU STATIV
 FILTER m30lo30hi30li30
 User Login Raquet



	ppm	+/-	Error
Ce	1.000	+/-	139.368
La	1.000	+/-	115.668
Ba	1.000	+/-	119.546
Sb	1.000	+/-	45.822
Sn	1.000	+/-	37.249
Cd	1.000	+/-	18.001
Ag	1.000	+/-	8.778
Bal	874710.250	+/-	1353.383
Nb	1.000	+/-	46.963
Zr	1.000	+/-	96.248
Y	1.000	+/-	23.939
Sr	128.254	+/-	9.384
Rb	1.000	+/-	61.309
Th	1.000	+/-	1511.719
Bi	1.000	+/-	1076.218
Au	1.000	+/-	35.061
As	7462.630	+/-	257.559
Se	1.000	+/-	23.791
Pb	32589.234	+/-	711.503
Hg	1.000	+/-	19.767
Zn	88.510	+/-	13.747
Cu	154.342	+/-	27.613
Ni	1.000	+/-	39.945
Co	1.000	+/-	38.892
Fe	127.919	+/-	71.213
Mn	1.000	+/-	109.611
Cr	1.000	+/-	31.303
V	1.000	+/-	20.169
Ti	1.000	+/-	93.984
Ca	12296.938	+/-	367.395
K	649.540	+/-	154.156
Al	2867.064	+/-	821.041
P	3318.362	+/-	231.319
Si	14826.449	+/-	736.483
Cl	5679.809	+/-	169.071
S	45100.742	+/-	1077.227
Mg	1.000	+/-	14959.977

mRFA -Ergebnisse

XL3t-69288

Reading No 16
 Mode Mining
 Time 2018-06-21 15:32
 Duration 121.92
 Units ppm
 Sigma Value 2
 Sequence Final
 Flags 3mm
 INV NR Gm32
 OBJEKT TAFELGEMAELEN
 MATERIAL HOLZ METALL FASSUNG
 ANALYSESTELLE P14 RS INVENTARNUMMER
 MESSAUFBAU STATIV
 FILTER m30lo30hi30li30
 User Login Raquet



	ppm	+/-	Error
Ce	1.000	+/-	93.369
La	1.000	+/-	77.900
Ba	346.913	+/-	91.217
Sb	1.000	+/-	28.565
Sn	49.704	+/-	20.589
Cd	13.726	+/-	11.523
Ag	1.000	+/-	6.137
Bal	917624.500	+/-	730.872
Nb	25.062	+/-	16.925
Zr	1.000	+/-	59.001
Y	1.000	+/-	13.924
Sr	53.210	+/-	5.157
Rb	1.000	+/-	40.294
Th	1.000	+/-	989.381
Bi	1.000	+/-	674.187
Au	1.000	+/-	21.613
As	3052.867	+/-	137.185
Se	1.000	+/-	12.879
Pb	19171.973	+/-	356.679
Hg	1.000	+/-	12.387
Zn	10422.287	+/-	223.341
Cu	1.000	+/-	19.284
Ni	1.000	+/-	28.664
Co	1.000	+/-	24.468
Fe	65.550	+/-	54.761
Mn	1.000	+/-	132.548
Cr	1.000	+/-	38.955
V	1.000	+/-	120.299
Ti	1.000	+/-	642.948
Ca	4082.069	+/-	148.235
K	1100.172	+/-	147.408
Al	2373.012	+/-	540.059
P	1655.224	+/-	140.663
Si	11913.937	+/-	530.895
Cl	2093.808	+/-	65.685
S	25955.973	+/-	525.300
Mg	1.000	+/-	8522.771

mRFA -Ergebnisse

XL3t-69288

Reading No 17
 Mode Mining
 Time 2018-06-21 15:38
 Duration 120.86
 Units ppm
 Sigma Value 2
 Sequence Final
 Flags 3mm
 INV NR Gm32
 OBJEKT TAFELGEMAELEN
 MATERIAL HOLZ METALL FASSUNG
 ANALYSESTELLE P15 RS SCHRIFT
 MESSAUFBAU STATIV
 FILTER m30lo30hi30li30
 User Login Raquet



	ppm	+/-	Error
Ce	1.000	+/-	198.704
La	1.000	+/-	163.149
Ba	1474.643	+/-	214.536
Sb	1.000	+/-	56.563
Sn	1.000	+/-	43.871
Cd	1.000	+/-	32.124
Ag	1.000	+/-	12.933
Bal	855336.063	+/-	2035.856
Nb	109.776	+/-	51.937
Zr	1.000	+/-	160.929
Y	1.000	+/-	40.109
Sr	71.185	+/-	12.045
Rb	1.000	+/-	88.541
Th	1.000	+/-	2684.681
Bi	1.000	+/-	1742.830
Au	1.000	+/-	53.965
As	5493.597	+/-	331.100
Se	1.000	+/-	22.336
Pb	55834.070	+/-	1464.396
Hg	1.000	+/-	30.558
Zn	97.336	+/-	20.243
Cu	62.064	+/-	28.466
Ni	1.000	+/-	47.789
Co	1.000	+/-	56.346
Fe	1212.585	+/-	148.337
Mn	374.765	+/-	168.021
Cr	1.000	+/-	56.929
V	1.000	+/-	152.136
Ti	1.000	+/-	772.983
Ca	16518.715	+/-	568.504
K	3640.959	+/-	331.401
Al	2988.854	+/-	1046.627
P	1859.138	+/-	237.802
Si	20714.438	+/-	1106.965
Cl	2206.247	+/-	111.999
S	32005.529	+/-	1010.706
Mg	1.000	+/-	10313.813

mRFA -Ergebnisse

XL3t-69288

Reading No 18
 Mode Mining
 Time 2018-06-21 15:44
 Duration 121.76
 Units ppm
 Sigma Value 2
 Sequence Final
 Flags 3mm
 INV NR Gm32
 OBJEKT TAFELGEMAELENDE
 MATERIAL HOLZ METALL FASSUNG
 ANALYSESTELLE P16 VS HOLZ KREUZ
 MESSAUFBAU STATIV
 FILTER m30lo30hi30li30
 User Login Raquet



	ppm	+/-	Error
Ce	1.000	+/-	102.953
La	1.000	+/-	85.466
Ba	177.553	+/-	95.399
Sb	1.000	+/-	45.991
Sn	290.454	+/-	33.220
Cd	17.033	+/-	12.905
Ag	1.000	+/-	12.536
Bal	867839.125	+/-	1262.108
Nb	1.000	+/-	25.059
Zr	1.000	+/-	60.450
Y	1.000	+/-	14.655
Sr	148.751	+/-	8.318
Rb	1.000	+/-	35.708
Th	1.000	+/-	898.849
Bi	1.000	+/-	698.023
Au	1.000	+/-	21.991
As	2448.053	+/-	138.861
Se	1.000	+/-	14.435
Pb	15361.213	+/-	303.379
Hg	1.000	+/-	12.874
Zn	1333.260	+/-	56.200
Cu	1294.999	+/-	64.265
Ni	1.000	+/-	36.251
Co	1.000	+/-	135.358
Fe	32869.273	+/-	708.340
Mn	1.000	+/-	84.931
Cr	75.808	+/-	31.285
V	1.000	+/-	38.585
Ti	134.105	+/-	129.656
Ca	24517.150	+/-	505.532
K	2549.419	+/-	212.343
Al	2470.488	+/-	671.774
P	1307.039	+/-	138.933
Si	25797.551	+/-	860.565
Cl	4243.187	+/-	106.863
S	17125.432	+/-	327.868
Mg	1.000	+/-	7753.518