

mRFA -Ergebnisse

XL3t-69288

Reading No 19
 Mode Mining
 Time 2018-05-24 12:00
 Duration 120.80
 Units ppm
 Sigma Value 2
 Sequence Final
 Flags
 INV NR Gm29
 OBJEKT TAFELGEMAELEN
 MATERIAL HOLZ METALL FASSUNG
 ANALYSESTELLE P1 NIMBUS
 MESSAUFBAU STATIV
 FILTER m30lo30hi30li30
 User Login Raquet



	ppm	+/-	Error
Ce	-339.000	+/-	91.716
La	1.000	+/-	42.158
Ba	1.000	+/-	45.007
Sb	1.000	+/-	20.253
Sn	269.185	+/-	12.962
Cd	18.387	+/-	6.281
Ag	6.711	+/-	4.018
Bal	864057.188	+/-	889.142
Nb	1.000	+/-	21.862
Zr	1.000	+/-	47.903
Y	1.000	+/-	11.388
Sr	135.763	+/-	5.484
Rb	24.403	+/-	23.113
Th	1.000	+/-	692.431
Bi	1.000	+/-	529.877
Au	1726.777	+/-	50.838
As	5374.664	+/-	131.648
Se	1.000	+/-	11.407
Pb	19257.908	+/-	263.187
Hg	1.000	+/-	9.842
Zn	89.819	+/-	12.997
Cu	1215.466	+/-	40.673
Ni	1.000	+/-	27.423
Co	1.000	+/-	44.841
Fe	6187.561	+/-	159.366
Mn	74.842	+/-	62.818
Cr	60.406	+/-	18.476
V	1.000	+/-	20.539
Ti	1.000	+/-	109.796
Ca	11293.135	+/-	218.377
K	695.550	+/-	105.696
Al	3810.264	+/-	618.976
P	42457.633	+/-	630.424
Si	14786.182	+/-	551.296
Cl	2028.498	+/-	45.282
S	26429.623	+/-	386.035
Mg	1.000	+/-	5953.292

mRFA -Ergebnisse

XL3t-69288

Reading No 20
 Mode Mining
 Time 2018-05-24 12:04
 Duration 121.48
 Units ppm
 Sigma Value 2
 Sequence Final
 Flags
 INV NR Gm29
 OBJEKT TAFELGEMAELEN
 MATERIAL HOLZ METALL FASSUNG
 ANALYSESTELLE P2 NIMBUS ROTLACK
 MESSAUFBAU STATIV
 FILTER m30lo30hi30li30
 User Login Raquet



	ppm	+/-	Error
Ce	-339.000	+/-	87.725
La	1.000	+/-	40.495
Ba	1.000	+/-	43.073
Sb	1.000	+/-	14.355
Sn	245.212	+/-	12.169
Cd	12.962	+/-	5.946
Ag	8.322	+/-	3.955
Bal	844157.313	+/-	992.815
Nb	15.129	+/-	12.641
Zr	1.000	+/-	44.472
Y	1.000	+/-	10.453
Sr	144.115	+/-	5.498
Rb	22.986	+/-	21.339
Th	1.000	+/-	638.723
Bi	1.000	+/-	499.903
Au	1736.096	+/-	50.034
As	4677.419	+/-	120.313
Se	1.000	+/-	11.057
Pb	17081.236	+/-	229.344
Hg	1.000	+/-	9.737
Zn	104.298	+/-	13.758
Cu	1579.492	+/-	46.644
Ni	1.000	+/-	27.131
Co	1.000	+/-	39.994
Fe	4752.796	+/-	136.125
Mn	182.941	+/-	66.629
Cr	49.425	+/-	17.342
V	1.000	+/-	13.310
Ti	1.000	+/-	102.983
Ca	27241.813	+/-	398.566
K	3601.005	+/-	159.591
Al	7066.218	+/-	705.327
P	21321.059	+/-	352.442
Si	43476.285	+/-	869.216
Cl	2522.379	+/-	50.135
S	20001.514	+/-	284.054
Mg	1.000	+/-	5671.081

mRFA -Ergebnisse

XL3t-69288

Reading No 21
 Mode Mining
 Time 2018-05-24 12:08
 Duration 122.16
 Units ppm
 Sigma Value 2
 Sequence Final
 Flags
 INV NR Gm29
 OBJEKT TAFELGEMAELEN
 MATERIAL HOLZ METALL FASSUNG
 ANALYSESTELLE P3 HINTERGRUND
 MESSAUFBAU STATIV
 FILTER m30lo30hi30li30
 User Login Raquet



	ppm	+/-	Error
Ce	-339.000	+/-	124.811
La	1.000	+/-	57.139
Ba	1.000	+/-	60.815
Sb	1.000	+/-	24.384
Sn	440.199	+/-	19.989
Cd	9.882	+/-	7.962
Ag	10.286	+/-	5.408
Bal	854028.750	+/-	1230.319
Nb	34.775	+/-	25.601
Zr	1.000	+/-	85.259
Y	1.000	+/-	21.285
Sr	132.258	+/-	7.689
Rb	1.000	+/-	65.771
Th	1.000	+/-	1304.747
Bi	1.000	+/-	912.509
Au	1651.116	+/-	66.276
As	8460.368	+/-	232.116
Se	1.000	+/-	15.878
Pb	36976.695	+/-	631.267
Hg	1.000	+/-	16.110
Zn	81.647	+/-	21.023
Cu	12711.842	+/-	247.003
Ni	1.000	+/-	35.339
Co	1.000	+/-	57.320
Fe	7175.516	+/-	202.627
Mn	120.549	+/-	73.073
Cr	28.342	+/-	22.929
V	1.000	+/-	26.975
Ti	146.079	+/-	100.387
Ca	6642.478	+/-	180.494
K	1170.186	+/-	132.225
Al	3494.698	+/-	665.923
P	18258.455	+/-	381.502
Si	18779.818	+/-	612.421
Cl	2818.185	+/-	65.457
S	26827.893	+/-	481.980
Mg	1.000	+/-	7416.783

mRFA -Ergebnisse

XL3t-69288

Reading No 22
 Mode Mining
 Time 2018-05-24 12:12
 Duration 120.79
 Units ppm
 Sigma Value 2
 Sequence Final
 Flags
 INV NR Gm29
 OBJEKT TAFELGEMAELEN
 MATERIAL HOLZ METALL FASSUNG
 ANALYSESTELLE P4 BROKAT
 MESSAUFBAU STATIV
 FILTER m30lo30hi30li30
 User Login Raquet



	ppm	+/-	Error
Ce	-339.000	+/-	143.886
La	1.000	+/-	66.080
Ba	1.000	+/-	70.012
Sb	1.000	+/-	22.526
Sn	9088.134	+/-	141.531
Cd	94.729	+/-	12.334
Ag	11.079	+/-	6.191
Bal	827006.063	+/-	1437.148
Nb	1.000	+/-	25.351
Zr	1.000	+/-	69.123
Y	1.000	+/-	16.717
Sr	131.686	+/-	7.156
Rb	1.000	+/-	42.354
Th	1.000	+/-	1140.100
Bi	1.000	+/-	760.392
Au	1.000	+/-	25.098
As	4427.566	+/-	172.146
Se	1.000	+/-	14.934
Pb	24595.072	+/-	423.936
Hg	1.000	+/-	13.249
Zn	47.873	+/-	28.769
Cu	37160.902	+/-	612.474
Ni	1.000	+/-	36.982
Co	1.000	+/-	45.023
Fe	4304.755	+/-	144.071
Mn	108.592	+/-	73.715
Cr	1.000	+/-	19.686
V	1.000	+/-	23.691
Ti	180.988	+/-	97.905
Ca	18289.338	+/-	377.003
K	2433.652	+/-	214.092
Al	6779.157	+/-	828.936
P	1931.977	+/-	131.231
Si	33899.004	+/-	837.993
Cl	2847.344	+/-	63.271
S	18764.902	+/-	319.883
Mg	7897.089	+/-	7360.319

mRFA -Ergebnisse

XL3t-69288

Reading No 23
 Mode Mining
 Time 2018-05-24 12:16
 Duration 120.86
 Units ppm
 Sigma Value 2
 Sequence Final
 Flags
 INV NR Gm29
 OBJEKT TAFELGEMAELEN
 MATERIAL HOLZ METALL FASSUNG
 ANALYSESTELLE P5 BROKAT
 MESSAUFBAU STATIV
 FILTER m30lo30hi30li30
 User Login Raquet



	ppm	+/-	Error
Ce	-339.000	+/-	127.150
La	1.000	+/-	58.419
Ba	1.000	+/-	61.925
Sb	1.000	+/-	23.172
Sn	6433.588	+/-	96.961
Cd	76.407	+/-	10.591
Ag	7.838	+/-	5.407
Bal	880856.750	+/-	932.177
Nb	1.000	+/-	26.239
Zr	1.000	+/-	59.696
Y	1.000	+/-	14.365
Sr	140.539	+/-	6.606
Rb	1.000	+/-	40.284
Th	1.000	+/-	1038.117
Bi	1.000	+/-	657.690
Au	1.000	+/-	20.757
As	4213.893	+/-	151.681
Se	1.000	+/-	12.710
Pb	22347.604	+/-	376.069
Hg	1.000	+/-	11.273
Zn	120.942	+/-	17.816
Cu	8431.487	+/-	179.447
Ni	1.000	+/-	34.469
Co	1.000	+/-	39.979
Fe	3071.031	+/-	124.735
Mn	85.017	+/-	74.475
Cr	29.349	+/-	19.907
V	1.000	+/-	19.778
Ti	165.771	+/-	94.097
Ca	23556.459	+/-	494.614
K	1707.879	+/-	240.256
Al	4185.473	+/-	672.383
P	1107.263	+/-	114.625
Si	26262.557	+/-	733.757
Cl	2042.987	+/-	53.333
S	15157.244	+/-	286.225
Mg	1.000	+/-	9751.321

mRFA -Ergebnisse

XL3t-69288

Reading No 24
 Mode Mining
 Time 2018-05-24 12:21
 Duration 120.70
 Units ppm
 Sigma Value 2
 Sequence Final
 Flags
 INV NR Gm29
 OBJEKT TAFELGEMAELEN
 MATERIAL HOLZ METALL FASSUNG
 ANALYSESTELLE P6 ROCK SOLDAT
 MESSAUFBAU STATIV
 FILTER m30lo30hi30li30
 User Login Raquet



	ppm	+/-	Error
Ce	-339.000	+/-	91.521
La	1.000	+/-	41.869
Ba	1.000	+/-	44.777
Sb	1.000	+/-	24.486
Sn	584.682	+/-	17.517
Cd	16.110	+/-	6.306
Ag	5.599	+/-	4.006
Bal	913185.250	+/-	579.000
Nb	1.000	+/-	16.165
Zr	1.000	+/-	39.316
Y	1.000	+/-	9.101
Sr	141.334	+/-	5.328
Rb	1.000	+/-	21.092
Th	1.000	+/-	567.039
Bi	1.000	+/-	460.743
Au	1.000	+/-	14.754
As	2917.610	+/-	100.003
Se	1.000	+/-	9.760
Pb	13266.379	+/-	178.773
Hg	1.000	+/-	9.095
Zn	1.000	+/-	16.253
Cu	22055.629	+/-	299.665
Ni	1.000	+/-	26.737
Co	1.000	+/-	31.187
Fe	2819.378	+/-	96.661
Mn	1.000	+/-	54.493
Cr	1.000	+/-	15.806
V	1.000	+/-	12.995
Ti	74.473	+/-	70.391
Ca	18697.803	+/-	272.892
K	1609.655	+/-	117.154
Al	1611.898	+/-	384.124
P	1265.398	+/-	76.550
Si	11196.646	+/-	345.192
Cl	1492.890	+/-	31.488
S	9059.241	+/-	128.201
Mg	1.000	+/-	3934.702

mRFA -Ergebnisse

XL3t-69288

Reading No 25
 Mode Mining
 Time 2018-05-24 12:28
 Duration 120.98
 Units ppm
 Sigma Value 2
 Sequence Final
 Flags 3mm
 INV NR Gm29
 OBJEKT TAFELGEMAELENDE
 MATERIAL HOLZ METALL FASSUNG
 ANALYSESTELLE P6 ROCK SOLDAT
 MESSAUFBAU STATIV
 FILTER m30lo30hi30li30
 User Login Raquet

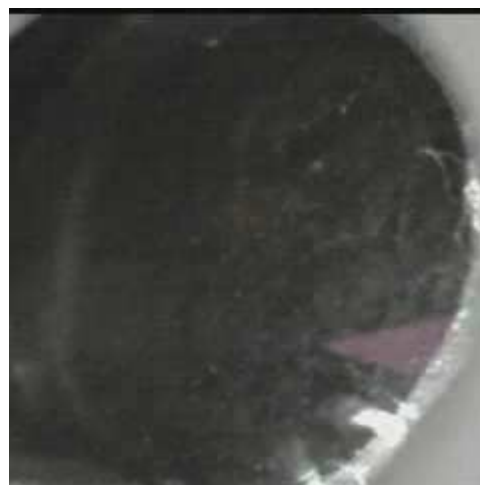


	ppm	+/-	Error
Ce	1.000	+/-	120.151
La	1.000	+/-	98.265
Ba	1.000	+/-	103.770
Sb	1.000	+/-	43.237
Sn	1259.907	+/-	61.809
Cd	27.650	+/-	15.276
Ag	1.000	+/-	7.962
Bal	927430.438	+/-	716.170
Nb	16.844	+/-	16.715
Zr	1.000	+/-	59.288
Y	1.000	+/-	14.052
Sr	118.594	+/-	7.204
Rb	1.000	+/-	29.189
Th	1.000	+/-	816.725
Bi	1.000	+/-	763.435
Au	1.000	+/-	22.547
As	3397.136	+/-	143.602
Se	1.000	+/-	15.757
Pb	16467.529	+/-	306.194
Hg	1.000	+/-	12.763
Zn	1.000	+/-	19.824
Cu	15975.515	+/-	334.941
Ni	1.000	+/-	33.082
Co	1.000	+/-	30.090
Fe	254.638	+/-	64.206
Mn	1.000	+/-	76.962
Cr	1.000	+/-	22.905
V	1.000	+/-	17.199
Ti	1.000	+/-	82.748
Ca	12897.996	+/-	327.935
K	1017.691	+/-	161.110
Al	1675.803	+/-	503.730
P	699.717	+/-	99.900
Si	6099.129	+/-	396.475
Cl	2930.040	+/-	82.954
S	9731.481	+/-	209.229
Mg	1.000	+/-	4777.540

mRFA -Ergebnisse

XL3t-69288

Reading No 26
 Mode Mining
 Time 2018-05-24 12:33
 Duration 120.48
 Units ppm
 Sigma Value 2
 Sequence Final
 Flags
 INV NR Gm29
 OBJEKT TAFELGEMAELEN
 MATERIAL HOLZ METALL FASSUNG
 ANALYSESTELLE P7 KLEID
 MESSAUFBAU STATIV
 FILTER m30lo30hi30li30
 User Login Raquet



	ppm	+/-	Error
Ce	-339.000	+/-	90.125
La	1.000	+/-	41.230
Ba	1.000	+/-	44.126
Sb	1.000	+/-	21.201
Sn	75.874	+/-	9.557
Cd	11.075	+/-	6.001
Ag	4.844	+/-	3.905
Bal	892760.250	+/-	714.421
Nb	21.374	+/-	13.898
Zr	1.000	+/-	48.312
Y	1.000	+/-	11.433
Sr	164.052	+/-	5.893
Rb	1.000	+/-	27.589
Th	1.000	+/-	689.312
Bi	1.000	+/-	586.689
Au	1.000	+/-	16.669
As	5304.674	+/-	132.779
Se	1.000	+/-	10.256
Pb	19987.043	+/-	275.464
Hg	1.000	+/-	9.164
Zn	64.865	+/-	9.311
Cu	1289.854	+/-	41.985
Ni	1.000	+/-	26.072
Co	1.000	+/-	22.360
Fe	539.161	+/-	57.202
Mn	600.073	+/-	77.633
Cr	21.844	+/-	16.947
V	1.000	+/-	13.739
Ti	1.000	+/-	88.366
Ca	18678.486	+/-	311.928
K	3869.279	+/-	162.389
Al	3839.786	+/-	570.021
P	1480.373	+/-	116.978
Si	27240.096	+/-	667.834
Cl	2044.180	+/-	45.693
S	22002.871	+/-	336.576
Mg	1.000	+/-	6991.292

mRFA -Ergebnisse

XL3t-69288

Reading No 27
 Mode Mining
 Time 2018-05-24 12:37
 Duration 121.92
 Units ppm
 Sigma Value 2
 Sequence Final
 Flags
 INV NR Gm29
 OBJEKT TAFELGEMAELEN
 MATERIAL HOLZ METALL FASSUNG
 ANALYSESTELLE P8 HAUSMARKE
 MESSAUFBAU STATIV
 FILTER m30lo30hi30li30
 User Login Raquet



	ppm	+/-	Error
Ce	-339.000	+/-	139.779
La	1.000	+/-	63.500
Ba	1.000	+/-	67.742
Sb	1.000	+/-	26.200
Sn	2637.403	+/-	57.591
Cd	34.529	+/-	9.918
Ag	1412.202	+/-	33.799
Bal	848966.813	+/-	1317.898
Nb	36.822	+/-	26.956
Zr	1.000	+/-	88.834
Y	1.000	+/-	22.132
Sr	111.170	+/-	7.512
Rb	1.000	+/-	53.740
Th	1.000	+/-	1391.712
Bi	1.000	+/-	953.706
Au	1.000	+/-	28.854
As	6685.726	+/-	221.022
Se	1.000	+/-	14.856
Pb	39470.828	+/-	688.892
Hg	1.000	+/-	16.193
Zn	50.540	+/-	17.630
Cu	10129.936	+/-	214.963
Ni	1.000	+/-	37.681
Co	1.000	+/-	34.340
Fe	1280.123	+/-	90.204
Mn	177.098	+/-	79.833
Cr	1.000	+/-	21.803
V	1.000	+/-	18.717
Ti	1.000	+/-	143.740
Ca	20603.242	+/-	418.126
K	3098.023	+/-	246.295
Al	4628.941	+/-	715.917
P	2170.729	+/-	127.362
Si	37847.980	+/-	949.397
Cl	5956.466	+/-	125.841
S	14701.408	+/-	290.918
Mg	1.000	+/-	6182.780

mRFA -Ergebnisse

XL3t-69288

Reading No 28
 Mode Mining
 Time 2018-05-24 12:42
 Duration 120.60
 Units ppm
 Sigma Value 2
 Sequence Final
 Flags
 INV NR Gm29
 OBJEKT TAFELGEMAELEN
 MATERIAL HOLZ METALL FASSUNG
 ANALYSESTELLE P9 HAUSMARKE
 MESSAUFBAU STATIV
 FILTER m30lo30hi30li30
 User Login Raquet



	ppm	+/-	Error
Ce	-339.000	+/-	103.944
La	1.000	+/-	47.447
Ba	1.000	+/-	50.907
Sb	1.000	+/-	16.912
Sn	1219.577	+/-	27.930
Cd	23.636	+/-	7.337
Ag	157.780	+/-	8.876
Bal	900347.438	+/-	710.090
Nb	19.108	+/-	14.459
Zr	1.000	+/-	50.359
Y	1.000	+/-	11.904
Sr	169.355	+/-	6.230
Rb	1.000	+/-	30.137
Th	1.000	+/-	716.467
Bi	1.000	+/-	576.935
Au	1.000	+/-	17.373
As	4916.419	+/-	134.002
Se	1.000	+/-	10.793
Pb	19812.879	+/-	281.283
Hg	1.000	+/-	9.306
Zn	64.295	+/-	11.311
Cu	3378.073	+/-	78.213
Ni	1.000	+/-	28.886
Co	1.000	+/-	24.829
Fe	601.150	+/-	59.263
Mn	1.000	+/-	62.335
Cr	1.000	+/-	15.622
V	1.000	+/-	14.387
Ti	1.000	+/-	75.623
Ca	14992.857	+/-	274.847
K	810.839	+/-	141.928
Al	2893.107	+/-	552.415
P	1843.869	+/-	119.480
Si	12745.961	+/-	442.193
Cl	3072.895	+/-	61.505
S	22463.994	+/-	351.312
Mg	10466.701	+/-	5940.905

mRFA -Ergebnisse

XL3t-69288

Reading No 29
 Mode Mining
 Time 2018-05-24 12:45
 Duration 122.18
 Units ppm
 Sigma Value 2
 Sequence Final
 Flags
 INV NR Gm29
 OBJEKT TAFELGEMAELEN
 MATERIAL HOLZ METALL FASSUNG
 ANALYSESTELLE P10 WIESE
 MESSAUFBAU STATIV
 FILTER m30lo30hi30li30
 User Login Raquet



	ppm	+/-	Error
Ce	-339.000	+/-	113.058
La	1.000	+/-	51.752
Ba	1.000	+/-	54.911
Sb	1.000	+/-	25.248
Sn	2135.661	+/-	41.356
Cd	26.240	+/-	7.864
Ag	5.239	+/-	4.696
Bal	881197.375	+/-	944.018
Nb	20.889	+/-	20.763
Zr	1.000	+/-	70.081
Y	1.000	+/-	17.057
Sr	145.567	+/-	7.055
Rb	1.000	+/-	47.767
Th	1.000	+/-	1195.460
Bi	1.000	+/-	757.855
Au	1.000	+/-	23.130
As	6723.541	+/-	191.950
Se	1.000	+/-	12.869
Pb	29899.176	+/-	502.962
Hg	1.000	+/-	12.649
Zn	59.147	+/-	13.185
Cu	5111.584	+/-	120.251
Ni	1.000	+/-	33.631
Co	1.000	+/-	27.322
Fe	656.371	+/-	66.775
Mn	1.000	+/-	69.049
Cr	1.000	+/-	20.184
V	1.000	+/-	13.247
Ti	1.000	+/-	70.649
Ca	9127.954	+/-	237.598
K	1344.995	+/-	148.531
Al	3746.002	+/-	639.056
P	2219.907	+/-	142.621
Si	16489.492	+/-	566.709
Cl	2106.953	+/-	55.145
S	27862.137	+/-	530.189
Mg	11121.795	+/-	6504.072

mRFA -Ergebnisse

XL3t-69288

Reading No 30
 Mode Mining
 Time 2018-05-24 13:43
 Duration 120.22
 Units ppm
 Sigma Value 2
 Sequence Final
 Flags
 INV NR Gm29
 OBJEKT TAFELGEMAELEN
 MATERIAL HOLZ METALL FASSUNG
 ANALYSESTELLE P11 HINTERGRUND
 MESSAUFBAU STATIV
 FILTER m30lo30hi30li30
 User Login Raquet



	ppm	+/-	Error
Ce	-339.000	+/-	165.504
La	1.000	+/-	86.446
Ba	1.000	+/-	79.948
Sb	1.000	+/-	25.760
Sn	325.322	+/-	21.039
Cd	1.000	+/-	9.137
Ag	1.000	+/-	6.538
Bal	837874.688	+/-	1476.407
Nb	39.958	+/-	30.387
Zr	1.000	+/-	98.423
Y	1.000	+/-	25.019
Sr	239.449	+/-	10.703
Rb	1.000	+/-	64.549
Th	1.000	+/-	1476.745
Bi	1.000	+/-	1041.905
Au	1.000	+/-	41.100
As	10774.914	+/-	280.180
Se	1.000	+/-	18.923
Pb	43961.469	+/-	777.888
Hg	1.000	+/-	18.669
Zn	91.371	+/-	12.968
Cu	796.671	+/-	41.991
Ni	1.000	+/-	39.282
Co	51.343	+/-	32.552
Fe	309.781	+/-	65.506
Mn	120.869	+/-	84.290
Cr	1.000	+/-	33.831
V	1.000	+/-	20.272
Ti	1.000	+/-	90.194
Ca	10855.657	+/-	262.529
K	1010.882	+/-	140.005
Al	2897.881	+/-	834.943
P	4187.553	+/-	212.896
Si	19967.486	+/-	713.565
Cl	3825.516	+/-	95.576
S	44947.324	+/-	882.676
Mg	17721.852	+/-	9317.701

mRFA -Ergebnisse

XL3t-69288

Reading No 31
 Mode Mining
 Time 2018-05-24 13:48
 Duration 121.26
 Units ppm
 Sigma Value 2
 Sequence Final
 Flags 3mm
 INV NR Gm29
 OBJEKT TAFELGEMAELENDE
 MATERIAL HOLZ METALL FASSUNG
 ANALYSESTELLE P12 HINTERGRND 2
 MESSAUFBAU STATIV
 FILTER m30lo30hi30li30
 User Login Raquet



	ppm	+/-	Error
Ce	1.000	+/-	155.321
La	1.000	+/-	138.506
Ba	1.000	+/-	130.662
Sb	1.000	+/-	44.986
Sn	202.576	+/-	38.507
Cd	20.964	+/-	18.083
Ag	31.767	+/-	13.477
Bal	816670.438	+/-	1925.786
Nb	1.000	+/-	25.631
Zr	1.000	+/-	74.256
Y	1.000	+/-	18.175
Sr	295.524	+/-	13.373
Rb	1.000	+/-	59.544
Th	1.000	+/-	1022.389
Bi	1.000	+/-	885.626
Au	5482.378	+/-	161.854
As	4686.344	+/-	184.505
Se	1.000	+/-	20.990
Pb	18352.422	+/-	389.462
Hg	1.000	+/-	19.938
Zn	189.317	+/-	31.549
Cu	258.345	+/-	34.768
Ni	1.000	+/-	44.966
Co	1.000	+/-	64.957
Fe	3694.034	+/-	201.551
Mn	1.000	+/-	194.881
Cr	82.873	+/-	34.956
V	1.000	+/-	25.640
Ti	146.278	+/-	125.946
Ca	44542.484	+/-	922.995
K	2792.900	+/-	230.536
Al	7161.525	+/-	1123.063
P	28778.852	+/-	659.112
Si	25778.012	+/-	1029.148
Cl	5687.627	+/-	151.371
S	35145.332	+/-	709.801
Mg	1.000	+/-	9840.200

mRFA -Ergebnisse

XL3t-69288

Reading No 32
 Mode Mining
 Time 2018-05-24 13:52
 Duration 120.37
 Units ppm
 Sigma Value 2
 Sequence Final
 Flags 3mm
 INV NR Gm29
 OBJEKT TAFELGEMAELENDE
 MATERIAL HOLZ METALL FASSUNG
 ANALYSESTELLE P12 HINTERGRND 2U
 MESSAUFBAU STATIV
 FILTER m30lo30hi30li30
 User Login Raquet



	ppm	+/-	Error
Ce	1.000	+/-	170.378
La	1.000	+/-	140.345
Ba	1.000	+/-	146.701
Sb	1.000	+/-	49.873
Sn	316.460	+/-	46.271
Cd	1.000	+/-	24.638
Ag	1.000	+/-	17.014
Bal	834216.563	+/-	1889.268
Nb	1.000	+/-	38.195
Zr	1.000	+/-	90.194
Y	1.000	+/-	22.468
Sr	328.006	+/-	15.207
Rb	1.000	+/-	61.509
Th	1.000	+/-	1228.059
Bi	1.000	+/-	1075.606
Au	2952.081	+/-	119.420
As	6323.326	+/-	235.293
Se	1.000	+/-	20.312
Pb	24936.818	+/-	556.011
Hg	1.000	+/-	21.366
Zn	102.722	+/-	24.273
Cu	245.018	+/-	35.344
Ni	1.000	+/-	46.768
Co	100.500	+/-	68.831
Fe	2628.301	+/-	178.533
Mn	165.638	+/-	121.042
Cr	47.360	+/-	35.833
V	1.000	+/-	33.995
Ti	1.000	+/-	127.461
Ca	26596.246	+/-	662.612
K	3691.386	+/-	268.742
Al	12301.842	+/-	1345.716
P	8221.949	+/-	326.352
Si	31851.406	+/-	1173.953
Cl	7439.882	+/-	204.677
S	37534.566	+/-	850.833
Mg	1.000	+/-	9762.672

mRFA -Ergebnisse

XL3t-69288

Reading No 33
 Mode Mining
 Time 2018-05-24 13:56
 Duration 120.52
 Units ppm
 Sigma Value 2
 Sequence Final
 Flags
 INV NR Gm29
 OBJEKT TAFELGEMAELEN
 MATERIAL HOLZ METALL FASSUNG
 ANALYSESTELLE P13 PRESSBROKAT
 MESSAUFBAU STATIV
 FILTER m30lo30hi30li30
 User Login Raquet



	ppm	+/-	Error
Ce	-339.000	+/-	243.462
La	1.000	+/-	110.947
Ba	1.000	+/-	116.343
Sb	1.000	+/-	34.085
Sn	28370.523	+/-	487.302
Cd	176.980	+/-	20.230
Ag	50.514	+/-	10.502
Bal	817734.000	+/-	1912.475
Nb	1.000	+/-	33.078
Zr	1.000	+/-	90.563
Y	1.000	+/-	22.900
Sr	141.511	+/-	9.295
Rb	45.834	+/-	44.612
Th	1.000	+/-	1333.112
Bi	1.000	+/-	985.927
Au	4173.562	+/-	121.807
As	3811.422	+/-	203.566
Se	1.000	+/-	20.707
Pb	30419.734	+/-	573.893
Hg	1.000	+/-	21.731
Zn	226.091	+/-	30.394
Cu	5106.260	+/-	142.820
Ni	1.000	+/-	56.219
Co	1.000	+/-	68.136
Fe	6897.525	+/-	242.723
Mn	416.763	+/-	118.880
Cr	65.631	+/-	26.779
V	1.000	+/-	31.006
Ti	1.000	+/-	172.948
Ca	39033.535	+/-	749.319
K	8023.204	+/-	325.832
Al	4280.676	+/-	815.140
P	18133.230	+/-	405.729
Si	15530.265	+/-	614.560
Cl	3084.577	+/-	75.300
S	14278.180	+/-	287.198
Mg	1.000	+/-	7845.662

mRFA -Ergebnisse

XL3t-69288

Reading No 34
 Mode Mining
 Time 2018-05-24 14:00
 Duration 120.01
 Units ppm
 Sigma Value 2
 Sequence Final
 Flags 3mm
 INV NR Gm29
 OBJEKT TAFELGEMAELEN
 MATERIAL HOLZ METALL FASSUNG
 ANALYSESTELLE P13 PRESSBROKAT
 MESSAUFBAU STATIV
 FILTER m30lo30hi30li30
 User Login Raquet



	ppm	+/-	Error
Ce	1.000	+/-	394.082
La	1.000	+/-	319.659
Ba	1.000	+/-	328.037
Sb	1.000	+/-	90.415
Sn	60810.746	+/-	1557.426
Cd	214.611	+/-	53.197
Ag	49.714	+/-	25.320
Bal	777733.813	+/-	3476.541
Nb	1.000	+/-	34.701
Zr	1.000	+/-	121.699
Y	1.000	+/-	30.955
Sr	118.675	+/-	12.461
Rb	85.207	+/-	61.341
Th	1.000	+/-	2082.979
Bi	1.000	+/-	1363.250
Au	8358.286	+/-	273.698
As	3987.344	+/-	255.800
Se	1.000	+/-	31.475
Pb	29947.227	+/-	779.591
Hg	1.000	+/-	33.670
Zn	221.076	+/-	50.562
Cu	9947.414	+/-	323.671
Ni	1.000	+/-	78.516
Co	1.000	+/-	104.080
Fe	7737.197	+/-	360.348
Mn	389.561	+/-	169.144
Cr	78.095	+/-	44.776
V	1.000	+/-	38.169
Ti	156.494	+/-	155.576
Ca	30421.125	+/-	814.803
K	8585.605	+/-	443.410
Al	5061.591	+/-	1208.521
P	17599.709	+/-	542.794
Si	17004.291	+/-	924.601
Cl	4924.634	+/-	162.905
S	16567.510	+/-	445.912
Mg	1.000	+/-	16268.928

mRFA -Ergebnisse

XL3t-69288

Reading No 35
 Mode Mining
 Time 2018-05-24 14:04
 Duration 120.47
 Units ppm
 Sigma Value 2
 Sequence Final
 Flags 3mm
 INV NR Gm29
 OBJEKT TAFELGEMAELEN
 MATERIAL HOLZ METALL FASSUNG
 ANALYSESTELLE P14 NIMBUS MARIA
 MESSAUFBAU STATIV
 FILTER m30lo30hi30li30
 User Login Raquet



	ppm	+/-	Error
Ce	1.000	+/-	140.282
La	1.000	+/-	113.316
Ba	1.000	+/-	119.952
Sb	1.000	+/-	41.279
Sn	288.737	+/-	38.666
Cd	1.000	+/-	19.924
Ag	16.799	+/-	11.283
Bal	881305.750	+/-	1225.630
Nb	1.000	+/-	20.693
Zr	1.000	+/-	69.332
Y	1.000	+/-	16.836
Sr	202.350	+/-	11.657
Rb	1.000	+/-	49.335
Th	1.000	+/-	1055.565
Bi	1.000	+/-	788.363
Au	2296.466	+/-	99.170
As	4514.351	+/-	173.772
Se	1.000	+/-	17.314
Pb	17814.135	+/-	373.328
Hg	1300.091	+/-	48.713
Zn	155.436	+/-	29.202
Cu	956.762	+/-	56.759
Ni	1.000	+/-	40.707
Co	1.000	+/-	98.453
Fe	13800.908	+/-	411.342
Mn	234.506	+/-	114.658
Cr	1.000	+/-	43.049
V	1.000	+/-	44.309
Ti	646.017	+/-	152.974
Ca	9846.222	+/-	294.820
K	2845.628	+/-	223.225
Al	4678.860	+/-	812.667
P	2937.483	+/-	184.632
Si	29831.805	+/-	1025.478
Cl	5340.439	+/-	142.539
S	20987.277	+/-	454.911
Mg	1.000	+/-	7383.874

mRFA -Ergebnisse

XL3t-69288

Reading No 36
 Mode Mining
 Time 2018-05-24 14:08
 Duration 121.64
 Units ppm
 Sigma Value 2
 Sequence Final
 Flags
 INV NR Gm29
 OBJEKT TAFELGEMAELEN
 MATERIAL HOLZ METALL FASSUNG
 ANALYSESTELLE P15 ZEPTER
 MESSAUFBAU STATIV
 FILTER m30lo30hi30li30
 User Login Raquet



	ppm	+/-	Error
Ce	-339.000	+/-	109.958
La	1.000	+/-	50.380
Ba	1.000	+/-	53.754
Sb	1.000	+/-	19.688
Sn	314.933	+/-	15.766
Cd	1.000	+/-	10.370
Ag	7.008	+/-	4.762
Bal	899761.438	+/-	725.905
Nb	1.000	+/-	23.794
Zr	1.000	+/-	54.099
Y	1.000	+/-	12.975
Sr	198.151	+/-	7.161
Rb	29.057	+/-	26.333
Th	1.000	+/-	884.051
Bi	1.000	+/-	594.358
Au	2214.927	+/-	62.462
As	5788.302	+/-	150.267
Se	1.000	+/-	12.535
Pb	21261.752	+/-	323.742
Hg	1.000	+/-	12.685
Zn	108.625	+/-	15.067
Cu	1124.279	+/-	41.783
Ni	1.000	+/-	30.031
Co	1.000	+/-	36.222
Fe	3005.432	+/-	115.438
Mn	177.005	+/-	71.069
Cr	56.410	+/-	19.178
V	1.000	+/-	23.898
Ti	98.957	+/-	85.382
Ca	18478.768	+/-	333.386
K	2456.629	+/-	149.930
Al	1725.941	+/-	524.364
P	7260.724	+/-	192.916
Si	14001.841	+/-	491.053
Cl	3118.025	+/-	65.350
S	18811.801	+/-	317.832
Mg	1.000	+/-	5606.979

mRFA -Ergebnisse

XL3t-69288

Reading No 37
 Mode Mining
 Time 2018-05-24 14:12
 Duration 121.12
 Units ppm
 Sigma Value 2
 Sequence Final
 Flags
 INV NR Gm29
 OBJEKT TAFELGEMAELEN
 MATERIAL HOLZ METALL FASSUNG
 ANALYSESTELLE P16 Pressbrokat
 MESSAUFBAU STATIV
 FILTER m30lo30hi30li30
 User Login Raquet



	ppm	+/-	Error
Ce	-339.000	+/-	182.270
La	1.000	+/-	82.298
Ba	1.000	+/-	87.319
Sb	1.000	+/-	26.972
Sn	20116.500	+/-	328.340
Cd	178.573	+/-	16.573
Ag	70.085	+/-	9.277
Bal	793629.938	+/-	1889.825
Nb	1.000	+/-	31.211
Zr	1.000	+/-	83.109
Y	1.000	+/-	20.893
Sr	121.078	+/-	8.224
Rb	75.015	+/-	41.537
Th	1.000	+/-	1327.818
Bi	1.000	+/-	899.900
Au	6858.208	+/-	161.544
As	4740.769	+/-	194.564
Se	1.000	+/-	20.667
Pb	28653.541	+/-	529.275
Hg	1.000	+/-	20.066
Zn	202.660	+/-	30.712
Cu	8344.795	+/-	194.313
Ni	1.000	+/-	49.058
Co	1.000	+/-	51.235
Fe	3213.413	+/-	148.934
Mn	1.000	+/-	135.204
Cr	105.156	+/-	24.989
V	1.000	+/-	19.423
Ti	144.911	+/-	105.415
Ca	11899.251	+/-	313.192
K	2960.206	+/-	214.178
Al	7768.994	+/-	938.921
P	55588.418	+/-	1048.705
Si	23877.191	+/-	804.813
Cl	2755.030	+/-	70.093
S	28696.264	+/-	559.637
Mg	1.000	+/-	7929.143

mRFA -Ergebnisse

XL3t-69288

Reading No 38
 Mode Mining
 Time 2018-05-24 14:17
 Duration 121.78
 Units ppm
 Sigma Value 2
 Sequence Final
 Flags
 INV NR Gm29
 OBJEKT TAFELGEMAELEN
 MATERIAL HOLZ METALL FASSUNG
 ANALYSESTELLE P17 GEWAND ENGEL
 MESSAUFBAU STATIV
 FILTER m30lo30hi30li30
 User Login Raquet



	ppm	+/-	Error
Ce	-339.000	+/-	137.854
La	1.000	+/-	63.540
Ba	1.000	+/-	67.021
Sb	1.000	+/-	23.644
Sn	128.548	+/-	14.880
Cd	1.000	+/-	7.603
Ag	1.000	+/-	4.610
Bal	835904.938	+/-	1385.967
Nb	33.366	+/-	25.869
Zr	1.000	+/-	85.886
Y	1.000	+/-	21.458
Sr	149.909	+/-	7.988
Rb	1.000	+/-	50.711
Th	1.000	+/-	1296.179
Bi	1.000	+/-	920.863
Au	1.000	+/-	27.965
As	8485.951	+/-	232.884
Se	1.000	+/-	14.609
Pb	37888.176	+/-	639.014
Hg	1.000	+/-	15.344
Zn	344.298	+/-	26.636
Cu	16007.497	+/-	295.528
Ni	1.000	+/-	34.407
Co	39.840	+/-	33.654
Fe	1014.400	+/-	78.485
Mn	1.000	+/-	91.788
Cr	1.000	+/-	31.469
V	1.000	+/-	19.082
Ti	1.000	+/-	83.149
Ca	11096.034	+/-	241.416
K	1528.646	+/-	133.898
Al	10223.209	+/-	846.086
P	1886.354	+/-	131.677
Si	30612.379	+/-	774.439
Cl	2672.463	+/-	61.619
S	28327.467	+/-	505.019
Mg	13656.480	+/-	6777.796

mRFA -Ergebnisse

XL3t-69288

Reading No 39
 Mode Mining
 Time 2018-05-24 14:23
 Duration 121.50
 Units ppm
 Sigma Value 2
 Sequence Final
 Flags
 INV NR Gm29
 OBJEKT TAFELGEMAELEN
 MATERIAL HOLZ METALL FASSUNG
 ANALYSESTELLE P18 ENGEL FLUEGEL
 MESSAUFBAU STATIV
 FILTER m30lo30hi30li30
 User Login Raquet



	ppm	+/-	Error
Ce	-339.000	+/-	103.971
La	1.000	+/-	47.489
Ba	1.000	+/-	50.643
Sb	1.000	+/-	27.057
Sn	537.189	+/-	18.528
Cd	15.974	+/-	6.911
Ag	16.033	+/-	4.808
Bal	887796.000	+/-	851.035
Nb	1.000	+/-	25.230
Zr	1.000	+/-	58.893
Y	1.000	+/-	14.270
Sr	200.753	+/-	7.661
Rb	41.198	+/-	28.755
Th	1.000	+/-	962.225
Bi	1.000	+/-	644.034
Au	2542.031	+/-	71.010
As	6132.457	+/-	163.734
Se	1.000	+/-	13.697
Pb	22847.486	+/-	363.053
Hg	1.000	+/-	14.682
Zn	111.381	+/-	18.796
Cu	6928.740	+/-	142.370
Ni	1.000	+/-	31.875
Co	1.000	+/-	43.545
Fe	5023.437	+/-	154.327
Mn	110.017	+/-	69.891
Cr	40.517	+/-	21.036
V	1.000	+/-	18.983
Ti	221.350	+/-	94.523
Ca	13570.729	+/-	269.025
K	2347.956	+/-	149.827
Al	2047.450	+/-	518.340
P	16041.801	+/-	320.278
Si	11793.084	+/-	457.002
Cl	3438.654	+/-	69.859
S	18195.691	+/-	312.907
Mg	1.000	+/-	7302.743

mRFA -Ergebnisse

XL3t-69288

Reading No 40
 Mode Mining
 Time 2018-05-24 14:28
 Duration 120.09
 Units ppm
 Sigma Value 2
 Sequence Final
 Flags
 INV NR Gm29
 OBJEKT TAFELGEMAELEN
 MATERIAL HOLZ METALL FASSUNG
 ANALYSESTELLE P19 ENGEL AERMEL
 MESSAUFBAU STATIV
 FILTER m30lo30hi30li30
 User Login Raquet

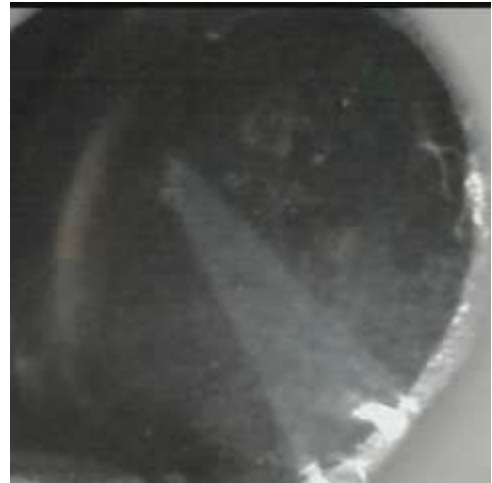


	ppm	+/-	Error
Ce	-339.000	+/-	161.819
La	1.000	+/-	74.119
Ba	1.000	+/-	78.374
Sb	1.000	+/-	33.663
Sn	2830.681	+/-	64.966
Cd	20.390	+/-	10.768
Ag	1.000	+/-	5.463
Bal	843027.375	+/-	1504.024
Nb	1.000	+/-	47.248
Zr	1.000	+/-	103.079
Y	1.000	+/-	25.606
Sr	125.242	+/-	9.392
Rb	1.000	+/-	65.602
Th	1.000	+/-	1807.014
Bi	1.000	+/-	1103.528
Au	1.000	+/-	39.076
As	7927.104	+/-	270.637
Se	1.000	+/-	18.362
Pb	40969.543	+/-	808.417
Hg	116.863	+/-	29.199
Zn	232.675	+/-	37.595
Cu	46329.148	+/-	830.041
Ni	1.000	+/-	40.093
Co	1.000	+/-	59.934
Fe	1925.273	+/-	104.679
Mn	109.320	+/-	76.212
Cr	1.000	+/-	22.332
V	1.000	+/-	17.979
Ti	1.000	+/-	94.270
Ca	5285.175	+/-	201.676
K	1127.219	+/-	166.157
Al	2631.654	+/-	688.500
P	2976.958	+/-	154.552
Si	11991.189	+/-	484.762
Cl	3209.949	+/-	77.972
S	29164.359	+/-	574.596
Mg	1.000	+/-	7468.865

mRFA -Ergebnisse

XL3t-69288

Reading No 41
 Mode Mining
 Time 2018-05-24 14:33
 Duration 122.00
 Units ppm
 Sigma Value 2
 Sequence Final
 Flags
 INV NR Gm29
 OBJEKT TAFELGEMAELEN
 MATERIAL HOLZ METALL FASSUNG
 ANALYSESTELLE P20 MANTEL
 MESSAUFBAU STATIV
 FILTER m30lo30hi30li30
 User Login Raquet



	ppm	+/-	Error
Ce	-339.000	+/-	142.883
La	1.000	+/-	65.791
Ba	1.000	+/-	69.915
Sb	1.000	+/-	29.461
Sn	274.899	+/-	18.175
Cd	1.000	+/-	7.989
Ag	1.000	+/-	4.911
Bal	828050.938	+/-	1496.673
Nb	1.000	+/-	36.613
Zr	1.000	+/-	80.733
Y	1.000	+/-	19.932
Sr	150.301	+/-	8.175
Rb	1.000	+/-	42.705
Th	1.000	+/-	1134.706
Bi	1.000	+/-	985.657
Au	1.000	+/-	27.809
As	5254.365	+/-	198.899
Se	1.000	+/-	16.690
Pb	29622.283	+/-	510.607
Hg	1.000	+/-	15.437
Zn	1.000	+/-	33.033
Cu	64320.707	+/-	924.208
Ni	1.000	+/-	35.392
Co	1.000	+/-	35.199
Fe	1893.211	+/-	91.884
Mn	1.000	+/-	67.030
Cr	1.000	+/-	21.034
V	1.000	+/-	17.001
Ti	1.000	+/-	144.176
Ca	5842.182	+/-	155.561
K	2619.712	+/-	161.146
Al	4528.051	+/-	673.622
P	1662.841	+/-	112.840
Si	17440.416	+/-	510.017
Cl	3414.779	+/-	65.640
S	21688.574	+/-	340.036
Mg	13236.711	+/-	7080.829