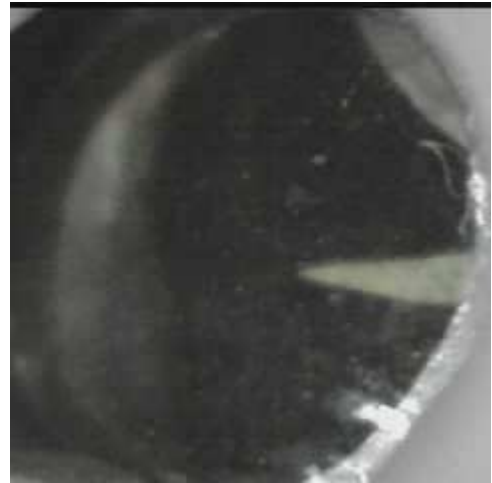


mRFA -Ergebnisse

XL3t-69288

Reading No 7
 Mode Mining
 Time 2018-06-21 12:00
 Duration 120.43
 Units ppm
 Sigma Value 2
 Sequence Final
 Flags
 INV NR Gm26
 OBJEKT TAFELGEMAELEN
 MATERIAL HOLZ METALL FASSUNG
 ANALYSESTELLE P1 KLEID MARIA
 MESSAUFBAU STATIV
 FILTER m30lo30hi30li30
 User Login Raquet

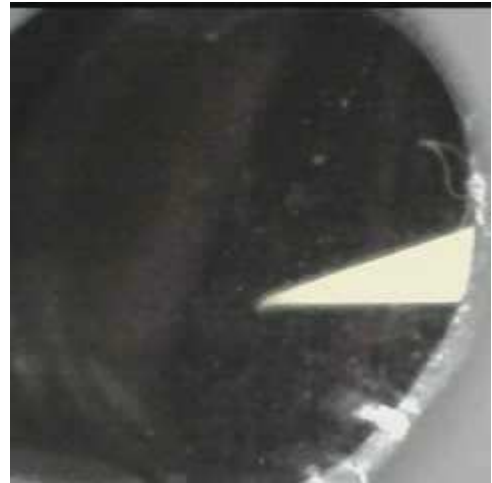


	ppm	+/-	Error
Ce	-339.000	+/-	94.381
La	1.000	+/-	43.134
Ba	1.000	+/-	46.449
Sb	29.052	+/-	16.851
Sn	10.516	+/-	8.592
Cd	16.114	+/-	6.503
Ag	1.000	+/-	3.388
Bal	886785.688	+/-	784.318
Nb	1.000	+/-	8.129
Zr	1.000	+/-	31.828
Y	1.000	+/-	7.466
Sr	96.054	+/-	4.762
Rb	1.000	+/-	13.664
Th	1.000	+/-	463.720
Bi	1.000	+/-	417.553
Au	1.000	+/-	12.573
As	1222.643	+/-	77.961
Se	1.000	+/-	8.915
Pb	6881.929	+/-	103.628
Hg	1.000	+/-	6.590
Zn	1.000	+/-	30.804
Cu	75403.797	+/-	740.998
Ni	1.000	+/-	26.506
Co	1.000	+/-	22.543
Fe	641.873	+/-	49.927
Mn	1.000	+/-	49.737
Cr	1.000	+/-	16.740
V	1.000	+/-	16.536
Ti	1.000	+/-	130.577
Ca	10694.778	+/-	178.852
K	1402.961	+/-	115.378
Al	1126.025	+/-	363.520
P	359.796	+/-	54.574
Si	6741.651	+/-	247.013
Cl	2108.787	+/-	33.342
S	6478.364	+/-	82.373
Mg	1.000	+/-	5886.834

mRFA -Ergebnisse

XL3t-69288

Reading No 8
 Mode Mining
 Time 2018-06-21 12:05
 Duration 122.34
 Units ppm
 Sigma Value 2
 Sequence Final
 Flags
 INV NR Gm26
 OBJEKT TAFELGEMAELEN
 MATERIAL HOLZ METALL FASSUNG
 ANALYSESTELLE P2 MANTEL JOHANNES
 MESSAUFBAU STATIV
 FILTER m30lo30hi30li30
 User Login Raquet



	ppm	+/-	Error
Ce	-339.000	+/-	86.446
La	1.000	+/-	39.790
Ba	1.000	+/-	42.559
Sb	1.000	+/-	14.374
Sn	12.649	+/-	7.963
Cd	1.000	+/-	8.579
Ag	1.000	+/-	4.580
Bal	932737.375	+/-	468.930
Nb	1.000	+/-	18.391
Zr	1.000	+/-	42.012
Y	1.000	+/-	10.019
Sr	106.635	+/-	6.169
Rb	1.000	+/-	22.659
Th	1.000	+/-	601.523
Bi	1.000	+/-	507.747
Au	1.000	+/-	30.469
As	4250.779	+/-	113.416
Se	1.000	+/-	14.653
Pb	15209.101	+/-	207.495
Hg	2020.193	+/-	38.098
Zn	347.469	+/-	22.726
Cu	4590.313	+/-	91.563
Ni	1.000	+/-	27.066
Co	1.000	+/-	22.785
Fe	493.442	+/-	54.669
Mn	112.975	+/-	63.748
Cr	1.000	+/-	18.146
V	1.000	+/-	14.189
Ti	1.000	+/-	94.966
Ca	19166.533	+/-	304.960
K	3616.434	+/-	158.075
Al	1256.009	+/-	360.781
P	567.872	+/-	64.541
Si	5640.955	+/-	257.040
Cl	3150.678	+/-	54.534
S	6720.676	+/-	108.408
Mg	1.000	+/-	3516.133

mRFA -Ergebnisse

XL3t-69288

Reading No 9
 Mode Mining
 Time 2018-06-21 12:12
 Duration 121.20
 Units ppm
 Sigma Value 2
 Sequence Final
 Flags 3mm
 INV NR Gm26
 OBJEKT TAFELGEMAELEN
 MATERIAL HOLZ METALL FASSUNG
 ANALYSESTELLE P3 KRAGEN REITER
 MESSAUFBAU STATIV
 FILTER m30lo30hi30li30
 User Login Raquet



	ppm	+/-	Error
Ce	1.000	+/-	82.752
La	1.000	+/-	68.388
Ba	1.000	+/-	72.395
Sb	1.000	+/-	34.881
Sn	18.101	+/-	17.348
Cd	14.852	+/-	10.593
Ag	6.959	+/-	6.884
Bal	897242.750	+/-	948.827
Nb	1.000	+/-	8.792
Zr	1.000	+/-	27.226
Y	1.000	+/-	6.193
Sr	166.251	+/-	7.166
Rb	1.000	+/-	12.717
Th	1.000	+/-	384.569
Bi	1.000	+/-	361.072
Au	1.000	+/-	13.449
As	882.647	+/-	64.700
Se	1.000	+/-	9.014
Pb	3918.826	+/-	80.956
Hg	12.496	+/-	10.218
Zn	1.000	+/-	17.597
Cu	2240.005	+/-	77.996
Ni	1.000	+/-	31.742
Co	1.000	+/-	50.510
Fe	3056.956	+/-	152.153
Mn	1.000	+/-	82.620
Cr	1.000	+/-	27.197
V	1.000	+/-	28.749
Ti	1.000	+/-	154.078
Ca	22236.965	+/-	413.768
K	6415.410	+/-	262.946
Al	8111.810	+/-	821.519
P	206.091	+/-	102.718
Si	42079.234	+/-	1079.846
Cl	4771.993	+/-	105.224
S	8618.741	+/-	163.897
Mg	1.000	+/-	4613.818

mRFA -Ergebnisse

XL3t-69288

Reading No 10
 Mode Mining
 Time 2018-06-21 12:17
 Duration 120.38
 Units ppm
 Sigma Value 2
 Sequence Final
 Flags 3mm
 INV NR Gm26
 OBJEKT TAFELGEMAELEN
 MATERIAL HOLZ METALL FASSUNG
 ANALYSESTELLE P4 MUSTER AERMEL REITER
 MESSAUFBAU STATIV
 FILTER m30lo30hi30li30
 User Login Raquet



	ppm	+/-	Error
Ce	1.000	+/-	45.910
La	1.000	+/-	37.811
Ba	1.000	+/-	39.660
Sb	1.000	+/-	15.338
Sn	94.114	+/-	10.898
Cd	13.005	+/-	5.662
Ag	1.000	+/-	2.830
Bal	873876.938	+/-	762.145
Nb	1.000	+/-	10.371
Zr	1.000	+/-	29.407
Y	1.000	+/-	6.672
Sr	154.754	+/-	5.180
Rb	1.000	+/-	21.229
Th	1.000	+/-	436.577
Bi	1.000	+/-	346.104
Au	1.000	+/-	16.594
As	2321.888	+/-	71.414
Se	1.000	+/-	9.606
Pb	10204.877	+/-	125.478
Hg	399.646	+/-	15.619
Zn	86.364	+/-	10.969
Cu	557.175	+/-	25.853
Ni	1.000	+/-	24.612
Co	1.000	+/-	63.601
Fe	14642.786	+/-	247.120
Mn	1.000	+/-	56.186
Cr	39.507	+/-	20.158
V	31.516	+/-	17.908
Ti	173.030	+/-	86.738
Ca	21030.721	+/-	291.638
K	5807.669	+/-	199.680
Al	7361.668	+/-	616.455
P	1379.587	+/-	92.723
Si	30768.502	+/-	649.034
Cl	5220.500	+/-	82.687
S	13170.981	+/-	168.317
Mg	12664.788	+/-	4979.048

mRFA -Ergebnisse

XL3t-69288

Reading No 11
 Mode Mining
 Time 2018-06-21 12:22
 Duration 121.80
 Units ppm
 Sigma Value 2
 Sequence Final
 Flags 3mm
 INV NR Gm26
 OBJEKT TAFELGEMAELEN
 MATERIAL HOLZ METALL FASSUNG
 ANALYSESTELLE P5 ZIER PFERD
 MESSAUFBAU STATIV
 FILTER m30lo30hi30li30
 User Login Raquet



	ppm	+/-	Error
Ce	1.000	+/-	189.520
La	1.000	+/-	155.018
Ba	1.000	+/-	160.554
Sb	1.000	+/-	53.871
Sn	1.000	+/-	32.811
Cd	1.000	+/-	17.832
Ag	1.000	+/-	11.939
Bal	856776.750	+/-	1861.572
Nb	70.724	+/-	43.532
Zr	1.000	+/-	138.749
Y	1.000	+/-	35.281
Sr	50.839	+/-	9.645
Rb	1.000	+/-	76.840
Th	1.000	+/-	2011.656
Bi	1.000	+/-	1518.289
Au	1.000	+/-	46.298
As	7200.152	+/-	308.765
Se	1.000	+/-	20.484
Pb	53940.004	+/-	1230.131
Hg	1.000	+/-	27.690
Zn	140.382	+/-	34.989
Cu	23975.584	+/-	559.418
Ni	1.000	+/-	44.320
Co	1.000	+/-	59.575
Fe	200.902	+/-	77.443
Mn	116.755	+/-	100.684
Cr	1.000	+/-	30.548
V	1.000	+/-	23.191
Ti	1.000	+/-	108.290
Ca	23655.541	+/-	572.574
K	2653.534	+/-	212.928
Al	2045.998	+/-	677.561
P	2410.643	+/-	152.897
Si	6983.205	+/-	465.583
Cl	5295.090	+/-	149.265
S	14484.042	+/-	351.746
Mg	1.000	+/-	6880.698

mRFA -Ergebnisse

XL3t-69288

Reading No 12
 Mode Mining
 Time 2018-06-21 12:28
 Duration 121.51
 Units ppm
 Sigma Value 2
 Sequence Final
 Flags 3mm
 INV NR Gm26
 OBJEKT TAFELGEMAELEN
 MATERIAL HOLZ METALL FASSUNG
 ANALYSESTELLE P6 MANTEL MARIA
 MESSAUFBAU STATIV
 FILTER m30lo30hi30li30
 User Login Raquet



	ppm	+/-	Error
Ce	1.000	+/-	102.139
La	1.000	+/-	82.670
Ba	1.000	+/-	87.917
Sb	1.000	+/-	30.342
Sn	28.622	+/-	21.050
Cd	21.597	+/-	12.868
Ag	1.000	+/-	10.022
Bal	916546.500	+/-	804.226
Nb	1.000	+/-	21.065
Zr	1.000	+/-	51.347
Y	1.000	+/-	12.267
Sr	90.422	+/-	6.164
Rb	1.000	+/-	26.584
Th	1.000	+/-	711.891
Bi	1.000	+/-	627.177
Au	1.000	+/-	19.918
As	2974.387	+/-	127.447
Se	1.000	+/-	15.204
Pb	12998.313	+/-	243.892
Hg	1.000	+/-	11.727
Zn	16.976	+/-	14.355
Cu	4770.125	+/-	134.030
Ni	1.000	+/-	31.185
Co	1.000	+/-	33.682
Fe	497.095	+/-	77.594
Mn	1.000	+/-	77.417
Cr	1.000	+/-	31.915
V	1.000	+/-	19.590
Ti	1.000	+/-	105.191
Ca	15139.786	+/-	361.861
K	4878.163	+/-	252.818
Al	4609.120	+/-	663.512
P	445.054	+/-	104.491
Si	22513.025	+/-	789.222
Cl	3517.250	+/-	94.347
S	10953.638	+/-	231.555
Mg	1.000	+/-	6339.119

mRFA -Ergebnisse

XL3t-69288

Reading No 13
 Mode Mining
 Time 2018-06-21 12:35
 Duration 120.02
 Units ppm
 Sigma Value 2
 Sequence Final
 Flags 3mm
 INV NR Gm26
 OBJEKT TAFELGEMAELEN
 MATERIAL HOLZ METALL FASSUNG
 ANALYSESTELLE P7 KLEID KNIEENDE
 MESSAUFBAU STATIV
 FILTER m30lo30hi30li30
 User Login Raquet



	ppm	+/-	Error
Ce	1.000	+/-	97.257
La	1.000	+/-	79.517
Ba	1.000	+/-	83.720
Sb	1.000	+/-	29.300
Sn	1.000	+/-	19.535
Cd	1.000	+/-	18.592
Ag	1.000	+/-	6.376
Bal	925749.188	+/-	698.805
Nb	1.000	+/-	23.545
Zr	1.000	+/-	51.745
Y	1.000	+/-	12.177
Sr	110.119	+/-	6.532
Rb	1.000	+/-	28.845
Th	1.000	+/-	716.849
Bi	1.000	+/-	643.935
Au	1.000	+/-	21.066
As	3446.271	+/-	130.764
Se	1.000	+/-	15.043
Pb	14048.039	+/-	255.455
Hg	1.000	+/-	12.970
Zn	331.653	+/-	24.291
Cu	1035.718	+/-	51.904
Ni	1.000	+/-	31.216
Co	1.000	+/-	31.396
Fe	441.162	+/-	74.468
Mn	1.000	+/-	110.550
Cr	1.000	+/-	25.680
V	1.000	+/-	18.127
Ti	1.000	+/-	145.028
Ca	17693.428	+/-	393.623
K	6014.701	+/-	265.284
Al	3541.411	+/-	606.572
P	714.284	+/-	98.804
Si	16007.604	+/-	657.473
Cl	4032.013	+/-	104.250
S	6834.381	+/-	156.670
Mg	1.000	+/-	4460.325

mRFA -Ergebnisse

XL3t-69288

Reading No 14
 Mode Mining
 Time 2018-06-21 12:41
 Duration 120.35
 Units ppm
 Sigma Value 2
 Sequence Final
 Flags
 INV NR Gm26
 OBJEKT TAFELGEMAELEN
 MATERIAL HOLZ METALL FASSUNG
 ANALYSESTELLE P7 KLEID KNIEENDE
 MESSAUFBAU STATIV
 FILTER m30lo30hi30li30
 User Login Raquet



	ppm	+/-	Error
Ce	-339.000	+/-	74.899
La	1.000	+/-	34.232
Ba	1.000	+/-	36.603
Sb	1.000	+/-	13.467
Sn	14.343	+/-	6.995
Cd	10.999	+/-	5.120
Ag	1.000	+/-	3.822
Bal	923911.813	+/-	486.732
Nb	16.607	+/-	10.980
Zr	1.000	+/-	38.752
Y	1.000	+/-	8.972
Sr	102.050	+/-	4.343
Rb	1.000	+/-	24.520
Th	1.000	+/-	557.524
Bi	1.000	+/-	447.741
Au	1.000	+/-	14.255
As	3998.381	+/-	104.307
Se	1.000	+/-	8.982
Pb	15201.626	+/-	193.091
Hg	1.000	+/-	8.343
Zn	298.095	+/-	15.703
Cu	1083.068	+/-	35.738
Ni	1.000	+/-	24.065
Co	1.000	+/-	19.418
Fe	380.279	+/-	48.039
Mn	145.971	+/-	59.357
Cr	1.000	+/-	23.047
V	1.000	+/-	11.638
Ti	1.000	+/-	76.455
Ca	17072.293	+/-	267.195
K	5611.484	+/-	176.030
Al	4556.886	+/-	459.539
P	879.193	+/-	71.320
Si	16727.223	+/-	440.200
Cl	2619.873	+/-	47.117
S	7369.800	+/-	116.158
Mg	1.000	+/-	5315.269