

mRFA -Ergebnisse

XL3t-69288

Reading No 1
Mode Mining
Time 2017-11-16 12:20
Duration 120.88
Units ppm
Sigma Value 2
Sequence Final
Flags
INV NR Pl.O.2065a
OBJEKT TAFELGEMAELENDE
MATERIAL HOLZ METALL FASSUNG
ANALYSESTELLE P1 NIMBUS MARTHA
MESSAUFBAU STATIV
FILTER m30lo30hi30li30
User Login Raquet



	ppm	+/-	Error
Ce	-339.000	+/-	91.763
La	1.000	+/-	42.145
Ba	1.000	+/-	44.928
Sb	1.000	+/-	15.057
Sn	426.482	+/-	16.960
Cd	18.389	+/-	6.427
Ag	386.499	+/-	12.816
Bal	850545.375	+/-	1012.445
Nb	55.003	+/-	15.688
Zr	1.000	+/-	57.187
Y	1.000	+/-	13.055
Sr	106.060	+/-	5.460
Rb	1.000	+/-	25.496
Th	1.000	+/-	767.594
Bi	1.000	+/-	852.232
Au	181.507	+/-	29.179
As	4851.851	+/-	145.818
Se	15.745	+/-	11.843
Pb	24671.488	+/-	356.457
Hg	1.000	+/-	12.444
Zn	65.629	+/-	10.582
Cu	309.841	+/-	23.559
Ni	1.000	+/-	29.008
Co	1.000	+/-	25.105
Fe	578.346	+/-	60.379
Mn	1.000	+/-	59.856
Cr	1.000	+/-	29.988
V	1.000	+/-	13.221
Ti	1.000	+/-	69.582
Ca	60571.098	+/-	873.163
K	886.695	+/-	149.158
Al	3403.646	+/-	750.823
P	5624.599	+/-	202.352
Si	15290.904	+/-	580.615
Cl	3494.604	+/-	72.764
S	28516.314	+/-	440.925
Mg	1.000	+/-	7109.111

mRFA -Ergebnisse

XL3t-69288

Reading No 2
Mode Mining
Time 2017-11-16 12:24
Duration 120.19
Units ppm
Sigma Value 2
Sequence Final
Flags
INV NR Pl.O.2065a
OBJEKT TAFELGEMAELEN
MATERIAL HOLZ METALL FASSUNG
ANALYSESTELLE P2 FLUEGELRAHMEN
MESSAUFBAU STATIV
FILTER m30lo30hi30li30
User Login Raquet



	ppm	+/-	Error
Ce	-339.000	+/-	111.041
La	1.000	+/-	51.151
Ba	1.000	+/-	54.508
Sb	1.000	+/-	27.945
Sn	10.104	+/-	9.846
Cd	1.000	+/-	6.299
Ag	1.000	+/-	4.971
Bal	824774.688	+/-	1250.783
Nb	1.000	+/-	16.718
Zr	1.000	+/-	43.273
Y	1.000	+/-	10.713
Sr	150.479	+/-	10.279
Rb	1.000	+/-	19.984
Th	1.000	+/-	621.240
Bi	1.000	+/-	633.036
Au	1.000	+/-	56.867
As	4113.875	+/-	119.302
Se	22.398	+/-	15.998
Pb	12598.525	+/-	194.075
Hg	7310.670	+/-	112.097
Zn	576.579	+/-	36.629
Cu	215.972	+/-	23.703
Ni	1.000	+/-	35.449
Co	1.000	+/-	47.179
Fe	791.526	+/-	74.669
Mn	123.984	+/-	82.183
Cr	1.000	+/-	19.885
V	16.750	+/-	16.739
Ti	1.000	+/-	85.609
Ca	28110.063	+/-	446.739
K	197.322	+/-	98.952
Al	1653.921	+/-	823.461
P	33901.945	+/-	563.008
Si	13944.474	+/-	639.418
Cl	3587.284	+/-	75.248
S	67899.359	+/-	947.125
Mg	1.000	+/-	11510.691

mRFA -Ergebnisse

XL3t-69288

Reading No 3
Mode Mining
Time 2017-11-16 12:29
Duration 120.93
Units ppm
Sigma Value 2
Sequence Final
Flags
INV NR Pl.O.2065a
OBJEKT TAFELGEMAELEN
MATERIAL HOLZ METALL FASSUNG
ANALYSESTELLE P3 FLUEGELRAHMEN KEHLE
MESSAUFBAU STATIV
FILTER m30lo30hi30li30
User Login Raquet



	ppm	+/-	Error
Ce	-339.000	+/-	86.470
La	1.000	+/-	39.665
Ba	1.000	+/-	42.769
Sb	1.000	+/-	19.469
Sn	1.000	+/-	11.406
Cd	11.085	+/-	6.014
Ag	7.820	+/-	4.050
Bal	775899.188	+/-	1081.665
Nb	1.000	+/-	1.903
Zr	1.000	+/-	7.319
Y	1.000	+/-	1.462
Sr	292.283	+/-	5.554
Rb	15.434	+/-	4.544
Th	1.000	+/-	109.159
Bi	1.000	+/-	87.105
Au	2343.580	+/-	42.075
As	92.394	+/-	14.714
Se	1.000	+/-	5.186
Pb	410.500	+/-	12.716
Hg	6.655	+/-	4.487
Zn	86.697	+/-	12.122
Cu	210.048	+/-	16.858
Ni	1.000	+/-	22.541
Co	1.000	+/-	37.282
Fe	6373.979	+/-	124.611
Mn	1.000	+/-	55.075
Cr	83.616	+/-	19.514
V	1.000	+/-	30.013
Ti	924.854	+/-	122.985
Ca	131499.781	+/-	791.452
K	3677.882	+/-	163.312
Al	9157.794	+/-	1065.758
P	23933.334	+/-	318.080
Si	36239.836	+/-	842.945
Cl	586.623	+/-	32.518
S	8146.609	+/-	107.845
Mg	1.000	+/-	8072.890

mRFA -Ergebnisse

XL3t-69288

Reading No 4
Mode Mining
Time 2017-11-16 12:32
Duration 120.20
Units ppm
Sigma Value 2
Sequence Final
Flags
INV NR Pl.O.2065a
OBJEKT TAFELGEMAELEN
MATERIAL HOLZ METALL FASSUNG
ANALYSESTELLE P4 FLUEGELRAHMEN WULST
MESSAUFBAU STATIV
FILTER m30lo30hi30li30
User Login Raquet



	ppm	+/-	Error
Ce	-339.000	+/-	74.927
La	1.000	+/-	34.504
Ba	1.000	+/-	37.113
Sb	20.255	+/-	13.574
Sn	10.376	+/-	7.102
Cd	6.159	+/-	5.105
Ag	20.144	+/-	3.944
Bal	775071.813	+/-	1101.613
Nb	1.000	+/-	2.595
Zr	1.000	+/-	10.537
Y	1.000	+/-	2.162
Sr	245.224	+/-	5.138
Rb	17.501	+/-	5.771
Th	1.000	+/-	157.724
Bi	1.000	+/-	126.629
Au	2608.330	+/-	45.334
As	328.196	+/-	24.928
Se	1.000	+/-	5.862
Pb	1214.445	+/-	22.520
Hg	1.000	+/-	4.360
Zn	152.446	+/-	14.040
Cu	954.919	+/-	29.507
Ni	1.000	+/-	22.080
Co	1.000	+/-	36.943
Fe	6093.552	+/-	122.926
Mn	1.000	+/-	53.544
Cr	73.773	+/-	17.949
V	1.000	+/-	29.903
Ti	786.156	+/-	108.272
Ca	114476.023	+/-	746.466
K	2991.249	+/-	145.379
Al	13458.504	+/-	1082.468
P	23355.553	+/-	304.203
Si	43003.172	+/-	847.282
Cl	2305.053	+/-	43.677
S	12807.200	+/-	135.459
Mg	1.000	+/-	7010.268

mRFA -Ergebnisse

XL3t-69288

Reading No 5
Mode Mining
Time 2017-11-16 12:37
Duration 120.46
Units ppm
Sigma Value 2
Sequence Final
Flags
INV NR Pl.O.2065a
OBJEKT TAFELGEMAELEN
MATERIAL HOLZ METALL FASSUNG
ANALYSESTELLE P5 SCHREINRAHMEN PLATTE
MESSAUFBAU STATIV
FILTER m30lo30hi30li30
User Login Raquet

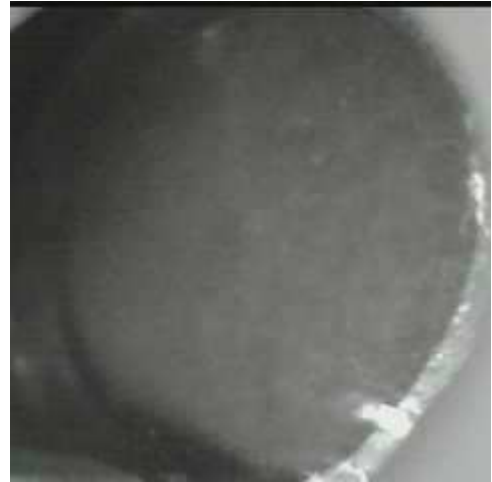


	ppm	+/-	Error
Ce	-339.000	+/-	104.105
La	1.000	+/-	47.878
Ba	1.000	+/-	51.092
Sb	42.399	+/-	18.323
Sn	1.000	+/-	13.803
Cd	9.967	+/-	6.767
Ag	12.013	+/-	4.744
Bal	834739.813	+/-	1095.255
Nb	35.705	+/-	14.933
Zr	1.000	+/-	51.653
Y	1.000	+/-	12.366
Sr	41.548	+/-	4.802
Rb	1.000	+/-	29.900
Th	1.000	+/-	743.849
Bi	1.000	+/-	651.591
Au	772.305	+/-	42.219
As	4450.628	+/-	135.611
Se	1.000	+/-	11.716
Pb	21665.875	+/-	302.609
Hg	589.916	+/-	22.806
Zn	98.574	+/-	14.830
Cu	115.757	+/-	18.322
Ni	1.000	+/-	29.844
Co	1.000	+/-	34.769
Fe	2410.818	+/-	103.038
Mn	1.000	+/-	72.903
Cr	40.361	+/-	18.793
V	1.000	+/-	15.339
Ti	1.000	+/-	81.131
Ca	71876.438	+/-	937.081
K	1244.950	+/-	129.995
Al	4659.466	+/-	790.103
P	11665.063	+/-	262.740
Si	18090.854	+/-	611.237
Cl	2020.884	+/-	48.477
S	25416.660	+/-	361.831
Mg	1.000	+/-	8138.473

mRFA -Ergebnisse

XL3t-69288

Reading No 6
Mode Mining
Time 2017-11-16 12:41
Duration 120.08
Units ppm
Sigma Value 2
Sequence Final
Flags
INV NR Pl.O.2065a
OBJEKT TAFELGEMAELEN
MATERIAL HOLZ METALL FASSUNG
ANALYSESTELLE P6 SCHREINRAHMEN KEHLE
MESSAUFBAU STATIV
FILTER m30lo30hi30li30
User Login Raquet



	ppm	+/-	Error
Ce	-339.000	+/-	107.955
La	1.000	+/-	49.546
Ba	1.000	+/-	52.584
Sb	47.042	+/-	18.988
Sn	1.000	+/-	11.704
Cd	9.669	+/-	6.930
Ag	1.000	+/-	4.493
Bal	874808.063	+/-	944.257
Nb	44.233	+/-	20.144
Zr	1.000	+/-	67.378
Y	1.000	+/-	16.669
Sr	29.115	+/-	4.689
Rb	1.000	+/-	34.924
Th	1.000	+/-	941.214
Bi	1.000	+/-	785.549
Au	1.000	+/-	24.915
As	7789.852	+/-	189.907
Se	1.000	+/-	19.584
Pb	31428.309	+/-	466.007
Hg	1.000	+/-	16.919
Zn	103.949	+/-	11.638
Cu	86.835	+/-	17.667
Ni	1.000	+/-	30.564
Co	1.000	+/-	35.163
Fe	1334.425	+/-	83.066
Mn	1.000	+/-	81.488
Cr	26.970	+/-	16.991
V	1.000	+/-	17.643
Ti	1.000	+/-	67.350
Ca	10623.195	+/-	217.178
K	370.839	+/-	91.399
Al	2950.824	+/-	627.723
P	3349.188	+/-	167.265
Si	16988.334	+/-	555.339
Cl	3224.426	+/-	68.891
S	39979.813	+/-	651.039
Mg	6804.888	+/-	6694.639

mRFA -Ergebnisse

XL3t-69288

Reading No 7
Mode Mining
Time 2017-11-16 12:45
Duration 121.04
Units ppm
Sigma Value 2
Sequence Final
Flags
INV NR Pl.O.2065a
OBJEKT TAFELGEMAELEN
MATERIAL HOLZ METALL FASSUNG
ANALYSESTELLE P7 SCHREIN HINTERGRUND
MESSAUFBAU STATIV
FILTER m30lo30hi30li30
User Login Raquet



	ppm	+/-	Error
Ce	-339.000	+/-	53.813
La	1.000	+/-	24.701
Ba	1.000	+/-	26.674
Sb	1.000	+/-	11.757
Sn	8.154	+/-	5.247
Cd	19.068	+/-	4.170
Ag	5.907	+/-	2.639
Bal	797002.625	+/-	855.088
Nb	7.669	+/-	1.770
Zr	5.736	+/-	3.920
Y	2.062	+/-	1.259
Sr	50.835	+/-	1.983
Rb	6.701	+/-	1.860
Th	1.000	+/-	51.886
Bi	1.000	+/-	45.541
Au	1.000	+/-	2.994
As	25.446	+/-	5.451
Se	1.000	+/-	1.002
Pb	51.815	+/-	4.321
Hg	3.548	+/-	1.560
Zn	7.991	+/-	5.320
Cu	590.009	+/-	19.976
Ni	1.000	+/-	16.368
Co	1.000	+/-	31.741
Fe	6755.022	+/-	107.789
Mn	1.000	+/-	38.994
Cr	22.150	+/-	14.543
V	30.830	+/-	13.487
Ti	1.000	+/-	97.017
Ca	119810.961	+/-	628.607
K	10755.241	+/-	219.911
Al	4999.521	+/-	835.326
P	1.000	+/-	98.392
Si	38366.680	+/-	782.867
Cl	745.434	+/-	28.824
S	9477.448	+/-	108.246
Mg	11249.190	+/-	7272.149

mRFA -Ergebnisse

XL3t-69288

Reading No 8
Mode Mining
Time 2017-11-16 12:54
Duration 121.45
Units ppm
Sigma Value 2
Sequence Final
Flags
INV NR Pl.O.2065a
OBJEKT TAFELGEMAELEN
MATERIAL HOLZ METALL FASSUNG
ANALYSESTELLE P8 NIMBUS APOSTEL
MESSAUFBAU STATIV
FILTER m30lo30hi30li30
User Login Raquet



	ppm	+/-	Error
Ce	-339.000	+/-	98.438
La	1.000	+/-	45.196
Ba	1.000	+/-	48.393
Sb	1.000	+/-	18.926
Sn	336.796	+/-	16.923
Cd	20.454	+/-	6.850
Ag	604.220	+/-	16.910
Bal	868396.000	+/-	965.436
Nb	28.583	+/-	16.447
Zr	1.000	+/-	56.521
Y	1.000	+/-	13.717
Sr	154.196	+/-	6.796
Rb	1.000	+/-	32.843
Th	1.000	+/-	803.104
Bi	1.000	+/-	623.455
Au	346.583	+/-	36.353
As	5929.352	+/-	155.173
Se	1.000	+/-	12.920
Pb	23949.168	+/-	345.570
Hg	192.409	+/-	19.716
Zn	243.161	+/-	18.577
Cu	2156.755	+/-	60.310
Ni	1.000	+/-	31.735
Co	1.000	+/-	41.244
Fe	4194.260	+/-	136.742
Mn	78.265	+/-	66.718
Cr	1.000	+/-	29.517
V	1.000	+/-	19.806
Ti	1.000	+/-	134.689
Ca	33956.602	+/-	520.756
K	3098.897	+/-	174.669
Al	3873.962	+/-	613.913
P	1992.250	+/-	119.738
Si	22125.160	+/-	599.687
Cl	3201.573	+/-	62.494
S	18039.527	+/-	281.317
Mg	7081.837	+/-	5947.825

mRFA -Ergebnisse

XL3t-69288

Reading No 9
Mode Mining
Time 2017-11-16 12:59
Duration 120.53
Units ppm
Sigma Value 2
Sequence Final
Flags
INV NR Pl.O.2065a
OBJEKT TAFELGEMAELEN
MATERIAL HOLZ METALL FASSUNG
ANALYSESTELLE P9 KLEID MARTHA
MESSAUFBAU STATIV
FILTER m30lo30hi30li30
User Login Raquet



	ppm	+/-	Error
Ce	-339.000	+/-	77.585
La	1.000	+/-	35.470
Ba	1.000	+/-	38.135
Sb	1.000	+/-	20.851
Sn	673.833	+/-	17.837
Cd	22.086	+/-	5.707
Ag	381.008	+/-	11.157
Bal	891033.250	+/-	681.440
Nb	18.655	+/-	10.017
Zr	1.000	+/-	35.714
Y	1.000	+/-	8.315
Sr	141.927	+/-	5.001
Rb	1.000	+/-	20.399
Th	1.000	+/-	519.305
Bi	1.000	+/-	493.663
Au	362.106	+/-	25.446
As	3133.105	+/-	95.506
Se	1.000	+/-	9.695
Pb	12905.497	+/-	167.935
Hg	1.000	+/-	7.730
Zn	50.052	+/-	13.254
Cu	7493.520	+/-	125.796
Ni	1.000	+/-	25.431
Co	1.000	+/-	21.166
Fe	365.995	+/-	47.386
Mn	1.000	+/-	52.993
Cr	1.000	+/-	20.281
V	1.000	+/-	12.265
Ti	1.000	+/-	65.001
Ca	53317.215	+/-	642.922
K	1394.947	+/-	138.285
Al	1542.722	+/-	552.917
P	2189.737	+/-	120.567
Si	10103.010	+/-	424.943
Cl	2891.144	+/-	54.886
S	11980.184	+/-	173.069
Mg	1.000	+/-	5740.715

mRFA -Ergebnisse

XL3t-69288

Reading No 10
Mode Mining
Time 2017-11-16 13:03
Duration 120.60
Units ppm
Sigma Value 2
Sequence Final
Flags
INV NR Pl.O.2065a
OBJEKT TAFELGEMAELEN
MATERIAL HOLZ METALL FASSUNG
ANALYSESTELLE P10 KLEID MAGDA
MESSAUFBAU STATIV
FILTER m30lo30hi30li30
User Login Raquet



	ppm	+/-	Error
Ce	-339.000	+/-	78.111
La	1.000	+/-	35.839
Ba	1.000	+/-	38.401
Sb	14.628	+/-	14.044
Sn	412.502	+/-	15.442
Cd	19.438	+/-	5.782
Ag	424.186	+/-	12.427
Bal	885006.313	+/-	657.598
Nb	15.736	+/-	7.581
Zr	1.000	+/-	27.208
Y	1.000	+/-	6.197
Sr	158.507	+/-	4.698
Rb	1.000	+/-	15.802
Th	1.000	+/-	399.638
Bi	1.000	+/-	409.110
Au	498.628	+/-	24.587
As	2483.802	+/-	73.867
Se	1.000	+/-	7.845
Pb	8765.228	+/-	108.159
Hg	1.000	+/-	5.888
Zn	54.674	+/-	9.183
Cu	520.223	+/-	24.571
Ni	1.000	+/-	23.766
Co	1.000	+/-	19.732
Fe	383.047	+/-	46.093
Mn	1.000	+/-	51.523
Cr	19.970	+/-	16.249
V	1.000	+/-	12.008
Ti	1.000	+/-	65.534
Ca	70342.953	+/-	746.811
K	1856.440	+/-	148.843
Al	1177.163	+/-	540.916
P	2198.637	+/-	117.100
Si	12242.289	+/-	446.677
Cl	2190.191	+/-	44.689
S	11215.351	+/-	150.722
Mg	1.000	+/-	5720.035

mRFA -Ergebnisse

XL3t-69288

Reading No 11
Mode Mining
Time 2017-11-16 13:08
Duration 120.73
Units ppm
Sigma Value 2
Sequence Final
Flags
INV NR Pl.O.2065a
OBJEKT TAFELGEMAELEN
MATERIAL HOLZ METALL FASSUNG
ANALYSESTELLE P11 KLEID MAGDA
MESSAUFBAU STATIV
FILTER m30lo30hi30li30
User Login Raquet



	ppm	+/-	Error
Ce	-339.000	+/-	78.717
La	1.000	+/-	36.068
Ba	1.000	+/-	38.761
Sb	21.312	+/-	14.217
Sn	472.440	+/-	16.342
Cd	18.138	+/-	5.755
Ag	551.288	+/-	14.042
Bal	895678.813	+/-	622.908
Nb	12.094	+/-	8.135
Zr	1.000	+/-	29.249
Y	1.000	+/-	6.721
Sr	136.718	+/-	4.579
Rb	13.939	+/-	13.472
Th	1.000	+/-	427.263
Bi	1.000	+/-	332.115
Au	600.426	+/-	27.179
As	2254.837	+/-	75.935
Se	1.000	+/-	8.246
Pb	9238.810	+/-	112.859
Hg	1.000	+/-	6.402
Zn	1.000	+/-	15.039
Cu	17344.064	+/-	214.094
Ni	1.000	+/-	24.600
Co	1.000	+/-	19.419
Fe	386.707	+/-	44.049
Mn	1.000	+/-	47.959
Cr	16.825	+/-	16.192
V	1.000	+/-	12.261
Ti	1.000	+/-	64.819
Ca	43529.754	+/-	474.123
K	2254.636	+/-	153.828
Al	1351.047	+/-	480.844
P	2493.051	+/-	105.946
Si	11170.229	+/-	392.063
Cl	3132.064	+/-	50.134
S	9322.817	+/-	121.515
Mg	1.000	+/-	4824.329

mRFA -Ergebnisse

XL3t-69288

Reading No 12
Mode Mining
Time 2017-11-16 13:12
Duration 120.59
Units ppm
Sigma Value 2
Sequence Final
Flags
INV NR Pl.O.2065a
OBJEKT TAFELGEMAELEN
MATERIAL HOLZ METALL FASSUNG
ANALYSESTELLE P12 PLUVIALE
MESSAUFBAU STATIV
FILTER m30lo30hi30li30
User Login Raquet

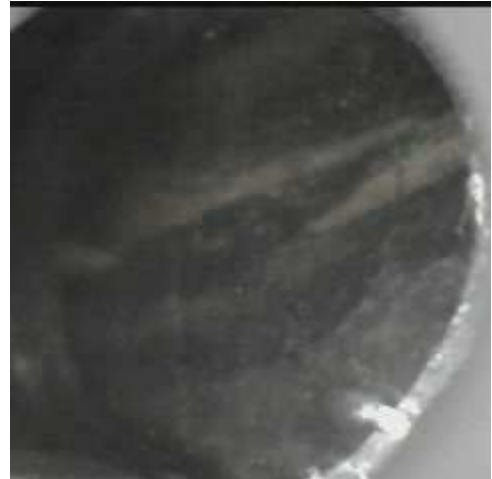


	ppm	+/-	Error
Ce	-339.000	+/-	67.713
La	1.000	+/-	30.960
Ba	1.000	+/-	33.354
Sb	1.000	+/-	13.046
Sn	373.218	+/-	13.126
Cd	20.419	+/-	5.073
Ag	466.830	+/-	11.451
Bal	874101.500	+/-	707.348
Nb	11.728	+/-	6.976
Zr	1.000	+/-	25.091
Y	1.000	+/-	5.616
Sr	145.582	+/-	4.359
Rb	1.000	+/-	15.818
Th	1.000	+/-	369.638
Bi	1.000	+/-	361.317
Au	519.837	+/-	23.857
As	2101.229	+/-	66.598
Se	1.000	+/-	7.181
Pb	7712.901	+/-	93.072
Hg	1.000	+/-	5.476
Zn	52.950	+/-	8.931
Cu	454.792	+/-	22.521
Ni	1.000	+/-	22.187
Co	1.000	+/-	18.778
Fe	358.874	+/-	44.182
Mn	1.000	+/-	50.416
Cr	27.275	+/-	14.941
V	1.000	+/-	10.687
Ti	1.000	+/-	61.829
Ca	72215.430	+/-	725.797
K	1192.710	+/-	144.632
Al	1375.176	+/-	615.742
P	4527.978	+/-	155.346
Si	8699.724	+/-	428.881
Cl	3081.556	+/-	55.990
S	11459.004	+/-	154.055
Mg	11101.284	+/-	7043.054

mRFA -Ergebnisse

XL3t-69288

Reading No 13
Mode Mining
Time 2017-11-16 13:15
Duration 121.95
Units ppm
Sigma Value 2
Sequence Final
Flags
INV NR Pl.O.2065a
OBJEKT TAFELGEMAELEN
MATERIAL HOLZ METALL FASSUNG
ANALYSESTELLE P13 NIMBUS MARRTHA
MESSAUFBAU STATIV
FILTER m30lo30hi30li30
User Login Raquet



	ppm	+/-	Error
Ce	-339.000	+/-	84.673
La	1.000	+/-	38.760
Ba	1.000	+/-	41.438
Sb	1.000	+/-	14.036
Sn	541.229	+/-	17.906
Cd	16.304	+/-	6.052
Ag	535.845	+/-	14.379
Bal	814432.938	+/-	1062.791
Nb	17.330	+/-	10.272
Zr	1.000	+/-	36.536
Y	1.000	+/-	8.648
Sr	148.690	+/-	5.132
Rb	1.000	+/-	21.519
Th	1.000	+/-	536.861
Bi	1.000	+/-	528.754
Au	526.128	+/-	28.632
As	2985.483	+/-	95.937
Se	1.000	+/-	9.379
Pb	13685.739	+/-	173.667
Hg	1.000	+/-	9.067
Zn	54.822	+/-	10.057
Cu	443.092	+/-	24.506
Ni	1.000	+/-	25.763
Co	1.000	+/-	22.989
Fe	771.458	+/-	59.468
Mn	1.000	+/-	55.809
Cr	31.218	+/-	17.500
V	1.000	+/-	21.619
Ti	1.000	+/-	126.937
Ca	114784.461	+/-	1195.324
K	2424.373	+/-	155.766
Al	4019.590	+/-	802.014
P	1745.414	+/-	137.188
Si	24516.764	+/-	682.205
Cl	2818.927	+/-	55.174
S	15500.174	+/-	205.430
Mg	1.000	+/-	7829.679

mRFA -Ergebnisse

XL3t-69288

Reading No 14
Mode Mining
Time 2017-11-16 13:19
Duration 120.66
Units ppm
Sigma Value 2
Sequence Final
Flags
INV NR Pl.O.2065a
OBJEKT TAFELGEMAELEN
MATERIAL HOLZ METALL FASSUNG
ANALYSESTELLE P14 SAUM BETTDECKE
MESSAUFBAU STATIV
FILTER m30lo30hi30li30
User Login Raquet

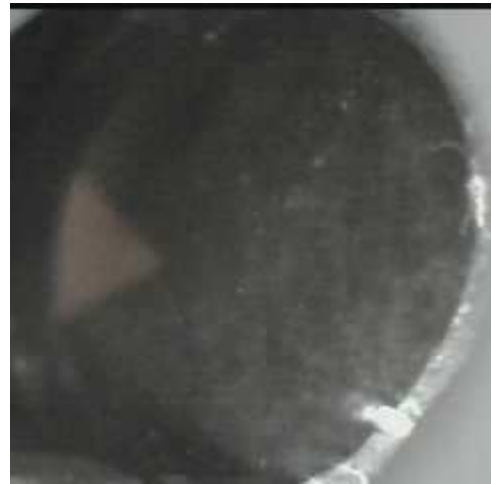


	ppm	+/-	Error
Ce	-339.000	+/-	69.109
La	1.000	+/-	31.543
Ba	1.000	+/-	33.861
Sb	1.000	+/-	11.580
Sn	375.703	+/-	13.396
Cd	17.686	+/-	5.079
Ag	471.189	+/-	11.712
Bal	888694.625	+/-	630.498
Nb	12.271	+/-	7.335
Zr	1.000	+/-	26.336
Y	1.000	+/-	5.932
Sr	148.791	+/-	4.494
Rb	1.000	+/-	18.249
Th	1.000	+/-	387.086
Bi	1.000	+/-	320.905
Au	556.167	+/-	24.815
As	1970.596	+/-	68.356
Se	1.000	+/-	7.446
Pb	8357.464	+/-	99.584
Hg	1.000	+/-	6.095
Zn	70.801	+/-	9.793
Cu	508.821	+/-	23.803
Ni	1.000	+/-	22.884
Co	1.000	+/-	24.135
Fe	1538.121	+/-	70.382
Mn	1.000	+/-	50.252
Cr	24.778	+/-	16.726
V	1.000	+/-	13.804
Ti	82.373	+/-	72.688
Ca	63560.563	+/-	655.995
K	1959.248	+/-	149.430
Al	1909.596	+/-	572.366
P	2389.410	+/-	125.218
Si	13071.561	+/-	478.520
Cl	2356.644	+/-	46.998
S	11923.524	+/-	156.222
Mg	1.000	+/-	5385.459

mRFA -Ergebnisse

XL3t-69288

Reading No 15
Mode Mining
Time 2017-11-16 15:18
Duration 121.78
Units ppm
Sigma Value 2
Sequence Final
Flags
INV NR Pl.O.2065a
OBJEKT TAFELGEMAELEN
MATERIAL HOLZ METALL FASSUNG
ANALYSESTELLE P15 SCHREIN FUELLUN
MESSAUFBAU STATIV
FILTER m30lo30hi30li30
User Login Raquet



	ppm	+/-	Error
Ce	-339.000	+/-	82.473
La	1.000	+/-	38.244
Ba	1.000	+/-	41.403
Sb	1.000	+/-	17.685
Sn	12.000	+/-	7.992
Cd	61.365	+/-	7.611
Ag	9.535	+/-	4.116
Bal	858924.875	+/-	950.376
Nb	10.384	+/-	3.299
Zr	1.000	+/-	12.066
Y	1.000	+/-	1.929
Sr	44.340	+/-	3.122
Rb	1.000	+/-	3.227
Th	1.000	+/-	115.233
Bi	1.000	+/-	101.125
Au	1.000	+/-	5.873
As	139.508	+/-	18.491
Se	24.984	+/-	17.846
Pb	305.303	+/-	15.267
Hg	1.000	+/-	2.376
Zn	76738.680	+/-	577.386
Cu	34.443	+/-	18.141
Ni	1.000	+/-	22.161
Co	1.000	+/-	47.975
Fe	2845.105	+/-	86.291
Mn	1.000	+/-	47.456
Cr	451.516	+/-	25.890
V	1.000	+/-	33.902
Ti	224.939	+/-	176.475
Ca	22169.344	+/-	288.677
K	1061.100	+/-	134.761
Al	8643.013	+/-	658.324
P	541.149	+/-	66.341
Si	19974.119	+/-	442.551
Cl	1952.688	+/-	31.909
S	5831.629	+/-	69.943
Mg	1.000	+/-	4703.589

mRFA -Ergebnisse

XL3t-69288

Reading No 16
Mode Mining
Time 2017-11-16 15:22
Duration 120.91
Units ppm
Sigma Value 2
Sequence Final
Flags
INV NR Pl.O.2065a
OBJEKT TAFELGEMAELEN
MATERIAL HOLZ METALL FASSUNG
ANALYSESTELLE P16 KLEID MARTHA
MESSAUFBAU STATIV
FILTER m30lo30hi30li30
User Login Raquet



	ppm	+/-	Error
Ce	-339.000	+/-	76.452
La	1.000	+/-	34.927
Ba	1.000	+/-	37.412
Sb	17.204	+/-	13.651
Sn	521.772	+/-	16.431
Cd	23.796	+/-	5.715
Ag	503.875	+/-	13.083
Bal	893546.063	+/-	639.518
Nb	14.988	+/-	8.187
Zr	1.000	+/-	33.410
Y	1.000	+/-	6.849
Sr	151.598	+/-	4.822
Rb	1.000	+/-	15.708
Th	1.000	+/-	429.365
Bi	1.000	+/-	470.308
Au	695.311	+/-	29.138
As	2565.417	+/-	79.733
Se	1.000	+/-	9.537
Pb	9640.584	+/-	123.471
Hg	1.000	+/-	6.460
Zn	14.770	+/-	12.876
Cu	8745.495	+/-	135.452
Ni	1.000	+/-	24.503
Co	1.000	+/-	21.567
Fe	744.981	+/-	55.046
Mn	1.000	+/-	51.139
Cr	27.668	+/-	15.189
V	1.000	+/-	11.075
Ti	1.000	+/-	71.687
Ca	43114.578	+/-	514.553
K	1294.041	+/-	151.134
Al	1169.705	+/-	518.456
P	8085.021	+/-	181.064
Si	9156.083	+/-	394.775
Cl	4689.662	+/-	71.607
S	15277.388	+/-	199.595
Mg	1.000	+/-	7427.563

mRFA -Ergebnisse

XL3t-69288

Reading No 17
Mode Mining
Time 2017-11-16 15:27
Duration 121.08
Units ppm
Sigma Value 2
Sequence Final
Flags
INV NR Pl.O.2065a
OBJEKT TAFELGEMAELEN
MATERIAL HOLZ METALL FASSUNG
ANALYSESTELLE P17 ROTLACK DRACHENOPFER
MESSAUFBAU STATIV
FILTER m30lo30hi30li30
User Login Raquet



	ppm	+/-	Error
Ce	-339.000	+/-	121.274
La	1.000	+/-	55.517
Ba	1.000	+/-	59.054
Sb	1.000	+/-	26.228
Sn	23.402	+/-	10.906
Cd	8.963	+/-	7.641
Ag	6.041	+/-	5.068
Bal	880104.625	+/-	1050.154
Nb	54.344	+/-	24.369
Zr	1.000	+/-	80.378
Y	1.000	+/-	20.761
Sr	77.865	+/-	8.954
Rb	1.000	+/-	40.077
Th	1.000	+/-	1115.974
Bi	1.000	+/-	1162.909
Au	1.000	+/-	46.314
As	8572.613	+/-	226.031
Se	26.215	+/-	18.725
Pb	36603.762	+/-	606.933
Hg	2601.277	+/-	58.415
Zn	234.610	+/-	23.931
Cu	1113.125	+/-	46.849
Ni	1.000	+/-	36.322
Co	1.000	+/-	38.158
Fe	484.480	+/-	67.749
Mn	151.045	+/-	76.398
Cr	1.000	+/-	23.092
V	1.000	+/-	21.546
Ti	1.000	+/-	93.713
Ca	28780.086	+/-	533.638
K	7230.573	+/-	264.964
Al	2693.913	+/-	566.700
P	536.766	+/-	98.363
Si	11597.165	+/-	441.123
Cl	2652.159	+/-	61.287
S	16446.947	+/-	306.932
Mg	1.000	+/-	5532.367

mRFA -Ergebnisse

XL3t-69288

Reading No 18
Mode Mining
Time 2017-11-16 15:33
Duration 121.59
Units ppm
Sigma Value 2
Sequence Final
Flags
INV NR Pl.O.2065a
OBJEKT TAFELGEMAELENDE
MATERIAL HOLZ METALL FASSUNG
ANALYSESTELLE P18 HINTERGRUND UNTEN
MESSAUFBAU STATIV
FILTER m30lo30hi30li30
User Login Raquet



	ppm	+/-	Error
Ce	-339.000	+/-	125.734
La	1.000	+/-	57.524
Ba	1.000	+/-	61.393
Sb	1.000	+/-	29.425
Sn	91.852	+/-	13.120
Cd	9.501	+/-	8.001
Ag	1.000	+/-	6.504
Bal	693088.250	+/-	2333.840
Nb	64.250	+/-	25.856
Zr	1.000	+/-	84.426
Y	1.000	+/-	22.155
Sr	113.479	+/-	7.412
Rb	1.000	+/-	43.075
Th	1.000	+/-	1231.735
Bi	1.000	+/-	1084.493
Au	1.000	+/-	28.639
As	6922.997	+/-	222.804
Se	1.000	+/-	15.662
Pb	43568.898	+/-	671.326
Hg	1.000	+/-	16.524
Zn	104.665	+/-	13.067
Cu	119.619	+/-	22.348
Ni	1.000	+/-	38.277
Co	1.000	+/-	37.194
Fe	1745.082	+/-	104.319
Mn	1.000	+/-	105.072
Cr	1.000	+/-	34.347
V	1.000	+/-	28.846
Ti	1.000	+/-	102.439
Ca	207354.234	+/-	2436.721
K	1827.171	+/-	183.996
Al	3656.382	+/-	1178.508
P	1.000	+/-	119.165
Si	15244.315	+/-	631.297
Cl	292.206	+/-	29.682
S	11693.153	+/-	194.531
Mg	14103.974	+/-	11147.109

mRFA -Ergebnisse

XL3t-69288

Reading No 19
Mode Mining
Time 2017-11-16 15:37
Duration 122.43
Units ppm
Sigma Value 2
Sequence Final
Flags
INV NR Pl.O.2065a
OBJEKT TAFELGEMAELEN
MATERIAL HOLZ METALL FASSUNG
ANALYSESTELLE P19 KLEID MARTHA
MESSAUFBAU STATIV
FILTER m30lo30hi30li30
User Login Raquet



	ppm	+/-	Error
Ce	-339.000	+/-	117.511
La	1.000	+/-	53.712
Ba	1.000	+/-	57.297
Sb	40.886	+/-	20.168
Sn	1792.372	+/-	38.588
Cd	20.569	+/-	8.067
Ag	11.209	+/-	5.177
Bal	725749.125	+/-	1975.536
Nb	42.495	+/-	20.053
Zr	1.000	+/-	70.210
Y	1.000	+/-	17.350
Sr	103.606	+/-	6.477
Rb	1.000	+/-	32.747
Th	1.000	+/-	991.791
Bi	1.000	+/-	1046.275
Au	1.000	+/-	23.557
As	2716.791	+/-	162.568
Se	1.000	+/-	16.878
Pb	30028.252	+/-	463.109
Hg	1.000	+/-	14.117
Zn	1.000	+/-	26.825
Cu	22151.828	+/-	385.311
Ni	1.000	+/-	35.571
Co	1.000	+/-	50.990
Fe	6097.366	+/-	177.579
Mn	1.000	+/-	67.986
Cr	1.000	+/-	21.270
V	1.000	+/-	28.537
Ti	239.050	+/-	107.093
Ca	131967.703	+/-	1585.630
K	2764.125	+/-	182.656
Al	9228.922	+/-	1124.695
P	1.000	+/-	115.235
Si	34756.824	+/-	852.779
Cl	1089.406	+/-	36.380
S	14538.800	+/-	223.588
Mg	16660.689	+/-	9241.116

mRFA -Ergebnisse

XL3t-69288

Reading No 20
Mode Mining
Time 2017-11-16 15:42
Duration 122.16
Units ppm
Sigma Value 2
Sequence Final
Flags
INV NR Pl.O.2065a
OBJEKT TAFELGEMAELEN
MATERIAL HOLZ METALL FASSUNG
ANALYSESTELLE P20 KLEID MARTHA
MESSAUFBAU STATIV
FILTER m30lo30hi30li30
User Login Raquet



	ppm	+/-	Error
Ce	-339.000	+/-	113.570
La	1.000	+/-	52.247
Ba	1.000	+/-	55.530
Sb	1.000	+/-	31.579
Sn	1719.084	+/-	37.269
Cd	28.933	+/-	8.139
Ag	11.107	+/-	5.071
Bal	753433.938	+/-	1795.133
Nb	41.377	+/-	20.409
Zr	1.000	+/-	68.939
Y	1.000	+/-	17.438
Sr	114.104	+/-	6.547
Rb	1.000	+/-	33.420
Th	1.000	+/-	994.083
Bi	1.000	+/-	870.082
Au	1.000	+/-	23.417
As	4135.954	+/-	169.426
Se	1.000	+/-	13.459
Pb	31438.953	+/-	476.282
Hg	1.000	+/-	13.366
Zn	42.554	+/-	14.185
Cu	5455.150	+/-	122.044
Ni	1.000	+/-	34.407
Co	1.000	+/-	51.652
Fe	6599.555	+/-	190.504
Mn	1.000	+/-	106.557
Cr	1.000	+/-	21.670
V	1.000	+/-	31.454
Ti	266.832	+/-	108.049
Ca	122301.617	+/-	1522.002
K	2091.635	+/-	167.318
Al	11861.338	+/-	1146.993
P	182.423	+/-	118.034
Si	31778.738	+/-	810.950
Cl	977.342	+/-	35.233
S	14573.994	+/-	226.248
Mg	12945.378	+/-	8481.837

mRFA -Ergebnisse

XL3t-69288

Reading No 21
Mode Mining
Time 2017-11-16 15:45
Duration 120.67
Units ppm
Sigma Value 2
Sequence Final
Flags
INV NR Pl.O.2065a
OBJEKT TAFELGEMAELENDE
MATERIAL HOLZ METALL FASSUNG
ANALYSESTELLE P21 MANTELFUTTER
MESSAUFBAU STATIV
FILTER m30lo30hi30li30
User Login Raquet

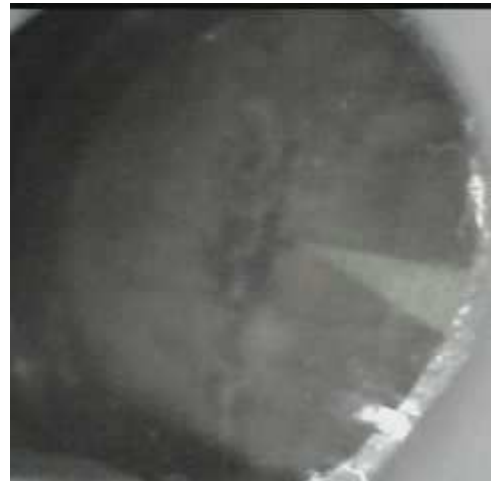


	ppm	+/-	Error
Ce	-339.000	+/-	100.950
La	1.000	+/-	46.175
Ba	1.000	+/-	49.375
Sb	1.000	+/-	22.909
Sn	556.114	+/-	19.591
Cd	16.091	+/-	7.019
Ag	9.835	+/-	4.644
Bal	747514.563	+/-	1517.097
Nb	25.614	+/-	13.327
Zr	1.000	+/-	46.664
Y	1.000	+/-	11.582
Sr	95.450	+/-	4.871
Rb	1.000	+/-	22.561
Th	1.000	+/-	686.381
Bi	1.000	+/-	648.281
Au	1.000	+/-	16.604
As	1902.340	+/-	113.018
Se	1.000	+/-	10.887
Pb	19519.080	+/-	257.755
Hg	1.000	+/-	9.224
Zn	50.082	+/-	12.077
Cu	3753.601	+/-	82.395
Ni	1.000	+/-	28.152
Co	1.000	+/-	47.729
Fe	6307.389	+/-	164.183
Mn	1.000	+/-	64.808
Cr	1.000	+/-	27.838
V	1.000	+/-	28.334
Ti	303.155	+/-	104.637
Ca	163077.672	+/-	1629.935
K	2088.651	+/-	161.243
Al	6273.256	+/-	1117.977
P	1.000	+/-	113.524
Si	24835.344	+/-	760.662
Cl	361.629	+/-	29.848
S	9054.680	+/-	144.911
Mg	14255.453	+/-	9784.545

mRFA -Ergebnisse

XL3t-69288

Reading No 22
Mode Mining
Time 2017-11-16 15:50
Duration 121.49
Units ppm
Sigma Value 2
Sequence Final
Flags
INV NR Pl.O.2065a
OBJEKT TAFELGEMAELENDE
MATERIAL HOLZ METALL FASSUNG
ANALYSESTELLE P22 KLEID
MESSAUFBAU STATIV
FILTER m30lo30hi30li30
User Login Raquet



	ppm	+/-	Error
Ce	-339.000	+/-	119.064
La	1.000	+/-	54.161
Ba	1.000	+/-	58.390
Sb	1.000	+/-	19.305
Sn	1910.943	+/-	40.483
Cd	27.735	+/-	8.495
Ag	1.000	+/-	7.026
Bal	749427.500	+/-	1736.244
Nb	40.139	+/-	19.735
Zr	1.000	+/-	66.808
Y	1.000	+/-	16.863
Sr	93.903	+/-	6.077
Rb	1.000	+/-	33.546
Th	1.000	+/-	969.055
Bi	1.000	+/-	830.058
Au	1.000	+/-	22.441
As	2529.690	+/-	156.275
Se	1.000	+/-	13.320
Pb	30432.180	+/-	452.404
Hg	1.000	+/-	12.851
Zn	42.354	+/-	13.764
Cu	4340.055	+/-	102.784
Ni	1.000	+/-	33.941
Co	1.000	+/-	49.880
Fe	6169.433	+/-	182.153
Mn	1.000	+/-	87.096
Cr	27.053	+/-	21.995
V	1.000	+/-	27.888
Ti	273.287	+/-	113.426
Ca	140135.047	+/-	1685.140
K	3757.204	+/-	197.689
Al	9277.179	+/-	1091.685
P	1.000	+/-	108.000
Si	40192.641	+/-	935.278
Cl	903.601	+/-	35.134
S	10420.064	+/-	170.137
Mg	1.000	+/-	9423.630

mRFA -Ergebnisse

XL3t-69288

Reading No 23
Mode Mining
Time 2017-11-16 15:53
Duration 121.75
Units ppm
Sigma Value 2
Sequence Final
Flags
INV NR Pl.O.2065a
OBJEKT TAFELGEMAELEN
MATERIAL HOLZ METALL FASSUNG
ANALYSESTELLE P23 MANTEL AUSSENSEITE
MESSAUFBAU STATIV
FILTER m30lo30hi30li30
User Login Raquet

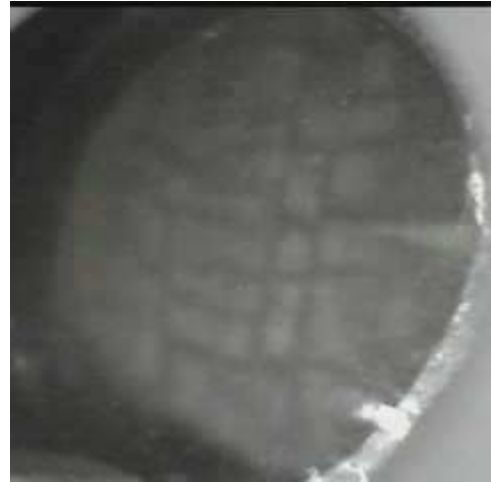


	ppm	+/-	Error
Ce	-339.000	+/-	92.919
La	1.000	+/-	42.504
Ba	1.000	+/-	45.509
Sb	1.000	+/-	19.411
Sn	14.995	+/-	8.575
Cd	9.833	+/-	6.223
Ag	1.000	+/-	4.880
Bal	727093.500	+/-	1640.519
Nb	1.000	+/-	12.147
Zr	1.000	+/-	34.909
Y	1.000	+/-	8.574
Sr	47.070	+/-	7.800
Rb	1.000	+/-	15.915
Th	1.000	+/-	513.461
Bi	1.000	+/-	491.106
Au	1.000	+/-	49.575
As	2368.454	+/-	87.939
Se	10.018	+/-	9.837
Pb	9801.474	+/-	131.552
Hg	7028.350	+/-	92.764
Zn	133.179	+/-	26.655
Cu	574.200	+/-	30.029
Ni	1.000	+/-	29.363
Co	1.000	+/-	39.531
Fe	3631.729	+/-	122.274
Mn	1.000	+/-	70.751
Cr	1.000	+/-	25.719
V	22.140	+/-	20.143
Ti	297.211	+/-	110.829
Ca	171068.578	+/-	1533.328
K	2621.044	+/-	172.609
Al	8911.883	+/-	1228.761
P	1.000	+/-	127.212
Si	35257.719	+/-	873.417
Cl	259.825	+/-	27.767
S	12669.647	+/-	169.785
Mg	18179.158	+/-	10063.197

mRFA -Ergebnisse

XL3t-69288

Reading No 24
Mode Mining
Time 2017-11-16 15:57
Duration 120.28
Units ppm
Sigma Value 2
Sequence Final
Flags
INV NR Pl.O.2065a
OBJEKT TAFELGEMAELEN
MATERIAL HOLZ METALL FASSUNG
ANALYSESTELLE P24 NIMBUS
MESSAUFBAU STATIV
FILTER m30lo30hi30li30
User Login Raquet



	ppm	+/-	Error
Ce	-339.000	+/-	78.816
La	1.000	+/-	36.225
Ba	1.000	+/-	39.005
Sb	1.000	+/-	13.375
Sn	354.662	+/-	15.194
Cd	18.563	+/-	5.850
Ag	623.201	+/-	15.123
Bal	746715.875	+/-	1263.261
Nb	9.459	+/-	6.606
Zr	1.000	+/-	23.787
Y	1.000	+/-	5.418
Sr	145.086	+/-	4.249
Rb	1.000	+/-	16.270
Th	1.000	+/-	353.290
Bi	1.000	+/-	319.464
Au	539.777	+/-	23.216
As	1428.340	+/-	60.250
Se	1.000	+/-	7.028
Pb	7182.148	+/-	81.802
Hg	1.000	+/-	5.219
Zn	45.688	+/-	8.809
Cu	456.174	+/-	22.309
Ni	1.000	+/-	22.477
Co	1.000	+/-	26.707
Fe	2558.759	+/-	85.003
Mn	1.000	+/-	49.977
Cr	1.000	+/-	22.860
V	1.000	+/-	16.670
Ti	141.698	+/-	79.563
Ca	157142.594	+/-	1198.134
K	3987.416	+/-	178.237
Al	6889.389	+/-	1146.364
P	1.000	+/-	122.622
Si	38117.230	+/-	900.357
Cl	529.968	+/-	31.739
S	12469.068	+/-	157.911
Mg	20644.912	+/-	10025.775

mRFA -Ergebnisse

XL3t-69288

Reading No 25
Mode Mining
Time 2017-11-16 16:01
Duration 120.40
Units ppm
Sigma Value 2
Sequence Final
Flags
INV NR Pl.O.2065a
OBJEKT TAFELGEMAELEN
MATERIAL HOLZ METALL FASSUNG
ANALYSESTELLE P25 KREUZSTAB
MESSAUFBAU STATIV
FILTER m30lo30hi30li30
User Login Raquet



	ppm	+/-	Error
Ce	-339.000	+/-	92.267
La	1.000	+/-	42.237
Ba	1.000	+/-	45.135
Sb	1.000	+/-	18.087
Sn	1267.921	+/-	28.823
Cd	28.403	+/-	6.949
Ag	653.361	+/-	17.226
Bal	774262.250	+/-	1411.160
Nb	24.263	+/-	14.334
Zr	1.000	+/-	49.774
Y	1.000	+/-	12.122
Sr	82.499	+/-	4.729
Rb	1.000	+/-	35.495
Th	1.000	+/-	772.807
Bi	1.000	+/-	567.387
Au	397.773	+/-	30.621
As	3808.289	+/-	128.082
Se	1.000	+/-	11.303
Pb	21271.109	+/-	287.749
Hg	1.000	+/-	10.148
Zn	66.134	+/-	10.733
Cu	236.438	+/-	21.443
Ni	1.000	+/-	29.148
Co	1.000	+/-	29.413
Fe	1488.335	+/-	81.849
Mn	1.000	+/-	60.177
Cr	1.000	+/-	21.476
V	1.000	+/-	17.535
Ti	1.000	+/-	130.785
Ca	140170.047	+/-	1524.337
K	1688.702	+/-	157.243
Al	5490.441	+/-	1030.185
P	517.126	+/-	142.979
Si	19611.346	+/-	674.481
Cl	803.345	+/-	35.350
S	18559.398	+/-	256.341
Mg	9572.809	+/-	9319.214

mRFA -Ergebnisse

XL3t-69288

Reading No 26
Mode Mining
Time 2017-11-16 16:05
Duration 120.58
Units ppm
Sigma Value 2
Sequence Final
Flags
INV NR Pl.O.2065a
OBJEKT TAFELGEMAELEN
MATERIAL HOLZ METALL FASSUNG
ANALYSESTELLE P26 NIMBUS HEILIGER
MESSAUFBAU STATIV
FILTER m30lo30hi30li30
User Login Raquet



	ppm	+/-	Error
Ce	-339.000	+/-	76.837
La	1.000	+/-	35.359
Ba	1.000	+/-	38.122
Sb	1.000	+/-	16.080
Sn	457.120	+/-	16.418
Cd	18.358	+/-	5.751
Ag	588.551	+/-	14.727
Bal	778595.250	+/-	1096.805
Nb	10.473	+/-	6.659
Zr	1.000	+/-	23.931
Y	1.000	+/-	5.563
Sr	148.226	+/-	4.380
Rb	13.399	+/-	11.000
Th	1.000	+/-	355.660
Bi	1.000	+/-	325.898
Au	618.580	+/-	24.572
As	837.476	+/-	58.267
Se	1.000	+/-	7.165
Pb	7002.886	+/-	81.063
Hg	1.000	+/-	5.628
Zn	143.463	+/-	12.083
Cu	414.481	+/-	21.968
Ni	1.000	+/-	23.058
Co	1.000	+/-	26.664
Fe	2079.601	+/-	78.808
Mn	1.000	+/-	50.667
Cr	1.000	+/-	28.187
V	1.000	+/-	24.269
Ti	136.226	+/-	122.149
Ca	178025.203	+/-	1326.987
K	1492.034	+/-	152.013
Al	2631.986	+/-	976.758
P	1.000	+/-	124.509
Si	14724.855	+/-	618.577
Cl	1355.524	+/-	43.011
S	10706.247	+/-	146.571
Mg	1.000	+/-	14120.325

mRFA -Ergebnisse

XL3t-69288

Reading No 27
Mode Mining
Time 2017-11-16 16:09
Duration 122.07
Units ppm
Sigma Value 2
Sequence Final
Flags
INV NR Pl.O.2065a
OBJEKT TAFELGEMAELEN
MATERIAL HOLZ METALL FASSUNG
ANALYSESTELLE P27 HEILIGER HUT
MESSAUFBAU STATIV
FILTER m30lo30hi30li30
User Login Raquet



	ppm	+/-	Error
Ce	-339.000	+/-	94.270
La	1.000	+/-	43.110
Ba	1.000	+/-	46.325
Sb	1.000	+/-	19.413
Sn	117.098	+/-	11.119
Cd	16.177	+/-	6.547
Ag	12.149	+/-	4.478
Bal	762231.688	+/-	1365.940
Nb	24.612	+/-	12.463
Zr	1.000	+/-	43.778
Y	1.000	+/-	10.730
Sr	115.858	+/-	4.977
Rb	1.000	+/-	22.070
Th	1.000	+/-	645.082
Bi	1.000	+/-	616.453
Au	1.000	+/-	15.417
As	2674.826	+/-	110.203
Se	1.000	+/-	10.242
Pb	18373.002	+/-	236.201
Hg	1.000	+/-	8.894
Zn	84.026	+/-	10.304
Cu	169.732	+/-	18.910
Ni	1.000	+/-	27.030
Co	1.000	+/-	52.235
Fe	8461.597	+/-	191.476
Mn	1.000	+/-	58.780
Cr	1.000	+/-	29.503
V	1.000	+/-	28.293
Ti	254.486	+/-	108.751
Ca	161493.984	+/-	1577.994
K	2497.152	+/-	167.920
Al	7989.213	+/-	1096.324
P	1.000	+/-	102.377
Si	26851.695	+/-	747.523
Cl	494.881	+/-	29.542
S	8137.734	+/-	128.742
Mg	1.000	+/-	13029.752

mRFA -Ergebnisse

XL3t-69288

Reading No 28
Mode Mining
Time 2017-11-16 16:12
Duration 121.00
Units ppm
Sigma Value 2
Sequence Final
Flags
INV NR Pl.O.2065a
OBJEKT TAFELGEMAELEN
MATERIAL HOLZ METALL FASSUNG
ANALYSESTELLE P28 HEILIGER AGRAFFE
MESSAUFBAU STATIV
FILTER m30lo30hi30li30
User Login Raquet



	ppm	+/-	Error
Ce	-339.000	+/-	113.118
La	1.000	+/-	51.833
Ba	1.000	+/-	55.330
Sb	33.679	+/-	19.646
Sn	84.984	+/-	12.230
Cd	10.618	+/-	7.343
Ag	58.032	+/-	7.029
Bal	745286.188	+/-	1897.971
Nb	43.165	+/-	21.439
Zr	1.000	+/-	72.699
Y	1.000	+/-	18.350
Sr	102.015	+/-	6.633
Rb	1.000	+/-	35.226
Th	1.000	+/-	1050.374
Bi	1.000	+/-	993.516
Au	1.000	+/-	25.998
As	4287.108	+/-	177.934
Se	1.000	+/-	14.375
Pb	32167.416	+/-	505.462
Hg	1.000	+/-	16.186
Zn	73.122	+/-	22.260
Cu	18260.404	+/-	327.781
Ni	1.000	+/-	33.935
Co	1.000	+/-	41.924
Fe	3293.541	+/-	129.072
Mn	1.000	+/-	111.058
Cr	1.000	+/-	21.949
V	1.000	+/-	31.218
Ti	139.005	+/-	114.379
Ca	138501.203	+/-	1681.647
K	3049.291	+/-	189.362
Al	6585.729	+/-	1046.041
P	1.000	+/-	100.220
Si	25445.771	+/-	736.817
Cl	649.862	+/-	31.812
S	8518.448	+/-	147.733
Mg	13410.382	+/-	9041.102

mRFA -Ergebnisse

XL3t-69288

Reading No 29
Mode Mining
Time 2017-11-16 16:16
Duration 120.58
Units ppm
Sigma Value 2
Sequence Final
Flags
INV NR Pl.O.2065a
OBJEKT TAFELGEMAELEN
MATERIAL HOLZ METALL FASSUNG
ANALYSESTELLE P29 HEILIGER AGRAFFE
MESSAUFBAU STATIV
FILTER m30lo30hi30li30
User Login Raquet



	ppm	+/-	Error
Ce	-339.000	+/-	121.046
La	1.000	+/-	55.322
Ba	1.000	+/-	59.318
Sb	1.000	+/-	22.313
Sn	42.482	+/-	11.652
Cd	1.000	+/-	10.757
Ag	26.171	+/-	6.063
Bal	684469.313	+/-	2321.680
Nb	23.266	+/-	21.478
Zr	1.000	+/-	74.365
Y	1.000	+/-	18.962
Sr	84.577	+/-	6.657
Rb	1.000	+/-	41.642
Th	1.000	+/-	1082.778
Bi	1.000	+/-	896.882
Au	1.000	+/-	25.138
As	442.089	+/-	166.516
Se	1.000	+/-	16.133
Pb	29800.420	+/-	464.288
Hg	52.192	+/-	16.116
Zn	1.000	+/-	43.898
Cu	49575.836	+/-	753.714
Ni	1.000	+/-	34.933
Co	1.000	+/-	43.333
Fe	3607.750	+/-	131.780
Mn	1.000	+/-	66.094
Cr	1.000	+/-	21.001
V	1.000	+/-	32.100
Ti	213.872	+/-	118.029
Ca	177012.953	+/-	1844.325
K	3082.174	+/-	192.232
Al	10037.279	+/-	1421.958
P	1.000	+/-	115.172
Si	31351.264	+/-	875.768
Cl	642.621	+/-	34.575
S	9535.838	+/-	157.073
Mg	1.000	+/-	10873.396

mRFA -Ergebnisse

XL3t-69288

Reading No 30
Mode Mining
Time 2017-11-16 16:21
Duration 122.01
Units ppm
Sigma Value 2
Sequence Final
Flags
INV NR Pl.O.2065a
OBJEKT TAFELGEMAELENDE
MATERIAL HOLZ METALL FASSUNG
ANALYSESTELLE P30 HEILIGER MANTEL
MESSAUFBAU STATIV
FILTER m30lo30hi30li30
User Login Raquet



	ppm	+/-	Error
Ce	25.935	+/-	223.318
La	1.000	+/-	157.867
Ba	109.225	+/-	106.806
Sb	1.000	+/-	54.336
Sn	7459.569	+/-	182.105
Cd	19.308	+/-	15.218
Ag	24.259	+/-	9.867
Bal	570926.188	+/-	5078.673
Nb	135.659	+/-	61.683
Zr	1.000	+/-	184.237
Y	1.000	+/-	50.392
Sr	51.414	+/-	12.698
Rb	1.000	+/-	104.566
Th	1.000	+/-	3376.413
Bi	1.000	+/-	2027.282
Au	1.000	+/-	58.278
As	6617.543	+/-	401.872
Se	1.000	+/-	22.357
Pb	96264.484	+/-	2107.666
Hg	1.000	+/-	33.013
Zn	111.795	+/-	21.759
Cu	837.215	+/-	58.038
Ni	1.000	+/-	61.009
Co	1.000	+/-	91.973
Fe	6862.354	+/-	283.881
Mn	1.000	+/-	178.713
Cr	1.000	+/-	52.131
V	1.000	+/-	41.738
Ti	185.446	+/-	171.744
Ca	237689.109	+/-	3972.549
K	2869.135	+/-	250.062
Al	10624.637	+/-	1801.897
P	1.000	+/-	133.281
Si	27996.154	+/-	975.458
Cl	843.812	+/-	46.170
S	12197.789	+/-	275.313
Mg	17808.943	+/-	14909.932

mRFA -Ergebnisse

XL3t-69288

Reading No 31
Mode Mining
Time 2017-11-16 16:26
Duration 121.22
Units ppm
Sigma Value 2
Sequence Final
Flags
INV NR Pl.O.2065a
OBJEKT TAFELGEMAELENDE
MATERIAL HOLZ METALL FASSUNG
ANALYSESTELLE P31 HEILIGER GEWAND
MESSAUFBAU STATIV
FILTER m30lo30hi30li30
User Login Raquet

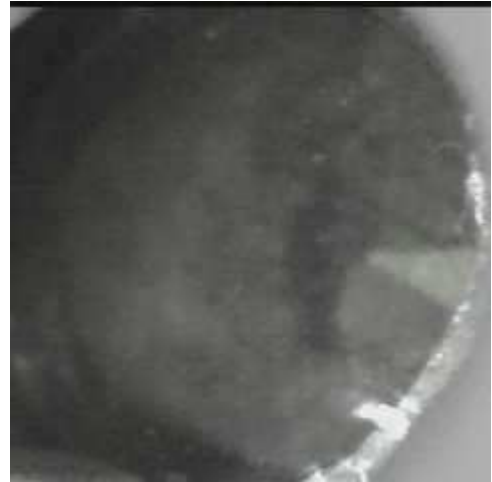


	ppm	+/-	Error
Ce	-339.000	+/-	103.854
La	1.000	+/-	47.758
Ba	1.000	+/-	50.927
Sb	1.000	+/-	17.080
Sn	351.808	+/-	16.326
Cd	10.463	+/-	6.893
Ag	1.000	+/-	6.414
Bal	735550.750	+/-	1764.854
Nb	32.899	+/-	18.063
Zr	1.000	+/-	61.559
Y	1.000	+/-	15.411
Sr	145.982	+/-	6.646
Rb	1.000	+/-	32.280
Th	1.000	+/-	897.739
Bi	1.000	+/-	780.612
Au	1.000	+/-	22.383
As	4555.496	+/-	156.968
Se	1.000	+/-	12.436
Pb	28132.234	+/-	402.431
Hg	1.000	+/-	14.059
Zn	91.929	+/-	11.905
Cu	166.003	+/-	21.072
Ni	1.000	+/-	32.053
Co	1.000	+/-	51.052
Fe	6680.015	+/-	184.777
Mn	1.000	+/-	66.255
Cr	1.000	+/-	30.105
V	21.297	+/-	19.944
Ti	219.870	+/-	110.442
Ca	150961.609	+/-	1719.208
K	2715.855	+/-	182.473
Al	10539.060	+/-	1267.879
P	1.000	+/-	124.659
Si	32597.871	+/-	875.392
Cl	642.946	+/-	33.480
S	12318.335	+/-	192.955
Mg	14265.595	+/-	9713.416

mRFA -Ergebnisse

XL3t-69288

Reading No 32
Mode Mining
Time 2017-11-16 16:30
Duration 121.19
Units ppm
Sigma Value 2
Sequence Final
Flags
INV NR Pl.O.2065a
OBJEKT TAFELGEMAELENDE
MATERIAL HOLZ METALL FASSUNG
ANALYSESTELLE P32 HEILIGER STAB
MESSAUFBAU STATIV
FILTER m30lo30hi30li30
User Login Raquet



	ppm	+/-	Error
Ce	-339.000	+/-	85.579
La	1.000	+/-	39.127
Ba	1.000	+/-	42.185
Sb	1.000	+/-	21.464
Sn	397.702	+/-	15.862
Cd	18.227	+/-	6.168
Ag	433.549	+/-	12.946
Bal	770080.750	+/-	1228.611
Nb	1.000	+/-	9.154
Zr	1.000	+/-	26.999
Y	1.000	+/-	6.280
Sr	126.820	+/-	4.415
Rb	1.000	+/-	15.231
Th	1.000	+/-	398.814
Bi	1.000	+/-	311.489
Au	1.000	+/-	10.678
As	1342.779	+/-	66.929
Se	1.000	+/-	7.532
Pb	7481.601	+/-	91.412
Hg	1.000	+/-	6.015
Zn	186.168	+/-	21.044
Cu	23769.869	+/-	265.789
Ni	1.000	+/-	24.177
Co	1.000	+/-	28.679
Fe	2475.278	+/-	84.979
Mn	1.000	+/-	69.461
Cr	1.000	+/-	16.793
V	1.000	+/-	17.932
Ti	151.626	+/-	85.960
Ca	147721.422	+/-	1111.534
K	2637.938	+/-	162.232
Al	4956.778	+/-	948.074
P	1.000	+/-	109.527
Si	25320.135	+/-	687.000
Cl	852.523	+/-	32.396
S	12046.950	+/-	144.628
Mg	1.000	+/-	8257.845

mRFA -Ergebnisse

XL3t-69288

Reading No 33
Mode Mining
Time 2017-11-16 16:34
Duration 120.08
Units ppm
Sigma Value 2
Sequence Final
Flags
INV NR Pl.O.2065a
OBJEKT TAFELGEMAELEN
MATERIAL HOLZ METALL FASSUNG
ANALYSESTELLE P33 HEILIGER STAB
MESSAUFBAU STATIV
FILTER m30lo30hi30li30
User Login Raquet

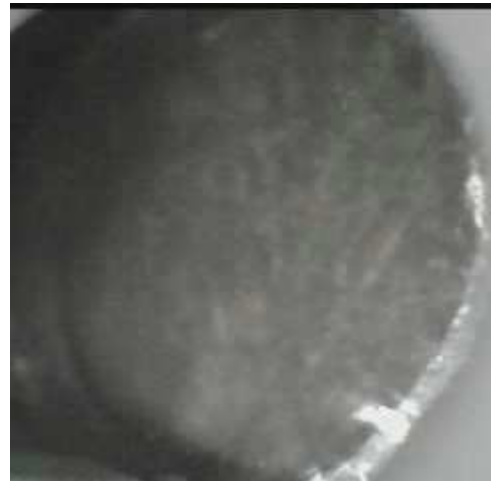


	ppm	+/-	Error
Ce	-339.000	+/-	78.198
La	1.000	+/-	35.915
Ba	1.000	+/-	38.784
Sb	1.000	+/-	16.434
Sn	305.346	+/-	13.635
Cd	17.154	+/-	5.678
Ag	428.063	+/-	12.110
Bal	761838.250	+/-	1231.710
Nb	1.000	+/-	9.017
Zr	1.000	+/-	22.288
Y	1.000	+/-	5.052
Sr	157.512	+/-	4.531
Rb	1.000	+/-	12.700
Th	1.000	+/-	330.490
Bi	1.000	+/-	275.361
Au	1.000	+/-	8.720
As	1157.080	+/-	56.237
Se	1.000	+/-	6.380
Pb	5781.477	+/-	69.585
Hg	1.000	+/-	4.873
Zn	93.340	+/-	15.868
Cu	14521.886	+/-	168.386
Ni	1.000	+/-	22.558
Co	1.000	+/-	26.028
Fe	1943.875	+/-	74.673
Mn	1.000	+/-	63.590
Cr	1.000	+/-	16.723
V	1.000	+/-	21.910
Ti	223.094	+/-	85.901
Ca	147615.578	+/-	1060.883
K	2036.235	+/-	149.228
Al	6216.903	+/-	1053.147
P	1.000	+/-	119.312
Si	26994.734	+/-	737.249
Cl	1223.054	+/-	37.924
S	12193.598	+/-	147.678
Mg	17252.816	+/-	9499.508

mRFA -Ergebnisse

XL3t-69288

Reading No 34
Mode Mining
Time 2017-11-16 16:39
Duration 121.05
Units ppm
Sigma Value 2
Sequence Final
Flags
INV NR Pl.O.2065a
OBJEKT TAFELGEMAELEN
MATERIAL HOLZ METALL FASSUNG
ANALYSESTELLE P34 UEBERMALUNG
MESSAUFBAU STATIV
FILTER m30lo30hi30li30
User Login Raquet



	ppm	+/-	Error
Ce	-339.000	+/-	56.185
La	1.000	+/-	25.730
Ba	1.000	+/-	27.983
Sb	1.000	+/-	14.258
Sn	10.880	+/-	5.496
Cd	27.541	+/-	4.529
Ag	5.596	+/-	2.722
Bal	844330.000	+/-	717.203
Nb	5.319	+/-	1.904
Zr	1.000	+/-	5.470
Y	3.744	+/-	1.412
Sr	54.227	+/-	2.222
Rb	2.336	+/-	1.885
Th	1.000	+/-	63.275
Bi	1.000	+/-	43.060
Au	1.000	+/-	2.925
As	44.092	+/-	6.685
Se	1.000	+/-	1.208
Pb	67.139	+/-	5.172
Hg	1.000	+/-	1.000
Zn	12574.687	+/-	100.976
Cu	1.000	+/-	9.343
Ni	1.000	+/-	16.808
Co	1.000	+/-	23.749
Fe	2165.957	+/-	66.533
Mn	64.184	+/-	46.794
Cr	811.383	+/-	22.852
V	1.000	+/-	19.924
Ti	79.043	+/-	78.783
Ca	110411.313	+/-	620.245
K	1102.995	+/-	116.320
Al	2276.333	+/-	661.229
P	1.000	+/-	128.060
Si	8028.722	+/-	394.178
Cl	3908.006	+/-	53.069
S	6345.658	+/-	86.201
Mg	7680.789	+/-	6659.437

mRFA -Ergebnisse

XL3t-69288

Reading No 35
Mode Mining
Time 2017-11-16 16:44
Duration 121.87
Units ppm
Sigma Value 2
Sequence Final
Flags
INV NR Pl.O.2065a
OBJEKT TAFELGEMAELEN
MATERIAL HOLZ METALL FASSUNG
ANALYSESTELLE P35 ROTE RAHMUNG
MESSAUFBAU STATIV
FILTER m30lo30hi30li30
User Login Raquet



	ppm	+/-	Error
Ce	-339.000	+/-	130.099
La	1.000	+/-	59.774
Ba	1.000	+/-	63.287
Sb	1.000	+/-	33.977
Sn	1.000	+/-	15.777
Cd	1.000	+/-	11.965
Ag	1.000	+/-	4.452
Bal	828231.688	+/-	1381.954
Nb	1.000	+/-	40.098
Zr	1.000	+/-	83.688
Y	1.000	+/-	21.021
Sr	22.324	+/-	9.468
Rb	1.000	+/-	51.941
Th	1.000	+/-	1490.612
Bi	1.000	+/-	897.171
Au	1.000	+/-	54.370
As	8837.122	+/-	238.264
Se	1.000	+/-	22.970
Pb	37066.891	+/-	662.916
Hg	4446.927	+/-	89.500
Zn	484.517	+/-	31.801
Cu	220.775	+/-	24.460
Ni	52.267	+/-	38.234
Co	58.719	+/-	30.221
Fe	143.467	+/-	56.662
Mn	130.174	+/-	79.822
Cr	1.000	+/-	20.400
V	1.000	+/-	23.247
Ti	1.000	+/-	85.754
Ca	13908.728	+/-	314.439
K	434.717	+/-	104.413
Al	2438.506	+/-	717.434
P	25805.910	+/-	548.961
Si	14774.714	+/-	591.160
Cl	3662.251	+/-	87.887
S	59280.371	+/-	1134.149
Mg	1.000	+/-	7834.582

mRFA -Ergebnisse

XL3t-69288

Reading No 36
Mode Mining
Time 2017-11-16 16:48
Duration 122.19
Units ppm
Sigma Value 2
Sequence Final
Flags
INV NR Pl.O.2065a
OBJEKT TAFELGEMAELDE
MATERIAL HOLZ METALL FASSUNG
ANALYSESTELLE P36 ROTE RAHMUNG UEBERMALT
MESSAUFBAU STATIV
FILTER m30lo30hi30li30
User Login Raquet



	ppm	+/-	Error
Ce	-339.000	+/-	185.397
La	1.000	+/-	114.800
Ba	1.000	+/-	131.734
Sb	1.000	+/-	28.901
Sn	20.434	+/-	15.717
Cd	1.000	+/-	9.838
Ag	1.000	+/-	10.278
Bal	656691.500	+/-	3196.676
Nb	1.000	+/-	46.878
Zr	1.000	+/-	111.045
Y	1.000	+/-	29.454
Sr	22.668	+/-	15.458
Rb	1.000	+/-	68.546
Th	1.000	+/-	2021.180
Bi	1.000	+/-	1260.263
Au	1.000	+/-	90.958
As	9535.967	+/-	307.135
Se	1.000	+/-	23.985
Pb	46901.633	+/-	923.072
Hg	9762.197	+/-	200.513
Zn	525.404	+/-	47.403
Cu	255.142	+/-	33.276
Ni	1.000	+/-	55.819
Co	1.000	+/-	52.073
Fe	2742.008	+/-	153.927
Mn	196.152	+/-	102.909
Cr	1.000	+/-	42.490
V	1.000	+/-	37.542
Ti	1.000	+/-	191.705
Ca	216889.250	+/-	3147.169
K	2840.136	+/-	224.704
Al	9239.134	+/-	1525.184
P	1.000	+/-	146.690
Si	26771.465	+/-	889.353
Cl	996.190	+/-	44.636
S	16610.719	+/-	307.792
Mg	1.000	+/-	13857.016