

mRFA -Ergebnisse

XL3t-69288

Reading No 1  
Mode Mining  
Time 2018-09-14 10:41  
Duration 121.31  
Units ppm  
Sigma Value 2  
Sequence Final  
Flags 3mm  
INV NR Gm4  
OBJEKT TAFELGEMAELENDE  
MATERIAL HOLZ METALL FASSUNG  
ANALYSESTELLE P1 KLEID AERMEL  
MESSAUFBAU STATIV  
FILTER m30lo30hi30li30  
User Login Raquet



	ppm	+/-	Error
Ce	1.000	+/-	200.016
La	1.000	+/-	163.767
Ba	1.000	+/-	170.517
Sb	1.000	+/-	57.452
Sn	104.817	+/-	43.477
Cd	1.000	+/-	31.425
Ag	19.619	+/-	15.824
Bal	824697.563	+/-	2424.876
Nb	49.176	+/-	40.837
Zr	1.000	+/-	137.403
Y	1.000	+/-	35.783
Sr	159.800	+/-	16.659
Rb	1.000	+/-	67.709
Th	1.000	+/-	1836.693
Bi	1.000	+/-	1647.455
Au	1.000	+/-	77.009
As	5873.442	+/-	310.767
Se	1.000	+/-	37.856
Pb	43497.258	+/-	1069.300
Hg	2397.942	+/-	90.576
Zn	1.000	+/-	58.041
Cu	73703.734	+/-	1461.883
Ni	1.000	+/-	74.799
Co	1.000	+/-	74.505
Fe	5629.383	+/-	229.606
Mn	294.663	+/-	109.405
Cr	1.000	+/-	41.477
V	1.000	+/-	36.364
Ti	740.637	+/-	187.246
Ca	7271.769	+/-	258.240
K	5768.864	+/-	328.300
Al	1992.358	+/-	813.702
P	2113.296	+/-	159.388
Si	6598.436	+/-	488.207
Cl	3441.184	+/-	107.143
S	15646.086	+/-	350.762
Mg	1.000	+/-	8598.474

mRFA -Ergebnisse

XL3t-69288

Reading No 2  
Mode Mining  
Time 2018-09-14 10:46  
Duration 121.87  
Units ppm  
Sigma Value 2  
Sequence Final  
Flags 3mm  
INV NR Gm4  
OBJEKT TAFELGEMAELENDE  
MATERIAL HOLZ METALL FASSUNG  
ANALYSESTELLE P2 ERBSENBLUETE 1  
MESSAUFBAU STATIV  
FILTER m30lo30hi30li30  
User Login Raquet



	ppm	+/-	Error
Ce	1.000	+/-	231.415
La	1.000	+/-	222.216
Ba	1.000	+/-	258.309
Sb	1.000	+/-	80.672
Sn	290.063	+/-	60.816
Cd	1.000	+/-	35.927
Ag	1.000	+/-	24.079
Bal	836812.125	+/-	2842.228
Nb	1.000	+/-	53.884
Zr	1.000	+/-	176.262
Y	71.534	+/-	50.299
Sr	213.285	+/-	23.458
Rb	1.000	+/-	137.180
Th	1.000	+/-	2751.236
Bi	1.000	+/-	1864.266
Au	1.000	+/-	134.429
As	45180.969	+/-	1155.648
Se	94.427	+/-	67.448
Pb	57943.539	+/-	1628.403
Hg	3080.715	+/-	131.756
Zn	524.718	+/-	47.340
Cu	779.770	+/-	60.240
Ni	159.081	+/-	57.528
Co	1.000	+/-	74.583
Fe	2462.164	+/-	187.083
Mn	314.460	+/-	124.798
Cr	1.000	+/-	49.301
V	1.000	+/-	40.996
Ti	1.000	+/-	293.395
Ca	8939.636	+/-	346.131
K	8040.494	+/-	446.643
Al	2020.098	+/-	904.606
P	1008.829	+/-	159.253
Si	10752.090	+/-	676.713
Cl	3574.394	+/-	132.266
S	17737.518	+/-	489.514
Mg	1.000	+/-	10302.412

mRFA -Ergebnisse

XL3t-69288

Reading No 3  
Mode Mining  
Time 2018-09-14 10:56  
Duration 120.05  
Units ppm  
Sigma Value 2  
Sequence Final  
Flags  
INV NR Gm4  
OBJEKT TAFELGEMAELEN  
MATERIAL HOLZ METALL FASSUNG  
ANALYSESTELLE P2 ERBSENBLUETE 1  
MESSAUFBAU STATIV  
FILTER m30lo30hi30li30  
User Login Raquet



	ppm	+/-	Error
Ce	-339.000	+/-	255.568
La	1.000	+/-	89.613
Ba	1.000	+/-	105.560
Sb	34.190	+/-	32.354
Sn	171.664	+/-	21.885
Cd	1.000	+/-	19.215
Ag	15.910	+/-	8.428
Bal	831729.000	+/-	2270.857
Nb	1.000	+/-	49.555
Zr	1.000	+/-	158.335
Y	1.000	+/-	42.972
Sr	152.921	+/-	16.564
Rb	1.000	+/-	142.160
Th	1.000	+/-	3385.719
Bi	1.000	+/-	1602.481
Au	1.000	+/-	89.966
As	37994.020	+/-	926.411
Se	49.660	+/-	35.471
Pb	69467.250	+/-	1709.176
Hg	2485.650	+/-	88.019
Zn	432.580	+/-	33.136
Cu	637.426	+/-	43.396
Ni	168.180	+/-	49.483
Co	1.000	+/-	75.790
Fe	1882.453	+/-	126.360
Mn	173.334	+/-	91.505
Cr	1.000	+/-	47.661
V	1.000	+/-	33.658
Ti	1.000	+/-	161.319
Ca	8095.287	+/-	274.137
K	7311.283	+/-	354.119
Al	2747.083	+/-	694.132
P	1400.231	+/-	123.811
Si	11569.722	+/-	513.115
Cl	2383.362	+/-	77.496
S	21098.826	+/-	569.957
Mg	1.000	+/-	6337.831

mRFA -Ergebnisse

XL3t-69288

Reading No 4  
Mode Mining  
Time 2018-09-14 11:02  
Duration 120.14  
Units ppm  
Sigma Value 2  
Sequence Final  
Flags 3mm  
INV NR Gm4  
OBJEKT TAFELGEMAELEN  
MATERIAL HOLZ METALL FASSUNG  
ANALYSESTELLE P3 MANTEL  
MESSAUFBAU STATIV  
FILTER m30lo30hi30li30  
User Login Raquet



	ppm	+/-	Error
Ce	1.000	+/-	142.354
La	1.000	+/-	115.167
Ba	1.000	+/-	120.853
Sb	1.000	+/-	50.602
Sn	1.000	+/-	37.649
Cd	37.283	+/-	18.741
Ag	1.000	+/-	14.398
Bal	877924.813	+/-	1464.129
Nb	1.000	+/-	19.989
Zr	1.000	+/-	62.591
Y	1.000	+/-	15.760
Sr	226.358	+/-	17.596
Rb	1.000	+/-	35.580
Th	1.000	+/-	877.280
Bi	1.000	+/-	718.919
Au	1.000	+/-	89.616
As	3345.258	+/-	155.833
Se	1.000	+/-	22.679
Pb	11120.452	+/-	258.981
Hg	7124.327	+/-	165.727
Zn	847.329	+/-	65.293
Cu	548.496	+/-	50.834
Ni	1.000	+/-	45.687
Co	1.000	+/-	60.506
Fe	1757.493	+/-	159.767
Mn	1.000	+/-	185.281
Cr	1.000	+/-	46.011
V	1.000	+/-	42.499
Ti	1.000	+/-	195.610
Ca	41439.305	+/-	911.270
K	6095.693	+/-	367.783
Al	5185.001	+/-	1074.013
P	6979.784	+/-	300.409
Si	8526.989	+/-	674.416
Cl	3586.339	+/-	119.885
S	25255.123	+/-	534.313
Mg	1.000	+/-	9783.332

mRFA -Ergebnisse

XL3t-69288

Reading No 5  
Mode Mining  
Time 2018-09-14 11:08  
Duration 121.40  
Units ppm  
Sigma Value 2  
Sequence Final  
Flags 3mm  
INV NR Gm4  
OBJEKT TAFELGEMAELENDE  
MATERIAL HOLZ METALL FASSUNG  
ANALYSESTELLE P4 SAUMZIERDE  
MESSAUFBAU STATIV  
FILTER m30lo30hi30li30  
User Login Raquet



	ppm	+/-	Error
Ce	1.000	+/-	198.022
La	1.000	+/-	145.005
Ba	1.000	+/-	217.688
Sb	1.000	+/-	72.478
Sn	1025.573	+/-	72.340
Cd	1.000	+/-	18.818
Ag	1.000	+/-	18.952
Bal	851281.188	+/-	1753.608
Nb	1.000	+/-	43.349
Zr	1.000	+/-	98.557
Y	1.000	+/-	24.202
Sr	101.278	+/-	9.621
Rb	1.000	+/-	46.565
Th	1.000	+/-	1341.273
Bi	1.000	+/-	1287.289
Au	112.504	+/-	52.469
As	4448.121	+/-	229.601
Se	1.000	+/-	29.310
Pb	26813.641	+/-	606.015
Hg	1.000	+/-	24.470
Zn	1.000	+/-	50.403
Cu	78472.242	+/-	1395.609
Ni	1.000	+/-	44.138
Co	1.000	+/-	51.978
Fe	2270.060	+/-	134.618
Mn	181.410	+/-	95.840
Cr	1.000	+/-	28.585
V	1.000	+/-	33.225
Ti	378.145	+/-	162.974
Ca	4650.680	+/-	192.056
K	1913.880	+/-	190.843
Al	1232.464	+/-	630.490
P	1417.076	+/-	130.914
Si	7373.606	+/-	453.998
Cl	2378.575	+/-	75.201
S	15949.501	+/-	323.749
Mg	1.000	+/-	6714.350

mRFA -Ergebnisse

XL3t-69288

Reading No 6  
Mode Mining  
Time 2018-09-14 11:13  
Duration 120.82  
Units ppm  
Sigma Value 2  
Sequence Final  
Flags 3mm  
INV NR Gm4  
OBJEKT TAFELGEMAELEN  
MATERIAL HOLZ METALL FASSUNG  
ANALYSESTELLE P5 SAUMZIERDE 2  
MESSAUFBAU STATIV  
FILTER m30lo30hi30li30  
User Login Raquet



	ppm	+/-	Error
Ce	1.000	+/-	142.080
La	1.000	+/-	116.978
Ba	1.000	+/-	146.245
Sb	1.000	+/-	41.111
Sn	403.084	+/-	43.577
Cd	1.000	+/-	21.379
Ag	1.000	+/-	8.994
Bal	857883.688	+/-	1543.323
Nb	1.000	+/-	24.070
Zr	1.000	+/-	71.517
Y	1.000	+/-	17.241
Sr	99.380	+/-	8.364
Rb	1.000	+/-	32.687
Th	1.000	+/-	985.741
Bi	1.000	+/-	908.819
Au	480.502	+/-	53.904
As	2392.713	+/-	161.272
Se	1.000	+/-	17.999
Pb	15947.805	+/-	337.611
Hg	1.000	+/-	20.306
Zn	1.000	+/-	48.256
Cu	80516.547	+/-	1272.739
Ni	1.000	+/-	39.292
Co	1.000	+/-	54.047
Fe	3459.406	+/-	152.712
Mn	149.799	+/-	89.604
Cr	1.000	+/-	26.669
V	1.000	+/-	38.322
Ti	623.082	+/-	172.269
Ca	7126.200	+/-	204.590
K	2807.931	+/-	194.131
Al	1426.104	+/-	569.382
P	844.673	+/-	99.284
Si	6540.381	+/-	398.219
Cl	2322.333	+/-	66.933
S	9708.237	+/-	185.306
Mg	7268.125	+/-	7026.607

mRFA -Ergebnisse

XL3t-69288

Reading No 7  
Mode Mining  
Time 2018-09-14 11:18  
Duration 121.73  
Units ppm  
Sigma Value 2  
Sequence Final  
Flags 3mm  
INV NR Gm4  
OBJEKT TAFELGEMAELEN  
MATERIAL HOLZ METALL FASSUNG  
ANALYSESTELLE P6 ERBSENBLUETE 2  
MESSAUFBAU STATIV  
FILTER m30lo30hi30li30  
User Login Raquet



	ppm	+/-	Error
Ce	1.000	+/-	251.035
La	1.000	+/-	177.156
Ba	1.000	+/-	184.409
Sb	1.000	+/-	79.953
Sn	2395.515	+/-	139.856
Cd	1.000	+/-	27.601
Ag	21.251	+/-	17.329
Bal	844336.750	+/-	2487.461
Nb	1.000	+/-	37.581
Zr	1.000	+/-	132.280
Y	237.498	+/-	37.950
Sr	236.169	+/-	18.947
Rb	126.061	+/-	74.342
Th	1.000	+/-	2770.994
Bi	1.000	+/-	1422.942
Au	1.000	+/-	127.518
As	61126.617	+/-	1592.930
Se	83.642	+/-	59.744
Pb	34343.719	+/-	1055.271
Hg	333.916	+/-	96.933
Zn	434.306	+/-	36.662
Cu	946.181	+/-	62.881
Ni	86.723	+/-	50.172
Co	1.000	+/-	74.435
Fe	2903.771	+/-	192.075
Mn	132.516	+/-	107.381
Cr	1.000	+/-	58.206
V	47.968	+/-	41.044
Ti	351.149	+/-	201.183
Ca	7602.049	+/-	327.217
K	9798.264	+/-	507.997
Al	2576.173	+/-	954.634
P	672.894	+/-	158.974
Si	8746.172	+/-	624.437
Cl	2744.265	+/-	113.509
S	19716.416	+/-	575.950
Mg	1.000	+/-	15066.708

## mRFA -Ergebnisse

XL3t-69288

Reading No 8  
Mode Mining  
Time 2018-09-14 11:25  
Duration 121.36  
Units ppm  
Sigma Value 2  
Sequence Final  
Flags 3mm  
INV NR Gm4  
OBJEKT TAFELGEMAELEN  
MATERIAL HOLZ METALL FASSUNG  
ANALYSESTELLE P7 MANTELSAUM  
MESSAUFBAU STATIV  
FILTER m30lo30hi30li30  
User Login Raquet



	ppm	+/-	Error
Ce	1.000	+/-	164.230
La	1.000	+/-	133.043
Ba	1.000	+/-	139.075
Sb	1.000	+/-	70.026
Sn	295.202	+/-	43.328
Cd	1.000	+/-	21.493
Ag	1.000	+/-	10.064
Bal	891613.938	+/-	1245.022
Nb	1.000	+/-	18.107
Zr	1.000	+/-	66.929
Y	1.000	+/-	16.873
Sr	94.786	+/-	13.750
Rb	1.000	+/-	49.018
Th	1.000	+/-	1033.968
Bi	1.000	+/-	755.887
Au	866.854	+/-	108.480
As	18835.012	+/-	400.491
Se	27.465	+/-	19.618
Pb	14551.679	+/-	319.940
Hg	5390.199	+/-	125.488
Zn	662.159	+/-	50.061
Cu	1109.065	+/-	60.808
Ni	1.000	+/-	43.070
Co	1.000	+/-	48.928
Fe	1845.612	+/-	140.982
Mn	216.383	+/-	109.302
Cr	1.000	+/-	45.813
V	1.000	+/-	40.967
Ti	170.043	+/-	148.378
Ca	21140.838	+/-	497.812
K	7913.373	+/-	362.751
Al	4586.851	+/-	815.925
P	1099.975	+/-	140.731
Si	10612.824	+/-	583.188
Cl	2757.688	+/-	87.883
S	16210.039	+/-	340.600
Mg	1.000	+/-	10474.179



mRFA -Ergebnisse

XL3t-69288

Reading No 9  
Mode Mining  
Time 2018-09-14 12:04  
Duration 121.65  
Units ppm  
Sigma Value 2  
Sequence Final  
Flags 3mm  
INV NR Gm4  
OBJEKT TAFELGEMAELEN  
MATERIAL HOLZ METALL FASSUNG  
ANALYSESTELLE P8 ERBSENBLUETE 3  
MESSAUFBAU STATIV  
FILTER m30lo30hi30li30  
User Login Raquet

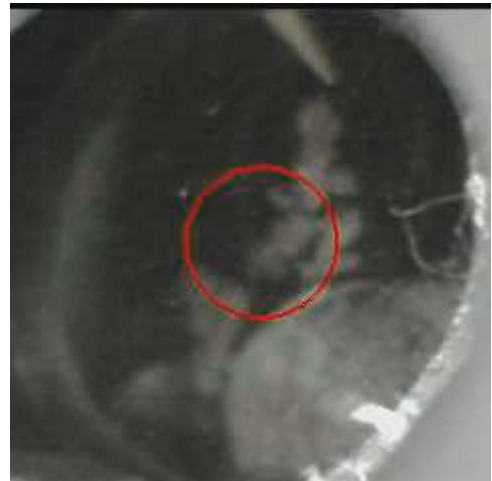


	ppm	+/-	Error
Ce	1.000	+/-	129.421
La	1.000	+/-	107.364
Ba	1.000	+/-	111.928
Sb	1.000	+/-	58.729
Sn	100.391	+/-	29.545
Cd	1.000	+/-	22.587
Ag	1.000	+/-	8.583
Bal	881854.500	+/-	1196.106
Nb	1.000	+/-	13.295
Zr	1.000	+/-	51.184
Y	1.000	+/-	12.479
Sr	136.033	+/-	8.368
Rb	1.000	+/-	28.888
Th	1.000	+/-	727.190
Bi	1.000	+/-	593.480
Au	1.000	+/-	30.564
As	3823.767	+/-	139.162
Se	1.000	+/-	13.610
Pb	9146.681	+/-	190.256
Hg	1.000	+/-	18.051
Zn	1.000	+/-	42.228
Cu	73819.188	+/-	1040.801
Ni	1.000	+/-	35.454
Co	1.000	+/-	45.701
Fe	2256.485	+/-	121.209
Mn	105.914	+/-	82.003
Cr	1.000	+/-	26.911
V	1.000	+/-	31.077
Ti	437.087	+/-	153.114
Ca	8084.673	+/-	210.104
K	2699.469	+/-	190.717
Al	823.733	+/-	511.656
P	746.805	+/-	95.914
Si	5681.240	+/-	377.767
Cl	1721.099	+/-	56.198
S	8562.966	+/-	155.169
Mg	1.000	+/-	4902.123

mRFA -Ergebnisse

XL3t-69288

Reading No 10  
Mode Mining  
Time 2018-09-14 12:08  
Duration 121.60  
Units ppm  
Sigma Value 2  
Sequence Final  
Flags 3mm  
INV NR Gm4  
OBJEKT TAFELGEMAELEN  
MATERIAL HOLZ METALL FASSUNG  
ANALYSESTELLE P9 ERBSENBLUETE 4  
MESSAUFBAU STATIV  
FILTER m30lo30hi30li30  
User Login Raquet



	ppm	+/-	Error
Ce	1.000	+/-	157.499
La	1.000	+/-	128.506
Ba	1.000	+/-	133.489
Sb	1.000	+/-	68.633
Sn	1196.242	+/-	71.008
Cd	1.000	+/-	16.499
Ag	1.000	+/-	9.780
Bal	881665.875	+/-	1348.217
Nb	1.000	+/-	34.176
Zr	1.000	+/-	87.036
Y	1.000	+/-	21.260
Sr	123.518	+/-	9.150
Rb	1.000	+/-	47.465
Th	1.000	+/-	1185.434
Bi	1.000	+/-	1033.232
Au	1.000	+/-	36.884
As	6322.774	+/-	228.186
Se	1.000	+/-	19.586
Pb	24403.152	+/-	524.629
Hg	1.000	+/-	21.505
Zn	1.000	+/-	37.715
Cu	46753.895	+/-	886.452
Ni	1.000	+/-	39.124
Co	1.000	+/-	63.213
Fe	1233.002	+/-	105.646
Mn	151.823	+/-	91.833
Cr	1.000	+/-	28.254
V	1.000	+/-	24.832
Ti	120.985	+/-	120.226
Ca	6819.012	+/-	239.264
K	2668.228	+/-	218.312
Al	1315.469	+/-	606.283
P	1117.395	+/-	129.726
Si	6779.597	+/-	443.155
Cl	2500.670	+/-	79.084
S	16828.453	+/-	348.830
Mg	1.000	+/-	6460.603