

mRFA -Ergebnisse

XL3t-69288

Reading No 1
Mode Mining
Time 2018-01-12 11:31
Duration 120.39
Units ppm
Sigma Value 2
Sequence Final
Flags
INV NR Gm1809
OBJEKT TAFELGEMAELEN
MATERIAL HOLZ METALL FASSUNG
ANALYSESTELLE P1 NIMBUS CHRISTI
MESSAUFBAU STATIV
FILTER m30lo30hi30li30
User Login Raquet



	ppm	+/-	Error
Ce	-339.000	+/-	76.134
La	1.000	+/-	34.732
Ba	1.000	+/-	37.334
Sb	1.000	+/-	13.298
Sn	72.418	+/-	10.056
Cd	5.940	+/-	5.219
Ag	454.299	+/-	12.402
Bal	929474.000	+/-	394.861
Nb	7.959	+/-	5.949
Zr	1.000	+/-	22.723
Y	1.000	+/-	4.847
Sr	179.630	+/-	4.675
Rb	1.000	+/-	12.076
Th	1.000	+/-	314.503
Bi	1.000	+/-	321.504
Au	501.720	+/-	22.597
As	1866.245	+/-	59.178
Se	1.000	+/-	6.437
Pb	6336.865	+/-	75.014
Hg	1.000	+/-	5.094
Zn	23.427	+/-	8.569
Cu	1691.553	+/-	41.296
Ni	1.000	+/-	21.730
Co	1.000	+/-	30.000
Fe	3499.999	+/-	98.712
Mn	1.000	+/-	49.101
Cr	22.589	+/-	16.689
V	1.000	+/-	22.326
Ti	319.980	+/-	83.733
Ca	40695.777	+/-	436.177
K	2061.445	+/-	157.775
Al	1.000	+/-	435.179
P	2951.764	+/-	106.518
Si	3374.384	+/-	264.041
Cl	1275.442	+/-	33.953
S	5184.483	+/-	80.555
Mg	1.000	+/-	4842.672

mRFA -Ergebnisse

XL3t-69288

Reading No 2
Mode Mining
Time 2018-01-12 11:35
Duration 120.32
Units ppm
Sigma Value 2
Sequence Final
Flags
INV NR Gm1809
OBJEKT TAFELGEMAELEN
MATERIAL HOLZ METALL FASSUNG
ANALYSESTELLE P2 NIMBUS ROTLACK
MESSAUFBAU STATIV
FILTER m30lo30hi30li30
User Login Raquet



	ppm	+/-	Error
Ce	-339.000	+/-	77.227
La	1.000	+/-	35.315
Ba	1.000	+/-	38.030
Sb	1.000	+/-	15.779
Sn	81.846	+/-	10.128
Cd	14.679	+/-	5.513
Ag	408.006	+/-	11.818
Bal	927408.438	+/-	410.676
Nb	11.253	+/-	6.299
Zr	1.000	+/-	24.722
Y	1.000	+/-	5.101
Sr	180.357	+/-	4.806
Rb	1.000	+/-	14.494
Th	1.000	+/-	332.494
Bi	1.000	+/-	352.243
Au	463.527	+/-	22.508
As	1842.243	+/-	61.323
Se	1.000	+/-	8.411
Pb	6596.363	+/-	79.937
Hg	1.000	+/-	5.481
Zn	37.797	+/-	9.312
Cu	1902.212	+/-	45.178
Ni	1.000	+/-	22.794
Co	1.000	+/-	31.006
Fe	3777.079	+/-	104.948
Mn	1.000	+/-	53.229
Cr	17.509	+/-	16.919
V	1.000	+/-	22.670
Ti	144.665	+/-	85.793
Ca	43455.891	+/-	471.587
K	2659.792	+/-	146.471
Al	1.000	+/-	412.583
P	1190.243	+/-	84.465
Si	4054.486	+/-	272.584
Cl	1016.434	+/-	30.662
S	4737.144	+/-	77.515
Mg	1.000	+/-	4708.071

mRFA -Ergebnisse

XL3t-69288

Reading No 3
Mode Mining
Time 2018-01-12 11:39
Duration 122.10
Units ppm
Sigma Value 2
Sequence Final
Flags
INV NR Gm1809
OBJEKT TAFELGEMAELEN
MATERIAL HOLZ METALL FASSUNG
ANALYSESTELLE P3 NIMBUS CHRISTI UNTEN
MESSAUFBAU STATIV
FILTER m30lo30hi30li30
User Login Raquet



	ppm	+/-	Error
Ce	-339.000	+/-	67.757
La	1.000	+/-	31.076
Ba	1.000	+/-	33.457
Sb	1.000	+/-	13.366
Sn	123.023	+/-	9.516
Cd	22.883	+/-	5.124
Ag	337.853	+/-	9.717
Bal	921667.500	+/-	428.239
Nb	10.265	+/-	5.304
Zr	1.000	+/-	18.865
Y	1.000	+/-	4.197
Sr	150.910	+/-	4.071
Rb	1.000	+/-	12.906
Th	1.000	+/-	279.434
Bi	1.000	+/-	274.637
Au	566.576	+/-	22.316
As	1538.287	+/-	51.038
Se	1.000	+/-	8.189
Pb	5106.325	+/-	60.494
Hg	1.000	+/-	4.471
Zn	31.734	+/-	8.392
Cu	1271.949	+/-	34.024
Ni	1.000	+/-	20.839
Co	1.000	+/-	28.849
Fe	3712.397	+/-	97.900
Mn	1.000	+/-	48.770
Cr	39.331	+/-	16.019
V	1.000	+/-	16.185
Ti	275.357	+/-	76.107
Ca	47737.355	+/-	469.475
K	2220.550	+/-	144.071
Al	1.000	+/-	679.669
P	4180.584	+/-	118.712
Si	3618.554	+/-	265.267
Cl	1417.878	+/-	32.995
S	5970.739	+/-	84.604
Mg	1.000	+/-	4652.980

mRFA -Ergebnisse

XL3t-69288

Reading No 4
Mode Mining
Time 2018-01-12 11:44
Duration 120.10
Units ppm
Sigma Value 2
Sequence Final
Flags
INV NR Gm1809
OBJEKT TAFELGEMAELEN
MATERIAL HOLZ METALL FASSUNG
ANALYSESTELLE P4 NIMBUS JOHANNES
MESSAUFBAU STATIV
FILTER m30lo30hi30li30
User Login Raquet

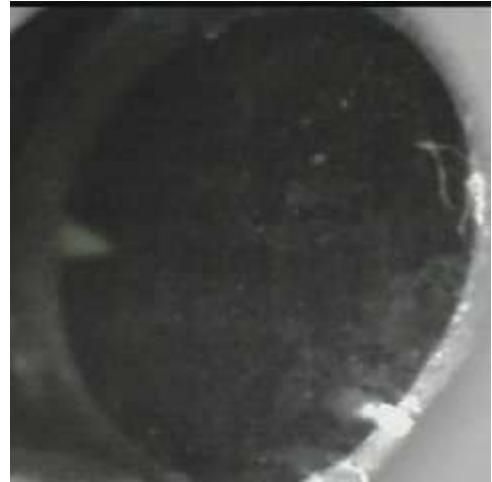


	ppm	+/-	Error
Ce	-339.000	+/-	80.578
La	1.000	+/-	37.083
Ba	1.000	+/-	39.778
Sb	1.000	+/-	13.498
Sn	240.573	+/-	13.636
Cd	17.225	+/-	5.794
Ag	725.070	+/-	16.504
Bal	938388.500	+/-	369.151
Nb	14.979	+/-	8.268
Zr	1.000	+/-	35.414
Y	1.000	+/-	6.884
Sr	192.302	+/-	5.568
Rb	1.000	+/-	18.880
Th	1.000	+/-	430.299
Bi	1.000	+/-	495.464
Au	1014.114	+/-	34.847
As	2776.613	+/-	82.418
Se	1.000	+/-	10.808
Pb	9712.590	+/-	125.923
Hg	1.000	+/-	7.108
Zn	61.722	+/-	11.469
Cu	2213.912	+/-	53.832
Ni	1.000	+/-	25.444
Co	1.000	+/-	38.199
Fe	5303.966	+/-	136.215
Mn	1.000	+/-	55.334
Cr	49.806	+/-	18.303
V	1.000	+/-	20.124
Ti	260.951	+/-	86.293
Ca	20510.744	+/-	296.211
K	2878.598	+/-	178.578
Al	651.412	+/-	395.807
P	5640.215	+/-	138.327
Si	2157.163	+/-	232.048
Cl	1505.851	+/-	35.879
S	5683.606	+/-	93.454
Mg	1.000	+/-	4502.741

mRFA -Ergebnisse

XL3t-69288

Reading No 5
Mode Mining
Time 2018-01-12 11:48
Duration 121.29
Units ppm
Sigma Value 2
Sequence Final
Flags
INV NR Gm1809
OBJEKT TAFELGEMAELEN
MATERIAL HOLZ METALL FASSUNG
ANALYSESTELLE P5 GEISSELSAUELE
MESSAUFBAU STATIV
FILTER m30lo30hi30li30
User Login Raquet



	ppm	+/-	Error
Ce	-339.000	+/-	70.426
La	1.000	+/-	32.455
Ba	1.000	+/-	34.791
Sb	1.000	+/-	14.639
Sn	27.922	+/-	7.011
Cd	13.161	+/-	4.995
Ag	6.268	+/-	3.280
Bal	898210.813	+/-	571.648
Nb	7.812	+/-	5.840
Zr	1.000	+/-	20.992
Y	1.000	+/-	4.660
Sr	200.499	+/-	4.983
Rb	1.000	+/-	10.891
Th	1.000	+/-	309.770
Bi	1.000	+/-	302.697
Au	1.000	+/-	8.671
As	1538.937	+/-	55.746
Se	1.000	+/-	7.164
Pb	5571.371	+/-	67.744
Hg	1.000	+/-	5.205
Zn	1.000	+/-	10.838
Cu	9180.313	+/-	121.025
Ni	1.000	+/-	22.455
Co	1.000	+/-	57.201
Fe	17227.107	+/-	235.349
Mn	1.000	+/-	57.587
Cr	36.271	+/-	20.189
V	1.000	+/-	24.518
Ti	104.039	+/-	91.383
Ca	43689.781	+/-	444.721
K	6751.952	+/-	210.121
Al	1.000	+/-	396.286
P	1.000	+/-	53.900
Si	2379.262	+/-	203.849
Cl	857.797	+/-	25.389
S	3719.833	+/-	59.859
Mg	10476.793	+/-	5011.217