

## Certificate of Verification

XL3t-69288

Reading No 1  
Mode Mining  
Time 2017-01-24 14:45  
Duration 120.29  
Units ppm  
Sigma Value 2  
Sequence Final  
Flags  
INV NR Gm515b  
OBJEKT TAFELGEMAELENDE  
MATERIAL HOLZ METALL FASSUNG  
**ANALYSESTELLE** **P1** NIMBUS  
MESSAUFBAU STATIV  
FILTER m30lo30hi30li30  
User Login Raquet



	ppm	+/-	Error
Ce	-339.000	+/-	77.600
La	1.000	+/-	35.770
Ba	1.000	+/-	38.339
Sb	1.000	+/-	19.740
Sn	106.909	+/-	10.577
Cd	12.240	+/-	5.428
Ag	431.775	+/-	12.047
Bal	882491.375	+/-	684.341
Nb	13.666	+/-	8.098
Zr	1.000	+/-	29.131
Y	1.000	+/-	6.606
Sr	94.561	+/-	3.805
Rb	1.000	+/-	16.229
Th	1.000	+/-	425.524
Bi	1.000	+/-	414.455
Au	104.820	+/-	17.366
As	2466.301	+/-	77.362
Se	1.000	+/-	7.782
Pb	9635.646	+/-	120.418
Hg	1.000	+/-	6.147
Zn	47.032	+/-	9.541
Cu	2342.960	+/-	53.641
Ni	1.000	+/-	23.014
Co	1.000	+/-	43.012
Fe	7688.769	+/-	162.802
Mn	1.000	+/-	77.013
Cr	22.066	+/-	15.506
V	18.297	+/-	15.309
Ti	266.737	+/-	84.644
Ca	33795.828	+/-	423.305
K	3048.115	+/-	171.716
Al	5039.999	+/-	581.571
P	3100.912	+/-	119.499
Si	34409.516	+/-	695.089
Cl	1835.034	+/-	38.304
S	13027.385	+/-	172.304
Mg	1.000	+/-	4970.021

Supervised By: \_\_\_\_\_

## Certificate of Verification

XL3t-69288

Reading No 2  
Mode Mining  
Time 2017-01-24 14:48  
Duration 121.08  
Units ppm  
Sigma Value 2  
Sequence Final  
Flags  
INV NR Gm515b  
OBJEKT TAFELGEMAELEN  
MATERIAL HOLZ METALL FASSUNG  
**ANALYSESTELLE P2 KRONE**  
MESSAUFBAU STATIV  
FILTER m30lo30hi30li30  
User Login Raquet



	ppm	+/-	Error
Ce	-339.000	+/-	69.788
La	1.000	+/-	31.982
Ba	1.000	+/-	34.260
Sb	15.977	+/-	12.707
Sn	86.194	+/-	9.673
Cd	16.638	+/-	5.112
Ag	448.394	+/-	11.786
Bal	905320.563	+/-	543.197
Nb	16.459	+/-	7.259
Zr	1.000	+/-	26.012
Y	1.000	+/-	5.872
Sr	32.931	+/-	2.490
Rb	1.000	+/-	14.669
Th	1.000	+/-	380.863
Bi	1.000	+/-	349.153
Au	137.045	+/-	16.766
As	2208.341	+/-	69.274
Se	1.000	+/-	7.887
Pb	8535.376	+/-	101.905
Hg	1.000	+/-	5.643
Zn	45.491	+/-	9.081
Cu	2207.307	+/-	49.241
Ni	1.000	+/-	22.021
Co	1.000	+/-	38.421
Fe	6523.128	+/-	140.640
Mn	1.000	+/-	49.995
Cr	1.000	+/-	21.154
V	1.000	+/-	19.294
Ti	212.540	+/-	69.588
Ca	25107.047	+/-	316.364
K	2252.461	+/-	143.098
Al	3616.338	+/-	496.573
P	3011.985	+/-	112.428
Si	25489.020	+/-	565.126
Cl	1681.031	+/-	34.931
S	13035.743	+/-	165.486
Mg	1.000	+/-	4417.438

Supervised By: \_\_\_\_\_

## Certificate of Verification

XL3t-69288

Reading No 3  
Mode Mining  
Time 2017-01-24 14:52  
Duration 122.20  
Units ppm  
Sigma Value 2  
Sequence Final  
Flags  
INV NR Gm515b  
OBJEKT TAFELGEMAELEN  
MATERIAL HOLZ METALL FASSUNG  
**ANALYSESTELLE P3 SCHWARZZEICHNUNG**  
MESSAUFBAU STATIV  
FILTER m30lo30hi30li30  
User Login Raquet



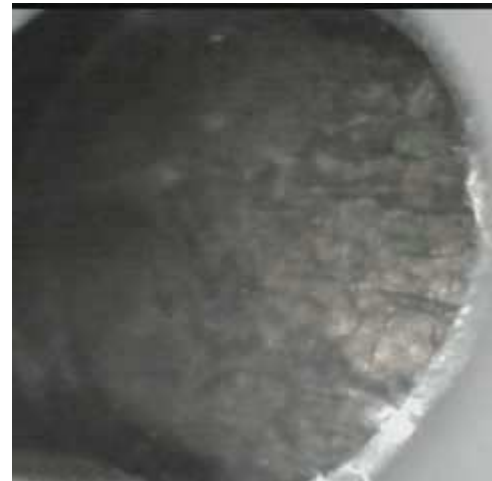
	ppm	+/-	Error
Ce	-339.000	+/-	74.880
La	1.000	+/-	34.119
Ba	1.000	+/-	36.919
Sb	1.000	+/-	12.538
Sn	116.401	+/-	10.726
Cd	15.068	+/-	5.340
Ag	504.770	+/-	12.918
Bal	878175.063	+/-	718.872
Nb	19.128	+/-	9.358
Zr	1.000	+/-	33.338
Y	1.000	+/-	7.721
Sr	33.763	+/-	2.848
Rb	1.000	+/-	19.414
Th	1.000	+/-	484.081
Bi	1.000	+/-	416.597
Au	331.191	+/-	23.510
As	3141.134	+/-	89.496
Se	1.000	+/-	9.589
Pb	12422.787	+/-	153.216
Hg	1.000	+/-	7.228
Zn	210.457	+/-	14.440
Cu	2568.022	+/-	56.986
Ni	1.000	+/-	23.380
Co	1.000	+/-	41.717
Fe	6999.668	+/-	154.511
Mn	1.000	+/-	52.671
Cr	40.916	+/-	15.133
V	15.984	+/-	14.734
Ti	185.045	+/-	80.470
Ca	29107.820	+/-	376.349
K	3331.909	+/-	157.292
Al	5939.676	+/-	601.799
P	3412.450	+/-	125.838
Si	36070.551	+/-	714.554
Cl	1323.366	+/-	32.219
S	16034.849	+/-	208.744
Mg	1.000	+/-	4787.498

Supervised By: \_\_\_\_\_

## Certificate of Verification

XL3t-69288

Reading No 4  
Mode Mining  
Time 2017-01-24 14:55  
Duration 122.04  
Units ppm  
Sigma Value 2  
Sequence Final  
Flags  
INV NR Gm515b  
OBJEKT TAFELGEMAELEN  
MATERIAL HOLZ METALL FASSUNG  
**ANALYSESTELLE P4 KELCH**  
MESSAUFBAU STATIV  
FILTER m30lo30hi30li30  
User Login Raquet



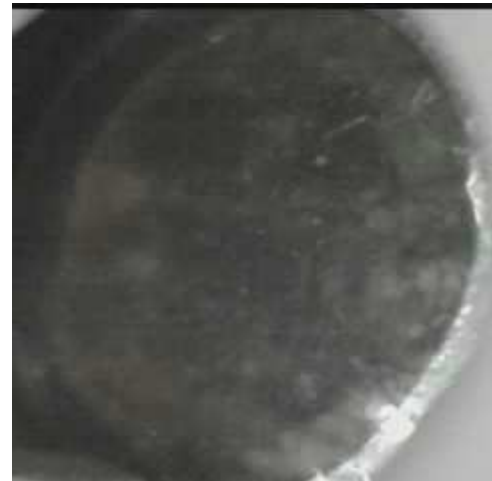
	ppm	+/-	Error
Ce	-339.000	+/-	68.142
La	1.000	+/-	31.078
Ba	1.000	+/-	33.461
Sb	1.000	+/-	17.433
Sn	127.453	+/-	10.330
Cd	16.398	+/-	4.932
Ag	582.525	+/-	13.131
Bal	890822.688	+/-	641.545
Nb	21.938	+/-	8.679
Zr	1.000	+/-	31.843
Y	1.000	+/-	7.097
Sr	33.287	+/-	2.733
Rb	1.000	+/-	15.815
Th	1.000	+/-	450.380
Bi	1.000	+/-	442.342
Au	426.032	+/-	24.389
As	2890.898	+/-	83.763
Se	1.000	+/-	9.118
Pb	11190.103	+/-	138.663
Hg	1.000	+/-	6.823
Zn	45.013	+/-	10.435
Cu	3497.912	+/-	68.952
Ni	1.000	+/-	22.794
Co	1.000	+/-	43.410
Fe	8077.430	+/-	166.262
Mn	1.000	+/-	50.232
Cr	28.733	+/-	16.282
V	18.727	+/-	13.737
Ti	212.971	+/-	76.668
Ca	20315.613	+/-	294.782
K	2200.853	+/-	177.999
Al	5124.074	+/-	561.333
P	8637.387	+/-	179.465
Si	26123.350	+/-	591.906
Cl	3045.573	+/-	51.546
S	16560.998	+/-	215.318
Mg	1.000	+/-	4748.894

Supervised By: \_\_\_\_\_

## Certificate of Verification

XL3t-69288

Reading No 5  
Mode Mining  
Time 2017-01-24 14:59  
Duration 121.42  
Units ppm  
Sigma Value 2  
Sequence Final  
Flags  
INV NR Gm515b  
OBJEKT TAFELGEMAELEN  
MATERIAL HOLZ METALL FASSUNG  
**ANALYSESTELLE P5 SCHWARZZEICHNUNG**  
MESSAUFBAU STATIV  
FILTER m30lo30hi30li30  
User Login Raquet



	ppm	+/-	Error
Ce	-339.000	+/-	49.825
La	1.000	+/-	22.770
Ba	1.000	+/-	24.712
Sb	10.038	+/-	9.340
Sn	9.804	+/-	4.927
Cd	16.619	+/-	3.848
Ag	7.433	+/-	2.521
Bal	852460.500	+/-	654.181
Nb	12.214	+/-	2.445
Zr	8.071	+/-	7.640
Y	1.000	+/-	1.393
Sr	30.830	+/-	1.667
Rb	1.000	+/-	3.700
Th	1.000	+/-	108.029
Bi	1.000	+/-	104.128
Au	1.000	+/-	3.350
As	245.487	+/-	17.774
Se	1.000	+/-	2.124
Pb	855.778	+/-	15.431
Hg	1.000	+/-	1.650
Zn	5.385	+/-	4.960
Cu	296.909	+/-	15.351
Ni	1.000	+/-	15.836
Co	1.000	+/-	13.735
Fe	476.728	+/-	37.810
Mn	1.000	+/-	37.906
Cr	1.000	+/-	13.202
V	1.000	+/-	13.873
Ti	63.782	+/-	56.953
Ca	98962.594	+/-	585.755
K	739.686	+/-	97.113
Al	2277.375	+/-	641.413
P	264.715	+/-	113.868
Si	12106.906	+/-	448.315
Cl	681.665	+/-	26.317
S	18726.332	+/-	158.518
Mg	11741.204	+/-	6737.320

Supervised By: \_\_\_\_\_