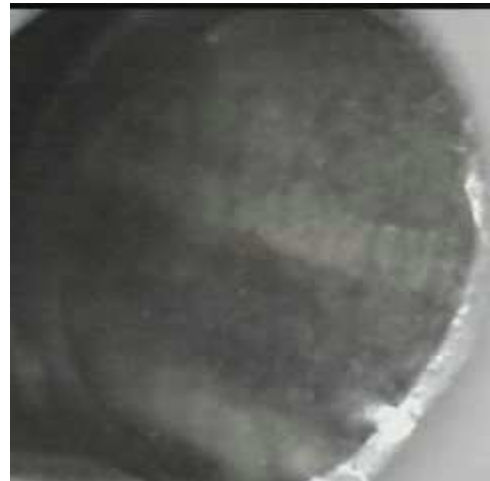


Certificate of Verification

XL3t-69288

Reading No 2
Mode Mining
Time 2017-01-24 18:07
Duration 121.54
Units ppm
Sigma Value 2
Sequence Final
Flags
INV NR Gm514a
OBJEKT TAFELGEMAELEN
MATERIAL HOLZ METALL FASSUNG
ANALYSESTELLE **P12** AMIKT
MESSAUFBAU STATIV
FILTER m30lo30hi30li30
User Login Raquet



	ppm	+/-	Error
Ce	-339.000	+/-	67.320
La	1.000	+/-	30.999
Ba	1.000	+/-	33.276
Sb	15.923	+/-	12.295
Sn	334.940	+/-	13.253
Cd	18.352	+/-	5.057
Ag	574.833	+/-	13.172
Bal	868919.750	+/-	719.945
Nb	20.866	+/-	6.836
Zr	1.000	+/-	34.715
Y	1.000	+/-	5.560
Sr	69.700	+/-	3.116
Rb	1.000	+/-	10.560
Th	1.000	+/-	359.820
Bi	1.000	+/-	405.204
Au	1.000	+/-	9.332
As	2156.655	+/-	67.132
Se	1.000	+/-	9.736
Pb	8136.127	+/-	96.935
Hg	1.000	+/-	5.424
Zn	129.546	+/-	10.888
Cu	1670.409	+/-	41.562
Ni	1.000	+/-	21.487
Co	1.000	+/-	38.377
Fe	6635.504	+/-	141.186
Mn	1.000	+/-	48.617
Cr	82.091	+/-	17.232
V	16.371	+/-	15.318
Ti	142.227	+/-	82.669
Ca	56906.066	+/-	606.839
K	2062.563	+/-	182.696
Al	12298.757	+/-	869.110
P	2360.379	+/-	120.257
Si	22941.475	+/-	591.315
Cl	2705.180	+/-	49.087
S	11802.292	+/-	152.415
Mg	1.000	+/-	5707.273

Supervised By: _____

Certificate of Verification

XL3t-69288

Reading No 6
Mode Mining
Time 2017-01-24 18:27
Duration 121.73
Units ppm
Sigma Value 2
Sequence Final
Flags
INV NR Gm514a
OBJEKT TAFELGEMAELEN
MATERIAL HOLZ METALL FASSUNG
ANALYSESTELLE P13 AMIKT
MESSAUFBAU STATIV
FILTER m30lo30hi30li30
User Login Raquet



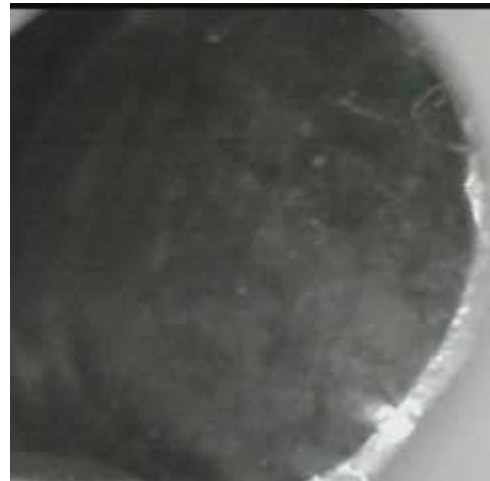
	ppm	+/-	Error
Ce	-339.000	+/-	162.036
La	1.000	+/-	74.309
Ba	1.000	+/-	78.865
Sb	29.277	+/-	26.917
Sn	122.060	+/-	21.386
Cd	1.000	+/-	8.947
Ag	1092.977	+/-	33.275
Bal	780605.688	+/-	2250.830
Nb	129.590	+/-	39.268
Zr	1.000	+/-	123.570
Y	1.000	+/-	31.814
Sr	36.704	+/-	8.374
Rb	1.000	+/-	63.800
Th	1.000	+/-	1674.997
Bi	1.000	+/-	1519.476
Au	1.000	+/-	42.324
As	9208.468	+/-	303.081
Se	22.136	+/-	18.238
Pb	60898.434	+/-	1098.101
Hg	1.000	+/-	27.095
Zn	156.377	+/-	26.503
Cu	16362.031	+/-	327.826
Ni	1.000	+/-	42.651
Co	1.000	+/-	53.585
Fe	4851.803	+/-	178.623
Mn	1.000	+/-	126.549
Cr	507.840	+/-	30.910
V	1.000	+/-	27.774
Ti	1.000	+/-	123.345
Ca	26671.619	+/-	513.232
K	1856.392	+/-	183.129
Al	18191.990	+/-	1240.101
P	5551.220	+/-	191.841
Si	23845.939	+/-	713.347
Cl	3615.719	+/-	83.116
S	25802.842	+/-	486.187
Mg	20440.957	+/-	8462.277

Supervised By: _____

Certificate of Verification

XL3t-69288

Reading No 7
Mode Mining
Time 2017-01-24 18:30
Duration 120.83
Units ppm
Sigma Value 2
Sequence Final
Flags
INV NR Gm514a
OBJEKT TAFELGEMAELEN
MATERIAL HOLZ METALL FASSUNG
ANALYSESTELLE P14 AMIKT
MESSAUFBAU STATIV
FILTER m30lo30hi30li30
User Login Raquet



	ppm	+/-	Error
Ce	-339.000	+/-	74.526
La	1.000	+/-	34.217
Ba	1.000	+/-	36.715
Sb	1.000	+/-	14.254
Sn	229.549	+/-	13.221
Cd	21.333	+/-	5.470
Ag	887.665	+/-	17.731
Bal	863748.313	+/-	871.023
Nb	27.017	+/-	10.716
Zr	1.000	+/-	43.487
Y	1.000	+/-	9.053
Sr	50.594	+/-	3.526
Rb	1.000	+/-	19.342
Th	1.000	+/-	550.562
Bi	1.000	+/-	576.743
Au	140.753	+/-	22.253
As	3414.027	+/-	103.355
Se	1.000	+/-	15.031
Pb	14349.213	+/-	191.424
Hg	1.000	+/-	8.376
Zn	414.136	+/-	22.409
Cu	11384.381	+/-	179.287
Ni	1.000	+/-	26.061
Co	1.000	+/-	59.429
Fe	14349.785	+/-	252.262
Mn	96.045	+/-	63.313
Cr	1326.055	+/-	33.799
V	1.000	+/-	34.660
Ti	156.591	+/-	129.133
Ca	23574.688	+/-	345.642
K	2116.397	+/-	166.800
Al	15655.400	+/-	947.604
P	5060.261	+/-	154.433
Si	25294.742	+/-	640.078
Cl	2593.574	+/-	50.143
S	15109.431	+/-	211.432
Mg	1.000	+/-	5551.793

Supervised By: _____

Certificate of Verification

XL3t-69288

Reading No 10
Mode Mining
Time 2017-01-24 18:47
Duration 121.85
Units ppm
Sigma Value 2
Sequence Final
Flags
INV NR Gm514a
OBJEKT TAFELGEMAELEN
MATERIAL HOLZ METALL FASSUNG
ANALYSESTELLE P15 AMIKT
MESSAUFBAU STATIV
FILTER m30lo30hi30li30
User Login Raquet



	ppm	+/-	Error
Ce	-339.000	+/-	98.375
La	1.000	+/-	45.223
Ba	1.000	+/-	48.254
Sb	1.000	+/-	16.247
Sn	176.139	+/-	13.640
Cd	16.209	+/-	6.782
Ag	311.466	+/-	12.200
Bal	824646.125	+/-	1169.523
Nb	41.603	+/-	15.026
Zr	1.000	+/-	51.915
Y	1.000	+/-	12.457
Sr	147.862	+/-	6.136
Rb	1.000	+/-	24.507
Th	1.000	+/-	750.160
Bi	1.000	+/-	742.885
Au	1.000	+/-	19.998
As	5344.565	+/-	145.216
Se	1.000	+/-	14.910
Pb	22246.365	+/-	316.586
Hg	1.000	+/-	13.562
Zn	149.145	+/-	13.580
Cu	843.265	+/-	35.957
Ni	1.000	+/-	28.928
Co	1.000	+/-	32.914
Fe	2389.282	+/-	102.555
Mn	1.000	+/-	90.493
Cr	106.723	+/-	21.584
V	1.000	+/-	21.759
Ti	1.000	+/-	101.810
Ca	83537.266	+/-	1083.220
K	1361.683	+/-	162.184
Al	12334.037	+/-	1107.026
P	3382.664	+/-	157.742
Si	21095.238	+/-	645.553
Cl	3308.401	+/-	66.138
S	18561.939	+/-	277.644
Mg	1.000	+/-	12473.469

Supervised By: _____

Certificate of Verification

XL3t-69288

Reading No 11
Mode Mining
Time 2017-01-24 18:50
Duration 121.90
Units ppm
Sigma Value 2
Sequence Final
Flags
INV NR Gm514a
OBJEKT TAFELGEMAELEN
MATERIAL HOLZ METALL FASSUNG
ANALYSESTELLE P16 AMIKT
MESSAUFBAU STATIV
FILTER m30lo30hi30li30
User Login Raquet



	ppm	+/-	Error
Ce	-339.000	+/-	78.925
La	1.000	+/-	36.180
Ba	1.000	+/-	38.735
Sb	1.000	+/-	20.495
Sn	566.687	+/-	17.764
Cd	15.905	+/-	5.722
Ag	586.595	+/-	14.670
Bal	848032.688	+/-	903.010
Nb	23.560	+/-	9.289
Zr	1.000	+/-	33.086
Y	1.000	+/-	7.639
Sr	63.532	+/-	3.606
Rb	1.000	+/-	15.740
Th	1.000	+/-	483.161
Bi	1.000	+/-	455.258
Au	1.000	+/-	14.326
As	2750.255	+/-	87.703
Se	1.000	+/-	10.166
Pb	12252.294	+/-	152.395
Hg	38.872	+/-	10.884
Zn	163.753	+/-	13.000
Cu	1352.776	+/-	39.923
Ni	1.000	+/-	24.297
Co	1.000	+/-	35.314
Fe	4474.098	+/-	122.494
Mn	1.000	+/-	65.983
Cr	69.468	+/-	18.251
V	1.000	+/-	16.016
Ti	1.000	+/-	132.149
Ca	63761.578	+/-	723.210
K	2180.410	+/-	158.521
Al	15679.257	+/-	1001.368
P	1086.924	+/-	109.152
Si	24517.021	+/-	627.173
Cl	2101.608	+/-	44.324
S	12935.510	+/-	175.766
Mg	7347.176	+/-	6281.095

Supervised By: _____