

Certificate of Verification

XL3t-69288

Reading No 1
Mode Mining
Time 2017-01-24 12:21
Duration 121.33
Units ppm
Sigma Value 2
Sequence Final
Flags
INV NR Gm514a
OBJEKT TAFELGEMAELEN
MATERIAL HOLZ METALL FASSUNG
ANALYSESTELLE **P1** ENGEL AUSSEN
MESSAUFBAU STATIV
FILTER m30lo30hi30li30
User Login Raquet



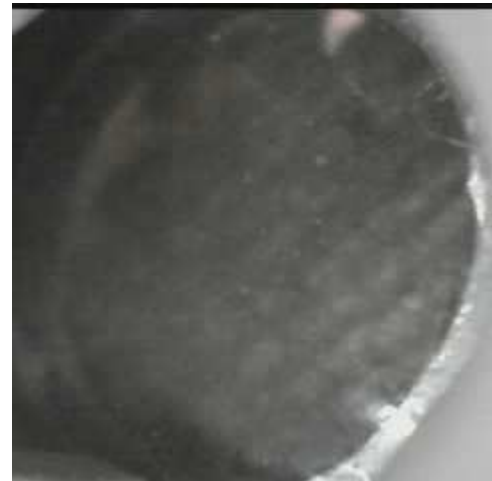
	ppm	+/-	Error
Ce	-339.000	+/-	103.667
La	1.000	+/-	47.402
Ba	1.000	+/-	50.855
Sb	1.000	+/-	18.689
Sn	4442.879	+/-	67.819
Cd	47.849	+/-	8.467
Ag	177.521	+/-	9.573
Bal	882033.625	+/-	870.585
Nb	48.143	+/-	15.810
Zr	1.000	+/-	59.440
Y	1.000	+/-	13.385
Sr	38.394	+/-	4.224
Rb	1.000	+/-	25.423
Th	1.000	+/-	773.272
Bi	1.000	+/-	781.990
Au	1.000	+/-	22.193
As	3306.005	+/-	135.468
Se	1.000	+/-	16.476
Pb	23328.281	+/-	344.601
Hg	1.000	+/-	11.047
Zn	77.806	+/-	12.909
Cu	2774.002	+/-	73.020
Ni	1.000	+/-	31.134
Co	1.000	+/-	59.687
Fe	9719.915	+/-	231.708
Mn	1.000	+/-	61.336
Cr	40.825	+/-	22.534
V	1.000	+/-	18.217
Ti	1.000	+/-	138.975
Ca	35455.316	+/-	565.225
K	1697.067	+/-	180.216
Al	3545.445	+/-	594.776
P	1113.774	+/-	100.681
Si	19736.049	+/-	574.770
Cl	989.230	+/-	32.964
S	11427.924	+/-	195.410
Mg	1.000	+/-	5135.338

Supervised By: _____

Certificate of Verification

XL3t-69288

Reading No 2
Mode Mining
Time 2017-01-24 12:27
Duration 120.43
Units ppm
Sigma Value 2
Sequence Final
Flags
INV NR Gm514a
OBJEKT TAFELGEMAELEN
MATERIAL HOLZ METALL FASSUNG
ANALYSESTELLE P2 ENGEL AUSSEN
MESSAUFBAU STATIV
FILTER m30lo30hi30li30
User Login Raquet



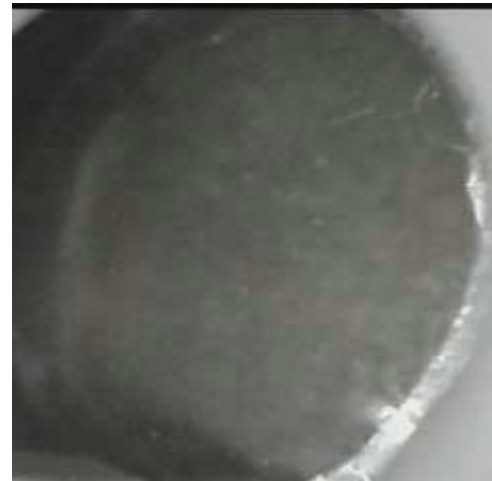
	ppm	+/-	Error
Ce	-339.000	+/-	205.724
La	1.000	+/-	93.407
Ba	1.000	+/-	98.534
Sb	1.000	+/-	29.532
Sn	23673.564	+/-	374.505
Cd	166.262	+/-	18.385
Ag	770.863	+/-	26.073
Bal	841288.313	+/-	1513.481
Nb	45.919	+/-	22.853
Zr	1.000	+/-	100.983
Y	1.000	+/-	19.876
Sr	6.528	+/-	5.351
Rb	1.000	+/-	36.726
Th	1.000	+/-	1087.285
Bi	1.000	+/-	1246.226
Au	539.088	+/-	42.362
As	1.000	+/-	168.614
Se	1.000	+/-	16.367
Pb	29190.293	+/-	530.074
Hg	74.066	+/-	16.545
Zn	57.734	+/-	18.705
Cu	3501.238	+/-	108.937
Ni	1.000	+/-	47.863
Co	1.000	+/-	69.858
Fe	5919.856	+/-	216.608
Mn	122.674	+/-	95.971
Cr	46.606	+/-	21.754
V	1.000	+/-	18.212
Ti	181.311	+/-	100.159
Ca	26586.377	+/-	597.857
K	3902.241	+/-	295.809
Al	6558.347	+/-	881.149
P	2646.917	+/-	150.040
Si	40560.488	+/-	1106.914
Cl	2030.401	+/-	61.075
S	12130.917	+/-	270.272
Mg	1.000	+/-	7018.856

Supervised By: _____

Certificate of Verification

XL3t-69288

Reading No 16
Mode Mining
Time 2017-01-24 13:41
Duration 122.09
Units ppm
Sigma Value 2
Sequence Final
Flags
INV NR Gm514a
OBJEKT TAFELGEMAELEN
MATERIAL HOLZ METALL FASSUNG
ANALYSESTELLE **P3** ENGEL UNTEN GEWAND INNEN
MESSAUFBAU STATIV
FILTER m30lo30hi30li30
User Login Raquet



	ppm	+/-	Error
Ce	-339.000	+/-	75.666
La	1.000	+/-	34.657
Ba	1.000	+/-	37.159
Sb	15.833	+/-	13.696
Sn	166.909	+/-	12.029
Cd	13.381	+/-	5.436
Ag	526.136	+/-	13.840
Bal	881539.375	+/-	716.885
Nb	16.399	+/-	7.504
Zr	1.000	+/-	31.298
Y	1.000	+/-	6.147
Sr	49.554	+/-	3.024
Rb	1.000	+/-	14.645
Th	1.000	+/-	394.935
Bi	1.000	+/-	404.675
Au	376.108	+/-	22.814
As	1981.773	+/-	70.767
Se	1.000	+/-	7.736
Pb	7859.044	+/-	98.797
Hg	1.000	+/-	5.993
Zn	2493.673	+/-	49.151
Cu	20217.184	+/-	245.131
Ni	1.000	+/-	23.102
Co	1.000	+/-	41.210
Fe	7302.025	+/-	144.995
Mn	1.000	+/-	52.917
Cr	1228.246	+/-	28.720
V	23.152	+/-	17.069
Ti	103.735	+/-	90.216
Ca	22079.309	+/-	288.211
K	1507.746	+/-	135.465
Al	15197.909	+/-	836.914
P	1470.095	+/-	95.213
Si	19331.096	+/-	482.331
Cl	2843.852	+/-	46.161
S	13657.454	+/-	165.155
Mg	1.000	+/-	5934.484

Supervised By: _____

Certificate of Verification

XL3t-69288

Reading No 17
Mode Mining
Time 2017-01-24 13:45
Duration 121.51
Units ppm
Sigma Value 2
Sequence Final
Flags
INV NR Gm514a
OBJEKT TAFELGEMAELEN
MATERIAL HOLZ METALL FASSUNG
ANALYSESTELLE **P4** ENGEL UNTEN STOLA INNEN
MESSAUFBAU STATIV
FILTER m30lo30hi30li30
User Login Raquet



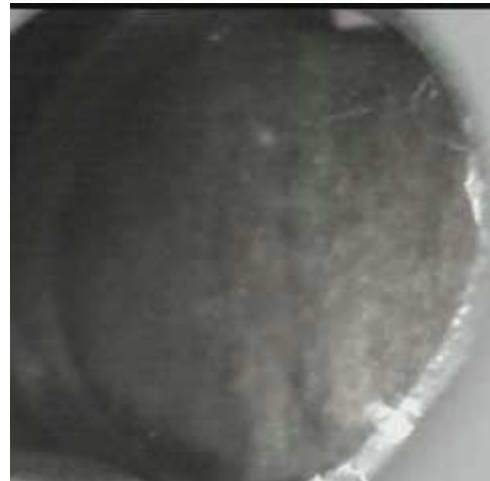
	ppm	+/-	Error
Ce	-339.000	+/-	72.582
La	1.000	+/-	33.270
Ba	1.000	+/-	35.954
Sb	13.187	+/-	13.104
Sn	467.408	+/-	15.656
Cd	18.704	+/-	5.404
Ag	621.561	+/-	14.334
Bal	879438.875	+/-	706.832
Nb	19.522	+/-	8.412
Zr	1.000	+/-	30.101
Y	1.000	+/-	6.883
Sr	77.246	+/-	3.511
Rb	1.000	+/-	14.062
Th	1.000	+/-	439.362
Bi	1.000	+/-	427.338
Au	1.000	+/-	11.308
As	2657.710	+/-	80.386
Se	1.000	+/-	8.174
Pb	10601.063	+/-	130.240
Hg	1.000	+/-	6.293
Zn	165.820	+/-	12.391
Cu	1876.689	+/-	46.555
Ni	1.000	+/-	23.046
Co	1.000	+/-	44.139
Fe	8454.416	+/-	171.029
Mn	1.000	+/-	50.840
Cr	94.710	+/-	17.415
V	1.000	+/-	19.969
Ti	145.880	+/-	85.062
Ca	40123.289	+/-	495.974
K	2327.828	+/-	201.896
Al	15173.684	+/-	914.595
P	1052.757	+/-	99.882
Si	23655.975	+/-	596.606
Cl	2382.676	+/-	46.962
S	10630.979	+/-	148.115
Mg	1.000	+/-	5451.125

Supervised By: _____

Certificate of Verification

XL3t-69288

Reading No 18
Mode Mining
Time 2017-01-24 13:49
Duration 121.07
Units ppm
Sigma Value 2
Sequence Final
Flags
INV NR Gm514a
OBJEKT TAFELGEMAELEN
MATERIAL HOLZ METALL FASSUNG
ANALYSESTELLE **P5** ENGEL UNTEN FLUEGEL INNEN
MESSAUFBAU STATIV
FILTER m30lo30hi30li30
User Login Raquet



	ppm	+/-	Error
Ce	-339.000	+/-	63.682
La	1.000	+/-	29.115
Ba	1.000	+/-	31.453
Sb	1.000	+/-	16.020
Sn	104.623	+/-	8.977
Cd	19.295	+/-	4.749
Ag	381.039	+/-	10.049
Bal	884163.688	+/-	647.267
Nb	16.593	+/-	7.124
Zr	1.000	+/-	25.530
Y	1.000	+/-	5.734
Sr	55.480	+/-	2.879
Rb	1.000	+/-	12.494
Th	1.000	+/-	374.599
Bi	1.000	+/-	345.878
Au	1.000	+/-	10.091
As	2474.424	+/-	69.592
Se	1.000	+/-	6.796
Pb	8495.863	+/-	99.735
Hg	1.000	+/-	5.846
Zn	137.220	+/-	10.816
Cu	1302.709	+/-	35.925
Ni	1.000	+/-	20.963
Co	1.000	+/-	41.695
Fe	8414.259	+/-	160.782
Mn	1.000	+/-	48.880
Cr	356.052	+/-	19.271
V	17.589	+/-	15.578
Ti	269.005	+/-	85.431
Ca	32226.350	+/-	383.738
K	1899.112	+/-	156.861
Al	13867.104	+/-	787.203
P	1977.662	+/-	105.993
Si	26609.180	+/-	583.352
Cl	2487.472	+/-	43.400
S	14725.251	+/-	178.009
Mg	1.000	+/-	4668.281

Supervised By: _____

Certificate of Verification

XL3t-69288

Reading No 19
Mode Mining
Time 2017-01-24 13:52
Duration 121.45
Units ppm
Sigma Value 2
Sequence Final
Flags
INV NR Gm514a
OBJEKT TAFELGEMAELEN
MATERIAL HOLZ METALL FASSUNG
ANALYSESTELLE **P6** ENGEL UNTEN FLUEGEL INNEN
MESSAUFBAU STATIV
FILTER m30lo30hi30li30
User Login Raquet



	ppm	+/-	Error
Ce	-339.000	+/-	68.041
La	1.000	+/-	31.048
Ba	1.000	+/-	33.540
Sb	1.000	+/-	19.185
Sn	144.182	+/-	10.442
Cd	19.550	+/-	5.000
Ag	568.648	+/-	12.818
Bal	888042.813	+/-	664.036
Nb	16.988	+/-	7.796
Zr	1.000	+/-	29.938
Y	1.000	+/-	6.337
Sr	60.056	+/-	3.170
Rb	1.000	+/-	12.814
Th	1.000	+/-	409.474
Bi	1.000	+/-	426.912
Au	310.487	+/-	21.273
As	2227.610	+/-	73.810
Se	1.000	+/-	7.717
Pb	8961.467	+/-	112.020
Hg	1.000	+/-	5.954
Zn	839.664	+/-	27.155
Cu	9543.109	+/-	139.390
Ni	1.000	+/-	22.877
Co	1.000	+/-	40.393
Fe	7684.851	+/-	155.604
Mn	1.000	+/-	50.586
Cr	710.125	+/-	22.671
V	18.750	+/-	15.845
Ti	123.528	+/-	84.385
Ca	25872.328	+/-	331.637
K	1738.073	+/-	145.302
Al	16056.634	+/-	805.702
P	1843.209	+/-	94.193
Si	21723.070	+/-	511.747
Cl	2549.834	+/-	43.623
S	10945.010	+/-	142.897
Mg	1.000	+/-	4441.735

Supervised By: _____

Certificate of Verification

XL3t-69288

Reading No 20
Mode Mining
Time 2017-01-24 13:56
Duration 121.34
Units ppm
Sigma Value 2
Sequence Final
Flags
INV NR Gm514a
OBJEKT TAFELGEMAELEN
MATERIAL HOLZ METALL FASSUNG
ANALYSESTELLE **P7** PORTATIV INNEN
MESSAUFBAU STATIV
FILTER m30lo30hi30li30
User Login Raquet



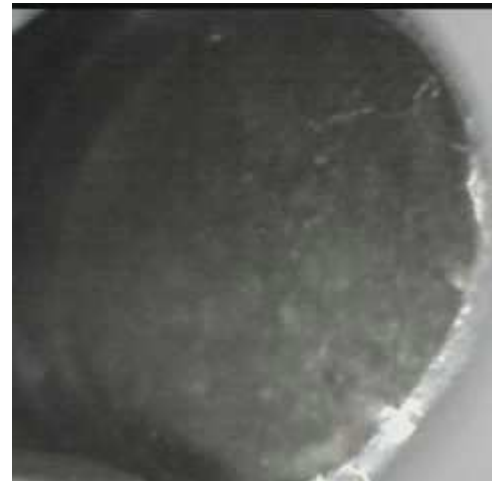
	ppm	+/-	Error
Ce	-339.000	+/-	69.299
La	1.000	+/-	31.824
Ba	1.000	+/-	34.075
Sb	28.979	+/-	12.640
Sn	631.766	+/-	16.400
Cd	27.338	+/-	5.321
Ag	454.255	+/-	11.514
Bal	882546.750	+/-	717.958
Nb	21.008	+/-	9.154
Zr	1.000	+/-	32.649
Y	1.000	+/-	7.455
Sr	55.429	+/-	3.239
Rb	1.000	+/-	19.073
Th	1.000	+/-	474.399
Bi	1.000	+/-	415.604
Au	1.000	+/-	12.160
As	2911.031	+/-	86.759
Se	1.000	+/-	10.169
Pb	11788.045	+/-	146.794
Hg	1.000	+/-	6.659
Zn	288.422	+/-	15.647
Cu	1955.803	+/-	48.592
Ni	1.000	+/-	23.799
Co	1.000	+/-	42.129
Fe	6776.219	+/-	152.768
Mn	1.000	+/-	52.897
Cr	111.456	+/-	16.543
V	1.000	+/-	14.572
Ti	84.238	+/-	79.669
Ca	28698.766	+/-	398.488
K	1799.212	+/-	174.809
Al	17898.068	+/-	892.279
P	2554.856	+/-	108.885
Si	22211.084	+/-	543.263
Cl	2487.683	+/-	45.699
S	11678.191	+/-	160.794
Mg	4991.413	+/-	4958.227

Supervised By: _____

Certificate of Verification

XL3t-69288

Reading No 21
Mode Mining
Time 2017-01-24 14:01
Duration 121.14
Units ppm
Sigma Value 2
Sequence Final
Flags
INV NR Gm514a
OBJEKT TAFELGEMAELEN
MATERIAL HOLZ METALL FASSUNG
ANALYSESTELLE **P8** ENGEL OBEN STOLA INNEN
MESSAUFBAU STATIV
FILTER m30lo30hi30li30
User Login Raquet



	ppm	+/-	Error
Ce	-339.000	+/-	76.714
La	1.000	+/-	35.170
Ba	1.000	+/-	37.706
Sb	1.000	+/-	20.602
Sn	225.618	+/-	13.579
Cd	23.674	+/-	5.700
Ag	918.413	+/-	18.459
Bal	871252.625	+/-	833.472
Nb	21.903	+/-	10.843
Zr	1.000	+/-	38.715
Y	1.000	+/-	9.027
Sr	47.702	+/-	3.510
Rb	1.000	+/-	23.900
Th	1.000	+/-	559.500
Bi	1.000	+/-	503.951
Au	531.482	+/-	29.423
As	2828.796	+/-	98.595
Se	1.000	+/-	9.920
Pb	13757.612	+/-	181.721
Hg	1.000	+/-	8.215
Zn	47.845	+/-	18.057
Cu	18444.945	+/-	258.630
Ni	1.000	+/-	26.203
Co	1.000	+/-	51.177
Fe	10281.549	+/-	195.903
Mn	1.000	+/-	51.556
Cr	75.254	+/-	19.313
V	1.000	+/-	21.739
Ti	160.671	+/-	94.052
Ca	30189.416	+/-	401.151
K	2633.562	+/-	176.135
Al	13675.257	+/-	887.178
P	1241.504	+/-	96.331
Si	21696.949	+/-	577.519
Cl	3756.213	+/-	62.519
S	8189.047	+/-	124.137
Mg	1.000	+/-	5028.709

Supervised By: _____

Certificate of Verification

XL3t-69288

Reading No 22
Mode Mining
Time 2017-01-24 14:04
Duration 121.36
Units ppm
Sigma Value 2
Sequence Final
Flags
INV NR Gm514a
OBJEKT TAFELGEMAELEN
MATERIAL HOLZ METALL FASSUNG
ANALYSESTELLE **P9** ENGEL OBEN GEWAND INNEN
MESSAUFBAU STATIV
FILTER m30lo30hi30li30
User Login Raquet



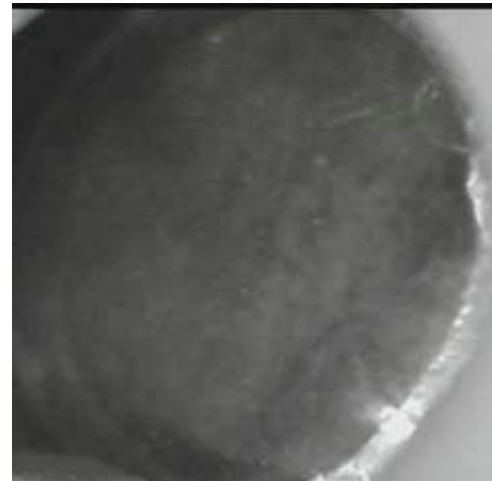
	ppm	+/-	Error
Ce	-339.000	+/-	65.819
La	1.000	+/-	30.086
Ba	1.000	+/-	32.440
Sb	12.903	+/-	11.942
Sn	178.240	+/-	11.452
Cd	21.384	+/-	4.971
Ag	856.400	+/-	15.909
Bal	902811.000	+/-	568.986
Nb	13.354	+/-	7.221
Zr	1.000	+/-	25.956
Y	1.000	+/-	5.834
Sr	53.153	+/-	2.934
Rb	1.000	+/-	11.857
Th	1.000	+/-	380.275
Bi	1.000	+/-	342.964
Au	1.000	+/-	10.678
As	2352.652	+/-	69.849
Se	1.000	+/-	7.324
Pb	8162.771	+/-	98.430
Hg	1.000	+/-	6.430
Zn	128.159	+/-	11.028
Cu	1349.932	+/-	37.671
Ni	1.000	+/-	22.250
Co	1.000	+/-	49.025
Fe	11808.602	+/-	203.069
Mn	1.000	+/-	59.038
Cr	174.853	+/-	17.120
V	1.000	+/-	24.398
Ti	130.740	+/-	88.604
Ca	26380.299	+/-	338.877
K	1841.588	+/-	176.653
Al	8892.976	+/-	652.123
P	1455.195	+/-	90.652
Si	21450.285	+/-	521.083
Cl	2931.140	+/-	48.581
S	8994.340	+/-	121.786
Mg	1.000	+/-	4318.916

Supervised By: _____

Certificate of Verification

XL3t-69288

Reading No 23
Mode Mining
Time 2017-01-24 14:08
Duration 121.34
Units ppm
Sigma Value 2
Sequence Final
Flags
INV NR Gm514a
OBJEKT TAFELGEMAELEN
MATERIAL HOLZ METALL FASSUNG
ANALYSESTELLE **P10** ENGEL OBEN FLUEGEL
MESSAUFBAU STATIV
FILTER m30lo30hi30li30
User Login Raquet



	ppm	+/-	Error
Ce	-339.000	+/-	64.311
La	1.000	+/-	29.612
Ba	1.000	+/-	31.768
Sb	1.000	+/-	14.822
Sn	79.669	+/-	8.885
Cd	18.744	+/-	4.780
Ag	467.544	+/-	11.144
Bal	897554.250	+/-	577.768
Nb	7.686	+/-	6.204
Zr	1.000	+/-	22.296
Y	1.000	+/-	4.956
Sr	44.811	+/-	2.641
Rb	11.141	+/-	10.148
Th	1.000	+/-	328.446
Bi	1.000	+/-	255.354
Au	281.868	+/-	18.558
As	1546.283	+/-	57.715
Se	1.000	+/-	6.493
Pb	6157.094	+/-	73.041
Hg	1.000	+/-	4.912
Zn	1260.776	+/-	31.604
Cu	15252.833	+/-	173.160
Ni	1.000	+/-	20.693
Co	1.000	+/-	36.405
Fe	6044.268	+/-	123.006
Mn	1.000	+/-	47.841
Cr	311.658	+/-	18.105
V	1.000	+/-	15.488
Ti	124.185	+/-	77.227
Ca	30260.146	+/-	330.315
K	1871.385	+/-	140.745
Al	10954.761	+/-	654.326
P	1169.844	+/-	75.596
Si	17919.412	+/-	435.546
Cl	2223.773	+/-	36.416
S	6437.834	+/-	83.014
Mg	1.000	+/-	4119.717

Supervised By: _____

Certificate of Verification

XL3t-69288

Reading No 24
Mode Mining
Time 2017-01-24 14:12
Duration 121.03
Units ppm
Sigma Value 2
Sequence Final
Flags
INV NR Gm514a
OBJEKT TAFELGEMAELEN
MATERIAL HOLZ METALL FASSUNG
ANALYSESTELLE **P10** ENGEL OBEN FLUEGEL
MESSAUFBAU STATIV
FILTER m30lo30hi30li30
User Login Raquet



	ppm	+/-	Error
Ce	-339.000	+/-	63.942
La	1.000	+/-	29.058
Ba	1.000	+/-	31.392
Sb	23.708	+/-	11.679
Sn	832.979	+/-	18.234
Cd	24.092	+/-	4.961
Ag	890.863	+/-	15.813
Bal	905291.063	+/-	558.893
Nb	12.529	+/-	7.009
Zr	1.000	+/-	25.168
Y	1.000	+/-	5.698
Sr	46.422	+/-	2.756
Rb	1.000	+/-	13.110
Th	1.000	+/-	368.947
Bi	1.000	+/-	318.828
Au	1.000	+/-	9.896
As	2114.539	+/-	67.065
Se	1.000	+/-	8.804
Pb	7833.354	+/-	93.904
Hg	1.000	+/-	5.518
Zn	182.625	+/-	12.611
Cu	1848.228	+/-	44.483
Ni	1.000	+/-	22.044
Co	1.000	+/-	44.509
Fe	9163.847	+/-	171.681
Mn	1.000	+/-	52.627
Cr	303.073	+/-	18.779
V	1.000	+/-	16.751
Ti	1.000	+/-	108.188
Ca	23965.135	+/-	364.093
K	1639.017	+/-	226.621
Al	12949.015	+/-	888.206
P	700.427	+/-	100.164
Si	19288.861	+/-	565.198
Cl	2963.867	+/-	54.831
S	9926.344	+/-	139.951
Mg	1.000	+/-	5416.343

Supervised By: _____