

## Certificate of Verification

XL3t-69288

Reading No 1  
Mode Mining  
Time 2014-10-27 10:37  
Duration 121.12  
Units ppm  
Sigma Value 2  
Sequence Final  
Flags  
INV NR GM 516 PAULUS  
OBJEKT TAFELGEMAELEN PAULUS  
MATERIAL HOLZ FASSUNG METALL  
ANALYSESTELLE P1 NIMBUS  
MESSAUFBAU STATIV ANLIEGEND  
FILTER m30lo30hi30li30  
User Login Raquet



	ppm	+/-	Error
Ce	< LOD	:	114.503
La	< LOD	:	52.400
Ba	< LOD	:	55.922
Sb	21.389	+/-	13.858
Sn	862.691	+/-	22.329
Cd	20.356	+/-	5.866
Ag	743.307	+/-	17.351
Bal	884110.688	+/-	689.348
Nb	36.138	+/-	9.139
Zr	< LOD	:	49.027
Y	< LOD	:	11.914
Sr	81.431	+/-	3.857
Rb	< LOD	:	23.134
Th	< LOD	:	700.487
Bi	< LOD	:	543.067
Au	848.806	+/-	30.716
As	748.852	+/-	78.820
Se	< LOD	:	13.932
Pb	12644.260	+/-	149.606
Hg	< LOD	:	10.578
Zn	65.097	+/-	10.810
Cu	585.924	+/-	26.487
Ni	< LOD	:	35.629
Co	< LOD	:	47.617
Fe	3531.034	+/-	107.115
Mn	< LOD	:	91.549
Cr	61.918	+/-	19.609
V	< LOD	:	36.985
Ti	203.768	+/-	90.086
Ca	48754.313	+/-	570.490
K	2863.534	+/-	211.169
Al	2574.895	+/-	651.901
P	8623.394	+/-	199.108
Si	18690.352	+/-	586.935
Cl	2906.678	+/-	56.681
S	10584.151	+/-	150.635
Mg	< LOD	:	10038.292

Supervised By: \_\_\_\_\_

## Certificate of Verification

XL3t-69288

Reading No 2  
Mode Mining  
Time 2014-10-27 10:40  
Duration 122.19  
Units ppm  
Sigma Value 2  
Sequence Final  
Flags  
INV NR GM 516 PAULUS  
OBJEKT TAFELGEMAELE PAULUS  
MATERIAL HOLZ FASSUNG METALL  
ANALYSESTELLE P2 KNAUF  
MESSAUFBAU STATIV ANLIEGEND  
FILTER m30lo30hi30li30  
User Login Raquet



	ppm	+/-	Error
Ce	< LOD	:	149.583
La	< LOD	:	68.548
Ba	< LOD	:	72.957
Sb	< LOD	:	24.383
Sn	562.144	+/-	22.375
Cd	17.184	+/-	7.042
Ag	681.206	+/-	20.038
Bal	849611.313	+/-	1233.300
Nb	90.717	+/-	22.207
Zr	< LOD	:	130.201
Y	< LOD	:	28.234
Sr	84.570	+/-	6.994
Rb	< LOD	:	54.040
Th	< LOD	:	1526.267
Bi	< LOD	:	1691.245
Au	< LOD	:	46.172
As	6741.720	+/-	199.876
Se	< LOD	:	27.587
Pb	35456.191	+/-	566.637
Hg	403.028	+/-	26.215
Zn	129.049	+/-	15.804
Cu	523.683	+/-	32.230
Ni	< LOD	:	49.886
Co	< LOD	:	53.412
Fe	1906.001	+/-	103.298
Mn	< LOD	:	103.572
Cr	< LOD	:	32.564
V	< LOD	:	34.916
Ti	< LOD	:	149.606
Ca	26908.607	+/-	495.344
K	1808.480	+/-	196.157
Al	4273.505	+/-	720.530
P	2431.582	+/-	144.561
Si	19640.564	+/-	615.678
Cl	3291.251	+/-	74.015
S	27179.979	+/-	488.622
Mg	18111.738	+/-	7546.583

Supervised By: \_\_\_\_\_

## Certificate of Verification

XL3t-69288

Reading No 3  
Mode Mining  
Time 2014-10-27 10:46  
Duration 121.98  
Units ppm  
Sigma Value 2  
Sequence Final  
Flags  
INV NR GM 516 URSULA  
OBJEKT TAFELGEMAELE URSULA  
MATERIAL HOLZ FASSUNG METALL  
ANALYSESTELLE P3 MUND  
MESSAUFBAU STATIV ANLIEGEND  
FILTER m30lo30hi30li30  
User Login Raquet



	ppm	+/-	Error
Ce	< LOD	:	196.922
La	< LOD	:	89.706
Ba	< LOD	:	95.938
Sb	< LOD	:	31.399
Sn	417.728	+/-	21.295
Cd	24.297	+/-	8.848
Ag	< LOD	:	8.239
Bal	835825.813	+/-	1540.104
Nb	129.212	+/-	32.153
Zr	< LOD	:	177.642
Y	< LOD	:	40.103
Sr	40.360	+/-	7.517
Rb	< LOD	:	78.860
Th	< LOD	:	2081.979
Bi	< LOD	:	2563.637
Au	< LOD	:	55.513
As	10271.807	+/-	285.527
Se	< LOD	:	44.687
Pb	52163.457	+/-	913.125
Hg	< LOD	:	41.496
Zn	150.588	+/-	16.737
Cu	370.939	+/-	30.893
Ni	< LOD	:	57.239
Co	< LOD	:	63.897
Fe	95.031	+/-	58.463
Mn	< LOD	:	158.186
Cr	< LOD	:	42.984
V	< LOD	:	33.942
Ti	< LOD	:	139.509
Ca	31709.361	+/-	629.367
K	1245.160	+/-	148.915
Al	1668.417	+/-	663.208
P	3662.440	+/-	172.968
Si	9561.569	+/-	444.017
Cl	2567.396	+/-	66.457
S	34624.164	+/-	694.210
Mg	15423.602	+/-	7732.480

Supervised By: \_\_\_\_\_

## Certificate of Verification

XL3t-69288

Reading No 4  
Mode Mining  
Time 2014-10-27 10:50  
Duration 120.25  
Units ppm  
Sigma Value 2  
Sequence Final  
Flags  
INV NR GM 516 URSULA  
OBJEKT TAFELGEMAELE URSULA  
MATERIAL HOLZ FASSUNG METALL  
ANALYSESTELLE P4 NIMBUS  
MESSAUFBAU STATIV ANLIEGEND  
FILTER m30lo30hi30li30  
User Login Raquet



	ppm	+/-	Error
Ce	< LOD	:	98.500
La	< LOD	:	45.384
Ba	< LOD	:	48.770
Sb	< LOD	:	23.993
Sn	66.047	+/-	7.751
Cd	16.498	+/-	4.957
Ag	13.062	+/-	3.482
Bal	801712.188	+/-	959.714
Nb	24.338	+/-	6.225
Zr	< LOD	:	54.831
Y	< LOD	:	7.907
Sr	118.721	+/-	3.748
Rb	< LOD	:	15.549
Th	< LOD	:	488.970
Bi	< LOD	:	568.738
Au	1582.246	+/-	35.997
As	757.727	+/-	55.331
Se	< LOD	:	14.760
Pb	7346.953	+/-	82.158
Hg	< LOD	:	7.967
Zn	67.819	+/-	10.596
Cu	738.397	+/-	26.177
Ni	< LOD	:	30.881
Co	< LOD	:	40.471
Fe	3072.353	+/-	89.013
Mn	< LOD	:	68.864
Cr	76.138	+/-	19.699
V	< LOD	:	36.430
Ti	301.130	+/-	98.542
Ca	106035.195	+/-	915.963
K	2339.980	+/-	151.179
Al	5729.693	+/-	932.085
P	24911.080	+/-	364.072
Si	27120.234	+/-	777.864
Cl	1346.240	+/-	40.886
S	16608.889	+/-	194.347
Mg	< LOD	:	10974.519

Supervised By: \_\_\_\_\_

## Certificate of Verification

XL3t-69288

Reading No 5  
Mode Mining  
Time 2014-10-27 10:55  
Duration 120.95  
Units ppm  
Sigma Value 2  
Sequence Final  
Flags  
INV NR GM 516 URSULA  
OBJEKT TAFELGEMAELE URSULA  
MATERIAL HOLZ FASSUNG METALL  
ANALYSESTELLE P5 RAHMEN  
MESSAUFBAU STATIV ANLIEGEND  
FILTER m30lo30hi30li30  
User Login Raquet



	ppm	+/-	Error
Ce	< LOD	:	106.318
La	< LOD	:	48.580
Ba	< LOD	:	52.320
Sb	< LOD	:	19.095
Sn	270.860	+/-	12.128
Cd	15.953	+/-	5.112
Ag	327.042	+/-	10.109
Bal	908904.813	+/-	562.946
Nb	21.500	+/-	8.481
Zr	< LOD	:	54.245
Y	< LOD	:	10.738
Sr	65.609	+/-	3.511
Rb	< LOD	:	23.807
Th	< LOD	:	662.026
Bi	< LOD	:	670.103
Au	455.136	+/-	25.839
As	2580.363	+/-	83.001
Se	< LOD	:	13.452
Pb	10324.668	+/-	131.056
Hg	< LOD	:	11.041
Zn	1439.691	+/-	37.262
Cu	15640.179	+/-	209.139
Ni	< LOD	:	34.554
Co	< LOD	:	45.998
Fe	3204.387	+/-	97.839
Mn	< LOD	:	71.532
Cr	< LOD	:	35.911
V	< LOD	:	27.881
Ti	140.086	+/-	75.343
Ca	24201.301	+/-	316.829
K	1598.405	+/-	136.435
Al	1516.211	+/-	442.632
P	4536.777	+/-	124.358
Si	10169.067	+/-	363.890
Cl	4090.109	+/-	61.043
S	10470.652	+/-	139.610
Mg	< LOD	:	7040.504

Supervised By: \_\_\_\_\_

## Certificate of Verification

XL3t-69288

Reading No 6  
Mode Mining  
Time 2014-10-27 11:00  
Duration 122.24  
Units ppm  
Sigma Value 2  
Sequence Final  
Flags  
INV NR GM 516 URSULA  
OBJEKT TAFELGEMAELE URSULA  
MATERIAL HOLZ FASSUNG METALL  
ANALYSESTELLE P6 RAHMEN  
MESSAUFBAU STATIV ANLIEGEND  
FILTER m30lo30hi30li30  
User Login Raquet



	ppm	+/-	Error
Ce	< LOD	:	130.600
La	< LOD	:	59.590
Ba	< LOD	:	63.621
Sb	< LOD	:	36.773
Sn	392.042	+/-	16.092
Cd	10.098	+/-	5.963
Ag	307.634	+/-	11.416
Bal	902759.875	+/-	648.181
Nb	35.922	+/-	11.786
Zr	< LOD	:	82.286
Y	< LOD	:	15.000
Sr	49.933	+/-	3.744
Rb	< LOD	:	31.397
Th	< LOD	:	890.453
Bi	< LOD	:	1017.472
Au	386.509	+/-	28.580
As	3687.212	+/-	113.452
Se	< LOD	:	15.826
Pb	16582.529	+/-	232.149
Hg	< LOD	:	14.732
Zn	410.833	+/-	21.393
Cu	5064.248	+/-	102.275
Ni	< LOD	:	39.422
Co	< LOD	:	63.305
Fe	5607.054	+/-	150.424
Mn	< LOD	:	80.586
Cr	25.281	+/-	16.232
V	< LOD	:	26.441
Ti	166.624	+/-	77.674
Ca	17919.375	+/-	296.817
K	1800.291	+/-	154.505
Al	2591.507	+/-	506.780
P	7636.303	+/-	177.220
Si	16448.082	+/-	490.863
Cl	5851.783	+/-	96.555
S	12255.710	+/-	194.160
Mg	< LOD	:	7905.212

Supervised By: \_\_\_\_\_

## Certificate of Verification

XL3t-69288

Reading No 7  
Mode Mining  
Time 2014-10-27 11:24  
Duration 122.20  
Units ppm  
Sigma Value 2  
Sequence Final  
Flags  
INV NR GM 516 PETRUS  
OBJEKT TAFELGEMAELENDE PETRUS  
MATERIAL HOLZ FASSUNG METALL  
ANALYSESTELLE P7 NIMBUS  
MESSAUFBAU STATIV ANLIEGEND  
FILTER m30lo30hi30li30  
User Login Raquet



	ppm	+/-	Error
Ce	< LOD	:	115.026
La	< LOD	:	52.460
Ba	< LOD	:	56.558
Sb	< LOD	:	24.745
Sn	693.453	+/-	20.082
Cd	17.791	+/-	5.816
Ag	517.929	+/-	14.464
Bal	856753.938	+/-	827.909
Nb	32.964	+/-	9.437
Zr	< LOD	:	66.537
Y	< LOD	:	12.058
Sr	70.435	+/-	3.642
Rb	< LOD	:	26.152
Th	< LOD	:	727.729
Bi	< LOD	:	760.494
Au	454.674	+/-	24.845
As	1725.545	+/-	83.900
Se	< LOD	:	14.208
Pb	13124.281	+/-	163.619
Hg	< LOD	:	10.740
Zn	49.258	+/-	9.359
Cu	385.241	+/-	22.365
Ni	< LOD	:	35.060
Co	< LOD	:	49.694
Fe	3821.047	+/-	113.040
Mn	< LOD	:	77.157
Cr	62.206	+/-	18.918
V	< LOD	:	32.429
Ti	289.924	+/-	89.782
Ca	57824.359	+/-	693.165
K	2049.233	+/-	191.951
Al	4195.614	+/-	807.951
P	11165.067	+/-	254.976
Si	26838.289	+/-	763.914
Cl	2952.343	+/-	62.000
S	16976.555	+/-	237.388
Mg	< LOD	:	10919.182

Supervised By: \_\_\_\_\_

## Certificate of Verification

XL3t-69288

Reading No 8  
Mode Mining  
Time 2014-10-27 11:28  
Duration 121.82  
Units ppm  
Sigma Value 2  
Sequence Final  
Flags  
INV NR GM 516 PETRUS  
OBJEKT TAFELGEMAELE PETRUS  
MATERIAL HOLZ FASSUNG METALL  
ANALYSESTELLE P8 SCHLUESSEL  
MESSAUFBAU STATIV ANLIEGEND  
FILTER m30lo30hi30li30  
User Login Raquet



	ppm	+/-	Error
Ce	< LOD	:	110.999
La	< LOD	:	50.910
Ba	< LOD	:	56.269
Sb	47.050	+/-	14.310
Sn	66.356	+/-	11.168
Cd	21.901	+/-	5.785
Ag	605.860	+/-	15.859
Bal	851667.938	+/-	779.192
Nb	25.486	+/-	6.750
Zr	< LOD	:	52.785
Y	< LOD	:	8.485
Sr	131.281	+/-	4.030
Rb	< LOD	:	20.123
Th	< LOD	:	530.223
Bi	< LOD	:	550.910
Au	< LOD	:	13.560
As	1824.840	+/-	64.193
Se	< LOD	:	16.028
Pb	8063.073	+/-	92.967
Hg	< LOD	:	7.911
Zn	57.112	+/-	8.885
Cu	1842.218	+/-	43.225
Ni	< LOD	:	33.309
Co	< LOD	:	47.005
Fe	4116.781	+/-	106.575
Mn	< LOD	:	71.781
Cr	< LOD	:	32.253
V	< LOD	:	40.437
Ti	323.555	+/-	105.161
Ca	79022.922	+/-	766.258
K	3316.396	+/-	229.905
Al	3848.095	+/-	768.890
P	1679.060	+/-	127.519
Si	26763.971	+/-	683.051
Cl	3660.196	+/-	62.162
S	12887.162	+/-	161.640
Mg	< LOD	:	16751.023

Supervised By: \_\_\_\_\_



## Certificate of Verification

XL3t-69288

Reading No 9  
Mode Mining  
Time 2014-10-27 11:32  
Duration 120.54  
Units ppm  
Sigma Value 2  
Sequence Final  
Flags  
INV NR GM 516 PETRUS  
OBJEKT TAFELGEMAELE PETRUS  
MATERIAL HOLZ FASSUNG METALL  
ANALYSESTELLE P9 STERN  
MESSAUFBAU STATIV ANLIEGEND  
FILTER m30lo30hi30li30  
User Login Raquet



	ppm	+/-	Error
Ce	< LOD	:	328.551
La	< LOD	:	150.609
Ba	198.066	+/-	110.223
Sb	194.699	+/-	40.682
Sn	315.308	+/-	35.983
Cd	< LOD	:	20.644
Ag	1429.441	+/-	53.670
Bal	790985.313	+/-	2872.269
Nb	199.896	+/-	63.582
Zr	< LOD	:	281.199
Y	< LOD	:	77.287
Sr	38.541	+/-	11.985
Rb	< LOD	:	155.878
Th	< LOD	:	3659.120
Bi	< LOD	:	3393.463
Au	371.180	+/-	78.405
As	15911.850	+/-	472.452
Se	< LOD	:	43.915
Pb	95216.180	+/-	1988.859
Hg	< LOD	:	52.068
Zn	212.634	+/-	23.688
Cu	1546.584	+/-	70.274
Ni	< LOD	:	110.425
Co	< LOD	:	63.712
Fe	392.261	+/-	88.671
Mn	< LOD	:	227.452
Cr	< LOD	:	45.966
V	< LOD	:	38.899
Ti	< LOD	:	183.782
Ca	13873.959	+/-	373.297
K	7437.453	+/-	390.281
Al	6492.984	+/-	1055.104
P	12959.480	+/-	362.609
Si	20523.145	+/-	764.892
Cl	9256.130	+/-	225.260
S	22302.654	+/-	509.183
Mg	< LOD	:	13777.283

Supervised By: \_\_\_\_\_

## Certificate of Verification

XL3t-69288

Reading No 10  
Mode Mining  
Time 2014-10-27 11:39  
Duration 121.74  
Units ppm  
Sigma Value 2  
Sequence Final  
Flags  
INV NR GM 516 PETRUS  
OBJEKT TAFELGEMAELENDE PETRUS  
MATERIAL HOLZ FASSUNG METALL  
ANALYSESTELLE P10 STERN  
MESSAUFBAU STATIV ANLIEGEND  
FILTER m30lo30hi30li30  
User Login Raquet



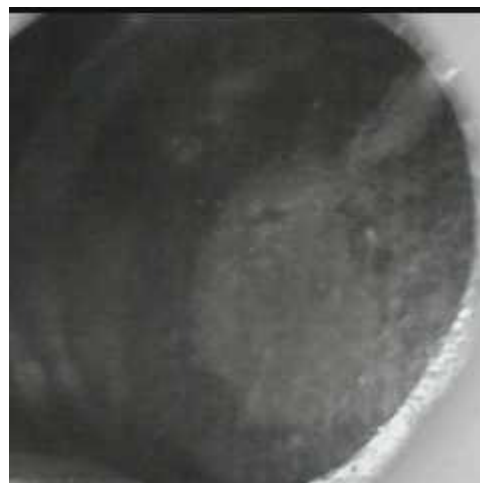
	ppm	+/-	Error
Ce	< LOD	:	240.640
La	< LOD	:	109.840
Ba	< LOD	:	118.580
Sb	< LOD	:	46.602
Sn	188.023	+/-	22.645
Cd	< LOD	:	16.212
Ag	821.076	+/-	29.328
Bal	842228.625	+/-	1643.618
Nb	136.643	+/-	40.492
Zr	< LOD	:	186.858
Y	< LOD	:	49.604
Sr	46.567	+/-	8.255
Rb	< LOD	:	99.329
Th	< LOD	:	2496.194
Bi	< LOD	:	2350.130
Au	245.023	+/-	54.935
As	12115.682	+/-	324.322
Se	< LOD	:	47.416
Pb	65808.445	+/-	1145.403
Hg	< LOD	:	35.909
Zn	158.014	+/-	17.387
Cu	1156.381	+/-	51.264
Ni	< LOD	:	94.105
Co	< LOD	:	50.427
Fe	335.520	+/-	69.995
Mn	142.709	+/-	80.336
Cr	< LOD	:	40.620
V	< LOD	:	30.484
Ti	< LOD	:	159.328
Ca	11435.612	+/-	291.011
K	6472.681	+/-	322.704
Al	4084.382	+/-	746.059
P	12381.974	+/-	307.125
Si	16139.630	+/-	592.748
Cl	6929.990	+/-	149.655
S	19090.088	+/-	384.364
Mg	< LOD	:	10199.960

Supervised By: \_\_\_\_\_

## Certificate of Verification

XL3t-69288

Reading No 11  
Mode Mining  
Time 2014-10-27 11:45  
Duration 121.53  
Units ppm  
Sigma Value 2  
Sequence Final  
Flags  
INV NR GM 516 PETRUS  
OBJEKT TAFELGEMAELE PETRUS  
MATERIAL HOLZ FASSUNG METALL  
ANALYSESTELLE P11 ROSETTE  
MESSAUFBAU STATIV ANLIEGEND  
FILTER m30lo30hi30li30  
User Login Raquet



	ppm	+/-	Error
Ce	< LOD	:	90.451
La	< LOD	:	41.208
Ba	< LOD	:	44.370
Sb	< LOD	:	16.561
Sn	14.731	+/-	6.838
Cd	16.133	+/-	4.455
Ag	253.913	+/-	8.101
Bal	858999.625	+/-	747.204
Nb	12.154	+/-	5.197
Zr	< LOD	:	35.643
Y	< LOD	:	6.209
Sr	57.566	+/-	3.404
Rb	< LOD	:	11.578
Th	< LOD	:	407.538
Bi	< LOD	:	422.807
Au	< LOD	:	24.426
As	1300.531	+/-	49.697
Se	< LOD	:	13.322
Pb	4508.873	+/-	55.940
Hg	866.986	+/-	17.614
Zn	93.157	+/-	12.442
Cu	1797.161	+/-	42.137
Ni	< LOD	:	33.050
Co	< LOD	:	115.052
Fe	33532.969	+/-	360.622
Mn	< LOD	:	73.107
Cr	68.913	+/-	20.983
V	< LOD	:	29.254
Ti	< LOD	:	235.125
Ca	43471.121	+/-	444.913
K	2685.586	+/-	201.097
Al	5675.095	+/-	646.993
P	2771.948	+/-	115.258
Si	27173.031	+/-	590.058
Cl	4888.890	+/-	61.156
S	11771.937	+/-	129.244
Mg	< LOD	:	8313.649

Supervised By: \_\_\_\_\_

## Certificate of Verification

XL3t-69288

Reading No 12  
Mode Mining  
Time 2014-10-27 11:49  
Duration 120.80  
Units ppm  
Sigma Value 2  
Sequence Final  
Flags  
INV NR GM 516 PETRUS  
OBJEKT TAFELGEMAELE PETRUS  
MATERIAL HOLZ FASSUNG METALL  
ANALYSESTELLE P12 RAHMEN  
MESSAUFBAU STATIV ANLIEGEND  
FILTER m30lo30hi30li30  
User Login Raquet



	ppm	+/-	Error
Ce	< LOD	:	192.683
La	< LOD	:	87.702
Ba	< LOD	:	93.328
Sb	< LOD	:	36.624
Sn	3008.069	+/-	61.789
Cd	18.311	+/-	8.960
Ag	18.557	+/-	5.993
Bal	841528.313	+/-	1385.490
Nb	96.392	+/-	28.131
Zr	< LOD	:	135.762
Y	< LOD	:	34.718
Sr	60.954	+/-	6.633
Rb	< LOD	:	68.723
Th	< LOD	:	1871.460
Bi	< LOD	:	1815.726
Au	< LOD	:	43.534
As	7847.459	+/-	235.137
Se	< LOD	:	22.175
Pb	44895.449	+/-	743.043
Hg	< LOD	:	25.962
Zn	99.168	+/-	12.626
Cu	339.438	+/-	28.700
Ni	< LOD	:	53.344
Co	< LOD	:	59.144
Fe	384.125	+/-	66.259
Mn	< LOD	:	169.249
Cr	< LOD	:	38.419
V	< LOD	:	25.159
Ti	< LOD	:	133.631
Ca	26849.582	+/-	527.138
K	2196.117	+/-	193.621
Al	5828.355	+/-	815.171
P	3522.263	+/-	178.123
Si	24550.574	+/-	738.965
Cl	3919.887	+/-	89.005
S	34814.914	+/-	642.220
Mg	< LOD	:	11527.117

Supervised By: \_\_\_\_\_

## Certificate of Verification

XL3t-69288

Reading No 13  
Mode Mining  
Time 2014-10-27 11:53  
Duration 121.49  
Units ppm  
Sigma Value 2  
Sequence Final  
Flags  
INV NR GM 516 BARBARA  
OBJEKT TAFELGEMAEDELDE BARBARA  
MATERIAL HOLZ FASSUNG METALL  
ANALYSESTELLE P13 KELCH  
MESSAUFBAU STATIV ANLIEGEND  
FILTER m30lo30hi30li30  
User Login Raquet



	ppm	+/-	Error
Ce	< LOD	:	106.422
La	< LOD	:	48.807
Ba	< LOD	:	53.266
Sb	< LOD	:	30.569
Sn	99.335	+/-	9.020
Cd	51.620	+/-	6.352
Ag	21.116	+/-	4.060
Bal	832877.438	+/-	878.493
Nb	20.472	+/-	6.593
Zr	< LOD	:	42.951
Y	< LOD	:	8.162
Sr	107.773	+/-	3.921
Rb	20.667	+/-	11.190
Th	< LOD	:	516.542
Bi	< LOD	:	503.607
Au	2324.226	+/-	47.312
As	2026.408	+/-	62.610
Se	< LOD	:	16.124
Pb	7181.519	+/-	83.770
Hg	172.005	+/-	10.992
Zn	61.561	+/-	12.157
Cu	583.347	+/-	24.549
Ni	< LOD	:	32.276
Co	< LOD	:	46.900
Fe	3968.547	+/-	104.917
Mn	< LOD	:	70.755
Cr	79.174	+/-	19.102
V	< LOD	:	38.098
Ti	327.918	+/-	92.813
Ca	62222.543	+/-	616.354
K	2224.061	+/-	139.745
Al	4817.264	+/-	767.718
P	36294.309	+/-	442.863
Si	23649.664	+/-	683.376
Cl	1552.764	+/-	39.895
S	19316.342	+/-	217.809
Mg	< LOD	:	10128.361

Supervised By: \_\_\_\_\_

## Certificate of Verification

XL3t-69288

Reading No 14  
Mode Mining  
Time 2014-10-27 11:59  
Duration 120.61  
Units ppm  
Sigma Value 2  
Sequence Final  
Flags  
INV NR GM 516 BARBARA  
OBJEKT TAFELGEMAELE BARBARA  
MATERIAL HOLZ FASSUNG METALL  
ANALYSESTELLE P14 ROSETTE  
MESSAUFBAU STATIV ANLIEGEND  
FILTER m30lo30hi30li30  
User Login Raquet



	ppm	+/-	Error
Ce	< LOD	:	128.638
La	< LOD	:	58.423
Ba	< LOD	:	62.988
Sb	< LOD	:	21.409
Sn	< LOD	:	13.313
Cd	16.038	+/-	5.994
Ag	226.842	+/-	9.720
Bal	881223.500	+/-	867.287
Nb	< LOD	:	12.579
Zr	< LOD	:	39.212
Y	< LOD	:	9.654
Sr	< LOD	:	13.151
Rb	< LOD	:	18.057
Th	< LOD	:	566.484
Bi	< LOD	:	470.176
Au	206.214	+/-	73.117
As	1642.629	+/-	65.639
Se	< LOD	:	14.185
Pb	4201.413	+/-	71.218
Hg	12146.462	+/-	146.692
Zn	1026.685	+/-	47.539
Cu	4885.722	+/-	94.836
Ni	< LOD	:	50.405
Co	< LOD	:	47.335
Fe	606.963	+/-	67.241
Mn	< LOD	:	118.431
Cr	< LOD	:	33.594
V	< LOD	:	34.544
Ti	< LOD	:	133.217
Ca	24278.850	+/-	340.610
K	1704.990	+/-	160.996
Al	1505.657	+/-	591.900
P	18898.410	+/-	301.080
Si	7502.900	+/-	420.497
Cl	5097.282	+/-	75.599
S	34806.887	+/-	386.095
Mg	< LOD	:	9327.927

Supervised By: \_\_\_\_\_

## Certificate of Verification

XL3t-69288

Reading No 15  
Mode Mining  
Time 2014-10-27 12:03  
Duration 120.03  
Units ppm  
Sigma Value 2  
Sequence Final  
Flags  
INV NR GM 516 BARBARA  
OBJEKT TAFELGEMAELE BARBARA  
MATERIAL HOLZ FASSUNG METALL  
ANALYSESTELLE P15 ROSETTE  
MESSAUFBAU STATIV ANLIEGEND  
FILTER m30lo30hi30li30  
User Login Raquet



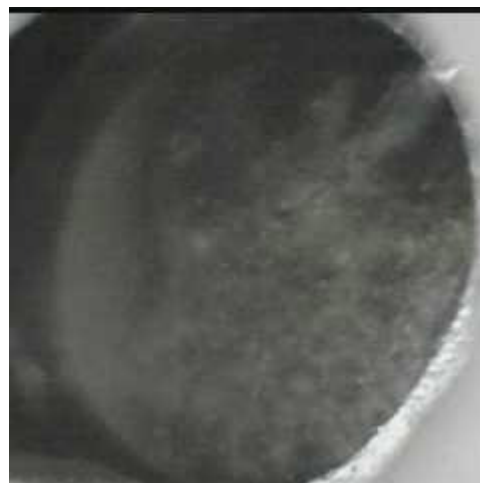
	ppm	+/-	Error
Ce	< LOD	:	120.562
La	< LOD	:	55.129
Ba	< LOD	:	58.871
Sb	< LOD	:	23.199
Sn	< LOD	:	12.533
Cd	15.937	+/-	5.685
Ag	431.626	+/-	12.575
Bal	880189.188	+/-	832.041
Nb	< LOD	:	8.923
Zr	< LOD	:	35.113
Y	< LOD	:	8.480
Sr	< LOD	:	11.587
Rb	< LOD	:	15.681
Th	< LOD	:	500.875
Bi	< LOD	:	439.392
Au	< LOD	:	95.025
As	1608.100	+/-	60.197
Se	< LOD	:	12.352
Pb	3842.382	+/-	63.056
Hg	10992.329	+/-	126.912
Zn	576.377	+/-	38.703
Cu	635.894	+/-	31.863
Ni	< LOD	:	45.986
Co	< LOD	:	43.491
Fe	958.982	+/-	73.992
Mn	< LOD	:	128.787
Cr	< LOD	:	27.053
V	< LOD	:	29.394
Ti	< LOD	:	113.461
Ca	33409.621	+/-	410.046
K	1859.087	+/-	173.913
Al	1235.786	+/-	584.458
P	17883.711	+/-	287.286
Si	8004.240	+/-	427.341
Cl	4791.484	+/-	70.820
S	33554.680	+/-	358.245
Mg	< LOD	:	9743.825

Supervised By: \_\_\_\_\_

## Certificate of Verification

XL3t-69288

Reading No 16  
Mode Mining  
Time 2014-10-27 12:08  
Duration 120.08  
Units ppm  
Sigma Value 2  
Sequence Final  
Flags  
INV NR GM 516 BARBARA  
OBJEKT TAFELGEMAELEN BARBARA  
MATERIAL HOLZ FASSUNG METALL  
ANALYSESTELLE P16 STERN  
MESSAUFBAU STATIV ANLIEGEND  
FILTER m30lo30hi30li30  
User Login Raquet



	ppm	+/-	Error
Ce	< LOD	:	140.159
La	< LOD	:	64.195
Ba	136.382	+/-	49.257
Sb	146.733	+/-	19.022
Sn	34.021	+/-	9.286
Cd	18.557	+/-	6.603
Ag	13.267	+/-	4.533
Bal	869401.063	+/-	957.926
Nb	22.455	+/-	14.379
Zr	< LOD	:	87.704
Y	< LOD	:	18.915
Sr	78.991	+/-	5.118
Rb	< LOD	:	34.817
Th	< LOD	:	1106.104
Bi	< LOD	:	1107.627
Au	< LOD	:	35.076
As	3691.688	+/-	133.729
Se	< LOD	:	21.843
Pb	16962.307	+/-	257.235
Hg	< LOD	:	16.894
Zn	1317.572	+/-	47.449
Cu	59572.281	+/-	747.529
Ni	< LOD	:	43.637
Co	< LOD	:	73.491
Fe	8032.411	+/-	167.570
Mn	< LOD	:	159.393
Cr	< LOD	:	37.572
V	< LOD	:	129.733
Ti	< LOD	:	532.294
Ca	4077.225	+/-	122.987
K	1306.150	+/-	136.414
Al	1298.037	+/-	513.368
P	1865.827	+/-	107.948
Si	6648.603	+/-	309.715
Cl	5542.270	+/-	83.564
S	19834.123	+/-	265.230
Mg	< LOD	:	8918.132

Supervised By: \_\_\_\_\_