

mRFA -Ergebnisse

XL3t-69288

Reading No 1
Mode Mining
Time 2017-05-09 10:10
Duration 120.75
Units ppm
Sigma Value 2
Sequence Final
Flags 3mm
INV NR **Gm143**
OBJEKT TAFELGEMAELENDE
MATERIAL HOLZ METALL FASSUNG
ANALYSESTELLE P15 NIMBUS
MESSAUFBAU STATIV ANLIEGEND
FILTER m30lo30hi30li30
User Login Raquet



	ppm	+/-	Error
Ce	1.000	+/-	216.377
La	1.000	+/-	182.533
Ba	209.650	+/-	188.554
Sb	1.000	+/-	72.990
Sn	1046.397	+/-	87.749
Cd	1.000	+/-	22.538
Ag	38.982	+/-	18.402
Bal	856438.625	+/-	2002.160
Nb	89.158	+/-	47.981
Zr	1.000	+/-	150.310
Y	1.000	+/-	40.046
Sr	108.797	+/-	12.388
Rb	1.000	+/-	112.291
Th	1.000	+/-	1950.663
Bi	1.000	+/-	1738.433
Au	4361.403	+/-	165.055
As	10984.819	+/-	373.786
Se	41.187	+/-	29.419
Pb	56402.316	+/-	1289.231
Hg	1.000	+/-	32.781
Zn	205.275	+/-	31.308
Cu	564.044	+/-	50.274
Ni	1.000	+/-	49.313
Co	1.000	+/-	104.010
Fe	7075.390	+/-	303.154
Mn	1.000	+/-	181.135
Cr	101.159	+/-	39.033
V	1.000	+/-	46.291
Ti	293.641	+/-	158.564
Ca	3224.515	+/-	180.903
K	2032.804	+/-	217.466
Al	2538.687	+/-	852.992
P	22442.895	+/-	628.161
Si	10966.304	+/-	733.481
Cl	3301.403	+/-	117.614
S	17532.533	+/-	452.136
Mg	1.000	+/-	8228.944

mRFA -Ergebnisse

XL3t-69288

Reading No 2
Mode Mining
Time 2017-05-09 10:15
Duration 120.23
Units ppm
Sigma Value 2
Sequence Final
Flags
INV NR **Gm143**
OBJEKT TAFELGEMAELEN
MATERIAL HOLZ METALL FASSUNG
ANALYSESTELLE P16 PRESSBROKAT
MESSAUFBAU STATIV ANLIEGEND
FILTER m30lo30hi30li30
User Login Raquet

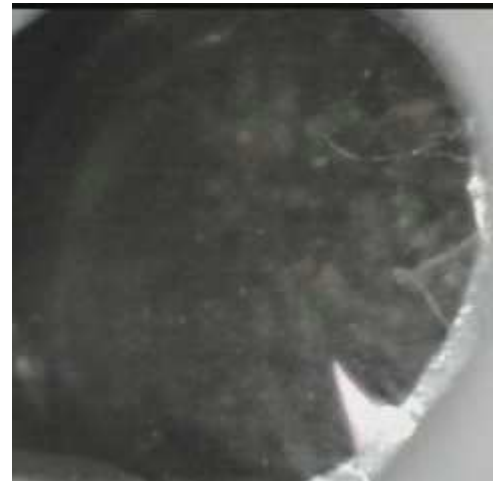


	ppm	+/-	Error
Ce	-339.000	+/-	172.873
La	1.000	+/-	97.343
Ba	1.000	+/-	83.599
Sb	1.000	+/-	26.336
Sn	11531.527	+/-	201.127
Cd	65.524	+/-	13.612
Ag	308.517	+/-	15.913
Bal	824021.000	+/-	1719.594
Nb	73.020	+/-	29.479
Zr	1.000	+/-	96.553
Y	1.000	+/-	24.979
Sr	91.504	+/-	8.063
Rb	1.000	+/-	47.903
Th	1.000	+/-	1349.067
Bi	1.000	+/-	1433.286
Au	359.128	+/-	45.506
As	3559.669	+/-	217.044
Se	1.000	+/-	17.420
Pb	42778.477	+/-	777.536
Hg	1.000	+/-	19.164
Zn	88.822	+/-	23.415
Cu	12383.757	+/-	278.100
Ni	1.000	+/-	44.219
Co	1.000	+/-	41.825
Fe	1652.658	+/-	109.485
Mn	1.000	+/-	85.045
Cr	1.000	+/-	38.518
V	1.000	+/-	20.451
Ti	1.000	+/-	106.262
Ca	62038.313	+/-	1081.671
K	8393.907	+/-	308.720
Al	5559.628	+/-	834.988
P	564.418	+/-	104.447
Si	13111.857	+/-	523.221
Cl	2408.122	+/-	62.098
S	11010.108	+/-	224.295
Mg	1.000	+/-	10887.760

mRFA -Ergebnisse

XL3t-69288

Reading No 3
Mode Mining
Time 2017-05-09 10:19
Duration 120.05
Units ppm
Sigma Value 2
Sequence Final
Flags
INV NR **Gm143**
OBJEKT TAFELGEMAELEN
MATERIAL HOLZ METALL FASSUNG
ANALYSESTELLE P17 PRESSBROKAT
MESSAUFBAU STATIV ANLIEGEND
FILTER m30lo30hi30li30
User Login Raquet



	ppm	+/-	Error
Ce	-339.000	+/-	132.380
La	1.000	+/-	60.513
Ba	1.000	+/-	64.372
Sb	1.000	+/-	20.212
Sn	10818.667	+/-	156.082
Cd	86.083	+/-	11.583
Ag	528.819	+/-	17.529
Bal	873512.563	+/-	1054.764
Nb	31.255	+/-	17.537
Zr	1.000	+/-	65.753
Y	1.000	+/-	15.231
Sr	107.876	+/-	6.311
Rb	1.000	+/-	28.430
Th	1.000	+/-	862.639
Bi	1.000	+/-	902.182
Au	331.993	+/-	33.860
As	2423.271	+/-	143.916
Se	1.000	+/-	13.536
Pb	23112.047	+/-	376.437
Hg	1.000	+/-	13.099
Zn	90.739	+/-	17.473
Cu	5362.945	+/-	128.602
Ni	1.000	+/-	38.513
Co	1.000	+/-	34.755
Fe	1346.213	+/-	91.670
Mn	1.000	+/-	72.745
Cr	1.000	+/-	29.836
V	1.000	+/-	15.702
Ti	1.000	+/-	83.199
Ca	45250.660	+/-	755.300
K	6124.445	+/-	251.117
Al	2496.980	+/-	659.586
P	1009.559	+/-	114.345
Si	10419.073	+/-	457.215
Cl	2952.296	+/-	67.416
S	13994.465	+/-	256.978
Mg	1.000	+/-	10955.037

mRFA -Ergebnisse

XL3t-69288

Reading No 4
Mode Mining
Time 2017-05-09 10:22
Duration 120.43
Units ppm
Sigma Value 2
Sequence Final
Flags
INV NR **Gm143**
OBJEKT TAFELGEMAELENDE
MATERIAL HOLZ METALL FASSUNG
ANALYSESTELLE P18 PARIERSTANGE
MESSAUFBAU STATIV ANLIEGEND
FILTER m30lo30hi30li30
User Login Raquet



	ppm	+/-	Error
Ce	-339.000	+/-	88.120
La	1.000	+/-	40.474
Ba	1.000	+/-	43.460
Sb	1.000	+/-	14.708
Sn	1.000	+/-	9.875
Cd	16.677	+/-	6.263
Ag	597.997	+/-	15.903
Bal	885013.125	+/-	692.089
Nb	17.524	+/-	8.867
Zr	1.000	+/-	31.680
Y	1.000	+/-	7.432
Sr	247.964	+/-	6.268
Rb	1.000	+/-	16.279
Th	1.000	+/-	462.886
Bi	1.000	+/-	468.633
Au	1.000	+/-	12.117
As	3356.014	+/-	89.934
Se	9.797	+/-	8.614
Pb	11320.725	+/-	143.904
Hg	1.000	+/-	6.656
Zn	50.562	+/-	8.135
Cu	527.055	+/-	25.771
Ni	1.000	+/-	25.825
Co	1.000	+/-	22.968
Fe	970.445	+/-	62.766
Mn	1.000	+/-	56.276
Cr	25.596	+/-	18.885
V	1.000	+/-	20.956
Ti	1.000	+/-	78.027
Ca	58551.707	+/-	692.873
K	2600.215	+/-	188.762
Al	1620.205	+/-	657.486
P	1339.788	+/-	132.352
Si	9231.392	+/-	440.710
Cl	4669.388	+/-	78.701
S	19833.865	+/-	262.607
Mg	1.000	+/-	8144.421

mRFA -Ergebnisse

XL3t-69288

Reading No 5
Mode Mining
Time 2017-05-09 10:27
Duration 121.66
Units ppm
Sigma Value 2
Sequence Final
Flags
INV NR **Gm143**
OBJEKT TAFELGEMAELEN
MATERIAL HOLZ METALL FASSUNG
ANALYSESTELLE P19 MANTEL DECIUS PRESSBROKAT
MESSAUFBAU STATIV ANLIEGEND
FILTER m30lo30hi30li30
User Login Raquet



	ppm	+/-	Error
Ce	668.878	+/-	370.776
La	518.948	+/-	169.001
Ba	321.986	+/-	175.909
Sb	1.000	+/-	53.532
Sn	51795.215	+/-	1113.574
Cd	152.901	+/-	29.684
Ag	1422.408	+/-	50.894
Bal	760766.625	+/-	3436.406
Nb	56.689	+/-	46.517
Zr	1.000	+/-	148.579
Y	1.000	+/-	40.102
Sr	42.519	+/-	11.004
Rb	1.000	+/-	76.268
Th	1.000	+/-	2026.122
Bi	1.000	+/-	1574.101
Au	1907.359	+/-	93.333
As	1.000	+/-	292.098
Se	1.000	+/-	24.915
Pb	59167.324	+/-	1234.358
Hg	260.219	+/-	28.430
Zn	121.290	+/-	34.834
Cu	12944.919	+/-	331.696
Ni	1.000	+/-	73.086
Co	1.000	+/-	51.886
Fe	634.998	+/-	109.805
Mn	1.000	+/-	126.527
Cr	101.099	+/-	35.436
V	1.000	+/-	35.556
Ti	1.000	+/-	180.481
Ca	46155.762	+/-	1043.498
K	5715.619	+/-	488.189
Al	2368.241	+/-	1139.348
P	6415.797	+/-	240.257
Si	10461.724	+/-	583.489
Cl	5341.505	+/-	136.485
S	14203.009	+/-	324.963
Mg	18115.096	+/-	13093.239

mRFA -Ergebnisse

XL3t-69288

Reading No 6
Mode Mining
Time 2017-05-09 10:32
Duration 121.33
Units ppm
Sigma Value 2
Sequence Final
Flags
INV NR **Gm143**
OBJEKT TAFELGEMAELEN
MATERIAL HOLZ METALL FASSUNG
ANALYSESTELLE P200MANTEL DECIUS KNOPF
MESSAUFBAU STATIV ANLIEGEND
FILTER m30lo30hi30li30
User Login Raquet



	ppm	+/-	Error
Ce	-339.000	+/-	69.315
La	1.000	+/-	31.660
Ba	1.000	+/-	34.178
Sb	1.000	+/-	15.874
Sn	1.000	+/-	8.527
Cd	15.290	+/-	5.070
Ag	196.362	+/-	8.062
Bal	861888.563	+/-	699.242
Nb	14.689	+/-	5.684
Zr	1.000	+/-	22.554
Y	1.000	+/-	4.513
Sr	113.769	+/-	3.569
Rb	1.000	+/-	13.562
Th	1.000	+/-	300.823
Bi	1.000	+/-	292.873
Au	236.192	+/-	16.822
As	1821.785	+/-	55.150
Se	1.000	+/-	6.004
Pb	5815.683	+/-	66.850
Hg	1.000	+/-	4.347
Zn	24.093	+/-	6.790
Cu	159.765	+/-	15.122
Ni	1.000	+/-	20.198
Co	1.000	+/-	14.717
Fe	88.866	+/-	34.131
Mn	1.000	+/-	46.802
Cr	20.893	+/-	15.461
V	1.000	+/-	16.206
Ti	1.000	+/-	61.526
Ca	104186.938	+/-	858.708
K	491.959	+/-	122.074
Al	1262.546	+/-	665.447
P	3585.537	+/-	154.899
Si	4755.956	+/-	370.317
Cl	1846.277	+/-	44.056
S	13474.814	+/-	161.406
Mg	1.000	+/-	6961.214

mRFA -Ergebnisse

XL3t-69288

Reading No 7
Mode Mining
Time 2017-05-09 10:38
Duration 120.56
Units ppm
Sigma Value 2
Sequence Final
Flags
INV NR **Gm143**
OBJEKT TAFELGEMAELENDE
MATERIAL HOLZ METALL FASSUNG
ANALYSESTELLE P21 MANTEL DECIUS Krone
MESSAUFBAU STATIV ANLIEGEND
FILTER m30lo30hi30li30
User Login Raquet



	ppm	+/-	Error
Ce	-339.000	+/-	78.742
La	1.000	+/-	36.281
Ba	1.000	+/-	39.596
Sb	15.607	+/-	14.332
Sn	1.000	+/-	10.437
Cd	9.049	+/-	5.511
Ag	177.108	+/-	8.364
Bal	882433.375	+/-	636.617
Nb	11.470	+/-	6.481
Zr	1.000	+/-	23.280
Y	1.000	+/-	5.299
Sr	173.266	+/-	4.553
Rb	1.000	+/-	13.827
Th	1.000	+/-	343.387
Bi	1.000	+/-	323.245
Au	64.281	+/-	14.345
As	2224.386	+/-	63.886
Se	1.000	+/-	6.533
Pb	7375.564	+/-	85.340
Hg	1.000	+/-	5.048
Zn	23.468	+/-	7.337
Cu	1136.891	+/-	33.202
Ni	1.000	+/-	21.553
Co	1.000	+/-	17.724
Fe	424.546	+/-	44.054
Mn	1.000	+/-	45.816
Cr	1.000	+/-	22.553
V	1.000	+/-	16.349
Ti	1.000	+/-	67.152
Ca	76167.023	+/-	717.527
K	1504.834	+/-	126.319
Al	1.000	+/-	733.716
P	1300.610	+/-	116.523
Si	4350.720	+/-	333.358
Cl	2096.090	+/-	46.017
S	11407.044	+/-	148.573
Mg	9104.669	+/-	7084.909