

mRFA -Ergebnisse

XL3t-69288

Reading No 1  
Mode Mining  
Time 2017-10-16 14:24  
Duration 121.54  
Units ppm  
Sigma Value 2  
Sequence Final  
Flags  
INV NR Gm154  
OBJEKT TAFELGEMAELEN  
MATERIAL HOLZ METALL FASSUNG  
ANALYSESTELLE P1 GOLDGRUND  
MESSAUFBAU STATIV  
FILTER m30lo30hi30li30  
User Login Raquet



	ppm	+/-	Error
Ce	-339.000	+/-	73.650
La	1.000	+/-	34.068
Ba	1.000	+/-	36.618
Sb	29.707	+/-	13.685
Sn	8.692	+/-	7.014
Cd	10.414	+/-	5.214
Ag	10.421	+/-	3.628
Bal	800014.125	+/-	943.263
Nb	1.000	+/-	1.446
Zr	1.000	+/-	5.027
Y	1.000	+/-	1.000
Sr	258.878	+/-	4.946
Rb	10.273	+/-	3.412
Th	1.000	+/-	74.945
Bi	1.000	+/-	58.179
Au	1639.151	+/-	33.166
As	29.425	+/-	7.634
Se	1.000	+/-	3.937
Pb	88.355	+/-	6.188
Hg	1.000	+/-	3.182
Zn	71.569	+/-	10.350
Cu	20.348	+/-	11.115
Ni	1.000	+/-	20.951
Co	1.000	+/-	39.320
Fe	8326.916	+/-	136.121
Mn	1.000	+/-	51.016
Cr	75.205	+/-	20.451
V	1.000	+/-	37.409
Ti	1376.987	+/-	137.318
Ca	131026.195	+/-	746.888
K	2258.560	+/-	144.923
Al	12056.360	+/-	1109.769
P	18828.916	+/-	274.369
Si	14611.531	+/-	590.231
Cl	2416.034	+/-	47.480
S	6831.932	+/-	95.687
Mg	1.000	+/-	7886.185

mRFA -Ergebnisse

XL3t-69288

Reading No 2  
Mode Mining  
Time 2017-10-16 14:28  
Duration 120.68  
Units ppm  
Sigma Value 2  
Sequence Final  
Flags  
INV NR Gm154  
OBJEKT TAFELGEMAELENDE  
MATERIAL HOLZ METALL FASSUNG  
ANALYSESTELLE P2 MUENZEN  
MESSAUFBAU STATIV  
FILTER m30lo30hi30li30  
User Login Raquet



	ppm	+/-	Error
Ce	-339.000	+/-	81.455
La	1.000	+/-	37.704
Ba	1.000	+/-	40.471
Sb	38.912	+/-	15.232
Sn	1.000	+/-	9.281
Cd	13.721	+/-	5.873
Ag	660.864	+/-	15.882
Bal	872277.438	+/-	660.340
Nb	1.000	+/-	2.482
Zr	1.000	+/-	9.691
Y	1.000	+/-	2.021
Sr	240.147	+/-	4.987
Rb	1.000	+/-	5.822
Th	1.000	+/-	145.086
Bi	1.000	+/-	123.848
Au	12.552	+/-	7.632
As	472.548	+/-	25.388
Se	1.000	+/-	3.109
Pb	1167.792	+/-	21.798
Hg	1.000	+/-	2.643
Zn	40.283	+/-	12.346
Cu	9791.417	+/-	106.581
Ni	1.000	+/-	21.812
Co	1.000	+/-	37.976
Fe	7231.377	+/-	129.453
Mn	1.000	+/-	49.200
Cr	1.000	+/-	32.032
V	29.554	+/-	20.692
Ti	841.625	+/-	119.566
Ca	86540.070	+/-	604.538
K	2470.779	+/-	181.764
Al	1315.348	+/-	609.884
P	317.249	+/-	85.233
Si	7589.969	+/-	378.667
Cl	4553.455	+/-	59.786
S	4394.893	+/-	71.706
Mg	1.000	+/-	6683.611

mRFA -Ergebnisse

XL3t-69288

Reading No 3  
Mode Mining  
Time 2017-10-16 14:32  
Duration 120.29  
Units ppm  
Sigma Value 2  
Sequence Final  
Flags  
INV NR Gm154  
OBJEKT TAFELGEMAELEN  
MATERIAL HOLZ METALL FASSUNG  
ANALYSESTELLE P3 SCHWARZZEICHNUNG  
MESSAUFBAU STATIV  
FILTER m30lo30hi30li30  
User Login Raquet



	ppm	+/-	Error
Ce	-339.000	+/-	72.838
La	1.000	+/-	33.403
Ba	1.000	+/-	36.152
Sb	56.749	+/-	13.830
Sn	1.000	+/-	7.495
Cd	13.566	+/-	5.210
Ag	433.649	+/-	11.359
Bal	846316.625	+/-	765.761
Nb	1.000	+/-	3.088
Zr	1.000	+/-	12.787
Y	1.000	+/-	2.645
Sr	298.495	+/-	5.553
Rb	1.000	+/-	7.126
Th	1.000	+/-	190.862
Bi	1.000	+/-	178.272
Au	1.000	+/-	6.358
As	731.813	+/-	33.303
Se	1.000	+/-	3.898
Pb	2200.349	+/-	31.386
Hg	1.000	+/-	2.685
Zn	49.707	+/-	7.439
Cu	124.249	+/-	14.187
Ni	1.000	+/-	21.826
Co	1.000	+/-	46.667
Fe	11913.476	+/-	174.957
Mn	1.000	+/-	54.891
Cr	59.800	+/-	21.988
V	40.831	+/-	25.399
Ti	1566.405	+/-	151.369
Ca	97870.805	+/-	700.815
K	3462.028	+/-	191.489
Al	4434.040	+/-	808.398
P	562.965	+/-	109.275
Si	12931.215	+/-	508.853
Cl	8014.795	+/-	89.182
S	8918.506	+/-	114.802
Mg	1.000	+/-	9617.530

mRFA -Ergebnisse

XL3t-69288

Reading No 4  
Mode Mining  
Time 2017-10-16 14:36  
Duration 121.38  
Units ppm  
Sigma Value 2  
Sequence Final  
Flags  
INV NR Gm154  
OBJEKT TAFELGEMAELEN  
MATERIAL HOLZ METALL FASSUNG  
ANALYSESTELLE P4 TIARA  
MESSAUFBAU STATIV  
FILTER m30lo30hi30li30  
User Login Raquet



	ppm	+/-	Error
Ce	-339.000	+/-	77.667
La	1.000	+/-	35.583
Ba	1.000	+/-	38.400
Sb	52.332	+/-	14.671
Sn	1.000	+/-	10.863
Cd	17.641	+/-	5.641
Ag	11.415	+/-	3.827
Bal	852961.563	+/-	738.541
Nb	1.000	+/-	2.576
Zr	1.000	+/-	10.411
Y	1.000	+/-	2.094
Sr	267.389	+/-	5.289
Rb	22.287	+/-	5.890
Th	1.000	+/-	167.827
Bi	1.000	+/-	120.705
Au	3226.544	+/-	50.056
As	374.886	+/-	24.264
Se	1.000	+/-	6.199
Pb	1162.763	+/-	21.579
Hg	1.000	+/-	4.502
Zn	111.007	+/-	13.216
Cu	117.614	+/-	14.309
Ni	1.000	+/-	22.170
Co	1.000	+/-	45.868
Fe	10895.752	+/-	163.067
Mn	1.000	+/-	53.926
Cr	104.858	+/-	21.592
V	40.813	+/-	22.519
Ti	1298.395	+/-	134.934
Ca	88367.594	+/-	619.837
K	2808.204	+/-	151.700
Al	3660.747	+/-	722.599
P	18141.559	+/-	258.068
Si	6941.260	+/-	438.613
Cl	1631.619	+/-	39.455
S	7783.648	+/-	99.442
Mg	1.000	+/-	6857.367

mRFA -Ergebnisse

XL3t-69288

Reading No 5  
Mode Mining  
Time 2017-10-16 14:40  
Duration 120.63  
Units ppm  
Sigma Value 2  
Sequence Final  
Flags  
INV NR Gm154  
OBJEKT TAFELGEMAELENDE  
MATERIAL HOLZ METALL FASSUNG  
ANALYSESTELLE P5 NIMBUS  
MESSAUFBAU STATIV  
FILTER m30lo30hi30li30  
User Login Raquet



	ppm	+/-	Error
Ce	-339.000	+/-	75.357
La	1.000	+/-	34.715
Ba	1.000	+/-	37.389
Sb	27.113	+/-	13.908
Sn	1.000	+/-	9.138
Cd	12.235	+/-	5.360
Ag	10.686	+/-	3.711
Bal	770058.688	+/-	1080.910
Nb	1.000	+/-	1.688
Zr	1.000	+/-	6.238
Y	1.000	+/-	1.179
Sr	262.735	+/-	5.082
Rb	15.527	+/-	4.306
Th	1.000	+/-	98.746
Bi	1.000	+/-	72.573
Au	2776.204	+/-	44.628
As	45.274	+/-	10.508
Se	1.000	+/-	5.225
Pb	200.563	+/-	8.874
Hg	1.000	+/-	3.685
Zn	87.275	+/-	12.094
Cu	47.850	+/-	12.070
Ni	1.000	+/-	20.985
Co	1.000	+/-	35.952
Fe	6750.910	+/-	123.910
Mn	1.000	+/-	50.843
Cr	75.427	+/-	21.952
V	1.000	+/-	30.596
Ti	1129.577	+/-	131.818
Ca	141043.563	+/-	811.922
K	1819.690	+/-	145.046
Al	18443.898	+/-	1375.394
P	29167.105	+/-	348.957
Si	17091.375	+/-	664.790
Cl	1885.973	+/-	44.271
S	9048.306	+/-	114.184
Mg	1.000	+/-	8593.768

mRFA -Ergebnisse

XL3t-69288

Reading No 6  
Mode Mining  
Time 2017-10-16 14:43  
Duration 121.79  
Units ppm  
Sigma Value 2  
Sequence Final  
Flags  
INV NR Gm154  
OBJEKT TAFELGEMAELEN  
MATERIAL HOLZ METALL FASSUNG  
ANALYSESTELLE P6 KELCHFUSS  
MESSAUFBAU STATIV  
FILTER m30lo30hi30li30  
User Login Raquet

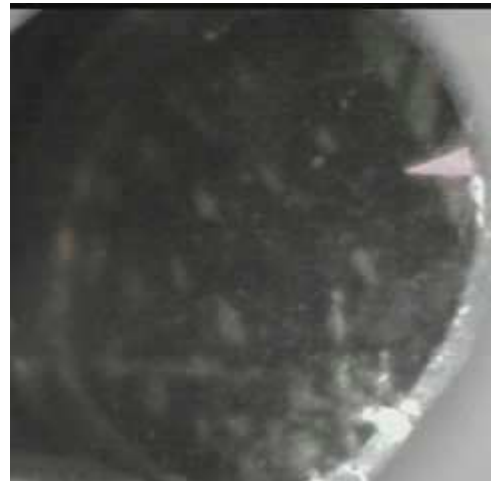


	ppm	+/-	Error
Ce	-339.000	+/-	79.569
La	1.000	+/-	36.443
Ba	1.000	+/-	39.375
Sb	51.071	+/-	14.807
Sn	9.594	+/-	7.450
Cd	12.528	+/-	5.558
Ag	13.500	+/-	3.935
Bal	791145.500	+/-	1034.856
Nb	1.000	+/-	2.281
Zr	1.000	+/-	9.075
Y	1.000	+/-	1.756
Sr	312.700	+/-	5.928
Rb	20.461	+/-	5.853
Th	1.000	+/-	148.900
Bi	1.000	+/-	105.103
Au	4397.993	+/-	61.249
As	175.181	+/-	18.273
Se	1.000	+/-	7.010
Pb	608.245	+/-	15.809
Hg	1.000	+/-	5.140
Zn	132.264	+/-	15.133
Cu	90.343	+/-	13.875
Ni	1.000	+/-	22.703
Co	1.000	+/-	43.643
Fe	9377.770	+/-	153.638
Mn	1.000	+/-	55.987
Cr	120.882	+/-	22.593
V	25.999	+/-	24.151
Ti	1310.914	+/-	142.988
Ca	116642.391	+/-	754.756
K	2350.266	+/-	148.710
Al	10737.860	+/-	1094.606
P	38034.035	+/-	401.765
Si	9518.773	+/-	578.009
Cl	2477.226	+/-	48.987
S	12434.448	+/-	137.415
Mg	1.000	+/-	7878.416

mRFA -Ergebnisse

XL3t-69288

Reading No 7  
Mode Mining  
Time 2017-10-16 14:48  
Duration 121.51  
Units ppm  
Sigma Value 2  
Sequence Final  
Flags  
INV NR Gm154  
OBJEKT TAFELGEMAELENDE  
MATERIAL HOLZ METALL FASSUNG  
ANALYSESTELLE P7 KELCH  
MESSAUFBAU STATIV  
FILTER m30lo30hi30li30  
User Login Raquet



	ppm	+/-	Error
Ce	-339.000	+/-	84.706
La	1.000	+/-	38.505
Ba	1.000	+/-	41.236
Sb	43.161	+/-	15.382
Sn	1.000	+/-	10.789
Cd	9.248	+/-	5.713
Ag	12.519	+/-	4.049
Bal	865540.375	+/-	743.985
Nb	1.000	+/-	5.262
Zr	1.000	+/-	21.098
Y	1.000	+/-	4.632
Sr	303.647	+/-	6.407
Rb	21.087	+/-	10.353
Th	1.000	+/-	310.808
Bi	1.000	+/-	254.385
Au	3530.791	+/-	60.011
As	1589.276	+/-	53.878
Se	1.000	+/-	8.479
Pb	4872.547	+/-	61.375
Hg	1.000	+/-	6.211
Zn	121.889	+/-	14.578
Cu	231.030	+/-	18.254
Ni	1.000	+/-	24.860
Co	1.000	+/-	43.467
Fe	7851.892	+/-	153.803
Mn	1.000	+/-	82.008
Cr	59.069	+/-	21.149
V	39.000	+/-	23.605
Ti	916.735	+/-	133.382
Ca	73038.055	+/-	652.403
K	2503.833	+/-	142.135
Al	1754.759	+/-	654.263
P	7658.619	+/-	193.065
Si	9586.105	+/-	457.702
Cl	3362.570	+/-	56.442
S	16953.783	+/-	187.180
Mg	1.000	+/-	6905.442

mRFA -Ergebnisse

XL3t-69288

Reading No 8  
Mode Mining  
Time 2017-10-16 14:53  
Duration 122.01  
Units ppm  
Sigma Value 2  
Sequence Final  
Flags  
INV NR Gm154  
OBJEKT TAFELGEMAELEN  
MATERIAL HOLZ METALL FASSUNG  
ANALYSESTELLE P8 SCHWERT  
MESSAUFBAU STATIV  
FILTER m30lo30hi30li30  
User Login Raquet



	ppm	+/-	Error
Ce	-339.000	+/-	75.209
La	1.000	+/-	34.691
Ba	1.000	+/-	37.013
Sb	30.647	+/-	13.910
Sn	1.000	+/-	8.318
Cd	11.305	+/-	5.347
Ag	592.286	+/-	13.698
Bal	841937.875	+/-	759.363
Nb	1.000	+/-	1.604
Zr	1.000	+/-	6.031
Y	1.000	+/-	1.188
Sr	281.061	+/-	5.107
Rb	3.369	+/-	2.867
Th	1.000	+/-	94.250
Bi	1.000	+/-	69.732
Au	20.147	+/-	6.151
As	100.032	+/-	13.115
Se	1.000	+/-	1.978
Pb	350.351	+/-	11.070
Hg	1.000	+/-	1.594
Zn	38.005	+/-	7.085
Cu	158.380	+/-	14.760
Ni	1.000	+/-	21.129
Co	1.000	+/-	40.414
Fe	8910.842	+/-	140.913
Mn	1.000	+/-	52.594
Cr	46.773	+/-	20.901
V	34.814	+/-	22.802
Ti	1309.795	+/-	135.347
Ca	121358.734	+/-	714.193
K	2763.892	+/-	200.678
Al	4531.783	+/-	793.940
P	178.219	+/-	86.706
Si	8921.004	+/-	424.655
Cl	5421.373	+/-	66.620
S	2999.368	+/-	62.173
Mg	1.000	+/-	7160.618



mRFA -Ergebnisse

XL3t-69288

Reading No 9  
Mode Mining  
Time 2017-10-16 14:57  
Duration 121.17  
Units ppm  
Sigma Value 2  
Sequence Final  
Flags  
INV NR Gm154  
OBJEKT TAFELGEMAELEN  
MATERIAL HOLZ METALL FASSUNG  
ANALYSESTELLE P9 MANTEL  
MESSAUFBAU STATIV  
FILTER m30lo30hi30li30  
User Login Raquet



	ppm	+/-	Error
Ce	-339.000	+/-	75.916
La	1.000	+/-	34.900
Ba	1.000	+/-	37.491
Sb	1.000	+/-	12.794
Sn	44.232	+/-	9.141
Cd	9.995	+/-	5.332
Ag	360.284	+/-	10.673
Bal	844767.375	+/-	785.669
Nb	1.000	+/-	4.514
Zr	1.000	+/-	15.995
Y	1.000	+/-	3.410
Sr	264.021	+/-	5.406
Rb	8.020	+/-	7.352
Th	1.000	+/-	237.999
Bi	1.000	+/-	188.389
Au	637.004	+/-	22.999
As	1001.606	+/-	41.096
Se	1.000	+/-	5.365
Pb	3231.721	+/-	41.873
Hg	1.000	+/-	3.708
Zn	65.211	+/-	9.800
Cu	1283.189	+/-	34.356
Ni	1.000	+/-	22.099
Co	1.000	+/-	22.782
Fe	1543.105	+/-	66.576
Mn	1.000	+/-	50.423
Cr	27.175	+/-	17.874
V	1.000	+/-	15.951
Ti	132.272	+/-	69.967
Ca	114879.836	+/-	831.934
K	1808.100	+/-	153.472
Al	1003.739	+/-	710.498
P	7364.418	+/-	196.041
Si	7747.965	+/-	461.254
Cl	3328.547	+/-	57.809
S	10492.225	+/-	131.846
Mg	1.000	+/-	7194.590

mRFA -Ergebnisse

XL3t-69288

Reading No 10  
Mode Mining  
Time 2017-10-16 15:02  
Duration 121.79  
Units ppm  
Sigma Value 2  
Sequence Final  
Flags  
INV NR Gm154  
OBJEKT TAFELGEMAELEN  
MATERIAL HOLZ METALL FASSUNG  
ANALYSESTELLE P10 DIAKON  
MESSAUFBAU STATIV  
FILTER m30lo30hi30li30  
User Login Raquet



	ppm	+/-	Error
Ce	-339.000	+/-	67.214
La	1.000	+/-	30.946
Ba	1.000	+/-	33.255
Sb	49.127	+/-	12.721
Sn	11.842	+/-	6.439
Cd	13.205	+/-	4.812
Ag	10.580	+/-	3.314
Bal	862102.125	+/-	680.049
Nb	1.000	+/-	2.255
Zr	1.000	+/-	8.656
Y	1.000	+/-	1.717
Sr	216.038	+/-	4.584
Rb	13.072	+/-	4.922
Th	1.000	+/-	130.276
Bi	1.000	+/-	116.770
Au	2364.023	+/-	40.978
As	259.426	+/-	20.255
Se	1.000	+/-	5.111
Pb	838.926	+/-	17.604
Hg	1.000	+/-	3.786
Zn	94.386	+/-	11.972
Cu	725.806	+/-	25.058
Ni	1.000	+/-	20.797
Co	1.000	+/-	40.661
Fe	8819.567	+/-	141.923
Mn	1.000	+/-	50.837
Cr	66.054	+/-	19.522
V	28.066	+/-	20.325
Ti	1132.000	+/-	120.970
Ca	93520.258	+/-	615.887
K	3033.458	+/-	146.140
Al	2016.751	+/-	608.583
P	10474.434	+/-	191.324
Si	5175.473	+/-	362.907
Cl	1404.833	+/-	34.494
S	7630.541	+/-	93.789
Mg	1.000	+/-	9034.997

mRFA -Ergebnisse

XL3t-69288

Reading No 11  
Mode Mining  
Time 2017-10-16 15:07  
Duration 120.09  
Units ppm  
Sigma Value 2  
Sequence Final  
Flags  
INV NR Gm154  
OBJEKT TAFELGEMAELEN  
MATERIAL HOLZ METALL FASSUNG  
ANALYSESTELLE P11 BISCHOF  
MESSAUFBAU STATIV  
FILTER m30lo30hi30li30  
User Login Raquet

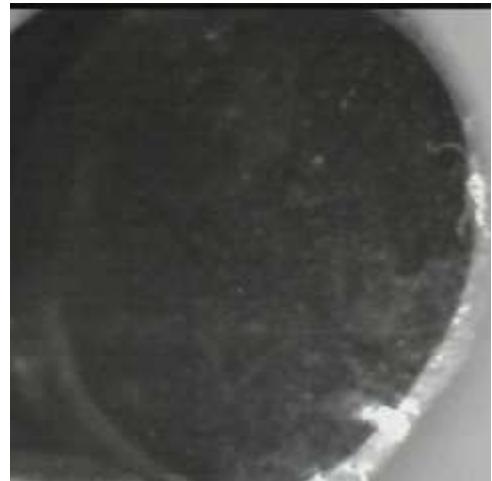


	ppm	+/-	Error
Ce	-339.000	+/-	104.331
La	1.000	+/-	47.988
Ba	1.000	+/-	51.191
Sb	1.000	+/-	17.005
Sn	15.373	+/-	9.385
Cd	1.000	+/-	8.434
Ag	1.000	+/-	5.128
Bal	891784.500	+/-	824.531
Nb	35.732	+/-	18.926
Zr	1.000	+/-	64.011
Y	1.000	+/-	15.752
Sr	166.757	+/-	7.192
Rb	1.000	+/-	31.405
Th	1.000	+/-	900.987
Bi	1.000	+/-	832.002
Au	1.000	+/-	24.076
As	7157.047	+/-	180.609
Se	1.000	+/-	16.412
Pb	28204.822	+/-	427.052
Hg	1.000	+/-	16.252
Zn	962.370	+/-	33.640
Cu	464.004	+/-	28.577
Ni	1.000	+/-	31.668
Co	1.000	+/-	24.907
Fe	465.087	+/-	59.575
Mn	1.000	+/-	69.355
Cr	1.000	+/-	27.618
V	1.000	+/-	16.995
Ti	1.000	+/-	75.868
Ca	24670.879	+/-	429.048
K	3400.806	+/-	169.547
Al	4907.960	+/-	680.670
P	1528.008	+/-	128.514
Si	11606.197	+/-	470.302
Cl	2985.973	+/-	65.938
S	21644.479	+/-	369.717
Mg	1.000	+/-	5894.157

mRFA -Ergebnisse

XL3t-69288

Reading No 12  
Mode Mining  
Time 2017-10-16 15:14  
Duration 120.58  
Units ppm  
Sigma Value 2  
Sequence Final  
Flags  
INV NR Gm154  
OBJEKT TAFELGEMAELEN  
MATERIAL HOLZ METALL FASSUNG  
ANALYSESTELLE P12 LANZE  
MESSAUFBAU STATIV  
FILTER m30lo30hi30li30  
User Login Raquet



	ppm	+/-	Error
Ce	-339.000	+/-	73.425
La	1.000	+/-	33.585
Ba	1.000	+/-	36.001
Sb	33.911	+/-	13.477
Sn	1.000	+/-	8.601
Cd	13.806	+/-	5.176
Ag	10.370	+/-	3.540
Bal	855339.500	+/-	756.741
Nb	1.000	+/-	4.249
Zr	1.000	+/-	17.239
Y	1.000	+/-	3.728
Sr	295.269	+/-	5.936
Rb	22.246	+/-	8.631
Th	1.000	+/-	255.365
Bi	1.000	+/-	205.492
Au	3351.707	+/-	54.694
As	1115.461	+/-	43.227
Se	1.000	+/-	7.507
Pb	3486.325	+/-	45.112
Hg	1.000	+/-	5.443
Zn	125.889	+/-	13.982
Cu	326.143	+/-	19.402
Ni	1.000	+/-	23.182
Co	1.000	+/-	41.217
Fe	7909.365	+/-	145.889
Mn	65.965	+/-	57.480
Cr	62.628	+/-	20.257
V	21.383	+/-	20.084
Ti	846.087	+/-	115.993
Ca	81779.898	+/-	653.690
K	2520.407	+/-	139.891
Al	2722.188	+/-	694.098
P	6983.381	+/-	185.384
Si	13559.920	+/-	519.809
Cl	4034.047	+/-	60.524
S	15374.113	+/-	165.166
Mg	1.000	+/-	6478.461