

Institut für Kunsttechnik und Konservierung
Kornmarkt 1
90402 Nürnberg

Certificate of Verification

XL3t-69288

Reading No 1
Mode Mining
Time 2014-12-09 10:41
Duration 121.77
Units ppm
Sigma Value 2
Sequence Final
Flags
INV NR GM 159B RAHMEN
OBJEKT RAHMEN
MATERIAL HOLZ METALL FASSUNG
ANALYSESTELLE P3 PROFIL INNEN
MESSAUFBAU STATIV 3mm ABSTAND
FILTER m30lo30hi30li30
User Login Raquet



	ppm	±	Error
Ce	< LOD	:	129.790
La	< LOD	:	59.774
Ba	< LOD	:	63.843
Sb	< LOD	:	23.434
Sn	< LOD	:	12.151
Cd	9.231	±	5.882
Ag	26.475	±	4.630
Bal	834176.875	±	878.135
Nb	< LOD	:	3.700
Zr	< LOD	:	20.548
Y	< LOD	:	2.962
Sr	273.308	±	5.625
Rb	32.786	±	6.453
Th	< LOD	:	220.713
Bi	< LOD	:	238.588
Au	4915.521	±	66.647
As	241.281	±	20.736
Se	< LOD	:	11.794
Pb	753.651	±	18.087
Hg	< LOD	:	8.335
Zn	138.633	±	15.932
Cu	148.604	±	15.796
Ni	< LOD	:	35.883
Co	< LOD	:	96.795
Fe	21145.221	±	243.944
Mn	< LOD	:	131.533
Cr	171.652	±	22.245
V	69.514	±	27.454
Ti	1432.231	±	159.035
Ca	40430.621	±	373.278
K	5547.382	±	194.239
Al	8838.965	±	797.858
P	38733.426	±	382.475
Si	29932.201	±	685.858
Cl	472.439	±	25.848
S	12499.175	±	129.345
Mg	< LOD	:	8956.604

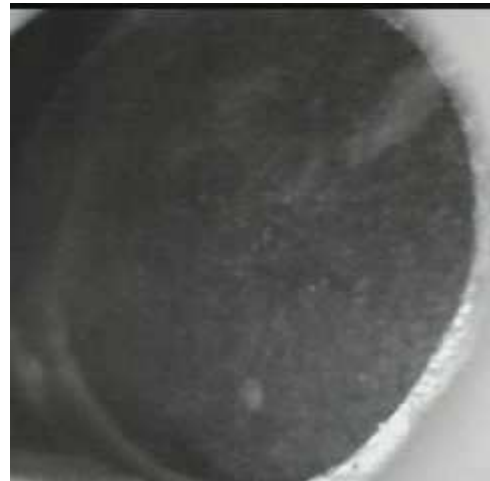
Supervised By: _____

Institut für Kunsttechnik und Konservierung
Kornmarkt 1
90402 Nürnberg

Certificate of Verification

XL3t-69288

Reading No 2
Mode Mining
Time 2014-12-09 10:45
Duration 120.49
Units ppm
Sigma Value 2
Sequence Final
Flags
INV NR GM 159B RAHMEN
OBJEKT RAHMEN
MATERIAL HOLZ METALL FASSUNG
ANALYSESTELLE P4 PROFIL AUSSEN
MESSAUFBAU STATIV 3mm ABSTAND
FILTER m30lo30hi30li30
User Login Raquet



	ppm	±	Error
Ce	< LOD	:	321.132
La	< LOD	:	199.916
Ba	< LOD	:	161.296
Sb	< LOD	:	56.375
Sn	33.659	±	15.981
Cd	< LOD	:	14.491
Ag	13.264	±	7.598
Bal	835595.000	±	1721.104
Nb	82.372	±	32.958
Zr	< LOD	:	163.623
Y	< LOD	:	43.234
Sr	< LOD	:	21.466
Rb	< LOD	:	82.551
Th	< LOD	:	2177.396
Bi	< LOD	:	2399.580
Au	< LOD	:	130.936
As	11905.539	±	309.953
Se	< LOD	:	80.834
Pb	48663.898	±	890.012
Hg	9514.292	±	177.514
Zn	704.124	±	46.325
Cu	347.688	±	33.118
Ni	108.639	±	47.226
Co	< LOD	:	70.834
Fe	2029.139	±	124.268
Mn	226.205	±	96.195
Cr	< LOD	:	51.507
V	< LOD	:	46.389
Ti	< LOD	:	231.925
Ca	46886.660	±	846.916
K	7055.951	±	288.942
Al	4261.938	±	768.734
P	2257.644	±	132.897
Si	16062.416	±	588.903
Cl	1788.158	±	51.924
S	12331.761	±	247.873
Mg	< LOD	:	10075.307

Supervised By: _____