

Certificate of Verification

XL3t-69288

Reading No 1
Mode Mining
Time 2016-04-28 10:00
Duration 122.02
Units ppm
Sigma Value 2
Sequence Final
Flags
INV NR Gm124
OBJEKT TAFELGEMAELEN
MATERIAL HOLZ METALL FASSUNG
ANALYSESTELLE P1 HINTERGRUND NIMBUS
MESSAUFBAU STATIV ANLIEGEND
FILTER m30lo30hi30li30
User Login Raquet



	ppm	+/-	Error
Ce	-339.000	+/-	116.265
La	1.000	+/-	54.537
Ba	1.000	+/-	84.696
Sb	1.000	+/-	19.336
Sn	1.000	+/-	13.737
Cd	1.000	+/-	6.739
Ag	1.000	+/-	6.971
Bal	720277.375	+/-	1443.346
Nb	1.000	+/-	2.783
Zr	1.000	+/-	11.004
Y	1.000	+/-	2.210
Sr	541.812	+/-	9.205
Rb	24.600	+/-	7.079
Th	1.000	+/-	160.472
Bi	1.000	+/-	145.271
Au	5046.631	+/-	75.457
As	162.075	+/-	21.278
Se	1.000	+/-	8.726
Pb	658.938	+/-	18.738
Hg	24.590	+/-	7.434
Zn	158.695	+/-	18.399
Cu	82.801	+/-	16.343
Ni	1.000	+/-	29.155
Co	1.000	+/-	26.195
Fe	1085.745	+/-	67.115
Mn	1.000	+/-	115.372
Cr	242.412	+/-	27.067
V	1.000	+/-	26.985
Ti	135.683	+/-	108.001
Ca	214360.672	+/-	1328.730
K	1974.456	+/-	172.656
Al	1362.007	+/-	1187.753
P	34518.117	+/-	434.591
Si	6522.708	+/-	633.111
Cl	740.444	+/-	43.974
S	12080.170	+/-	153.227
Mg	1.000	+/-	13284.192

Supervised By: _____

Certificate of Verification

XL3t-69288

Reading No 2
Mode Mining
Time 2016-04-28 10:04
Duration 122.04
Units ppm
Sigma Value 2
Sequence Final
Flags
INV NR Gm124
OBJEKT TAFELGEMAELEN
MATERIAL HOLZ METALL FASSUNG
ANALYSESTELLE P2 GEWAND PETRUS
MESSAUFBAU STATIV ANLIEGEND
FILTER m30lo30hi30li30
User Login Raquet



	ppm	+/-	Error
Ce	-339.000	+/-	102.636
La	1.000	+/-	47.398
Ba	1.000	+/-	50.708
Sb	1.000	+/-	17.108
Sn	1.000	+/-	11.988
Cd	1.000	+/-	5.996
Ag	1118.003	+/-	22.184
Bal	778665.688	+/-	1141.151
Nb	1.000	+/-	2.118
Zr	1.000	+/-	8.208
Y	1.000	+/-	1.617
Sr	493.133	+/-	8.116
Rb	13.629	+/-	4.769
Th	1.000	+/-	119.160
Bi	1.000	+/-	112.265
Au	1858.104	+/-	40.947
As	107.423	+/-	15.471
Se	1.000	+/-	5.265
Pb	361.828	+/-	13.037
Hg	278.957	+/-	9.892
Zn	134.287	+/-	14.396
Cu	279.398	+/-	20.142
Ni	1.000	+/-	27.138
Co	1.000	+/-	24.559
Fe	1081.527	+/-	63.642
Mn	90.187	+/-	67.343
Cr	61.442	+/-	21.773
V	1.000	+/-	21.003
Ti	114.605	+/-	94.490
Ca	173662.172	+/-	1057.680
K	3995.648	+/-	217.161
Al	2614.638	+/-	1014.435
P	8106.147	+/-	217.600
Si	14274.939	+/-	625.228
Cl	5337.955	+/-	76.732
S	7350.277	+/-	110.579
Mg	1.000	+/-	10016.884

Supervised By: _____

Certificate of Verification

XL3t-69288

Reading No 3
Mode Mining
Time 2016-04-28 10:09
Duration 120.21
Units ppm
Sigma Value 2
Sequence Final
Flags
INV NR Gm124
OBJEKT TAFELGEMAELEN
MATERIAL HOLZ METALL FASSUNG
ANALYSESTELLE P3 GEWAND JOHANNES
MESSAUFBAU STATIV ANLIEGEND
FILTER m30lo30hi30li30
User Login Raquet



	ppm	+/-	Error
Ce	-339.000	+/-	109.977
La	1.000	+/-	65.688
Ba	1.000	+/-	69.970
Sb	1.000	+/-	17.904
Sn	1.000	+/-	11.505
Cd	1.000	+/-	6.297
Ag	809.416	+/-	19.050
Bal	728183.875	+/-	1381.000
Nb	1.000	+/-	2.084
Zr	1.000	+/-	7.869
Y	1.000	+/-	1.519
Sr	545.909	+/-	8.838
Rb	14.043	+/-	4.604
Th	1.000	+/-	121.323
Bi	1.000	+/-	87.039
Au	1717.480	+/-	39.880
As	86.761	+/-	13.496
Se	1.000	+/-	5.260
Pb	239.616	+/-	11.115
Hg	11.177	+/-	4.639
Zn	98.854	+/-	13.111
Cu	127.505	+/-	17.101
Ni	1.000	+/-	28.773
Co	1.000	+/-	24.700
Fe	827.979	+/-	60.374
Mn	94.917	+/-	72.097
Cr	70.750	+/-	23.772
V	1.000	+/-	21.808
Ti	1.000	+/-	138.044
Ca	228016.547	+/-	1335.344
K	2018.781	+/-	205.255
Al	3066.361	+/-	1259.496
P	13475.249	+/-	293.454
Si	8556.393	+/-	614.796
Cl	4447.651	+/-	76.331
S	7590.688	+/-	122.744
Mg	1.000	+/-	15542.185

Supervised By: _____

Certificate of Verification

XL3t-69288

Reading No 4
Mode Mining
Time 2016-04-28 10:14
Duration 120.01
Units ppm
Sigma Value 2
Sequence Final
Flags
INV NR Gm124
OBJEKT TAFELGEMAELEN
MATERIAL HOLZ METALL FASSUNG
ANALYSESTELLE P4 GEWAND CHRISTUS
MESSAUFBAU STATIV ANLIEGEND
FILTER m30lo30hi30li30
User Login Raquet



	ppm	+/-	Error
Ce	-339.000	+/-	103.907
La	1.000	+/-	47.686
Ba	1.000	+/-	51.178
Sb	1.000	+/-	17.284
Sn	1.000	+/-	11.836
Cd	1.000	+/-	6.657
Ag	1161.187	+/-	22.598
Bal	813741.938	+/-	1062.552
Nb	1.000	+/-	3.591
Zr	1.000	+/-	14.504
Y	1.000	+/-	3.071
Sr	376.359	+/-	7.978
Rb	10.208	+/-	7.215
Th	1.000	+/-	214.050
Bi	1.000	+/-	166.084
Au	1653.086	+/-	45.652
As	472.188	+/-	35.112
Se	1.000	+/-	6.557
Pb	1836.061	+/-	33.262
Hg	1370.914	+/-	24.218
Zn	164.734	+/-	18.195
Cu	258.311	+/-	20.960
Ni	1.000	+/-	28.905
Co	1.000	+/-	24.962
Fe	918.847	+/-	64.728
Mn	1.000	+/-	76.492
Cr	53.660	+/-	19.087
V	1.000	+/-	19.465
Ti	85.190	+/-	84.623
Ca	138062.719	+/-	1006.906
K	2989.265	+/-	192.170
Al	910.499	+/-	844.538
P	9550.358	+/-	230.112
Si	11639.609	+/-	573.000
Cl	4963.101	+/-	74.840
S	9781.781	+/-	131.844
Mg	1.000	+/-	9271.703

Supervised By: _____

Certificate of Verification

XL3t-69288

Reading No 5
Mode Mining
Time 2016-04-28 10:20
Duration 120.62
Units ppm
Sigma Value 2
Sequence Final
Flags
INV NR Gm124
OBJEKT TAFELGEMAELEN
MATERIAL HOLZ METALL FASSUNG
ANALYSESTELLE P5 HIMMELSPFORTE
MESSAUFBAU STATIV ANLIEGEND
FILTER m30lo30hi30li30
User Login Raquet



	ppm	+/-	Error
Ce	-339.000	+/-	219.349
La	84.689	+/-	81.950
Ba	102.120	+/-	86.971
Sb	1.000	+/-	27.375
Sn	780.715	+/-	31.345
Cd	1.000	+/-	9.737
Ag	649.229	+/-	22.857
Bal	888237.813	+/-	1027.544
Nb	39.527	+/-	25.836
Zr	1.000	+/-	85.658
Y	1.000	+/-	21.773
Sr	316.830	+/-	11.575
Rb	1.000	+/-	64.364
Th	1.000	+/-	1181.094
Bi	1.000	+/-	977.134
Au	1972.948	+/-	73.077
As	9224.217	+/-	239.411
Se	1.000	+/-	19.831
Pb	36239.957	+/-	609.609
Hg	1.000	+/-	17.044
Zn	174.839	+/-	21.472
Cu	6222.215	+/-	140.777
Ni	1.000	+/-	43.811
Co	1.000	+/-	57.454
Fe	2825.884	+/-	127.871
Mn	100.887	+/-	84.872
Cr	63.134	+/-	24.610
V	1.000	+/-	21.356
Ti	1.000	+/-	103.424
Ca	5505.702	+/-	185.119
K	2452.052	+/-	225.551
Al	1313.599	+/-	680.233
P	15426.708	+/-	350.320
Si	6307.695	+/-	435.585
Cl	5521.898	+/-	117.186
S	16437.359	+/-	314.537
Mg	1.000	+/-	7702.775

Supervised By: _____

Certificate of Verification

XL3t-69288

Reading No 6
Mode Mining
Time 2016-04-28 10:25
Duration 120.46
Units ppm
Sigma Value 2
Sequence Final
Flags
INV NR Gm124
OBJEKT TAFELGEMAELEN
MATERIAL HOLZ METALL FASSUNG
ANALYSESTELLE P6 HIMMELSPORTE SCHWARZ
MESSAUFBAU STATIV ANLIEGEND
FILTER m30lo30hi30li30
User Login Raquet



	ppm	+/-	Error
Ce	-339.000	+/-	205.743
La	80.154	+/-	78.868
Ba	1.000	+/-	115.773
Sb	1.000	+/-	26.490
Sn	780.908	+/-	30.205
Cd	1.000	+/-	9.415
Ag	462.074	+/-	18.768
Bal	884551.063	+/-	1038.154
Nb	36.185	+/-	25.138
Zr	1.000	+/-	83.794
Y	1.000	+/-	21.146
Sr	325.699	+/-	11.609
Rb	1.000	+/-	61.309
Th	1.000	+/-	1159.004
Bi	1.000	+/-	1035.159
Au	1758.701	+/-	69.117
As	8987.850	+/-	236.038
Se	1.000	+/-	20.137
Pb	34724.258	+/-	591.213
Hg	1.000	+/-	16.377
Zn	168.960	+/-	21.212
Cu	6562.396	+/-	148.632
Ni	1.000	+/-	61.700
Co	1.000	+/-	44.048
Fe	3058.658	+/-	133.036
Mn	101.355	+/-	83.344
Cr	62.897	+/-	22.974
V	1.000	+/-	18.844
Ti	1.000	+/-	94.244
Ca	7174.798	+/-	199.645
K	2614.869	+/-	199.880
Al	994.205	+/-	623.670
P	16151.236	+/-	361.043
Si	8878.245	+/-	468.834
Cl	4759.304	+/-	103.125
S	17766.197	+/-	340.584
Mg	1.000	+/-	7213.022

Supervised By: _____

Certificate of Verification

XL3t-69288

Reading No 7
Mode Mining
Time 2016-04-28 10:31
Duration 121.70
Units ppm
Sigma Value 2
Sequence Final
Flags
INV NR Gm124
OBJEKT TAFELGEMAELEN
MATERIAL HOLZ METALL FASSUNG
ANALYSESTELLE P7 HELMZIER STROHMER
MESSAUFBAU STATIV ANLIEGEND
FILTER m30lo30hi30li30
User Login Raquet



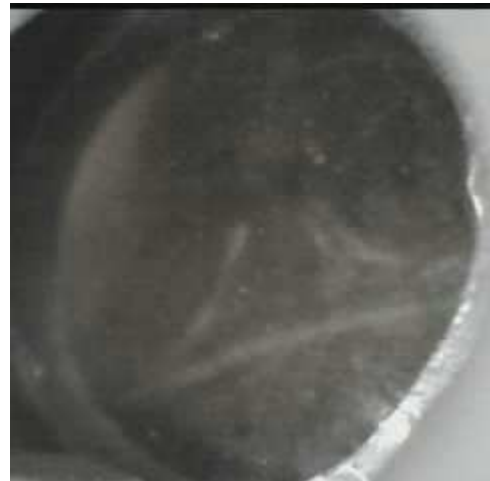
	ppm	+/-	Error
Ce	-156.967	+/-	154.014
La	100.055	+/-	70.572
Ba	92.486	+/-	74.767
Sb	1.000	+/-	23.955
Sn	538.324	+/-	23.589
Cd	1.000	+/-	8.392
Ag	346.729	+/-	15.018
Bal	881518.313	+/-	953.198
Nb	37.750	+/-	19.113
Zr	1.000	+/-	65.171
Y	1.000	+/-	16.172
Sr	324.536	+/-	10.265
Rb	1.000	+/-	31.291
Th	1.000	+/-	917.984
Bi	1.000	+/-	977.929
Au	1.000	+/-	24.044
As	6972.680	+/-	189.224
Se	20.663	+/-	14.760
Pb	26605.465	+/-	437.366
Hg	1.000	+/-	12.990
Zn	97.406	+/-	14.626
Cu	4400.227	+/-	108.738
Ni	1.000	+/-	36.192
Co	1.000	+/-	39.113
Fe	2471.051	+/-	115.121
Mn	96.322	+/-	82.921
Cr	1.000	+/-	31.965
V	1.000	+/-	24.557
Ti	1.000	+/-	107.570
Ca	16735.561	+/-	336.754
K	2361.165	+/-	186.599
Al	2423.117	+/-	645.140
P	2775.557	+/-	153.640
Si	16673.350	+/-	569.325
Cl	5898.489	+/-	119.362
S	29327.785	+/-	528.755
Mg	1.000	+/-	6931.306

Supervised By: _____

Certificate of Verification

XL3t-69288

Reading No 8
Mode Mining
Time 2016-04-28 10:35
Duration 121.02
Units ppm
Sigma Value 2
Sequence Final
Flags
INV NR Gm124
OBJEKT TAFELGEMAELEN
MATERIAL HOLZ METALL FASSUNG
ANALYSESTELLE P8 WAPPEN STROHMER
MESSAUFBAU STATIV ANLIEGEND
FILTER m30lo30hi30li30
User Login Raquet



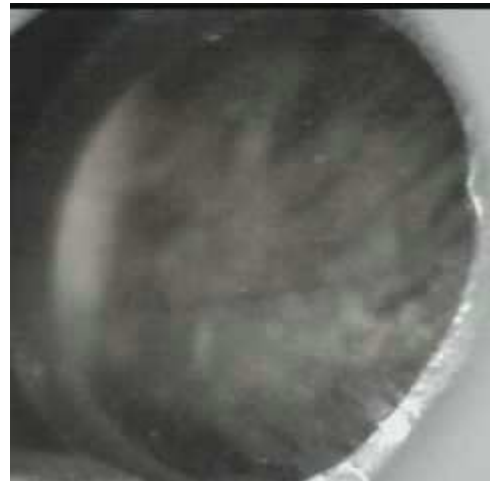
	ppm	+/-	Error
Ce	-339.000	+/-	215.985
La	1.000	+/-	128.660
Ba	1.000	+/-	94.081
Sb	1.000	+/-	28.133
Sn	825.116	+/-	37.711
Cd	1.000	+/-	13.983
Ag	2440.967	+/-	55.620
Bal	870047.625	+/-	1296.520
Nb	50.367	+/-	31.324
Zr	1.000	+/-	101.504
Y	1.000	+/-	25.952
Sr	250.581	+/-	11.244
Rb	1.000	+/-	64.274
Th	1.000	+/-	1385.801
Bi	1.000	+/-	1070.792
Au	1.000	+/-	33.321
As	9627.922	+/-	269.927
Se	1.000	+/-	19.001
Pb	45410.949	+/-	796.129
Hg	1.000	+/-	18.512
Zn	106.693	+/-	17.742
Cu	6245.147	+/-	147.296
Ni	1.000	+/-	49.023
Co	1.000	+/-	52.833
Fe	2982.496	+/-	137.577
Mn	158.451	+/-	89.097
Cr	1.000	+/-	33.120
V	1.000	+/-	24.446
Ti	1.000	+/-	99.668
Ca	5940.939	+/-	197.466
K	2990.599	+/-	264.180
Al	3086.814	+/-	717.040
P	1490.050	+/-	132.843
Si	16820.133	+/-	588.677
Cl	8179.883	+/-	169.477
S	23345.313	+/-	449.512
Mg	1.000	+/-	7681.100

Supervised By: _____

Certificate of Verification

XL3t-69288

Reading No 9
Mode Mining
Time 2016-04-28 10:40
Duration 122.67
Units ppm
Sigma Value 2
Sequence Final
Flags
INV NR Gm124
OBJEKT TAFELGEMAELEN
MATERIAL HOLZ METALL FASSUNG
ANALYSESTELLE P9 WAPPEN GROSS
MESSAUFBAU STATIV ANLIEGEND
FILTER m30lo30hi30li30
User Login Raquet



	ppm	+/-	Error
Ce	-339.000	+/-	274.080
La	1.000	+/-	114.431
Ba	96.077	+/-	93.032
Sb	1.000	+/-	29.289
Sn	679.303	+/-	33.228
Cd	1.000	+/-	10.332
Ag	1153.185	+/-	33.839
Bal	884423.375	+/-	1070.182
Nb	35.680	+/-	26.156
Zr	1.000	+/-	86.621
Y	1.000	+/-	21.985
Sr	362.833	+/-	12.421
Rb	1.000	+/-	56.153
Th	1.000	+/-	1195.107
Bi	1.000	+/-	929.671
Au	1684.881	+/-	68.063
As	9092.148	+/-	237.822
Se	1.000	+/-	18.595
Pb	36862.891	+/-	614.055
Hg	1.000	+/-	16.876
Zn	124.353	+/-	19.769
Cu	6266.088	+/-	140.966
Ni	1.000	+/-	67.838
Co	1.000	+/-	57.502
Fe	2650.633	+/-	123.698
Mn	95.230	+/-	84.620
Cr	1.000	+/-	30.395
V	1.000	+/-	25.027
Ti	1.000	+/-	106.609
Ca	9895.679	+/-	260.256
K	2505.354	+/-	278.508
Al	1208.910	+/-	715.001
P	1486.251	+/-	136.859
Si	10489.428	+/-	484.780
Cl	10139.124	+/-	196.453
S	20748.586	+/-	383.819
Mg	1.000	+/-	7613.250

Supervised By: _____

Certificate of Verification

XL3t-69288

Reading No 10
Mode Mining
Time 2016-04-28 10:45
Duration 121.56
Units ppm
Sigma Value 2
Sequence Final
Flags
INV NR Gm124
OBJEKT TAFELGEMAELEN
MATERIAL HOLZ METALL FASSUNG
ANALYSESTELLE P10 WAPPEN GROSS
MESSAUFBAU STATIV ANLIEGEND
FILTER m30lo30hi30li30
User Login Raquet



	ppm	+/-	Error
Ce	-339.000	+/-	276.272
La	97.706	+/-	85.022
Ba	1.000	+/-	136.611
Sb	1.000	+/-	28.257
Sn	696.844	+/-	29.855
Cd	1.000	+/-	10.034
Ag	27.354	+/-	8.218
Bal	876714.563	+/-	1161.575
Nb	51.765	+/-	29.593
Zr	1.000	+/-	96.406
Y	1.000	+/-	24.564
Sr	324.701	+/-	12.248
Rb	1.000	+/-	61.906
Th	1.000	+/-	1320.527
Bi	1.000	+/-	1074.033
Au	1.000	+/-	31.308
As	10342.605	+/-	268.417
Se	19.010	+/-	15.743
Pb	42841.359	+/-	733.704
Hg	1.000	+/-	17.705
Zn	116.071	+/-	17.007
Cu	5758.874	+/-	135.989
Ni	43.265	+/-	41.201
Co	1.000	+/-	43.885
Fe	2702.216	+/-	127.795
Mn	93.504	+/-	86.376
Cr	1.000	+/-	27.703
V	1.000	+/-	22.092
Ti	1.000	+/-	105.219
Ca	8285.330	+/-	232.128
K	2362.662	+/-	189.296
Al	2474.406	+/-	664.153
P	1690.802	+/-	136.656
Si	15256.514	+/-	554.945
Cl	5350.231	+/-	115.084
S	24750.260	+/-	469.239
Mg	1.000	+/-	6799.372

Supervised By: _____

Certificate of Verification

XL3t-69288

Reading No 11
Mode Mining
Time 2016-04-28 10:49
Duration 120.95
Units ppm
Sigma Value 2
Sequence Final
Flags
INV NR Gm124
OBJEKT TAFELGEMAELEN
MATERIAL HOLZ METALL FASSUNG
ANALYSESTELLE P11 WAPPEN STROHMER KLEIN
MESSAUFBAU STATIV ANLIEGEND
FILTER m30lo30hi30li30
User Login Raquet



	ppm	+/-	Error
Ce	-339.000	+/-	136.816
La	1.000	+/-	62.253
Ba	1.000	+/-	66.799
Sb	1.000	+/-	22.432
Sn	1.000	+/-	12.988
Cd	1.000	+/-	7.753
Ag	471.569	+/-	17.228
Bal	861234.750	+/-	990.788
Nb	1.000	+/-	3.788
Zr	1.000	+/-	14.516
Y	1.000	+/-	3.629
Sr	199.007	+/-	10.955
Rb	1.000	+/-	6.959
Th	1.000	+/-	209.825
Bi	1.000	+/-	163.886
Au	1.000	+/-	63.382
As	316.870	+/-	31.338
Se	8.118	+/-	6.884
Pb	754.584	+/-	26.859
Hg	10710.690	+/-	119.326
Zn	629.613	+/-	41.588
Cu	206.200	+/-	24.373
Ni	1.000	+/-	37.564
Co	1.000	+/-	36.180
Fe	1576.327	+/-	93.783
Mn	1.000	+/-	134.031
Cr	1.000	+/-	30.127
V	1.000	+/-	21.240
Ti	1.000	+/-	122.542
Ca	60756.551	+/-	607.576
K	4338.930	+/-	222.646
Al	1256.715	+/-	779.196
P	15012.131	+/-	284.382
Si	8559.949	+/-	511.124
Cl	3811.246	+/-	66.763
S	30156.729	+/-	299.549
Mg	1.000	+/-	8682.768

Supervised By: _____

Certificate of Verification

XL3t-69288

Reading No 12
Mode Mining
Time 2016-04-28 10:54
Duration 121.75
Units ppm
Sigma Value 2
Sequence Final
Flags 3mm
INV NR Gm124
OBJEKT TAFELGEMAELENDE
MATERIAL HOLZ METALL FASSUNG
ANALYSESTELLE P12 RAHMEN
MESSAUFBAU STATIV ANLIEGEND
FILTER m30lo30hi30li30
User Login Raquet



	ppm	+/-	Error
Ce	1.000	+/-	122.435
La	1.000	+/-	100.928
Ba	1.000	+/-	106.142
Sb	1.000	+/-	37.038
Sn	1.000	+/-	27.104
Cd	1.000	+/-	18.769
Ag	357.321	+/-	25.707
Bal	737156.375	+/-	2320.806
Nb	1.000	+/-	3.860
Zr	1.000	+/-	13.401
Y	1.000	+/-	2.963
Sr	383.402	+/-	12.565
Rb	12.166	+/-	7.535
Th	1.000	+/-	188.363
Bi	1.000	+/-	152.048
Au	1307.269	+/-	60.925
As	26.528	+/-	21.771
Se	1.000	+/-	7.605
Pb	331.469	+/-	22.390
Hg	22.323	+/-	8.164
Zn	79.430	+/-	20.082
Cu	25.871	+/-	21.124
Ni	1.000	+/-	41.685
Co	1.000	+/-	40.190
Fe	832.854	+/-	104.543
Mn	1.000	+/-	112.137
Cr	46.511	+/-	26.927
V	1.000	+/-	30.636
Ti	1.000	+/-	179.335
Ca	213457.234	+/-	2093.165
K	1229.165	+/-	242.069
Al	4138.616	+/-	1109.026
P	11408.135	+/-	274.463
Si	10806.294	+/-	625.900
Cl	4136.108	+/-	91.099
S	14242.883	+/-	190.558
Mg	1.000	+/-	10490.052

Supervised By: _____

Certificate of Verification

XL3t-69288

Reading No 13
Mode Mining
Time 2016-04-28 11:03
Duration 121.68
Units ppm
Sigma Value 2
Sequence Final
Flags 3mm
INV NR Gm124
OBJEKT TAFELGEMAELEN
MATERIAL HOLZ METALL FASSUNG
ANALYSESTELLE P13 RAHMEN
MESSAUFBAU STATIV ANLIEGEND
FILTER m30lo30hi30li301
User Login Raquet



	ppm	+/-	Error
Ce	1.000	+/-	128.085
La	1.000	+/-	104.982
Ba	1.000	+/-	111.405
Sb	1.000	+/-	38.836
Sn	1.000	+/-	27.486
Cd	1.000	+/-	22.529
Ag	310.193	+/-	24.681
Bal	684135.188	+/-	2767.365
Nb	1.000	+/-	3.563
Zr	1.000	+/-	11.665
Y	1.000	+/-	2.557
Sr	446.434	+/-	14.008
Rb	7.982	+/-	7.039
Th	1.000	+/-	160.016
Bi	1.000	+/-	127.965
Au	1504.708	+/-	66.912
As	28.240	+/-	16.309
Se	1.000	+/-	8.102
Pb	145.235	+/-	16.013
Hg	15.267	+/-	8.105
Zn	109.321	+/-	22.573
Cu	47.589	+/-	23.108
Ni	1.000	+/-	42.315
Co	1.000	+/-	47.574
Fe	1582.578	+/-	135.001
Mn	1.000	+/-	119.502
Cr	37.222	+/-	32.520
V	1.000	+/-	43.421
Ti	227.269	+/-	165.779
Ca	239528.906	+/-	2308.944
K	2134.527	+/-	256.224
Al	7976.460	+/-	1443.663
P	12856.104	+/-	312.630
Si	27925.215	+/-	950.455
Cl	4003.481	+/-	94.774
S	16978.049	+/-	221.036
Mg	1.000	+/-	11445.792

Supervised By: _____