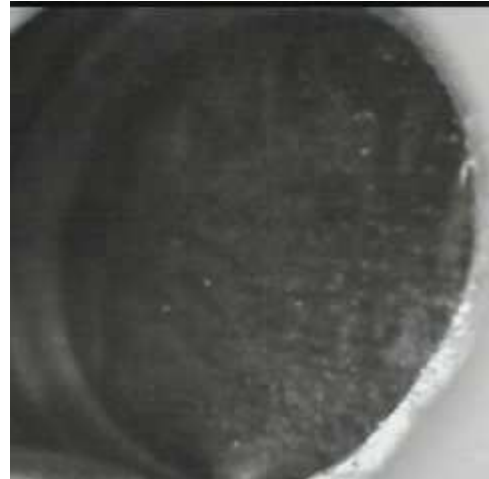


Thermo Fisher Scientific  
900 Middlesex Turnpike  
Billerica, MA 01821

**Certificate of Verification**

XL3t-69288

Reading No 1  
Mode Mining  
Time 2014-06-26 13:52  
Duration 121.79  
Units ppm  
Sigma Value 2  
Sequence Final  
Flags  
INV NR GM 1172  
OBJEKT TAFELGEMAELDE  
MATERIAL HOLZ FASSUNG  
ANALYSESTELLE P1 BART  
MESSAUFBAU STATIV ANLIEGEND  
FILTER m30lo30hi30li30  
User Login Raquet



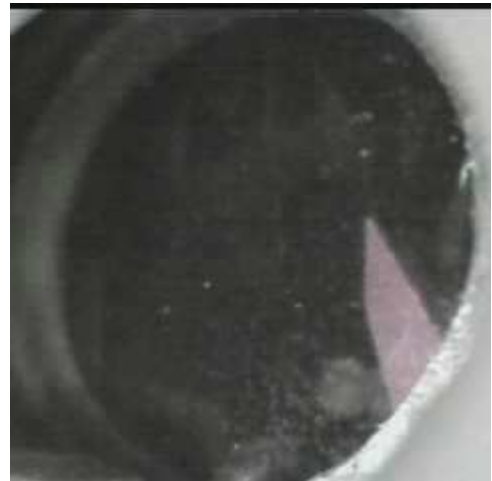
	ppm	±	Error
Ce	< LOD	:	144.804
La	< LOD	:	66.174
Ba	< LOD	:	70.899
Sb	< LOD	:	24.087
Sn	56.904	±	9.739
Cd	19.235	±	6.592
Ag	< LOD	:	8.539
Bal	887668.125	±	855.962
Nb	57.547	±	20.296
Zr	< LOD	:	101.632
Y	< LOD	:	25.326
Sr	26.378	±	5.146
Rb	< LOD	:	49.597
Th	< LOD	:	1416.251
Bi	< LOD	:	1498.597
Au	< LOD	:	41.750
As	7567.835	±	191.679
Se	< LOD	:	19.010
Pb	32183.885	±	493.109
Hg	218.422	±	22.661
Zn	180.363	±	15.672
Cu	251.948	±	22.777
Ni	< LOD	:	45.643
Co	< LOD	:	70.707
Fe	5625.400	±	168.680
Mn	< LOD	:	111.636
Cr	< LOD	:	29.675
V	< LOD	:	37.814
Ti	249.158	±	104.736
Ca	9990.962	±	220.482
K	4186.454	±	183.254
Al	4901.033	±	512.530
P	2107.698	±	101.890
Si	27455.416	±	661.347
Cl	2261.251	±	49.377
S	14946.321	±	266.998
Mg	< LOD	:	7698.504

Supervised By: \_\_\_\_\_

**Certificate of Verification**

XL3t-69288

Reading No 2  
Mode Mining  
Time 2014-06-26 13:59  
Duration 122.22  
Units ppm  
Sigma Value 2  
Sequence Final  
Flags  
INV NR GM 1172  
OBJEKT TAFELGEMAELDE  
MATERIAL HOLZ FASSUNG  
ANALYSESTELLE P2 GEWAND  
MESSAUFBAU STATIV ANLIEGEND  
FILTER m30lo30hi30li30  
User Login Raquet



	ppm	±	Error
Ce	< LOD	:	120.989
La	< LOD	:	55.523
Ba	< LOD	:	59.636
Sb	< LOD	:	23.334
Sn	27.752	±	7.749
Cd	11.528	±	5.446
Ag	< LOD	:	5.273
Bal	904730.500	±	654.260
Nb	33.757	±	13.851
Zr	< LOD	:	78.601
Y	< LOD	:	17.421
Sr	26.464	±	3.506
Rb	< LOD	:	33.918
Th	< LOD	:	1042.057
Bi	< LOD	:	1151.078
Au	< LOD	:	26.533
As	4353.162	±	130.278
Se	< LOD	:	22.214
Pb	19708.650	±	281.662
Hg	< LOD	:	15.801
Zn	76.041	±	20.414
Cu	24005.033	±	356.258
Ni	< LOD	:	39.435
Co	129.466	±	37.886
Fe	2797.409	±	99.045
Mn	122.428	±	59.041
Cr	< LOD	:	25.028
V	< LOD	:	37.413
Ti	< LOD	:	158.881
Ca	21019.809	±	322.649
K	3173.343	±	147.485
Al	947.258	±	357.807
P	512.998	±	64.534
Si	7490.131	±	284.626
Cl	2425.753	±	44.305
S	8288.798	±	129.498
Mg	< LOD	:	5864.491

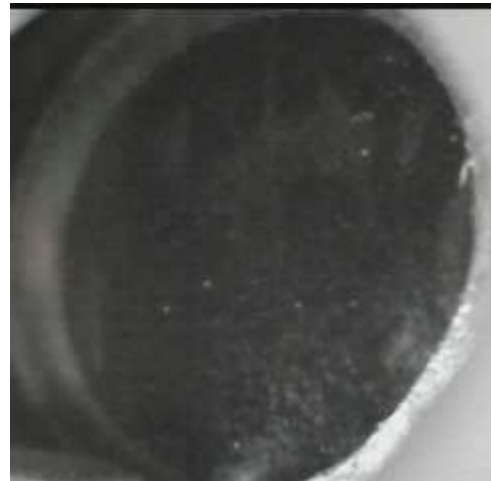
Supervised By: \_\_\_\_\_

Thermo Fisher Scientific  
900 Middlesex Turnpike  
Billerica, MA 01821

**Certificate of Verification**

XL3t-69288

Reading No 3  
Mode Mining  
Time 2014-06-26 14:04  
Duration 122.09  
Units ppm  
Sigma Value 2  
Sequence Final  
Flags  
INV NR GM 1172  
OBJEKT TAFELGEMAELEN  
MATERIAL HOLZ FASSUNG  
ANALYSESTELLE P3 HINTERGRUND  
MESSAUFBAU STATIV ANLIEGEND  
FILTER m30lo30hi30li30  
User Login Raquet



	ppm	±	Error
Ce	< LOD	:	148.423
La	< LOD	:	67.996
Ba	< LOD	:	73.137
Sb	< LOD	:	39.591
Sn	22.117	±	9.187
Cd	< LOD	:	9.664
Ag	< LOD	:	8.163
BaI	840100.000	±	1178.781
Nb	< LOD	:	16.858
Zr	< LOD	:	65.502
Y	< LOD	:	15.207
Sr	11.069	±	3.258
Rb	< LOD	:	33.625
Th	< LOD	:	948.323
Bi	< LOD	:	935.550
Au	< LOD	:	26.795
As	1135.468	±	96.308
Se	< LOD	:	17.882
Pb	8992.018	±	145.710
Hg	< LOD	:	19.313
Zn	80.163	±	40.288
Cu	97407.414	±	1055.016
Ni	82.755	±	36.386
Co	1323.856	±	64.278
Fe	4137.317	±	110.478
Mn	< LOD	:	89.908
Cr	1998.436	±	40.300
V	< LOD	:	39.506
Ti	< LOD	:	208.408
Ca	9190.947	±	181.521
K	5100.132	±	201.516
Al	3685.227	±	458.731
P	580.517	±	54.729
Si	20261.926	±	430.993
Cl	967.016	±	22.377
S	4708.515	±	68.272
Mg	< LOD	:	5973.707

Supervised By: \_\_\_\_\_

Thermo Fisher Scientific  
900 Middlesex Turnpike  
Billerica, MA 01821

### Certificate of Verification

XL3t-69288

Reading No 4  
Mode Mining  
Time 2014-06-26 14:09  
Duration 122.14  
Units ppm  
Sigma Value 2  
Sequence Final  
Flags  
INV NR GM 1172  
OBJEKT TAFELGEMAELDE  
MATERIAL HOLZ FASSUNG  
ANALYSESTELLE P4 KRAGEN  
MESSAUFBAU STATIV ANLIEGEND  
FILTER m30lo30hi30li30  
User Login Raquet



	ppm	±	Error
Ce	< LOD	:	138.850
La	< LOD	:	63.162
Ba	< LOD	:	67.832
Sb	< LOD	:	22.655
Sn	40.607	±	9.083
Cd	12.521	±	6.193
Ag	< LOD	:	7.981
Bal	893334.625	±	787.497
Nb	47.015	±	18.828
Zr	< LOD	:	95.191
Y	< LOD	:	23.502
Sr	45.283	±	4.561
Rb	< LOD	:	47.302
Th	< LOD	:	1336.256
Bi	< LOD	:	1187.250
Au	< LOD	:	31.715
As	6805.095	±	173.522
Se	< LOD	:	24.374
Pb	29868.961	±	432.522
Hg	< LOD	:	18.809
Zn	127.224	±	12.243
Cu	1046.701	±	40.143
Ni	< LOD	:	45.488
Co	< LOD	:	84.497
Fe	10220.466	±	232.954
Mn	< LOD	:	119.904
Cr	60.216	±	21.793
V	< LOD	:	55.900
Ti	515.532	±	135.222
Ca	18866.768	±	334.887
K	4225.398	±	189.757
Al	1931.424	±	459.632
P	549.125	±	88.343
Si	13744.468	±	430.319
Cl	1931.256	±	42.685
S	16627.238	±	266.097
Mg	< LOD	:	6189.677

Supervised By: \_\_\_\_\_

**Certificate of Verification**

XL3t-69288

Reading No 5  
Mode Mining  
Time 2014-06-26 14:12  
Duration 120.76  
Units ppm  
Sigma Value 2  
Sequence Final  
Flags  
INV NR GM 1172  
OBJEKT TAFELGEMAELDE  
MATERIAL HOLZ FASSUNG  
ANALYSESTELLE P5 KAPPE  
MESSAUFBAU STATIV ANLIEGEND  
FILTER m30lo30hi30li30  
User Login Raquet



	ppm	±	Error
Ce	< LOD	:	194.689
La	< LOD	:	88.696
Ba	< LOD	:	94.738
Sb	< LOD	:	31.080
Sn	45.234	±	12.099
Cd	13.987	±	8.268
Ag	< LOD	:	8.639
Bal	888272.125	±	1055.082
Nb	42.903	±	27.499
Zr	< LOD	:	135.081
Y	< LOD	:	34.537
Sr	< LOD	:	12.893
Rb	< LOD	:	70.384
Th	< LOD	:	1851.707
Bi	< LOD	:	1428.948
Au	< LOD	:	82.791
As	9542.013	±	244.198
Se	< LOD	:	22.669
Pb	39591.980	±	660.644
Hg	3802.744	±	77.381
Zn	343.086	±	28.941
Cu	738.149	±	39.250
Ni	< LOD	:	59.014
Co	< LOD	:	86.940
Fe	1781.017	±	105.705
Mn	174.817	±	78.543
Cr	< LOD	:	38.928
V	< LOD	:	35.595
Ti	< LOD	:	154.891
Ca	13969.253	±	296.806
K	3203.425	±	179.857
Al	6546.486	±	609.783
P	1143.546	±	90.219
Si	15296.951	±	474.400
Cl	2204.082	±	51.315
S	13267.297	±	247.772
Mg	< LOD	:	12107.832

Supervised By: \_\_\_\_\_