

Certificate of Verification

XL3t-69288

Reading No 9
Mode Mining
Time 2013-11-06 11:26
Duration 122.21
Units ppm
Sigma Value 2
Sequence Final
Flags
INV NR GNM GM 883
OBJEKT GEMAELDETAFEL
MATERIAL HOLZ FASSUNG
ANALYSESTELLE P1 NIMBUS
MESSAUFBAU STATIV ANLIEGEND
FILTER m30lo30hi30li30
User Login Raquet

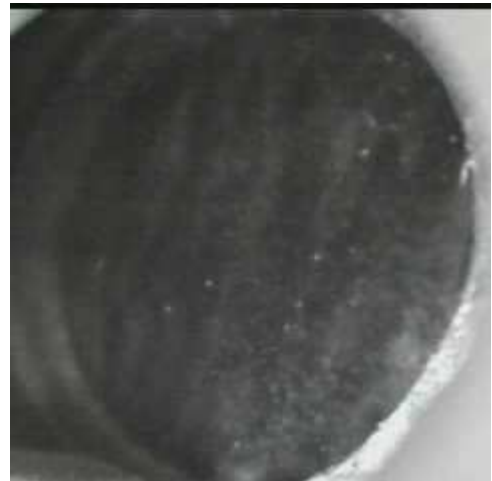


	ppm	±	Error
Ce	< LOD	:	116.453
La	< LOD	:	53.240
Ba	< LOD	:	57.502
Sb	< LOD	:	28.816
Sn	17.133	±	7.473
Cd	12.825	±	5.455
Ag	18.776	±	4.062
Bal	810955.438	±	928.164
Nb	< LOD	:	2.937
Zr	< LOD	:	11.284
Y	< LOD	:	1.924
Sr	303.182	±	5.796
Rb	31.452	±	5.936
Th	< LOD	:	168.111
Bi	< LOD	:	150.736
Au	5777.142	±	70.969
As	21.063	±	9.257
Se	< LOD	:	11.782
Pb	107.269	±	7.606
Hg	< LOD	:	8.194
Zn	116.289	±	15.960
Cu	75.792	±	13.470
Ni	< LOD	:	32.655
Co	< LOD	:	29.128
Fe	626.681	±	48.855
Mn	< LOD	:	78.425
Cr	107.583	±	17.153
V	< LOD	:	21.483
Ti	< LOD	:	130.641
Ca	128372.563	±	784.916
K	938.395	±	116.032
Al	< LOD	:	1747.264
P	39677.344	±	422.249
Si	1299.923	±	490.541
Cl	144.537	±	33.580
S	11396.600	±	134.454
Mg	< LOD	:	15183.129

Certificate of Verification

XL3t-69288

Reading No 10
Mode Mining
Time 2013-11-06 11:34
Duration 120.38
Units ppm
Sigma Value 2
Sequence Final
Flags
INV NR GNM GM 883
OBJEKT GEMAELDETAFEL
MATERIAL HOLZ FASSUNG
ANALYSESTELLE P2 SOLDAT
MESSAUFBAU STATIV ANLIEGEND
FILTER m30lo30hi30li30
User Login Raquet



	ppm	±	Error
Ce	< LOD	:	399.781
La	< LOD	:	227.029
Ba	494.998	±	108.948
Sb	96.493	±	36.474
Sn	30.584	±	18.597
Cd	< LOD	:	17.281
Ag	< LOD	:	17.737
Bal	684118.938	±	3730.059
Nb	< LOD	:	56.156
Zr	< LOD	:	213.564
Y	< LOD	:	42.488
Sr	170.563	±	12.548
Rb	< LOD	:	72.228
Th	< LOD	:	2282.988
Bi	< LOD	:	2234.756
Au	< LOD	:	51.749
As	< LOD	:	360.628
Se	< LOD	:	43.055
Pb	26236.143	±	580.979
Hg	41.690	±	21.591
Zn	< LOD	:	116.907
Cu	241461.797	±	3308.100
Ni	< LOD	:	73.684
Co	< LOD	:	55.188
Fe	1112.836	±	74.627
Mn	121.751	±	73.653
Cr	< LOD	:	49.602
V	< LOD	:	83.171
Ti	< LOD	:	651.187
Ca	12430.149	±	278.237
K	2488.787	±	208.861
Al	4474.376	±	887.547
P	607.370	±	84.261
Si	12264.298	±	423.101
Cl	2848.116	±	56.511
S	11001.057	±	180.225
Mg	< LOD	:	13440.676

Certificate of Verification

XL3t-69288

Reading No 11
Mode Mining
Time 2013-11-06 11:40
Duration 120.10
Units ppm
Sigma Value 2
Sequence Final
Flags
INV NR GNM GM 883
OBJEKT GEMAELDETAFEL
MATERIAL HOLZ FASSUNG
ANALYSESTELLE P3 HIMMEL
MESSAUFBAU STATIV ANLIEGEND
FILTER m30lo30hi30li30
User Login Raquet



	ppm	±	Error
Ce	< LOD	:	122.016
La	< LOD	:	56.029
Ba	< LOD	:	60.209
Sb	< LOD	:	20.649
Sn	< LOD	:	17.006
Cd	9.933	±	5.671
Ag	12.700	±	4.035
Bal	713796.938	±	1258.810
Nb	< LOD	:	2.493
Zr	< LOD	:	9.553
Y	< LOD	:	1.749
Sr	500.323	±	7.392
Rb	19.237	±	4.609
Th	< LOD	:	138.848
Bi	< LOD	:	111.240
Au	3382.831	±	50.524
As	< LOD	:	13.225
Se	< LOD	:	8.736
Pb	82.535	±	6.467
Hg	24.031	±	5.153
Zn	92.349	±	13.005
Cu	77.935	±	13.142
Ni	< LOD	:	32.459
Co	< LOD	:	24.557
Fe	310.095	±	39.841
Mn	< LOD	:	77.479
Cr	122.900	±	20.212
V	< LOD	:	22.775
Ti	< LOD	:	145.690
Ca	212098.797	±	1112.818
K	460.209	±	134.102
Al	2509.353	±	1189.246
P	48872.367	±	499.064
Si	3211.954	±	623.401
Cl	437.666	±	36.203
S	13977.932	±	160.895
Mg	< LOD	:	22590.332

Certificate of Verification

XL3t-69288

Reading No 12
Mode Mining
Time 2013-11-06 11:44
Duration 121.09
Units ppm
Sigma Value 2
Sequence Final
Flags
INV NR GNM GM 883
OBJEKT GEMAELDETAFEL
MATERIAL HOLZ FASSUNG
ANALYSESTELLE P4 STIFTERIN
MESSAUFBAU STATIV ANLIEGEND
FILTER m30lo30hi30li30
User Login Raquet



	ppm	±	Error
Ce	934.537	±	447.862
La	525.385	±	202.246
Ba	321.222	±	210.372
Sb	< LOD	:	147.810
Sn	43547.207	±	1168.454
Cd	141.896	±	35.508
Ag	32.341	±	17.839
Bal	696068.813	±	5350.947
Nb	225.649	±	87.635
Zr	< LOD	:	381.819
Y	< LOD	:	106.864
Sr	66.482	±	17.539
Rb	< LOD	:	213.826
Th	< LOD	:	4910.158
Bi	< LOD	:	3949.812
Au	< LOD	:	116.707
As	18638.061	±	616.491
Se	< LOD	:	71.720
Pb	126273.305	±	2942.938
Hg	< LOD	:	76.243
Zn	209.353	±	28.731
Cu	2579.150	±	106.375
Ni	< LOD	:	112.714
Co	109.391	±	61.691
Fe	902.890	±	130.882
Mn	392.013	±	142.416
Cr	< LOD	:	59.273
V	< LOD	:	46.011
Ti	< LOD	:	237.674
Ca	9531.286	±	312.309
K	3536.066	±	261.304
Al	6496.044	±	1129.395
P	3082.081	±	188.899
Si	23161.826	±	785.178
Cl	4794.743	±	129.284
S	43423.238	±	976.414
Mg	< LOD	:	16972.551

Supervised By: _____

Thermo Fisher Scientific
900 Middlesex Turnpike
Billerica, MA 01821

Certificate of Verification

XL3t-69288

Reading No 13
Mode Mining
Time 2013-11-06 11:48
Duration 121.82
Units ppm
Sigma Value 2
Sequence Final
Flags
INV NR GNM GM 883
OBJEKT GEMAELDETAFEL
MATERIAL HOLZ FASSUNG
ANALYSESTELLE P5 WAPPEN
MESSAUFBAU STATIV ANLIEGEND
FILTER m30lo30hi30li30
User Login Raquet



	ppm	±	Error
Ce	904.360	±	572.831
La	< LOD	:	384.111
Ba	< LOD	:	573.315
Sb	< LOD	:	119.356
Sn	46427.168	±	1510.296
Cd	141.818	±	43.283
Ag	45.068	±	22.766
Bal	635201.813	±	7457.098
Nb	< LOD	:	132.669
Zr	< LOD	:	411.931
Y	< LOD	:	120.156
Sr	< LOD	:	72.347
Rb	< LOD	:	230.021
Th	< LOD	:	5871.286
Bi	< LOD	:	4083.240
Au	< LOD	:	383.699
As	29476.578	±	915.302
Se	< LOD	:	137.805
Pb	101685.305	±	3003.183
Hg	36997.910	±	997.486
Zn	1968.869	±	121.034
Cu	466.602	±	60.949
Ni	357.675	±	98.620
Co	207.372	±	76.816
Fe	530.670	±	144.956
Mn	438.143	±	176.236
Cr	< LOD	:	74.459
V	< LOD	:	59.274
Ti	< LOD	:	302.392
Ca	11973.081	±	394.343
K	4326.724	±	320.372
Al	4874.745	±	1438.467
P	26262.023	±	682.813
Si	23637.303	±	900.433
Cl	6087.797	±	177.860
S	67150.961	±	1586.688
Mg	< LOD	:	22541.855

Supervised By: _____