

**Certificate of Verification**

XL3t-69288

Reading No 1  
Mode Mining  
Time 2013-11-06 09:47  
Duration 121.63  
Units ppm  
Sigma Value 2  
Sequence Final  
Flags  
INV NR GNM GM 881  
OBJEKT GEMAELDETAFEL  
MATERIAL HOLZ FASSUNG  
ANALYSESTELLE P1 NIMBUS  
MESSAUFBAU STATIV ANLIEGEND  
FILTER m30lo30hi30li30  
User Login Raquet



	ppm	±	Error
Ce	< LOD	:	112.090
La	< LOD	:	51.302
Ba	< LOD	:	55.198
Sb	< LOD	:	18.851
Sn	< LOD	:	10.371
Cd	8.462	±	5.176
Ag	12.173	±	3.691
Bal	772067.063	±	1032.790
Nb	< LOD	:	2.626
Zr	< LOD	:	10.141
Y	< LOD	:	1.768
Sr	367.703	±	6.108
Rb	24.588	±	4.953
Th	< LOD	:	150.645
Bi	< LOD	:	127.426
Au	3996.615	±	54.575
As	50.578	±	10.065
Se	< LOD	:	9.614
Pb	159.485	±	8.304
Hg	16.373	±	5.315
Zn	96.715	±	13.409
Cu	35.318	±	11.540
Ni	< LOD	:	31.347
Co	< LOD	:	24.330
Fe	193.109	±	36.009
Mn	< LOD	:	73.330
Cr	82.749	±	18.268
V	< LOD	:	18.222
Ti	< LOD	:	96.989
Ca	165379.969	±	907.491
K	899.322	±	124.655
Al	1852.334	±	938.576
P	39906.000	±	421.668
Si	3239.019	±	533.457
Cl	385.232	±	32.463
S	11160.891	±	132.496
Mg	< LOD	:	14763.285

Supervised By: \_\_\_\_\_

**Certificate of Verification**

XL3t-69288

Reading No 2  
Mode Mining  
Time 2013-11-06 09:58  
Duration 121.64  
Units ppm  
Sigma Value 2  
Sequence Final  
Flags  
INV NR GNM GM 881  
OBJEKT GEMAELDETAFEL  
MATERIAL HOLZ FASSUNG  
ANALYSESTELLE P2 ENGEL  
MESSAUFBAU STATIV ANLIEGEND  
FILTER m30lo30hi30li30  
User Login Raquet

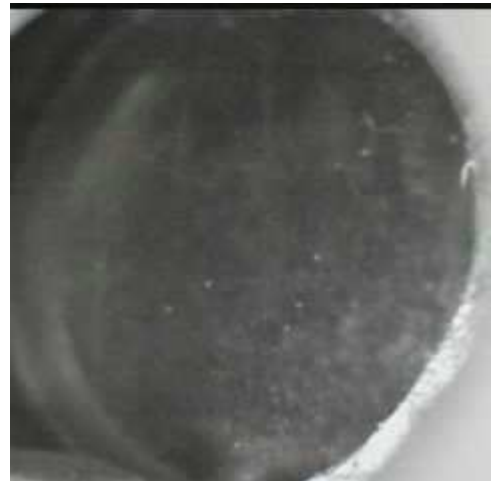


	ppm	±	Error
Ce	< LOD	:	128.487
La	< LOD	:	58.966
Ba	< LOD	:	63.768
Sb	< LOD	:	26.280
Sn	< LOD	:	11.974
Cd	< LOD	:	12.817
Ag	13.343	±	4.198
Bal	773124.563	±	1116.753
Nb	< LOD	:	3.196
Zr	< LOD	:	12.411
Y	< LOD	:	2.422
Sr	453.069	±	7.547
Rb	27.228	±	5.904
Th	< LOD	:	182.377
Bi	< LOD	:	170.264
Au	4699.685	±	65.648
As	117.264	±	15.331
Se	< LOD	:	11.494
Pb	366.920	±	12.968
Hg	83.667	±	7.570
Zn	115.197	±	15.764
Cu	34.872	±	12.867
Ni	< LOD	:	35.974
Co	< LOD	:	31.861
Fe	766.299	±	54.261
Mn	< LOD	:	97.627
Cr	130.320	±	19.847
V	< LOD	:	31.620
Ti	< LOD	:	207.968
Ca	169781.875	±	1006.068
K	917.757	±	130.362
Al	1660.124	±	872.561
P	31390.857	±	368.576
Si	3711.111	±	489.446
Cl	671.005	±	33.268
S	11926.128	±	135.187
Mg	< LOD	:	14136.258

**Certificate of Verification**

XL3t-69288

Reading No 3  
Mode Mining  
Time 2013-11-06 10:05  
Duration 91.91  
Units ppm  
Sigma Value 2  
Sequence Final  
Flags  
INV NR GNM GM 881  
OBJEKT GEMAELDETAFEL  
MATERIAL HOLZ FASSUNG  
ANALYSESTELLE P3 STIFTER  
MESSAUFBAU STATIV ANLIEGEND  
FILTER m30lo30hi30li30  
User Login Raquet



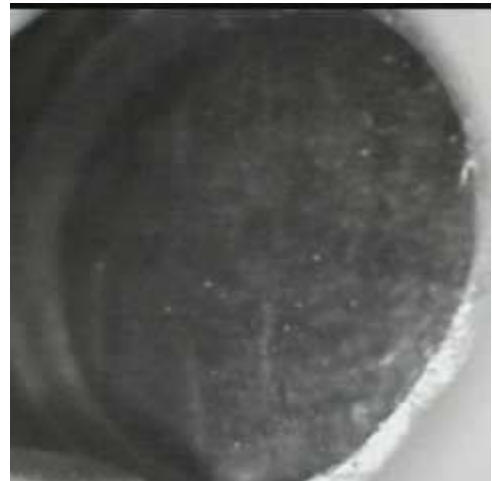
	ppm	±	Error
Ce	1157.279	±	517.423
La	472.378	±	230.277
Ba	2914.868	±	313.445
Sb	< LOD	:	106.865
Sn	50726.137	±	2454.872
Cd	104.745	±	40.837
Ag	< LOD	:	48.389
Bal	676423.063	±	6723.920
Nb	221.307	±	96.031
Zr	< LOD	:	427.649
Y	< LOD	:	121.421
Sr	34.029	±	18.749
Rb	< LOD	:	236.067
Th	< LOD	:	5582.740
Bi	< LOD	:	5683.314
Au	< LOD	:	135.387
As	23630.336	±	981.262
Se	< LOD	:	126.728
Pb	127155.094	±	4888.960
Hg	< LOD	:	95.186
Zn	552.791	±	60.872
Cu	31991.541	±	983.816
Ni	< LOD	:	130.222
Co	< LOD	:	114.582
Fe	2143.134	±	186.215
Mn	498.386	±	161.301
Cr	< LOD	:	86.699
V	< LOD	:	60.265
Ti	< LOD	:	286.546
Ca	19364.742	±	578.245
K	3421.889	±	293.680
Al	< LOD	:	27854.809
P	< LOD	:	6535.918
Si	16831.758	±	11067.521
Cl	3389.903	±	1185.984
S	38334.105	±	4056.170
Mg	< LOD	:	315798.688

Supervised By: \_\_\_\_\_

**Certificate of Verification**

XL3t-69288

Reading No 4  
Mode Mining  
Time 2013-11-06 10:10  
Duration 121.98  
Units ppm  
Sigma Value 2  
Sequence Final  
Flags  
INV NR GNM GM 881  
OBJEKT GEMAELDETAFEL  
MATERIAL HOLZ FASSUNG  
ANALYSESTELLE P4 STIFTER  
MESSAUFBAU STATIV ANLIEGEND  
FILTER m30lo30hi30li30  
User Login Raquet



	ppm	±	Error
Ce	1605.188	±	452.586
La	892.873	±	205.557
Ba	1122.451	±	219.923
Sb	162.306	±	68.940
Sn	50846.793	±	1416.504
Cd	84.147	±	37.010
Ag	43.920	±	19.576
Bal	544758.313	±	8461.197
Nb	246.770	±	89.525
Zr	< LOD	:	438.420
Y	< LOD	:	116.077
Sr	< LOD	:	30.374
Rb	< LOD	:	217.115
Th	< LOD	:	5524.718
Bi	< LOD	:	5890.373
Au	< LOD	:	140.034
As	9566.673	±	604.443
Se	< LOD	:	56.382
Pb	126416.102	±	3343.353
Hg	157.489	±	63.599
Zn	483.064	±	81.749
Cu	104483.992	±	2331.082
Ni	< LOD	:	134.412
Co	1650.834	±	127.978
Fe	2908.472	±	186.020
Mn	234.332	±	132.422
Cr	< LOD	:	71.226
V	< LOD	:	62.897
Ti	< LOD	:	300.154
Ca	72479.813	±	1430.285
K	5436.463	±	331.344
Al	28179.016	±	2190.919
P	2726.295	±	169.628
Si	15811.564	±	632.670
Cl	3808.764	±	101.668
S	25398.875	±	544.341
Mg	< LOD	:	21314.313

Supervised By: \_\_\_\_\_

**Certificate of Verification**

XL3t-69288

Reading No 5  
Mode Mining  
Time 2013-11-06 10:14  
Duration 120.85  
Units ppm  
Sigma Value 2  
Sequence Final  
Flags  
INV NR GNM GM 881  
OBJEKT GEMAELDETAFEL  
MATERIAL HOLZ FASSUNG  
ANALYSESTELLE P5 STIFTER  
MESSAUFBAU STATIV ANLIEGEND  
FILTER m30lo30hi30li30  
User Login Raquet



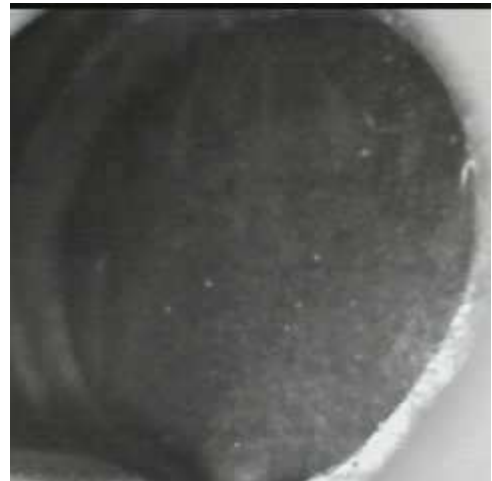
	ppm	±	Error
Ce	< LOD	:	647.591
La	< LOD	:	291.399
Ba	< LOD	:	465.315
Sb	< LOD	:	91.906
Sn	47990.793	±	1306.869
Cd	159.633	±	36.914
Ag	54.209	±	19.101
Bal	654399.188	±	6216.963
Nb	270.311	±	90.593
Zr	< LOD	:	397.941
Y	< LOD	:	111.824
Sr	81.267	±	18.630
Rb	< LOD	:	220.010
Th	< LOD	:	5150.758
Bi	< LOD	:	5114.229
Au	< LOD	:	122.376
As	17476.240	±	639.801
Se	< LOD	:	86.864
Pb	131917.109	±	3214.890
Hg	< LOD	:	78.206
Zn	198.273	±	43.135
Cu	26203.086	±	613.571
Ni	< LOD	:	116.333
Co	223.803	±	66.673
Fe	566.528	±	118.857
Mn	347.960	±	137.883
Cr	< LOD	:	61.455
V	< LOD	:	64.760
Ti	< LOD	:	241.841
Ca	16779.672	±	450.156
K	2201.877	±	232.266
Al	10667.696	±	1425.164
P	3208.561	±	203.694
Si	18368.643	±	708.635
Cl	4199.345	±	118.111
S	47966.512	±	1092.320
Mg	< LOD	:	20054.051

Supervised By: \_\_\_\_\_

**Certificate of Verification**

XL3t-69288

Reading No 6  
Mode Mining  
Time 2013-11-06 10:19  
Duration 121.32  
Units ppm  
Sigma Value 2  
Sequence Final  
Flags  
INV NR GNM GM 881  
OBJEKT GEMAELDETAFEL  
MATERIAL HOLZ FASSUNG  
ANALYSESTELLE P6 BAUMSTUMPF  
MESSAUFBAU STATIV ANLIEGEND  
FILTER m30lo30hi30li30  
User Login Raquet



	ppm	±	Error
Ce	< LOD	:	208.268
La	< LOD	:	95.180
Ba	< LOD	:	101.303
Sb	< LOD	:	55.376
Sn	56.036	±	13.193
Cd	< LOD	:	11.544
Ag	9.452	±	5.888
Bal	842837.875	±	1400.630
Nb	74.812	±	24.580
Zr	< LOD	:	185.678
Y	< LOD	:	32.172
Sr	401.152	±	13.253
Rb	< LOD	:	59.937
Th	< LOD	:	1743.634
Bi	< LOD	:	2173.599
Au	< LOD	:	41.902
As	6277.917	±	221.944
Se	< LOD	:	36.867
Pb	36115.785	±	647.160
Hg	< LOD	:	25.196
Zn	121.739	±	33.664
Cu	48179.906	±	803.647
Ni	< LOD	:	58.187
Co	< LOD	:	83.359
Fe	8039.449	±	203.719
Mn	< LOD	:	148.838
Cr	< LOD	:	41.741
V	< LOD	:	43.434
Ti	336.685	±	138.773
Ca	13005.574	±	279.552
K	5257.520	±	237.571
Al	5087.690	±	695.857
P	1181.948	±	99.281
Si	16838.775	±	533.482
Cl	3660.973	±	74.885
S	12424.890	±	225.759
Mg	< LOD	:	10409.095

Supervised By: \_\_\_\_\_

**Certificate of Verification**

XL3t-69288

Reading No 7  
Mode Mining  
Time 2013-11-06 10:25  
Duration 121.24  
Units ppm  
Sigma Value 2  
Sequence Final  
Flags  
INV NR GNM GM 881  
OBJEKT GEMAELEDTAFEL  
MATERIAL HOLZ FASSUNG  
ANALYSESTELLE P7 WAPPEN  
MESSAUFBAU STATIV ANLIEGEND  
FILTER m30lo30hi30li30  
User Login Raquet



	ppm	±	Error
Ce	< LOD	:	769.223
La	495.463	±	232.854
Ba	498.394	±	245.840
Sb	< LOD	:	108.416
Sn	60728.320	±	1805.689
Cd	202.001	±	44.050
Ag	31.883	±	20.649
Bal	641973.438	±	6703.535
Nb	< LOD	:	167.598
Zr	< LOD	:	367.291
Y	< LOD	:	106.556
Sr	< LOD	:	56.122
Rb	< LOD	:	201.493
Th	< LOD	:	4831.275
Bi	< LOD	:	4202.784
Au	< LOD	:	299.811
As	23857.891	±	742.375
Se	< LOD	:	131.065
Pb	97149.133	±	2618.260
Hg	23658.164	±	605.526
Zn	1662.417	±	101.829
Cu	1477.949	±	89.279
Ni	345.148	±	96.543
Co	149.562	±	72.370
Fe	623.028	±	142.002
Mn	452.391	±	171.329
Cr	< LOD	:	75.637
V	< LOD	:	67.219
Ti	< LOD	:	295.823
Ca	11657.751	±	390.121
K	3283.097	±	293.944
Al	3826.750	±	1401.828
P	29375.916	±	720.459
Si	17179.611	±	768.153
Cl	5446.083	±	153.124
S	74744.234	±	1670.327
Mg	< LOD	:	23367.164