

Thermo Fisher Scientific
900 Middlesex Turnpike
Billerica, MA 01821

Certificate of Verification

XL3t-69288

Reading No 1
Mode Mining
Time 2014-11-13 10:10
Duration 120.38
Units ppm
Sigma Value 2
Sequence Final
Flags
INV NR GM 1261
OBJEKT TAFELGEMAELDE
MATERIAL HOLZ METALL FASSUNG
ANALYSESTELLE P1 HINTERGRUND
MESSAUFBAU STATIV ANLIEGEND
FILTER m30lo30hi30li30
User Login Raquet



	ppm	±	Error
Ce	< LOD	:	128.346
La	< LOD	:	58.740
Ba	< LOD	:	63.692
Sb	< LOD	:	27.198
Sn	< LOD	:	19.028
Cd	< LOD	:	13.580
Ag	10.864	±	4.188
Bal	765786.063	±	1190.583
Nb	< LOD	:	2.876
Zr	< LOD	:	10.574
Y	< LOD	:	2.159
Sr	277.490	±	5.589
Rb	13.007	±	4.547
Th	< LOD	:	156.821
Bi	< LOD	:	134.811
Au	2450.262	±	44.582
As	68.784	±	13.633
Se	< LOD	:	8.438
Pb	320.820	±	11.784
Hg	14.057	±	4.828
Zn	66.597	±	12.220
Cu	249.240	±	18.428
Ni	< LOD	:	35.222
Co	< LOD	:	61.339
Fe	7151.908	±	136.329
Mn	< LOD	:	86.153
Cr	75.270	±	20.140
V	38.536	±	22.440
Ti	1148.231	±	133.019
Ca	141884.703	±	850.685
K	1761.300	±	138.688
Al	29207.104	±	1800.302
P	20635.488	±	313.811
Si	22326.629	±	753.901
Cl	454.593	±	36.307
S	6058.988	±	98.535
Mg	< LOD	:	13038.242

Supervised By: _____

Certificate of Verification

XL3t-69288

Reading No 2
Mode Mining
Time 2014-11-13 10:14
Duration 121.38
Units ppm
Sigma Value 2
Sequence Final
Flags
INV NR GM 1261
OBJEKT TAFELGEMAELDE
MATERIAL HOLZ METALL FASSUNG
ANALYSESTELLE P2 HINTERGRUND
MESSAUFBAU STATIV ANLIEGEND
FILTER m30lo30hi30li30
User Login Raquet



	ppm	±	Error
Ce	< LOD	:	117.964
La	< LOD	:	54.134
Ba	< LOD	:	58.288
Sb	< LOD	:	19.746
Sn	< LOD	:	11.124
Cd	10.287	±	5.411
Ag	26.033	±	4.277
Bal	736010.875	±	1361.847
Nb	< LOD	:	3.548
Zr	< LOD	:	13.860
Y	< LOD	:	2.595
Sr	295.715	±	6.204
Rb	51.169	±	7.702
Th	< LOD	:	205.497
Bi	< LOD	:	190.601
Au	8779.938	±	99.362
As	34.150	±	12.260
Se	< LOD	:	15.617
Pb	191.313	±	10.457
Hg	< LOD	:	10.690
Zn	175.880	±	20.267
Cu	136.780	±	16.040
Ni	< LOD	:	37.460
Co	< LOD	:	62.147
Fe	6697.971	±	135.675
Mn	< LOD	:	88.317
Cr	138.305	±	21.039
V	< LOD	:	30.699
Ti	862.899	±	118.802
Ca	100217.703	±	700.255
K	1155.947	±	123.320
Al	23909.266	±	1603.402
P	86687.563	±	669.407
Si	13445.468	±	753.384
Cl	< LOD	:	55.404
S	21141.359	±	200.795
Mg	< LOD	:	13845.732

Certificate of Verification

XL3t-69288

Reading No 3
Mode Mining
Time 2014-11-13 10:18
Duration 120.51
Units ppm
Sigma Value 2
Sequence Final
Flags
INV NR GM 1261
OBJEKT TAFELGEMAELEN
MATERIAL HOLZ METALL FASSUNG
ANALYSESTELLE P3 KRONE
MESSAUFBAU STATIV ANLIEGEND
FILTER m30lo30hi30li30
User Login Raquet



	ppm	±	Error
Ce	< LOD	:	126.222
La	< LOD	:	57.867
Ba	< LOD	:	62.284
Sb	< LOD	:	34.408
Sn	13.270	±	7.935
Cd	< LOD	:	8.591
Ag	11.498	±	4.063
Bal	806056.313	±	963.688
Nb	< LOD	:	3.352
Zr	< LOD	:	14.837
Y	< LOD	:	2.692
Sr	354.972	±	6.324
Rb	22.424	±	5.564
Th	< LOD	:	194.835
Bi	< LOD	:	181.508
Au	3681.599	±	55.106
As	191.943	±	18.400
Se	< LOD	:	10.048
Pb	607.615	±	15.829
Hg	< LOD	:	6.891
Zn	123.456	±	15.285
Cu	3233.323	±	54.641
Ni	< LOD	:	35.075
Co	< LOD	:	74.778
Fe	12185.264	±	174.134
Mn	95.069	±	59.570
Cr	93.295	±	25.670
V	46.730	±	27.864
Ti	1561.791	±	164.899
Ca	111187.719	±	724.463
K	2294.782	±	157.554
Al	8329.863	±	1037.263
P	25778.061	±	333.482
Si	12867.480	±	604.353
Cl	1699.700	±	44.545
S	9556.281	±	119.816
Mg	< LOD	:	11889.324

Certificate of Verification

XL3t-69288

Reading No 4
Mode Mining
Time 2014-11-13 10:23
Duration 121.14
Units ppm
Sigma Value 2
Sequence Final
Flags
INV NR GM 1261
OBJEKT TAFELGEMAELDE
MATERIAL HOLZ METALL FASSUNG
ANALYSESTELLE P4 KRONE
MESSAUFBAU STATIV ANLIEGEND
FILTER m30lo30hi30li30
User Login Raquet



	ppm	±	Error
Ce	< LOD	:	129.900
La	< LOD	:	59.606
Ba	< LOD	:	64.081
Sb	< LOD	:	27.464
Sn	74.412	±	9.254
Cd	< LOD	:	9.563
Ag	< LOD	:	5.800
Bal	807480.563	±	1005.650
Nb	< LOD	:	5.454
Zr	< LOD	:	23.912
Y	< LOD	:	4.648
Sr	352.718	±	6.683
Rb	21.890	±	7.349
Th	< LOD	:	319.311
Bi	< LOD	:	304.623
Au	2584.357	±	48.250
As	626.618	±	36.263
Se	< LOD	:	10.418
Pb	2372.347	±	35.684
Hg	< LOD	:	7.255
Zn	95.202	±	15.134
Cu	5727.801	±	81.980
Ni	< LOD	:	37.330
Co	< LOD	:	76.846
Fe	12493.229	±	188.187
Mn	121.592	±	63.104
Cr	97.853	±	24.942
V	< LOD	:	41.363
Ti	1596.204	±	163.929
Ca	102772.016	±	754.393
K	3318.036	±	173.282
Al	10946.197	±	1045.376
P	19758.244	±	289.054
Si	15640.252	±	593.515
Cl	1785.160	±	42.368
S	12089.523	±	137.387
Mg	< LOD	:	11386.158

Thermo Fisher Scientific
900 Middlesex Turnpike
Billerica, MA 01821

Certificate of Verification

XL3t-69288

Reading No 5
Mode Mining
Time 2014-11-13 10:31
Duration 121.99
Units ppm
Sigma Value 2
Sequence Final
Flags
INV NR GM 1261
OBJEKT TAFELGEMAELDE
MATERIAL HOLZ METALL FASSUNG
ANALYSESTELLE P5 WELTKUGEL
MESSAUFBAU STATIV ANLIEGEND
FILTER m30lo30hi30li30
User Login Raquet



	ppm	±	Error
Ce	< LOD	:	106.777
La	< LOD	:	49.347
Ba	< LOD	:	53.331
Sb	< LOD	:	22.041
Sn	15.091	±	6.825
Cd	8.964	±	4.952
Ag	5.656	±	3.302
Bal	840743.813	±	798.424
Nb	< LOD	:	3.156
Zr	< LOD	:	12.451
Y	< LOD	:	2.463
Sr	266.423	±	5.273
Rb	15.901	±	4.873
Th	< LOD	:	186.602
Bi	< LOD	:	161.342
Au	2335.412	±	41.925
As	230.744	±	18.822
Se	< LOD	:	8.130
Pb	651.506	±	15.993
Hg	< LOD	:	5.584
Zn	72.724	±	13.126
Cu	4210.702	±	62.247
Ni	< LOD	:	33.390
Co	< LOD	:	67.030
Fe	10142.372	±	154.874
Mn	< LOD	:	94.856
Cr	88.150	±	20.446
V	36.743	±	22.329
Ti	1177.034	±	131.965
Ca	95646.836	±	627.203
K	2813.682	±	146.626
Al	5989.396	±	797.912
P	14746.175	±	230.919
Si	12181.282	±	503.309
Cl	1522.254	±	37.634
S	7099.142	±	92.885
Mg	< LOD	:	10084.172

Supervised By: _____

Certificate of Verification

XL3t-69288

Reading No 6
Mode Mining
Time 2014-11-13 10:35
Duration 122.00
Units ppm
Sigma Value 2
Sequence Final
Flags
INV NR GM 1261
OBJEKT TAFELGEMAELDE
MATERIAL HOLZ METALL FASSUNG
ANALYSESTELLE P6 WELTKUGEL
MESSAUFBAU STATIV ANLIEGEND
FILTER m30lo30hi30li30
User Login Raquet



	ppm	±	Error
Ce	< LOD	:	112.201
La	< LOD	:	51.547
Ba	< LOD	:	55.508
Sb	< LOD	:	20.383
Sn	< LOD	:	10.566
Cd	12.030	±	5.292
Ag	7.232	±	3.535
Bal	750008.063	±	1195.470
Nb	< LOD	:	2.667
Zr	< LOD	:	10.041
Y	< LOD	:	2.037
Sr	298.144	±	5.525
Rb	15.069	±	4.369
Th	< LOD	:	149.808
Bi	< LOD	:	124.327
Au	2478.782	±	42.671
As	75.045	±	13.094
Se	< LOD	:	7.715
Pb	326.741	±	11.248
Hg	< LOD	:	5.338
Zn	78.048	±	11.746
Cu	76.694	±	13.004
Ni	< LOD	:	32.314
Co	< LOD	:	66.167
Fe	9876.876	±	152.749
Mn	< LOD	:	81.570
Cr	124.584	±	22.607
V	< LOD	:	39.497
Ti	1441.578	±	155.757
Ca	141978.156	±	822.738
K	1458.491	±	139.258
Al	30689.412	±	1674.550
P	35938.383	±	375.448
Si	14625.121	±	624.606
Cl	156.468	±	25.542
S	10273.214	±	118.337
Mg	< LOD	:	12353.037

Supervised By: _____

Certificate of Verification

XL3t-69288

Reading No 7
Mode Mining
Time 2014-11-13 10:40
Duration 122.14
Units ppm
Sigma Value 2
Sequence Final
Flags
INV NR GM 1261
OBJEKT TAFELGEMAELDE
MATERIAL HOLZ METALL FASSUNG
ANALYSESTELLE P7 HELM LINKS
MESSAUFBAU STATIV ANLIEGEND
FILTER m30lo30hi30li30
User Login Raquet



	ppm	±	Error
Ce	< LOD	:	130.612
La	< LOD	:	60.045
Ba	< LOD	:	64.381
Sb	< LOD	:	21.774
Sn	< LOD	:	14.341
Cd	10.402	±	5.949
Ag	605.827	±	15.224
Bal	819438.188	±	1063.267
Nb	19.016	±	8.559
Zr	< LOD	:	59.966
Y	< LOD	:	10.861
Sr	234.576	±	6.237
Rb	< LOD	:	20.327
Th	< LOD	:	676.335
Bi	< LOD	:	788.992
Au	< LOD	:	24.857
As	2528.795	±	84.899
Se	< LOD	:	19.387
Pb	10360.684	±	134.636
Hg	< LOD	:	9.656
Zn	54.841	±	15.707
Cu	13508.771	±	195.604
Ni	< LOD	:	39.291
Co	< LOD	:	62.316
Fe	6226.729	±	146.100
Mn	< LOD	:	145.018
Cr	< LOD	:	40.269
V	< LOD	:	56.524
Ti	680.771	±	136.036
Ca	72576.531	±	773.960
K	3251.339	±	168.761
Al	11407.433	±	939.263
P	2711.335	±	131.930
Si	39185.605	±	790.460
Cl	1920.332	±	41.141
S	15278.911	±	193.160
Mg	< LOD	:	14600.294

Supervised By: _____

Thermo Fisher Scientific
900 Middlesex Turnpike
Billerica, MA 01821

Certificate of Verification

XL3t-69288

Reading No 8
Mode Mining
Time 2014-11-13 10:47
Duration 122.24
Units ppm
Sigma Value 2
Sequence Final
Flags
INV NR GM 1261
OBJEKT TAFELGEMAELDE
MATERIAL HOLZ METALL FASSUNG
ANALYSESTELLE P8 WAPPEN
MESSAUFBAU STATIV ANLIEGEND
FILTER m30lo30hi30li30
User Login Raquet



	ppm	±	Error
Ce	< LOD	:	221.414
La	< LOD	:	101.177
Ba	< LOD	:	107.837
Sb	< LOD	:	34.494
Sn	1190.043	±	35.465
Cd	< LOD	:	14.082
Ag	< LOD	:	9.132
Bal	871743.000	±	1210.729
Nb	93.693	±	31.869
Zr	< LOD	:	151.967
Y	< LOD	:	39.753
Sr	152.603	±	9.057
Rb	< LOD	:	78.274
Th	< LOD	:	2057.755
Bi	< LOD	:	2145.103
Au	< LOD	:	48.034
As	11356.817	±	288.127
Se	< LOD	:	40.299
Pb	50453.426	±	858.048
Hg	< LOD	:	27.795
Zn	102.084	±	12.948
Cu	1499.864	±	57.081
Ni	< LOD	:	60.188
Co	< LOD	:	44.317
Fe	< LOD	:	81.270
Mn	< LOD	:	120.846
Cr	< LOD	:	41.789
V	< LOD	:	28.868
Ti	< LOD	:	131.353
Ca	1931.682	±	102.444
K	194.533	±	104.293
Al	2660.671	±	616.479
P	2344.954	±	152.650
Si	14583.329	±	526.891
Cl	2740.434	±	68.551
S	38685.707	±	760.653
Mg	< LOD	:	9670.549

Supervised By: _____

Certificate of Verification

XL3t-69288

Reading No 9
Mode Mining
Time 2014-11-13 10:52
Duration 120.92
Units ppm
Sigma Value 2
Sequence Final
Flags
INV NR GM 1261
OBJEKT TAFELGEMAELDE
MATERIAL HOLZ METALL FASSUNG
ANALYSESTELLE P9 HELM LINKS
MESSAUFBAU STATIV ANLIEGEND
FILTER m30lo30hi30li30
User Login Raquet



	ppm	±	Error
Ce	< LOD	:	109.922
La	< LOD	:	50.435
Ba	< LOD	:	54.838
Sb	< LOD	:	20.104
Sn	< LOD	:	11.730
Cd	29.537	±	5.653
Ag	157.664	±	7.215
Bal	757857.188	±	1104.673
Nb	< LOD	:	2.340
Zr	< LOD	:	8.806
Y	< LOD	:	1.790
Sr	309.250	±	5.441
Rb	5.160	±	3.146
Th	< LOD	:	130.807
Bi	< LOD	:	114.187
Au	626.985	±	20.550
As	70.721	±	12.610
Se	< LOD	:	4.433
Pb	330.812	±	10.901
Hg	4.993	±	2.919
Zn	84.851	±	9.441
Cu	60.589	±	12.253
Ni	< LOD	:	31.724
Co	< LOD	:	54.435
Fe	6833.972	±	124.182
Mn	< LOD	:	145.578
Cr	261.381	±	28.039
V	< LOD	:	98.197
Ti	1661.984	±	322.182
Ca	177305.125	±	951.753
K	1737.921	±	163.065
Al	19018.924	±	1527.736
P	5393.397	±	181.280
Si	20648.846	±	678.595
Cl	1343.956	±	39.926
S	6256.786	±	96.284
Mg	< LOD	:	17360.279

Certificate of Verification

XL3t-69288

Reading No 10
Mode Mining
Time 2014-11-13 10:56
Duration 120.07
Units ppm
Sigma Value 2
Sequence Final
Flags
INV NR GM 1261
OBJEKT TAFELGEMAELEN
MATERIAL HOLZ METALL FASSUNG
ANALYSESTELLE P10 HELM LINKS
MESSAUFBAU STATIV ANLIEGEND
FILTER m30lo30hi30li30
User Login Raquet



	ppm	±	Error
Ce	< LOD	:	138.353
La	< LOD	:	64.006
Ba	< LOD	:	68.686
Sb	< LOD	:	27.894
Sn	< LOD	:	16.633
Cd	13.160	±	6.429
Ag	940.035	±	20.595
Bal	813802.250	±	1103.242
Nb	22.953	±	8.814
Zr	< LOD	:	50.787
Y	< LOD	:	10.932
Sr	234.745	±	6.280
Rb	< LOD	:	21.506
Th	< LOD	:	695.659
Bi	< LOD	:	743.061
Au	546.766	±	28.119
As	2701.309	±	87.453
Se	< LOD	:	16.798
Pb	10890.800	±	139.991
Hg	< LOD	:	10.315
Zn	49.865	±	9.900
Cu	557.764	±	27.451
Ni	< LOD	:	39.978
Co	< LOD	:	48.062
Fe	2713.716	±	99.832
Mn	< LOD	:	99.802
Cr	< LOD	:	30.569
V	< LOD	:	33.462
Ti	631.826	±	123.842
Ca	107153.070	±	1104.906
K	763.874	±	171.613
Al	13707.186	±	1196.023
P	6582.364	±	197.314
Si	19708.945	±	651.907
Cl	5242.058	±	83.521
S	13706.913	±	187.144
Mg	< LOD	:	14300.240

Certificate of Verification

XL3t-69288

Reading No 11
Mode Mining
Time 2014-11-13 11:00
Duration 120.55
Units ppm
Sigma Value 2
Sequence Final
Flags
INV NR GM 1261
OBJEKT TAFELGEMAELEN
MATERIAL HOLZ METALL FASSUNG
ANALYSESTELLE P11 HINTERGRUND SOCKEL
MESSAUFBAU STATIV ANLIEGEND
FILTER m30lo30hi30li30
User Login Raquet



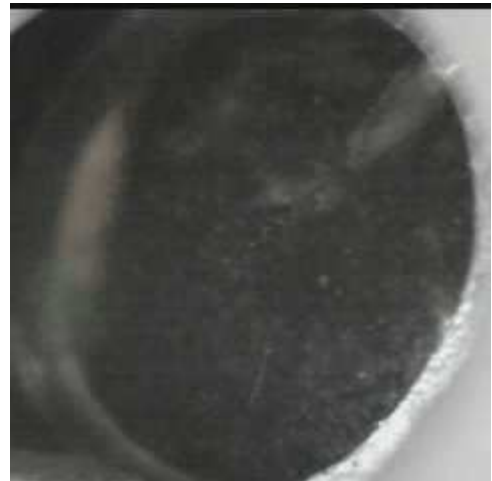
	ppm	±	Error
Ce	< LOD	:	123.298
La	< LOD	:	56.531
Ba	< LOD	:	61.624
Sb	< LOD	:	22.348
Sn	22.861	±	7.857
Cd	71.711	±	7.069
Ag	< LOD	:	7.013
Bal	795885.750	±	1068.791
Nb	< LOD	:	8.162
Zr	< LOD	:	27.053
Y	< LOD	:	6.116
Sr	221.757	±	6.177
Rb	< LOD	:	14.608
Th	< LOD	:	401.409
Bi	< LOD	:	391.113
Au	652.936	±	34.252
As	1193.172	±	48.553
Se	< LOD	:	13.635
Pb	3914.171	±	51.818
Hg	2033.021	±	29.786
Zn	299.893	±	19.645
Cu	408.555	±	22.490
Ni	< LOD	:	39.136
Co	< LOD	:	44.537
Fe	2640.680	±	91.250
Mn	< LOD	:	141.354
Cr	286.547	±	34.160
V	< LOD	:	106.179
Ti	9208.017	±	407.895
Ca	138920.063	±	1021.636
K	1995.579	±	161.395
Al	5562.739	±	993.765
P	7835.271	±	217.077
Si	12211.823	±	565.352
Cl	1351.844	±	41.082
S	15254.045	±	172.752
Mg	< LOD	:	15467.236

Supervised By: _____

Certificate of Verification

XL3t-69288

Reading No 12
Mode Mining
Time 2014-11-13 11:05
Duration 121.15
Units ppm
Sigma Value 2
Sequence Final
Flags
INV NR GM 1261
OBJEKT TAFELGEMAELDE
MATERIAL HOLZ METALL FASSUNG
ANALYSESTELLE P12 WAPPEN RECHTS
MESSAUFBAU STATIV ANLIEGEND
FILTER m30lo30hi30li30
User Login Raquet



	ppm	±	Error
Ce	< LOD	:	177.218
La	< LOD	:	81.577
Ba	< LOD	:	86.689
Sb	< LOD	:	38.113
Sn	1516.372	±	34.781
Cd	28.528	±	8.327
Ag	10.734	±	5.203
Bal	908297.813	±	728.925
Nb	41.042	±	17.378
Zr	< LOD	:	91.523
Y	< LOD	:	22.373
Sr	199.543	±	7.662
Rb	< LOD	:	42.332
Th	< LOD	:	1256.264
Bi	< LOD	:	1302.804
Au	< LOD	:	30.849
As	5780.838	±	166.780
Se	< LOD	:	18.785
Pb	25324.203	±	394.133
Hg	< LOD	:	17.772
Zn	37.416	±	15.564
Cu	10172.850	±	194.914
Ni	< LOD	:	48.226
Co	< LOD	:	36.387
Fe	346.587	±	55.958
Mn	< LOD	:	157.949
Cr	< LOD	:	32.424
V	< LOD	:	21.505
Ti	< LOD	:	113.704
Ca	10292.339	±	226.500
K	2213.202	±	151.126
Al	1138.246	±	501.067
P	1356.706	±	113.549
Si	11590.225	±	439.922
Cl	1847.431	±	46.873
S	19790.506	±	344.975
Mg	< LOD	:	10595.240

Supervised By: _____

Certificate of Verification

XL3t-69288

Reading No 13
Mode Mining
Time 2014-11-13 11:09
Duration 121.53
Units ppm
Sigma Value 2
Sequence Final
Flags
INV NR GM 1261
OBJEKT TAFELGEMAELEN
MATERIAL HOLZ METALL FASSUNG
ANALYSESTELLE P13 HELM REHTS
MESSAUFBAU STATIV ANLIEGEND
FILTER m30lo30hi30li30
User Login Raquet



	ppm	±	Error
Ce	< LOD	:	115.116
La	< LOD	:	52.850
Ba	< LOD	:	56.771
Sb	< LOD	:	19.454
Sn	< LOD	:	12.835
Cd	10.156	±	5.448
Ag	587.402	±	13.926
Bal	857842.000	±	723.044
Nb	< LOD	:	3.286
Zr	< LOD	:	13.106
Y	< LOD	:	2.744
Sr	251.168	±	4.970
Rb	< LOD	:	5.740
Th	< LOD	:	196.441
Bi	< LOD	:	165.890
Au	< LOD	:	7.662
As	301.141	±	22.163
Se	< LOD	:	4.068
Pb	988.748	±	19.365
Hg	< LOD	:	3.452
Zn	29.724	±	7.558
Cu	1114.912	±	31.064
Ni	< LOD	:	32.740
Co	< LOD	:	72.013
Fe	12399.135	±	172.909
Mn	< LOD	:	90.326
Cr	57.964	±	21.773
V	66.925	±	25.246
Ti	1698.486	±	151.471
Ca	90843.336	±	614.671
K	1921.009	±	197.573
Al	9311.705	±	944.215
P	254.469	±	92.262
Si	11353.213	±	470.702
Cl	6025.911	±	73.041
S	4942.483	±	80.378
Mg	< LOD	:	12881.785