

Certificate of Verification

XL3t-69288

Reading No 1
Mode Mining
Time 2014-04-11 14:23
Duration 121.93
Units ppm
Sigma Value 2
Sequence Final
Flags
INV NR GM240
OBJEKT TAFELEMAELDE
MATERIAL HOLZ FASSUNG METALL
ANALYSESTELLE P1 NIMGUS INNENSEITE
MESSAUFBAU STATIV ANLIEGEND
FILTER m30lo30hi30li30
User Login Raquet



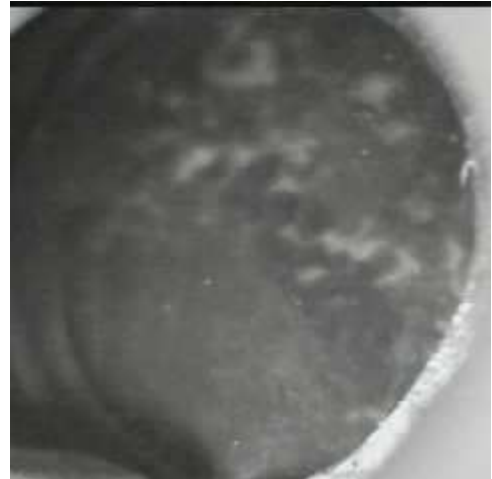
	ppm	±	Error
Ce	< LOD	:	103.281
La	< LOD	:	47.713
Ba	< LOD	:	51.527
Sb	< LOD	:	20.752
Sn	54.035	±	8.751
Cd	14.502	±	5.139
Ag	267.087	±	9.470
Bal	852237.563	±	744.383
Nb	18.078	±	5.208
Zr	< LOD	:	36.217
Y	< LOD	:	6.265
Sr	96.763	±	3.344
Rb	< LOD	:	12.614
Th	< LOD	:	409.006
Bi	< LOD	:	424.687
Au	302.297	±	18.110
As	1330.124	±	49.787
Se	< LOD	:	8.425
Pb	5127.670	±	59.509
Hg	31.550	±	6.987
Zn	71.552	±	9.121
Cu	396.584	±	20.177
Ni	< LOD	:	30.539
Co	< LOD	:	33.058
Fe	1458.884	±	63.874
Mn	< LOD	:	65.660
Cr	< LOD	:	23.519
V	< LOD	:	19.322
Ti	< LOD	:	103.480
Ca	92531.906	±	769.850
K	2187.792	±	154.567
Al	2523.243	±	659.254
P	5948.746	±	167.725
Si	18998.025	±	563.931
Cl	1595.900	±	38.337
S	14673.780	±	161.880
Mg	< LOD	:	14656.732

Supervised By: _____

Certificate of Verification

XL3t-69288

Reading No 2
Mode Mining
Time 2014-04-11 14:27
Duration 120.47
Units ppm
Sigma Value 2
Sequence Final
Flags
INV NR GM240
OBJEKT TAFELEMAELDE
MATERIAL HOLZ FASSUNG METALL
ANALYSESTELLE P2 NIMGUS INNENSEITE
MESSAUFBAU STATIV ANLIEGEND
FILTER m30lo30hi30li30
User Login Raquet



	ppm	±	Error
Ce	< LOD	:	99.654
La	< LOD	:	45.583
Ba	< LOD	:	49.039
Sb	< LOD	:	16.936
Sn	36.137	±	8.124
Cd	20.255	±	4.982
Ag	351.293	±	9.926
Bal	849118.500	±	781.059
Nb	11.973	±	5.814
Zr	< LOD	:	38.090
Y	< LOD	:	6.882
Sr	101.938	±	3.541
Rb	< LOD	:	22.219
Th	< LOD	:	463.308
Bi	< LOD	:	510.394
Au	340.698	±	19.748
As	1664.655	±	55.716
Se	< LOD	:	11.895
Pb	5855.112	±	69.914
Hg	< LOD	:	13.440
Zn	70.787	±	10.152
Cu	2104.875	±	45.958
Ni	< LOD	:	34.165
Co	156.889	±	29.887
Fe	1443.084	±	64.971
Mn	< LOD	:	68.250
Cr	< LOD	:	20.189
V	< LOD	:	21.387
Ti	< LOD	:	91.106
Ca	78991.859	±	720.953
K	2876.718	±	146.544
Al	3509.619	±	643.547
P	3909.152	±	142.749
Si	35283.301	±	736.448
Cl	1273.046	±	33.712
S	12774.644	±	153.234
Mg	< LOD	:	7873.607

Supervised By: _____

Certificate of Verification

XL3t-69288

Reading No 3
Mode Mining
Time 2014-04-11 14:30
Duration 121.85
Units ppm
Sigma Value 2
Sequence Final
Flags
INV NR GM240
OBJEKT TAFELEMAELDE
MATERIAL HOLZ FASSUNG METALL
ANALYSESTELLE P3 NIMGUS INNENSEITE
MESSAUFBAU STATIV ANLIEGEND
FILTER m30lo30hi30li30
User Login Raquet



	ppm	±	Error
Ce	< LOD	:	86.047
La	< LOD	:	39.266
Ba	< LOD	:	42.230
Sb	< LOD	:	23.338
Sn	49.417	±	7.269
Cd	16.030	±	4.277
Ag	294.523	±	8.347
Bal	872121.875	±	656.645
Nb	18.916	±	5.427
Zr	< LOD	:	43.381
Y	< LOD	:	6.513
Sr	64.588	±	2.850
Rb	< LOD	:	14.397
Th	< LOD	:	427.073
Bi	< LOD	:	499.421
Au	502.005	±	21.474
As	1352.397	±	51.435
Se	< LOD	:	13.025
Pb	5673.578	±	66.003
Hg	36.814	±	7.187
Zn	66.290	±	9.037
Cu	319.899	±	18.182
Ni	< LOD	:	29.488
Co	< LOD	:	31.290
Fe	1302.829	±	60.599
Mn	< LOD	:	66.599
Cr	19.995	±	13.224
V	< LOD	:	17.926
Ti	< LOD	:	84.590
Ca	63282.527	±	601.518
K	993.169	±	139.324
Al	3507.138	±	590.445
P	10998.810	±	205.336
Si	19281.734	±	534.444
Cl	1114.793	±	31.001
S	18917.643	±	205.205
Mg	< LOD	:	8339.810

Supervised By: _____

Certificate of Verification

XL3t-69288

Reading No 4
Mode Mining
Time 2014-04-11 14:36
Duration 121.09
Units ppm
Sigma Value 2
Sequence Final
Flags
INV NR GM240
OBJEKT TAFELEMAELDE
MATERIAL HOLZ FASSUNG METALL
ANALYSESTELLE P4 NIMGUS INNENSEITE
MESSAUFBAU STATIV ANLIEGEND
FILTER m30lo30hi30li30
User Login Raquet



	ppm	±	Error
Ce	< LOD	:	95.694
La	< LOD	:	44.115
Ba	< LOD	:	47.436
Sb	< LOD	:	16.328
Sn	33.494	±	8.274
Cd	16.174	±	4.752
Ag	465.877	±	11.275
Bal	855708.938	±	732.064
Nb	11.854	±	5.073
Zr	< LOD	:	32.320
Y	< LOD	:	6.016
Sr	122.010	±	3.678
Rb	< LOD	:	13.836
Th	< LOD	:	400.783
Bi	< LOD	:	421.817
Au	528.144	±	21.678
As	1180.319	±	47.715
Se	< LOD	:	8.514
Pb	4817.548	±	56.619
Hg	34.849	±	6.847
Zn	54.460	±	8.826
Cu	334.345	±	18.680
Ni	< LOD	:	29.756
Co	< LOD	:	30.266
Fe	1118.376	±	57.612
Mn	< LOD	:	68.562
Cr	< LOD	:	29.015
V	< LOD	:	25.333
Ti	< LOD	:	104.050
Ca	82683.828	±	703.958
K	568.359	±	162.239
Al	3150.652	±	758.284
P	11715.083	±	244.042
Si	12795.288	±	542.251
Cl	1659.090	±	43.613
S	23001.367	±	238.523
Mg	< LOD	:	10865.277

Supervised By: _____

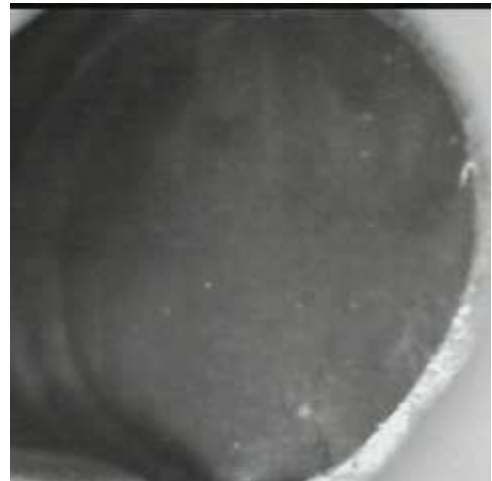


Thermo Fisher Scientific
 900 Middlesex Turnpike
 Billerica, MA 01821

Certificate of Verification

XL3t-69288

Reading No 5
 Mode Mining
 Time 2014-04-11 14:40
 Duration 120.83
 Units ppm
 Sigma Value 2
 Sequence Final
 Flags
 INV NR GM240
 OBJEKT TAFELEMAELDE
 MATERIAL HOLZ FASSUNG METALL
 ANALYSESTELLE P5 STERN INNENSEITE
 MESSAUFBAU STATIV ANLIEGEND
 FILTER m30lo30hi30li30
 User Login Raquet



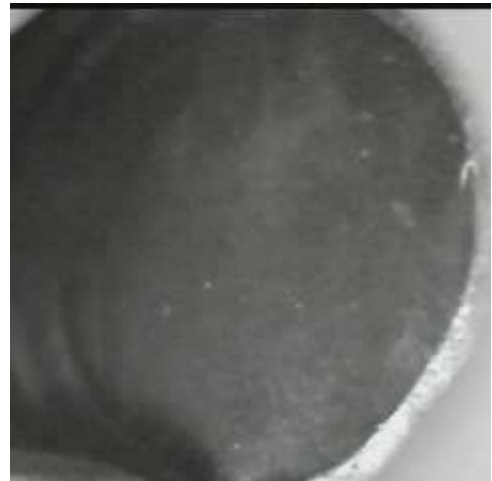
	ppm	±	Error
Ce	< LOD	:	122.208
La	< LOD	:	56.001
Ba	< LOD	:	60.178
Sb	42.686	±	14.992
Sn	16.929	±	9.475
Cd	12.427	±	5.687
Ag	425.781	±	12.574
Bal	654917.000	±	1750.628
Nb	< LOD	:	23.336
Zr	< LOD	:	123.353
Y	< LOD	:	10.853
Sr	83.137	±	3.857
Rb	215.038	±	23.561
Th	< LOD	:	1113.188
Bi	2371.002	±	567.530
Au	294.689	±	27.440
As	6328.688	±	120.063
Se	< LOD	:	22.659
Pb	453.618	±	21.942
Hg	< LOD	:	17.796
Zn	434.410	±	26.047
Cu	22797.271	±	377.914
Ni	2396.854	±	76.513
Co	9613.668	±	189.487
Fe	9777.491	±	201.283
Mn	125.746	±	56.400
Cr	< LOD	:	30.818
V	< LOD	:	34.220
Ti	1025.579	±	129.921
Ca	15632.546	±	293.437
K	27676.139	±	530.845
Al	9072.530	±	907.096
P	634.963	±	115.371
Si	220150.219	±	2676.488
Cl	869.717	±	28.969
S	6722.315	±	119.415
Mg	< LOD	:	8629.397

Supervised By: _____

Certificate of Verification

XL3t-69288

Reading No 6
Mode Mining
Time 2014-04-11 14:44
Duration 120.98
Units ppm
Sigma Value 2
Sequence Final
Flags
INV NR GM240
OBJEKT TAFELEMAELDE
MATERIAL HOLZ FASSUNG METALL
ANALYSESTELLE P6 STERN INNENSEITE
MESSAUFBAU STATIV ANLIEGEND
FILTER m30lo30hi30li30
User Login Raquet



	ppm	±	Error
Ce	< LOD	:	117.998
La	< LOD	:	54.028
Ba	< LOD	:	58.101
Sb	32.621	±	14.375
Sn	< LOD	:	12.953
Cd	16.969	±	5.643
Ag	533.207	±	13.767
Bal	684581.750	±	1597.603
Nb	< LOD	:	20.697
Zr	< LOD	:	100.327
Y	< LOD	:	8.777
Sr	65.075	±	3.309
Rb	161.328	±	19.032
Th	< LOD	:	903.260
Bi	1650.291	±	463.251
Au	526.126	±	29.016
As	4697.574	±	84.079
Se	< LOD	:	19.085
Pb	505.926	±	20.432
Hg	< LOD	:	15.093
Zn	478.783	±	27.060
Cu	28798.701	±	403.291
Ni	1742.228	±	62.087
Co	7337.615	±	143.687
Fe	8579.230	±	168.181
Mn	< LOD	:	125.408
Cr	< LOD	:	28.317
V	< LOD	:	42.701
Ti	870.535	±	116.059
Ca	14892.074	±	260.031
K	23270.066	±	437.198
Al	8138.074	±	789.427
P	627.241	±	101.249
Si	197968.672	±	2179.743
Cl	812.391	±	25.424
S	5789.781	±	93.797
Mg	7909.310	±	5140.818

Supervised By: _____

Certificate of Verification

XL3t-69288

Reading No 7
Mode Mining
Time 2014-04-11 14:51
Duration 121.99
Units ppm
Sigma Value 2
Sequence Final
Flags
INV NR GM240
OBJEKT TAFELEMAELDE
MATERIAL HOLZ FASSUNG METALL
ANALYSESTELLE P7 NIMBUS AUSSENSEITE
MESSAUFBAU STATIV ANLIEGEND
FILTER m30lo30hi30li30
User Login Raquet



	ppm	±	Error
Ce	< LOD	:	92.894
La	< LOD	:	42.430
Ba	< LOD	:	45.782
Sb	< LOD	:	18.484
Sn	124.558	±	9.027
Cd	23.335	±	4.801
Ag	320.106	±	9.157
Bal	890827.563	±	550.469
Nb	12.239	±	4.831
Zr	< LOD	:	33.563
Y	< LOD	:	5.607
Sr	117.878	±	3.430
Rb	< LOD	:	11.735
Th	< LOD	:	381.532
Bi	< LOD	:	417.020
Au	229.215	±	15.239
As	1340.058	±	45.997
Se	< LOD	:	10.026
Pb	4551.593	±	52.879
Hg	< LOD	:	5.682
Zn	73.757	±	8.328
Cu	293.308	±	17.324
Ni	< LOD	:	29.721
Co	< LOD	:	39.216
Fe	3025.823	±	85.115
Mn	< LOD	:	65.454
Cr	< LOD	:	24.808
V	< LOD	:	29.047
Ti	176.950	±	75.012
Ca	70419.320	±	617.826
K	4152.695	±	183.432
Al	1051.522	±	543.375
P	2624.629	±	122.269
Si	9378.961	±	414.080
Cl	2150.586	±	43.388
S	9073.645	±	116.965
Mg	< LOD	:	13220.316

Supervised By: _____

Certificate of Verification

XL3t-69288

Reading No 8
Mode Mining
Time 2014-04-11 14:54
Duration 122.19
Units ppm
Sigma Value 2
Sequence Final
Flags
INV NR GM240
OBJEKT TAFELEMAELDE
MATERIAL HOLZ FASSUNG METALL
ANALYSESTELLE P8 NIMBUS AUSSENSEITE
MESSAUFBAU STATIV ANLIEGEND
FILTER m30lo30hi30li30
User Login Raquet



	ppm	±	Error
Ce	< LOD	:	85.892
La	< LOD	:	39.449
Ba	< LOD	:	42.564
Sb	< LOD	:	15.907
Sn	85.019	±	8.844
Cd	21.103	±	4.467
Ag	606.440	±	12.312
Bal	880303.375	±	598.749
Nb	13.413	±	4.235
Zr	< LOD	:	27.612
Y	< LOD	:	4.692
Sr	97.548	±	3.128
Rb	< LOD	:	10.325
Th	< LOD	:	327.347
Bi	< LOD	:	323.063
Au	1055.259	±	27.449
As	918.501	±	38.407
Se	< LOD	:	7.908
Pb	3233.116	±	40.019
Hg	< LOD	:	5.715
Zn	73.413	±	9.420
Cu	84.789	±	12.491
Ni	< LOD	:	29.215
Co	< LOD	:	35.462
Fe	2247.891	±	74.009
Mn	< LOD	:	65.555
Cr	41.539	±	16.396
V	< LOD	:	22.274
Ti	129.226	±	66.291
Ca	80618.031	±	633.540
K	4709.245	±	198.322
Al	< LOD	:	926.894
P	10568.912	±	190.593
Si	5448.924	±	354.057
Cl	1820.168	±	38.410
S	7901.671	±	99.013
Mg	< LOD	:	7281.247

Supervised By: _____

Certificate of Verification

XL3t-69288

Reading No 9
Mode Mining
Time 2014-04-11 14:58
Duration 120.77
Units ppm
Sigma Value 2
Sequence Final
Flags
INV NR GM240
OBJEKT TAFELEMAELDE
MATERIAL HOLZ FASSUNG METALL
ANALYSESTELLE P9 KREUZ AUSSENSEITE
MESSAUFBAU STATIV ANLIEGEND
FILTER m30lo30hi30li30
User Login Raquet



	ppm	±	Error
Ce	< LOD	:	135.851
La	< LOD	:	62.659
Ba	< LOD	:	66.559
Sb	< LOD	:	23.786
Sn	94.147	±	12.529
Cd	20.094	±	6.370
Ag	725.704	±	17.780
Bal	899392.563	±	741.800
Nb	< LOD	:	14.567
Zr	< LOD	:	51.639
Y	< LOD	:	12.697
Sr	< LOD	:	16.277
Rb	< LOD	:	23.784
Th	< LOD	:	742.704
Bi	< LOD	:	668.754
Au	677.924	±	68.469
As	3051.486	±	91.321
Se	< LOD	:	24.090
Pb	8349.758	±	123.591
Hg	9220.901	±	122.718
Zn	537.446	±	37.253
Cu	191.609	±	22.032
Ni	< LOD	:	51.418
Co	< LOD	:	68.737
Fe	848.221	±	72.962
Mn	< LOD	:	163.775
Cr	< LOD	:	31.715
V	< LOD	:	31.513
Ti	< LOD	:	117.618
Ca	37862.793	±	503.254
K	4054.450	±	175.368
Al	952.027	±	517.845
P	4546.151	±	154.108
Si	6544.107	±	355.980
Cl	2398.327	±	48.562
S	20515.838	±	270.966
Mg	< LOD	:	9910.604

Certificate of Verification

XL3t-69288

Reading No 10
Mode Mining
Time 2014-04-11 15:02
Duration 121.01
Units ppm
Sigma Value 2
Sequence Final
Flags
INV NR GM240
OBJEKT TAFELEMAELDE
MATERIAL HOLZ FASSUNG METALL
ANALYSESTELLE P10 BROKAT AUSSENSEITE
MESSAUFBAU STATIV ANLIEGEND
FILTER m30lo30hi30li30
User Login Raquet



	ppm	±	Error
Ce	< LOD	:	85.891
La	< LOD	:	39.485
Ba	< LOD	:	42.583
Sb	< LOD	:	20.051
Sn	40.541	±	7.607
Cd	20.282	±	4.460
Ag	408.092	±	9.940
Bal	873051.688	±	581.026
Nb	12.063	±	3.288
Zr	< LOD	:	19.970
Y	< LOD	:	3.310
Sr	110.422	±	3.005
Rb	10.778	±	5.121
Th	< LOD	:	245.381
Bi	< LOD	:	249.466
Au	497.614	±	17.587
As	592.994	±	27.821
Se	< LOD	:	5.635
Pb	1931.369	±	26.052
Hg	< LOD	:	4.136
Zn	47.077	±	7.400
Cu	162.484	±	13.373
Ni	< LOD	:	26.454
Co	< LOD	:	29.335
Fe	1488.517	±	57.492
Mn	< LOD	:	58.742
Cr	33.462	±	15.581
V	< LOD	:	23.487
Ti	< LOD	:	96.414
Ca	99013.375	±	655.254
K	4541.265	±	178.941
Al	998.725	±	570.523
P	2581.116	±	119.643
Si	5680.825	±	350.719
Cl	2196.230	±	42.339
S	6489.897	±	88.470
Mg	< LOD	:	8058.582

Certificate of Verification

XL3t-69288

Reading No 11
Mode Mining
Time 2014-04-11 15:05
Duration 121.36
Units ppm
Sigma Value 2
Sequence Final
Flags
INV NR GM240
OBJEKT TAFELEMAELDE
MATERIAL HOLZ FASSUNG METALL
ANALYSESTELLE P11 WAPPEN AUSSENSEITE
MESSAUFBAU STATIV ANLIEGEND
FILTER m30lo30hi30li30
User Login Raquet



	ppm	±	Error
Ce	< LOD	:	189.690
La	< LOD	:	86.931
Ba	< LOD	:	92.176
Sb	< LOD	:	33.530
Sn	54.250	±	17.346
Cd	15.072	±	8.247
Ag	1199.494	±	30.990
Bal	879865.063	±	1104.911
Nb	79.287	±	29.154
Zr	< LOD	:	141.581
Y	< LOD	:	35.850
Sr	52.460	±	6.749
Rb	< LOD	:	71.112
Th	< LOD	:	1939.732
Bi	< LOD	:	1664.626
Au	514.311	±	48.782
As	7425.896	±	232.768
Se	< LOD	:	23.261
Pb	45210.434	±	738.472
Hg	< LOD	:	29.419
Zn	166.837	±	17.678
Cu	1194.167	±	49.807
Ni	< LOD	:	56.670
Co	< LOD	:	127.410
Fe	16723.475	±	370.233
Mn	< LOD	:	105.205
Cr	51.093	±	24.200
V	< LOD	:	37.758
Ti	< LOD	:	136.685
Ca	12736.012	±	285.493
K	6261.518	±	289.457
Al	1421.882	±	510.734
P	3436.568	±	127.439
Si	6534.148	±	331.407
Cl	5088.664	±	100.947
S	11969.398	±	222.631
Mg	< LOD	:	8193.189

Supervised By: _____

Certificate of Verification

XL3t-69288

Reading No 12
Mode Mining
Time 2014-04-11 15:09
Duration 120.30
Units ppm
Sigma Value 2
Sequence Final
Flags
INV NR GM240
OBJEKT TAFELEMAELDE
MATERIAL HOLZ FASSUNG METALL
ANALYSESTELLE P12 WAPPEN AUSSENSEITE
MESSAUFBAU STATIV ANLIEGEND
FILTER m30lo30hi30li30
User Login Raquet



	ppm	±	Error
Ce	< LOD	:	83.078
La	< LOD	:	38.113
Ba	< LOD	:	41.216
Sb	< LOD	:	24.391
Sn	30.863	±	7.683
Cd	17.848	±	4.287
Ag	522.643	±	11.335
Bal	906123.750	±	462.214
Nb	11.092	±	3.527
Zr	< LOD	:	24.014
Y	< LOD	:	3.665
Sr	82.064	±	2.752
Rb	14.160	±	5.675
Th	< LOD	:	265.578
Bi	< LOD	:	244.788
Au	989.862	±	25.230
As	666.069	±	30.281
Se	< LOD	:	6.702
Pb	2126.895	±	28.732
Hg	< LOD	:	5.149
Zn	66.678	±	8.993
Cu	354.404	±	17.808
Ni	< LOD	:	27.441
Co	< LOD	:	27.502
Fe	1029.360	±	51.983
Mn	< LOD	:	60.934
Cr	< LOD	:	38.733
V	< LOD	:	18.808
Ti	< LOD	:	140.820
Ca	68071.469	±	521.036
K	5515.152	±	191.663
Al	< LOD	:	1057.602
P	1870.977	±	98.380
Si	4422.690	±	293.185
Cl	2670.896	±	43.793
S	5413.130	±	76.608
Mg	< LOD	:	7203.435