

Institut für Kunsttechnik und Konservierung (IKK)
Kornmarkt 1
90402 Nürnberg

Certificate of Verification

XL3t-69288

Reading No 22
Mode Mining
Time 2014-10-02 11:17
Duration 120.61
Units ppm
Sigma Value 2
Sequence Final
Flags
INV NR GM 198
OBJEKT TAFELGEMAELEN
MATERIAL HOLZ FASSUNG METALL
ANALYSESTELLE P1 BLATTWERK
MESSAUFBAU STATIV ANLIEGEND
FILTER m30lo30hi30li30
User Login Raquet



	ppm	±	Error
Ce	< LOD	:	126.763
La	< LOD	:	58.333
Ba	< LOD	:	62.530
Sb	< LOD	:	21.558
Sn	< LOD	:	14.432
Cd	< LOD	:	8.747
Ag	809.136	±	17.097
Bal	778322.063	±	1091.917
Nb	< LOD	:	2.382
Zr	< LOD	:	8.587
Y	< LOD	:	1.596
Sr	385.460	±	6.553
Rb	8.396	±	3.482
Th	< LOD	:	124.493
Bi	< LOD	:	100.884
Au	1217.202	±	30.344
As	26.312	±	8.218
Se	< LOD	:	5.828
Pb	92.027	±	6.762
Hg	11.595	±	3.651
Zn	72.092	±	10.778
Cu	408.339	±	21.396
Ni	< LOD	:	35.486
Co	< LOD	:	65.391
Fe	8933.896	±	150.318
Mn	< LOD	:	85.308
Cr	81.172	±	22.033
V	36.738	±	23.869
Ti	770.967	±	134.905
Ca	143660.047	±	852.726
K	4656.254	±	233.039
Al	6850.294	±	1084.868
P	10534.877	±	229.700
Si	31949.486	±	820.166
Cl	5528.261	±	74.884
S	5638.696	±	93.487
Mg	< LOD	:	13066.239

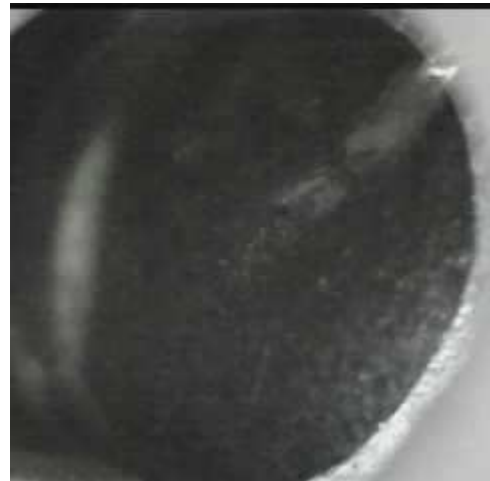
Supervised By: _____

Institut für Kunsttechnik und Konservierung (IKK)
Kornmarkt 1
90402 Nürnberg

Certificate of Verification

XL3t-69288

Reading No 23
Mode Mining
Time 2014-10-02 11:27
Duration 121.51
Units ppm
Sigma Value 2
Sequence Final
Flags
INV NR GM 198
OBJEKT TAFELGEMAELEN
MATERIAL HOLZ FASSUNG METALL
ANALYSESTELLE P2 SCHWARZZEICHNUNG
MESSAUFBAU STATIV ANLIEGEND
FILTER m30lo30hi30li30
User Login Raquet



	ppm	±	Error
Ce	< LOD	:	158.684
La	< LOD	:	73.158
Ba	< LOD	:	78.716
Sb	46.989	±	19.052
Sn	< LOD	:	17.904
Cd	< LOD	:	12.078
Ag	933.254	±	21.786
Bal	818826.813	±	1206.120
Nb	< LOD	:	4.049
Zr	< LOD	:	18.568
Y	< LOD	:	3.110
Sr	316.881	±	8.082
Rb	13.425	±	5.177
Th	< LOD	:	210.295
Bi	< LOD	:	193.170
Au	694.068	±	32.249
As	742.949	±	27.346
Se	< LOD	:	7.379
Pb	307.557	±	15.415
Hg	< LOD	:	9.946
Zn	< LOD	:	60.242
Cu	78768.391	±	631.446
Ni	< LOD	:	44.273
Co	< LOD	:	64.071
Fe	6385.325	±	131.081
Mn	219.821	±	62.459
Cr	< LOD	:	32.096
V	< LOD	:	47.761
Ti	374.287	±	145.102
Ca	45665.734	±	424.534
K	9012.360	±	256.521
Al	4211.512	±	681.864
P	934.145	±	81.727
Si	25688.160	±	560.816
Cl	2649.887	±	41.479
S	4200.910	±	63.604
Mg	< LOD	:	9708.582

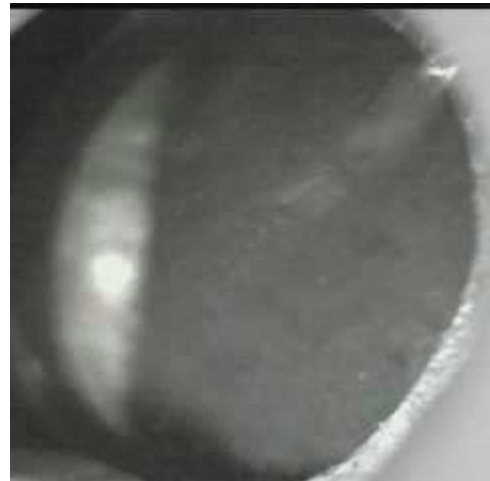
Supervised By: _____

Institut für Kunsttechnik und Konservierung (IKK)
Kornmarkt 1
90402 Nürnberg

Certificate of Verification

XL3t-69288

Reading No 24
Mode Mining
Time 2014-10-02 11:31
Duration 122.21
Units ppm
Sigma Value 2
Sequence Final
Flags
INV NR GM 198
OBJEKT TAFELGEMAELEN
MATERIAL HOLZ FASSUNG METALL
ANALYSESTELLE P3 MANTEL
MESSAUFBAU STATIV ANLIEGEND
FILTER m30lo30hi30li30
User Login Raquet



	ppm	±	Error
Ce	< LOD	:	371.156
La	< LOD	:	230.868
Ba	< LOD	:	294.585
Sb	112.269	±	40.944
Sn	< LOD	:	35.372
Cd	< LOD	:	19.224
Ag	< LOD	:	12.003
Bal	759595.813	±	2895.157
Nb	105.934	±	53.009
Zr	< LOD	:	248.297
Y	< LOD	:	66.228
Sr	126.583	±	12.811
Rb	< LOD	:	129.107
Th	< LOD	:	3312.930
Bi	< LOD	:	2554.814
Au	< LOD	:	73.376
As	10875.092	±	395.085
Se	< LOD	:	51.454
Pb	75081.914	±	1553.481
Hg	< LOD	:	45.583
Zn	258.198	±	43.024
Cu	44769.328	±	809.889
Ni	< LOD	:	108.254
Co	< LOD	:	65.771
Fe	908.886	±	94.956
Mn	< LOD	:	145.302
Cr	< LOD	:	48.335
V	< LOD	:	43.607
Ti	< LOD	:	324.604
Ca	2850.769	±	137.137
K	2612.524	±	197.772
Al	3935.478	±	831.640
P	1789.042	±	136.478
Si	49463.316	±	1181.575
Cl	5412.983	±	123.307
S	25628.111	±	516.257
Mg	16018.523	±	8801.750

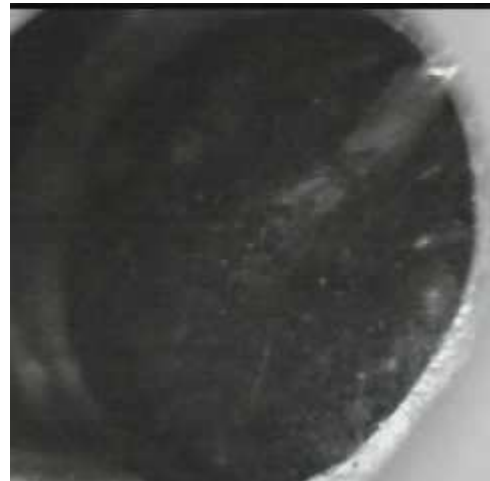
Supervised By: _____

Institut für Kunsttechnik und Konservierung (IKK)
Kornmarkt 1
90402 Nürnberg

Certificate of Verification

XL3t-69288

Reading No 25
Mode Mining
Time 2014-10-02 11:36
Duration 120.25
Units ppm
Sigma Value 2
Sequence Final
Flags
INV NR GM 198
OBJEKT TAFELGEMAELEN
MATERIAL HOLZ FASSUNG METALL
ANALYSESTELLE P4 GEWAND
MESSAUFBAU STATIV ANLIEGEND
FILTER m30lo30hi30li30
User Login Raquet



	ppm	±	Error
Ce	< LOD	:	256.517
La	< LOD	:	116.957
Ba	< LOD	:	124.776
Sb	206.812	±	31.734
Sn	< LOD	:	22.158
Cd	< LOD	:	13.326
Ag	< LOD	:	8.762
Bal	780834.438	±	2023.021
Nb	< LOD	:	39.029
Zr	< LOD	:	151.227
Y	< LOD	:	34.965
Sr	202.274	±	10.640
Rb	< LOD	:	63.360
Th	< LOD	:	1923.297
Bi	< LOD	:	1873.733
Au	< LOD	:	47.353
As	1951.941	±	205.135
Se	< LOD	:	29.596
Pb	31708.340	±	583.697
Hg	< LOD	:	33.876
Zn	378.757	±	52.442
Cu	102714.836	±	1472.911
Ni	< LOD	:	58.966
Co	< LOD	:	61.883
Fe	2624.245	±	108.306
Mn	< LOD	:	105.356
Cr	< LOD	:	40.284
V	< LOD	:	44.191
Ti	742.519	±	164.141
Ca	12006.673	±	260.830
K	10573.742	±	334.281
Al	5020.875	±	757.013
P	803.745	±	89.406
Si	36229.406	±	805.979
Cl	4369.632	±	79.607
S	9489.956	±	162.470
Mg	< LOD	:	10318.166

Supervised By: _____