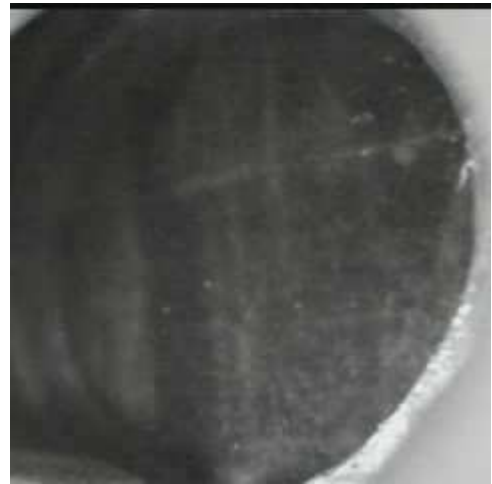


RFAnalyse-Zertifikat

XL3t-69288

Reading No 1
Mode Mining
Time 2014-05-13 10:55
Duration 122.25
Units ppm
Sigma Value 2
Sequence Final
Flags
INV NR GNM GM 152
OBJEKT Tafelgemaelde
MATERIAL Holz Fassung Metall
ANALYSESTELLE P1 Schwert
MESSAUFBAU STATIV anliegend
FILTER 30 30 30 30
User Login Stein



	ppm	±	Error
Ce	< LOD	:	169.038
La	< LOD	:	77.543
Ba	< LOD	:	82.971
Sb	< LOD	:	35.192
Sn	< LOD	:	23.563
Cd	< LOD	:	15.507
Ag	39.206	±	6.026
Bal	872851.500	±	939.647
Nb	< LOD	:	25.993
Zr	< LOD	:	89.982
Y	< LOD	:	21.879
Sr	198.333	±	7.506
Rb	< LOD	:	44.134
Th	< LOD	:	1277.972
Bi	< LOD	:	1101.962
Au	< LOD	:	31.838
As	5310.134	±	158.239
Se	< LOD	:	18.840
Pb	24472.203	±	365.715
Hg	< LOD	:	18.073
Zn	< LOD	:	32.097
Cu	21895.209	±	343.816
Ni	< LOD	:	45.821
Co	< LOD	:	60.323
Fe	650.445	±	61.418
Mn	< LOD	:	98.868
Cr	< LOD	:	28.271
V	< LOD	:	28.456
Ti	< LOD	:	127.861
Ca	28538.674	±	437.915
K	3140.803	±	162.917
Al	3619.566	±	600.119
P	4375.580	±	148.861
Si	11999.341	±	435.627
Cl	2032.696	±	45.273
S	20765.816	±	312.427
Mg	< LOD	:	8773.838

RFAnalyse-Zertifikat

XL3t-69288

Reading No **2**
 Mode Mining
 Time 2014-05-13 11:06
 Duration 120.72
 Units ppm
 Sigma Value 2
 Sequence Final
 Flags 3mm
 INV NR GNM GM 152
 OBJEKT Tafelgemaelde
 MATERIAL Holz Fassung Metall
 ANALYSESTELLE P1 Schwert
 MESSAUFBAU STATIV anliegend
 FILTER 30 30 30 30
 User Login Stein



	ppm	±	Error
Ce	< LOD	:	157.558
La	< LOD	:	128.119
Ba	< LOD	:	134.504
Sb	< LOD	:	47.508
Sn	< LOD	:	30.995
Cd	< LOD	:	16.810
Ag	73.028	±	12.472
Bal	830933.375	±	1474.460
Nb	< LOD	:	18.728
Zr	< LOD	:	57.806
Y	< LOD	:	13.434
Sr	246.297	±	9.468
Rb	< LOD	:	25.622
Th	< LOD	:	817.940
Bi	< LOD	:	805.976
Au	< LOD	:	26.721
As	1926.654	±	96.891
Se	< LOD	:	16.688
Pb	7433.235	±	142.210
Hg	< LOD	:	15.291
Zn	224.922	±	21.645
Cu	542.384	±	40.449
Ni	< LOD	:	53.133
Co	< LOD	:	66.975
Fe	676.896	±	88.951
Mn	< LOD	:	142.242
Cr	< LOD	:	39.723
V	< LOD	:	47.092
Ti	< LOD	:	204.751
Ca	118553.594	±	1609.976
K	3089.949	±	219.994
Al	2914.261	±	787.846
P	6598.117	±	218.640
Si	9240.872	±	542.116
Cl	2219.331	±	67.627
S	15297.351	±	247.833
Mg	< LOD	:	11207.075

RFAnalyse-Zertifikat

XL3t-69288

Reading No **3**
 Mode Mining
 Time 2014-05-13 11:10
 Duration 120.57
 Units ppm
 Sigma Value 2
 Sequence Final
 Flags 3mm
 INV NR GNM GM 152
 OBJEKT Tafelgemaelde
 MATERIAL Holz Fassung Metall
 ANALYSESTELLE P2 SCHWERT Ueberversilberung
 MESSAUFBAU STATIV anliegend
 FILTER 30 30 30 30
 User Login Stein

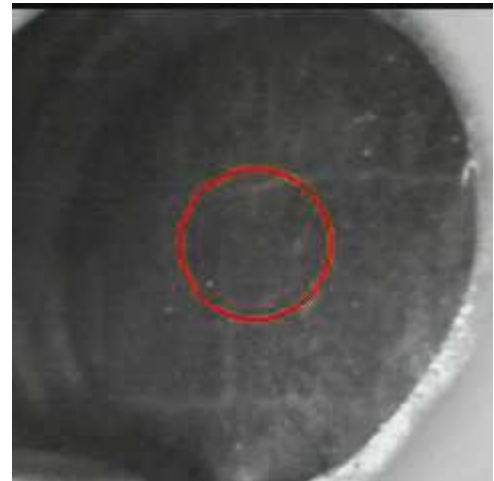


	ppm	±	Error
Ce	< LOD	:	138.942
La	< LOD	:	114.022
Ba	< LOD	:	120.013
Sb	< LOD	:	57.910
Sn	< LOD	:	43.024
Cd	22.883	±	11.958
Ag	1007.215	±	36.625
Bal	887444.375	±	1037.240
Nb	< LOD	:	10.000
Zr	< LOD	:	39.135
Y	< LOD	:	8.810
Sr	245.753	±	8.919
Rb	< LOD	:	22.091
Th	< LOD	:	553.518
Bi	< LOD	:	488.666
Au	< LOD	:	17.016
As	939.987	±	64.453
Se	< LOD	:	14.004
Pb	3566.614	±	76.320
Hg	< LOD	:	10.587
Zn	1707.364	±	58.556
Cu	98.999	±	22.678
Ni	< LOD	:	50.707
Co	< LOD	:	59.004
Fe	849.056	±	93.868
Mn	< LOD	:	148.449
Cr	83.675	±	26.831
V	< LOD	:	58.757
Ti	< LOD	:	277.350
Ca	66005.336	±	918.365
K	2374.630	±	294.091
Al	1807.035	±	712.766
P	4540.448	±	188.876
Si	9252.393	±	542.258
Cl	4998.059	±	109.805
S	15056.129	±	237.991
Mg	< LOD	:	11477.822

RFAlyse-Zertifikat

XL3t-69288

Reading No **4**
 Mode Mining
 Time 2014-05-13 11:17
 Duration 121.12
 Units ppm
 Sigma Value 2
 Sequence Final
 Flags 3mm
 INV NR GNM GM 152
 OBJEKT Tafelgemaelde
 MATERIAL Holz Fassung Metall
 ANALYSESTELLE P3 rechts vom Schwert
 MESSAUFBAU STATIV anliegend
 FILTER 30 30 30 30
 User Login Stein



	ppm	±	Error
Ce	< LOD	:	219.154
La	< LOD	:	180.940
Ba	< LOD	:	195.062
Sb	< LOD	:	67.969
Sn	49.750	±	29.481
Cd	< LOD	:	34.346
Ag	< LOD	:	13.685
Bal	851545.500	±	1611.153
Nb	< LOD	:	41.012
Zr	< LOD	:	139.522
Y	< LOD	:	34.879
Sr	169.643	±	10.506
Rb	< LOD	:	77.407
Th	< LOD	:	1890.734
Bi	< LOD	:	1735.256
Au	< LOD	:	50.075
As	5586.674	±	225.129
Se	< LOD	:	41.105
Pb	30879.680	±	636.310
Hg	< LOD	:	30.328
Zn	< LOD	:	46.597
Cu	28523.488	±	588.519
Ni	< LOD	:	61.250
Co	< LOD	:	80.825
Fe	698.792	±	90.152
Mn	< LOD	:	143.859
Cr	< LOD	:	40.222
V	< LOD	:	34.402
Ti	< LOD	:	154.263
Ca	17166.471	±	400.921
K	3053.724	±	208.146
Al	3718.891	±	772.982
P	4863.901	±	204.561
Si	13587.523	±	626.992
Cl	3302.083	±	94.738
S	23088.344	±	471.780
Mg	13592.033	±	8176.994

RFAlyse-Zertifikat

XL3t-69288

Reading No **5**
 Mode Mining
 Time 2014-05-13 11:23
 Duration 120.83
 Units ppm
 Sigma Value 2
 Sequence Final
 Flags
 INV NR GNM GM 152
 OBJEKT Tafelgemaelde
 MATERIAL Holz Fassung Metall
 ANALYSESTELLE P4 Buchbeschlag
 MESSAUFBAU STATIV anliegend
 FILTER 30 30 30 30
 User Login Stein



	ppm	±	Error
Ce	< LOD	:	112.974
La	< LOD	:	52.089
Ba	< LOD	:	55.766
Sb	< LOD	:	25.934
Sn	296.088	±	13.135
Cd	17.207	±	5.459
Ag	554.566	±	13.131
Bal	865916.813	±	736.554
Nb	< LOD	:	15.213
Zr	< LOD	:	36.583
Y	< LOD	:	8.150
Sr	241.894	±	5.654
Rb	< LOD	:	22.019
Th	< LOD	:	540.176
Bi	< LOD	:	479.950
Au	558.407	±	24.482
As	1909.418	±	64.215
Se	< LOD	:	10.789
Pb	7202.680	±	86.225
Hg	< LOD	:	8.255
Zn	51.202	±	8.978
Cu	236.268	±	18.101
Ni	< LOD	:	35.736
Co	< LOD	:	29.975
Fe	580.362	±	50.363
Mn	< LOD	:	78.132
Cr	37.268	±	16.666
V	< LOD	:	20.277
Ti	< LOD	:	105.526
Ca	90897.039	±	841.544
K	2146.349	±	167.044
Al	1622.760	±	603.472
P	5215.309	±	156.381
Si	6499.990	±	370.931
Cl	2640.315	±	48.903
S	13375.990	±	160.979
Mg	< LOD	:	9233.248

RFAnalyse-Zertifikat

XL3t-69288

Reading No **6**
 Mode Mining
 Time 2014-05-13 11:29
 Duration 121.17
 Units ppm
 Sigma Value 2
 Sequence Final
 Flags
 INV NR GNM GM 152
 OBJEKT Tafelgemaelde
 MATERIAL Holz Fassung Metall
 ANALYSESTELLE P5 Kelch BARBARA
 MESSAUFBAU STATIV anliegend
 FILTER 30 30 30 30
 User Login Stein



	ppm	±	Error
Ce	< LOD	:	112.129
La	< LOD	:	51.386
Ba	< LOD	:	55.192
Sb	< LOD	:	23.749
Sn	189.154	±	11.460
Cd	16.431	±	5.355
Ag	497.512	±	12.295
Bal	896041.250	±	585.159
Nb	< LOD	:	9.400
Zr	< LOD	:	33.837
Y	< LOD	:	7.460
Sr	215.665	±	5.219
Rb	< LOD	:	21.394
Th	< LOD	:	499.101
Bi	< LOD	:	442.424
Au	646.732	±	25.480
As	1950.737	±	60.608
Se	< LOD	:	10.237
Pb	6359.915	±	76.764
Hg	< LOD	:	8.532
Zn	49.454	±	8.969
Cu	259.405	±	18.313
Ni	< LOD	:	34.797
Co	< LOD	:	33.199
Fe	1022.663	±	59.495
Mn	< LOD	:	77.152
Cr	27.972	±	16.468
V	< LOD	:	19.789
Ti	< LOD	:	145.315
Ca	58890.852	±	592.528
K	3547.902	±	166.736
Al	1572.492	±	555.902
P	5285.239	±	159.220
Si	8288.106	±	405.276
Cl	1257.866	±	35.498
S	13873.474	±	170.666
Mg	< LOD	:	12989.563

RFAnalyse-Zertifikat

XL3t-69288

Reading No **7**
 Mode Mining
 Time 2014-05-13 11:33
 Duration 120.63
 Units ppm
 Sigma Value 2
 Sequence Final
 Flags
 INV NR GNM GM 152
 OBJEKT Tafelgemaelde
 MATERIAL Holz Fassung Metall
 ANALYSESTELLE P6 Kelch BARBARA
 MESSAUFBAU STATIV anliegend
 FILTER 30 30 30 30
 User Login Stein



	ppm	±	Error
Ce	< LOD	:	133.168
La	< LOD	:	60.768
Ba	< LOD	:	65.426
Sb	< LOD	:	23.913
Sn	305.921	±	14.831
Cd	11.659	±	6.066
Ag	584.553	±	14.882
Bal	886440.438	±	707.865
Nb	< LOD	:	18.816
Zr	< LOD	:	46.047
Y	< LOD	:	10.651
Sr	250.674	±	6.513
Rb	< LOD	:	22.021
Th	< LOD	:	669.954
Bi	< LOD	:	609.268
Au	2877.889	±	60.182
As	2821.831	±	82.113
Se	< LOD	:	14.911
Pb	9305.156	±	120.984
Hg	< LOD	:	12.315
Zn	2004.056	±	45.628
Cu	410.747	±	23.738
Ni	< LOD	:	39.440
Co	< LOD	:	36.133
Fe	988.427	±	64.438
Mn	< LOD	:	93.316
Cr	92.224	±	18.872
V	< LOD	:	41.403
Ti	< LOD	:	263.185
Ca	35090.180	±	440.916
K	1644.591	±	135.801
Al	1895.091	±	557.197
P	23649.957	±	356.700
Si	7596.708	±	423.571
Cl	1722.079	±	39.906
S	22289.324	±	282.694
Mg	< LOD	:	12097.961

RFAnalyse-Zertifikat

XL3t-69288

Reading No **8**
 Mode Mining
 Time 2014-05-13 11:39
 Duration 120.23
 Units ppm
 Sigma Value 2
 Sequence Final
 Flags
 INV NR GNM GM 152
 OBJEKT Tafelgemaelde
 MATERIAL Holz Fassung Metall
 ANALYSESTELLE P7 Borte Bartholomaeus
 MESSAUFBAU STATIV anliegend
 FILTER 30 30 30 30
 User Login Stein



	ppm	±	Error
Ce	< LOD	:	125.444
La	< LOD	:	57.583
Ba	< LOD	:	61.937
Sb	< LOD	:	33.583
Sn	425.864	±	15.759
Cd	17.287	±	5.936
Ag	586.797	±	14.339
Bal	893339.875	±	652.830
Nb	< LOD	:	13.037
Zr	< LOD	:	46.863
Y	< LOD	:	10.623
Sr	225.400	±	6.003
Rb	< LOD	:	27.003
Th	< LOD	:	684.117
Bi	< LOD	:	619.909
Au	603.722	±	28.088
As	2544.724	±	82.221
Se	< LOD	:	12.827
Pb	10247.939	±	130.851
Hg	< LOD	:	10.386
Zn	2004.502	±	44.662
Cu	141.007	±	16.814
Ni	< LOD	:	37.989
Co	< LOD	:	34.152
Fe	839.479	±	60.174
Mn	< LOD	:	93.841
Cr	77.694	±	17.951
V	< LOD	:	51.930
Ti	< LOD	:	272.151
Ca	49473.039	±	585.800
K	2174.055	±	151.193
Al	2011.898	±	571.833
P	2875.937	±	135.510
Si	10074.076	±	419.862
Cl	3692.839	±	63.277
S	18632.848	±	242.243
Mg	< LOD	:	10851.276

RFAnalyse-Zertifikat

XL3t-69288


Reading No **9**
 Mode Mining
 Time 2014-05-13 11:46
 Duration 121.56
 Units ppm
 Sigma Value 2
 Sequence Final
 Flags
 INV NR GNM GM 152
 OBJEKT Tafelgemaelde
 MATERIAL Holz Fassung Metall
 ANALYSESTELLE P8 schwertgriff
 MESSAUFBAU STATIV anliegend
 FILTER 30 30 30 30
 User Login Stein



	ppm	±	Error
Ce	< LOD	:	107.018
La	< LOD	:	48.999
Ba	< LOD	:	52.971
Sb	< LOD	:	18.105
Sn	124.582	±	9.683
Cd	9.888	±	5.034
Ag	262.100	±	8.862
Bal	889589.625	±	597.556
Nb	< LOD	:	8.490
Zr	< LOD	:	30.446
Y	< LOD	:	6.673
Sr	223.438	±	5.132
Rb	< LOD	:	19.639
Th	< LOD	:	450.620
Bi	< LOD	:	423.372
Au	410.950	±	20.545
As	1632.430	±	54.142
Se	< LOD	:	9.254
Pb	5401.366	±	64.915
Hg	< LOD	:	7.665
Zn	1454.519	±	32.501
Cu	215.141	±	16.869
Ni	< LOD	:	33.495
Co	< LOD	:	29.832
Fe	1005.566	±	57.670
Mn	< LOD	:	81.109
Cr	53.401	±	18.915
V	< LOD	:	43.090
Ti	< LOD	:	309.306
Ca	67953.203	±	636.791
K	1899.667	±	143.322
Al	1361.841	±	504.019
P	3190.304	±	125.367
Si	7713.591	±	352.516
Cl	2197.123	±	40.904
S	15293.405	±	169.385
Mg	< LOD	:	8272.046

RFAnalyse-Zertifikat

XL3t-69288


Reading No 1 
 Mode Mining
 Time 2014-05-13 11:52
 Duration 120.55
 Units ppm
 Sigma Value 2
 Sequence Final
 Flags
 INV NR GNM GM 152
 OBJEKT Tafelgemaelde
 MATERIAL Holz Fassung Metall
 ANALYSESTELLE P9 Rost Laurentius
 MESSAUFBAU STATIV anliegend
 FILTER 30 30 30 30
 User Login Stein



	ppm	±	Error
Ce	< LOD	:	194.280
La	< LOD	:	88.511
Ba	< LOD	:	94.465
Sb	< LOD	:	30.832
Sn	9327.651	±	141.095
Cd	112.647	±	11.914
Ag	631.997	±	19.340
Bal	893220.375	±	923.514
Nb	46.734	±	21.151
Zr	< LOD	:	107.013
Y	< LOD	:	25.645
Sr	84.568	±	6.037
Rb	< LOD	:	51.617
Th	< LOD	:	1496.433
Bi	< LOD	:	1175.038
Au	125.395	±	33.669
As	5829.681	±	181.778
Se	< LOD	:	20.434
Pb	29893.920	±	469.254
Hg	< LOD	:	20.505
Zn	568.987	±	27.453
Cu	1231.788	±	48.583
Ni	< LOD	:	54.469
Co	< LOD	:	46.736
Fe	850.071	±	77.777
Mn	< LOD	:	138.946
Cr	< LOD	:	29.119
V	< LOD	:	30.908
Ti	< LOD	:	160.741
Ca	15139.739	±	315.784
K	1943.562	±	189.940
Al	1910.791	±	562.111
P	3156.510	±	143.815
Si	10207.966	±	427.821
Cl	2909.614	±	65.641
S	22788.514	±	402.789
Mg	< LOD	:	8683.648

RFAnalyse-Zertifikat

XL3t-69288

Reading No 1 
 Mode Mining
 Time 2014-05-13 12:00
 Duration 121.57
 Units ppm
 Sigma Value 2
 Sequence Final
 Flags
 INV NR GNM GM 152
 OBJEKT Tafelgemaelde
 MATERIAL Holz Fassung Metall
 ANALYSESTELLE P10 ROST Laurentius
 MESSAUFBAU STATIV anliegend
 FILTER 30 30 30 30
 User Login Stein



	ppm	±	Error
Ce	< LOD	:	234.976
La	< LOD	:	106.777
Ba	< LOD	:	112.886
Sb	< LOD	:	43.348
Sn	13682.137	±	231.954
Cd	147.510	±	14.920
Ag	489.753	±	19.045
Bal	843856.125	±	1535.773
Nb	89.618	±	32.296
Zr	< LOD	:	155.174
Y	< LOD	:	38.248
Sr	64.079	±	7.373
Rb	< LOD	:	78.615
Th	< LOD	:	2289.028
Bi	< LOD	:	1641.081
Au	< LOD	:	55.583
As	7544.154	±	249.484
Se	< LOD	:	23.670
Pb	48873.645	±	833.481
Hg	< LOD	:	27.663
Zn	552.823	±	28.876
Cu	437.298	±	33.437
Ni	< LOD	:	65.874
Co	< LOD	:	60.050
Fe	1804.291	±	111.730
Mn	< LOD	:	128.277
Cr	45.186	±	22.581
V	< LOD	:	40.131
Ti	< LOD	:	177.582
Ca	18309.715	±	403.923
K	1571.363	±	198.888
Al	3005.486	±	662.118
P	3813.589	±	162.728
Si	13895.316	±	512.338
Cl	2815.300	±	69.084
S	28507.840	±	551.730
Mg	< LOD	:	10698.832

RFAnalyse-Zertifikat

XL3t-69288

Reading No **12**
 Mode Mining
 Time 2014-05-13 12:06
 Duration 122.20
 Units ppm
 Sigma Value 2
 Sequence Final
 Flags
 INV NR GNM GM 152
 OBJEKT Tafelgemaelde
 MATERIAL Holz Fassung Metall
 ANALYSESTELLE P11 Pressbrokat Barbara
 MESSAUFBAU STATIV anliegend
 FILTER 30 30 30 30
 User Login Stein



	ppm	±	Error
Ce	< LOD	:	196.049
La	< LOD	:	90.026
Ba	< LOD	:	96.130
Sb	< LOD	:	38.649
Sn	105.863	±	14.324
Cd	< LOD	:	14.784
Ag	117.351	±	9.577
Bal	830851.313	±	1456.420
Nb	< LOD	:	52.867
Zr	< LOD	:	114.985
Y	< LOD	:	29.357
Sr	59.181	±	11.546
Rb	< LOD	:	61.841
Th	< LOD	:	1729.644
Bi	< LOD	:	1258.789
Au	< LOD	:	100.535
As	8281.819	±	218.092
Se	< LOD	:	22.594
Pb	29475.678	±	500.503
Hg	7013.294	±	126.108
Zn	480.248	±	37.233
Cu	229.146	±	26.729
Ni	< LOD	:	59.760
Co	< LOD	:	77.317
Fe	4851.089	±	174.461
Mn	< LOD	:	132.643
Cr	< LOD	:	69.654
V	< LOD	:	71.379
Ti	1452.237	±	258.705
Ca	63067.914	±	977.220
K	4023.598	±	212.020
Al	4990.765	±	782.440
P	7480.344	±	209.836
Si	16412.756	±	575.543
Cl	2466.625	±	58.038
S	18507.086	±	312.819
Mg	< LOD	:	13560.325

RFAnalyse-Zertifikat

XL3t-69288



Reading No 1
Mode Mining
Time 2014-05-13 12:15
Duration 121.11
Units ppm
Sigma Value 2
Sequence Final
Flags
INV NR GNM GM 152
OBJEKT Tafelgemaelde
MATERIAL Holz Fassung Metall
ANALYSESTELLE P12 Schuh Barbara
MESSAUFBAU STATIV anliegend
FILTER 30 30 30 30
User Login Stein



	ppm	±	Error
Ce	< LOD	:	94.893
La	< LOD	:	43.634
Ba	< LOD	:	46.805
Sb	< LOD	:	17.325
Sn	28.209	±	6.396
Cd	16.423	±	4.638
Ag	4.919	±	2.940
Bal	825182.625	±	858.784
Nb	10.806	±	5.637
Zr	< LOD	:	30.221
Y	< LOD	:	6.739
Sr	141.122	±	4.160
Rb	< LOD	:	17.425
Th	< LOD	:	449.346
Bi	< LOD	:	407.691
Au	< LOD	:	17.901
As	1716.310	±	54.456
Se	< LOD	:	9.558
Pb	5770.808	±	65.464
Hg	331.476	±	11.483
Zn	59.891	±	8.941
Cu	128.026	±	14.207
Ni	< LOD	:	31.508
Co	< LOD	:	36.467
Fe	2152.842	±	75.862
Mn	< LOD	:	73.283
Cr	< LOD	:	38.001
V	< LOD	:	24.961
Ti	< LOD	:	134.951
Ca	121193.523	±	934.165
K	1567.710	±	125.011
Al	4202.161	±	802.431
P	2555.283	±	150.246
Si	16037.328	±	560.062
Cl	1284.612	±	36.328
S	17600.586	±	187.048
Mg	< LOD	:	14354.303

RFAlyse-Zertifikat

XL3t-69288

Reading No 14
 Mode M
 Time 2014-05-13 12:21
 Duration 120.93
 Units ppm
 Sigma Value 2
 Sequence Final
 Flags 3mm
 INV NR GNM GM 152
 OBJEKT Tafelgemaelde
 MATERIAL Holz Fassung Metall
 ANALYSESTELLE P13 Kruzifix Stifterin
 MESSAUFBAU STATIV anliegend
 FILTER 30 30 30 30
 User Login Stein



	ppm	±	Error
Ce	< LOD	:	149.873
La	< LOD	:	126.260
Ba	< LOD	:	132.082
Sb	< LOD	:	46.166
Sn	47.142	±	22.586
Cd	< LOD	:	19.064
Ag	< LOD	:	12.899
Bal	869778.375	±	1262.625
Nb	< LOD	:	27.324
Zr	< LOD	:	66.198
Y	< LOD	:	15.814
Sr	143.093	±	9.021
Rb	< LOD	:	36.811
Th	< LOD	:	928.430
Bi	< LOD	:	847.933
Au	< LOD	:	57.229
As	2253.995	±	109.629
Se	< LOD	:	27.206
Pb	8396.376	±	169.285
Hg	1434.704	±	44.890
Zn	171.493	±	25.850
Cu	203.122	±	29.233
Ni	< LOD	:	52.445
Co	< LOD	:	58.427
Fe	993.467	±	106.673
Mn	< LOD	:	139.070
Cr	< LOD	:	54.145
V	< LOD	:	39.906
Ti	< LOD	:	230.593
Ca	66501.258	±	1115.177
K	4320.816	±	249.667
Al	3916.806	±	828.166
P	3435.559	±	193.694
Si	15870.325	±	718.800
Cl	2730.881	±	83.945
S	19777.678	±	356.546
Mg	< LOD	:	10540.402

RFAlyse-Zertifikat

XL3t-69288



Reading No 15
Mode Mining
Time 2014-05-13 12:25
Duration 121.08
Units ppm
Sigma Value 2
Sequence Final
Flags 3mm
INV NR GNM GM 152
OBJEKT Tafelgemaelde
MATERIAL Holz Fassung Metall
ANALYSESTELLE P14 Kruzifix STifterin
MESSAUFBAU STATIV anliegend
FILTER 30 30 30 30
User Login Stein



	ppm	±	Error
Ce	< LOD	:	152.271
La	< LOD	:	125.860
Ba	< LOD	:	132.832
Sb	< LOD	:	52.850
Sn	61.933	±	23.440
Cd	27.954	±	13.702
Ag	< LOD	:	12.772
Bal	871242.375	±	1257.936
Nb	< LOD	:	27.503
Zr	< LOD	:	68.082
Y	< LOD	:	16.336
Sr	154.253	±	9.409
Rb	< LOD	:	37.359
Th	< LOD	:	953.618
Bi	< LOD	:	795.535
Au	< LOD	:	59.079
As	2164.044	±	110.706
Se	< LOD	:	23.378
Pb	8798.881	±	175.880
Hg	1545.728	±	46.882
Zn	162.284	±	25.953
Cu	233.774	±	30.824
Ni	< LOD	:	57.318
Co	< LOD	:	60.943
Fe	988.370	±	107.679
Mn	< LOD	:	166.307
Cr	< LOD	:	77.347
V	< LOD	:	99.188
Ti	1873.763	±	327.708
Ca	59920.863	±	1031.848
K	4477.042	±	271.148
Al	4300.861	±	817.517
P	2981.530	±	177.203
Si	19490.295	±	774.741
Cl	4828.143	±	117.106
S	16738.881	±	307.938
Mg	< LOD	:	11706.569

RFAnalyse-Zertifikat

XL3t-69288



Reading No 16
Mode Mining
Time 2014-05-13 12:31
Duration 121.47
Units ppm
Sigma Value 2
Sequence Final
Flags
INV NR GNM GM 152
OBJEKT Tafelgemaelde
MATERIAL Holz Fassung Metall
ANALYSESTELLE P15 Wappen Stifter
MESSAUFBAU STATIV anliegend
FILTER 30 30 30 30
User Login Stein



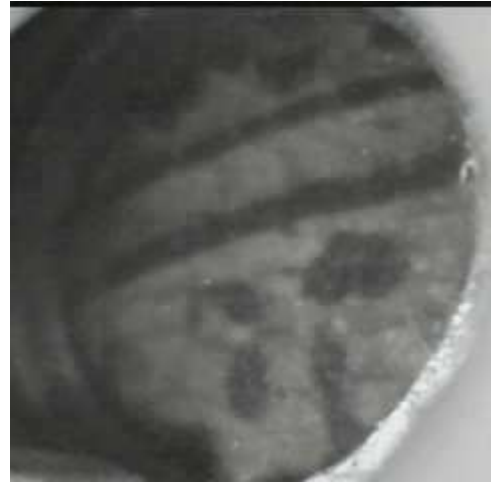
	ppm	±	Error
Ce	< LOD	:	158.224
La	< LOD	:	72.708
Ba	< LOD	:	77.746
Sb	< LOD	:	26.168
Sn	< LOD	:	17.170
Cd	25.054	±	7.425
Ag	414.402	±	14.367
Bal	858571.625	±	1056.115
Nb	< LOD	:	14.178
Zr	< LOD	:	54.015
Y	< LOD	:	13.494
Sr	< LOD	:	25.767
Rb	< LOD	:	24.824
Th	< LOD	:	774.174
Bi	< LOD	:	600.185
Au	< LOD	:	109.585
As	2785.213	±	90.925
Se	< LOD	:	25.033
Pb	7708.529	±	119.865
Hg	12937.021	±	168.649
Zn	709.869	±	44.753
Cu	91.644	±	20.300
Ni	< LOD	:	54.752
Co	< LOD	:	56.928
Fe	1855.352	±	101.164
Mn	145.675	±	80.579
Cr	< LOD	:	52.382
V	< LOD	:	32.632
Ti	< LOD	:	172.996
Ca	28021.361	±	409.011
K	2643.428	±	166.285
Al	4598.413	±	777.217
P	17228.078	±	319.645
Si	16057.991	±	579.976
Cl	3108.865	±	60.576
S	42913.750	±	528.331
Mg	< LOD	:	18127.861

RFAnalyse-Zertifikat

XL3t-69288



Reading No 17
Mode Mining
Time 2014-05-13 12:35
Duration 120.64
Units ppm
Sigma Value 2
Sequence Final
Flags
INV NR GNM GM 152
OBJEKT Tafelgemaelde
MATERIAL Holz Fassung Metall
ANALYSESTELLE P16 Gebetsnuss Stifter
MESSAUFBAU STATIV anliegend
FILTER 30 30 30 30
User Login Stein



	ppm	±	Error
Ce	< LOD	:	99.930
La	< LOD	:	45.797
Ba	< LOD	:	49.375
Sb	< LOD	:	18.089
Sn	112.494	±	9.243
Cd	16.819	±	4.861
Ag	380.398	±	10.042
Bal	903326.625	±	533.899
Nb	9.732	±	6.036
Zr	< LOD	:	32.522
Y	< LOD	:	7.171
Sr	144.093	±	4.101
Rb	< LOD	:	17.696
Th	< LOD	:	480.577
Bi	< LOD	:	461.504
Au	< LOD	:	12.538
As	1921.340	±	58.652
Se	< LOD	:	11.650
Pb	6313.544	±	74.921
Hg	< LOD	:	7.184
Zn	29.208	±	6.481
Cu	131.015	±	14.552
Ni	< LOD	:	32.750
Co	< LOD	:	30.412
Fe	938.678	±	55.959
Mn	< LOD	:	72.501
Cr	< LOD	:	25.800
V	< LOD	:	22.672
Ti	< LOD	:	89.343
Ca	52170.855	±	530.395
K	1969.894	±	132.648
Al	1971.606	±	517.592
P	994.218	±	104.087
Si	11040.400	±	407.528
Cl	2778.892	±	48.271
S	15677.972	±	184.962
Mg	< LOD	:	7506.942

RFAnalyse-Zertifikat

XL3t-69288



Reading No 18
Mode Mining
Time 2014-05-13 12:46
Duration 121.78
Units ppm
Sigma Value 2
Sequence Final
Flags
INV NR GNM GM 152
OBJEKT Tafelgemaelde
MATERIAL Holz Fassung Metall
ANALYSESTELLE P17 Krone Helena
MESSAUFBAU STATIV anliegend
FILTER 30 30 30 30
User Login Stein



	ppm	±	Error
Ce	< LOD	:	99.401
La	< LOD	:	45.455
Ba	< LOD	:	48.658
Sb	< LOD	:	17.533
Sn	9.943	±	6.272
Cd	12.937	±	4.705
Ag	11.887	±	3.292
Bal	798318.375	±	949.264
Nb	< LOD	:	3.309
Zr	< LOD	:	13.220
Y	< LOD	:	2.543
Sr	219.272	±	4.669
Rb	20.774	±	5.533
Th	< LOD	:	204.953
Bi	< LOD	:	154.768
Au	3955.716	±	54.802
As	217.459	±	18.874
Se	< LOD	:	9.540
Pb	717.402	±	16.349
Hg	< LOD	:	6.930
Zn	93.406	±	13.293
Cu	94.992	±	13.077
Ni	< LOD	:	31.038
Co	< LOD	:	36.992
Fe	2482.271	±	77.604
Mn	< LOD	:	74.646
Cr	91.897	±	17.714
V	< LOD	:	29.629
Ti	307.719	±	86.065
Ca	124389.633	±	755.706
K	1600.105	±	122.751
Al	3742.603	±	789.492
P	32399.838	±	352.835
Si	16791.066	±	618.028
Cl	739.073	±	29.346
S	13783.623	±	138.725
Mg	< LOD	:	11306.066