

Certificate of Verification

XL3t-69288

Reading No 1
Mode Mining
Time 2014-03-31 14:30
Duration 120.07
Units ppm
Sigma Value 2
Sequence Final
Flags
INV NR GNM GM 125
OBJEKT TAFELGEMAELDE
MATERIAL HOLZ FASSUNG METALL
ANALYSESTELLE P1 WIESE
MESSAUFBAU STATIV ANLIEGEND
FILTER m30lo30hi30li30
User Login Raquet



	ppm	±	Error
Ce	859.617	±	364.923
La	498.972	±	164.865
Ba	486.194	±	173.236
Sb	< LOD	:	95.446
Sn	12301.391	±	342.500
Cd	< LOD	:	32.488
Ag	53.743	±	15.823
Bal	747738.188	±	4286.448
Nb	311.087	±	87.566
Zr	< LOD	:	374.718
Y	< LOD	:	105.573
Sr	93.964	±	17.476
Rb	< LOD	:	211.212
Th	< LOD	:	4795.030
Bi	< LOD	:	4619.770
Au	< LOD	:	104.605
As	15537.892	±	560.008
Se	< LOD	:	95.595
Pb	132751.891	±	2997.719
Hg	< LOD	:	62.291
Zn	174.218	±	29.961
Cu	10144.765	±	260.337
Ni	143.694	±	66.686
Co	< LOD	:	149.674
Fe	3501.157	±	191.513
Mn	201.550	±	122.979
Cr	< LOD	:	69.813
V	< LOD	:	53.379
Ti	< LOD	:	256.784
Ca	30814.975	±	730.401
K	4282.587	±	316.301
Al	2470.461	±	907.718
P	1165.903	±	132.644
Si	12949.348	±	563.264
Cl	3539.153	±	99.443
S	19550.006	±	453.117
Mg	< LOD	:	14070.406

Supervised By: _____

Thermo Fisher Scientific
900 Middlesex Turnpike
Billerica, MA 01821

Certificate of Verification

XL3t-69288

Reading No 2
Mode Mining
Time 2014-03-31 14:36
Duration 120.79
Units ppm
Sigma Value 2
Sequence Final
Flags
INV NR GNM GM 125
OBJEKT TAFELGEMAELEN
MATERIAL HOLZ FASSUNG METALL
ANALYSESTELLE P2 TUCH
MESSAUFBAU STATIV ANLIEGEND
FILTER m30lo30hi30li30
User Login Raquet



	ppm	±	Error
Ce	2539.911	±	450.446
La	1185.010	±	201.144
Ba	998.606	±	207.075
Sb	< LOD	:	90.508
Sn	448.069	±	47.255
Cd	< LOD	:	30.505
Ag	< LOD	:	29.579
Bal	695522.625	±	5966.862
Nb	397.691	±	121.888
Zr	< LOD	:	503.432
Y	< LOD	:	142.435
Sr	102.017	±	23.090
Rb	< LOD	:	297.550
Th	< LOD	:	6262.455
Bi	< LOD	:	4780.706
Au	3211.089	±	174.207
As	23664.139	±	773.925
Se	< LOD	:	119.426
Pb	177812.000	±	4491.478
Hg	< LOD	:	85.968
Zn	535.681	±	43.527
Cu	2464.744	±	104.323
Ni	311.248	±	76.062
Co	167.920	±	69.988
Fe	2025.894	±	166.844
Mn	383.375	±	143.500
Cr	< LOD	:	77.126
V	< LOD	:	57.788
Ti	< LOD	:	256.947
Ca	19922.723	±	543.448
K	1513.111	±	230.173
Al	3804.902	±	1084.976
P	9787.247	±	310.087
Si	10296.770	±	531.602
Cl	4094.462	±	118.564
S	38359.281	±	878.289
Mg	< LOD	:	19570.639

Supervised By: _____

Certificate of Verification

XL3t-69288

Reading No 3
Mode Mining
Time 2014-03-31 14:42
Duration 123.24
Units ppm
Sigma Value 2
Sequence Final
Flags
INV NR GNM GM 125
OBJEKT TAFELGEMAELEN
MATERIAL HOLZ FASSUNG METALL
ANALYSESTELLE P3 NIMBUS MAGDA
MESSAUFBAU STATIV ANLIEGEND
FILTER m30lo30hi30li30
User Login Raquet



	ppm	±	Error
Ce	< LOD	:	383.546
La	263.803	±	116.253
Ba	221.765	±	122.142
Sb	< LOD	:	56.178
Sn	550.523	±	38.533
Cd	< LOD	:	19.199
Ag	1374.343	±	46.979
Bal	807772.875	±	2564.947
Nb	162.629	±	56.464
Zr	< LOD	:	257.414
Y	< LOD	:	69.317
Sr	183.448	±	14.865
Rb	< LOD	:	137.885
Th	< LOD	:	3420.309
Bi	< LOD	:	3083.907
Au	313.467	±	74.215
As	12665.896	±	416.847
Se	< LOD	:	33.738
Pb	85603.914	±	1723.501
Hg	< LOD	:	57.161
Zn	468.373	±	41.548
Cu	25718.072	±	508.527
Ni	< LOD	:	78.170
Co	198.931	±	59.798
Fe	2721.465	±	146.270
Mn	274.106	±	104.386
Cr	< LOD	:	47.882
V	< LOD	:	37.675
Ti	< LOD	:	195.670
Ca	33017.820	±	657.140
K	3171.580	±	263.631
Al	1336.910	±	680.893
P	2646.058	±	128.980
Si	3968.295	±	302.773
Cl	3902.534	±	92.893
S	12782.274	±	268.207
Mg	< LOD	:	11131.207

Supervised By: _____

Certificate of Verification

XL3t-69288

Reading No 4
Mode Mining
Time 2014-03-31 14:46
Duration 120.03
Units ppm
Sigma Value 2
Sequence Final
Flags
INV NR GNM GM 125
OBJEKT TAFELGEMAELEN
MATERIAL HOLZ FASSUNG METALL
ANALYSESTELLE P4 GUERTEL
MESSAUFBAU STATIV ANLIEGEND
FILTER m30lo30hi30li30
User Login Raquet



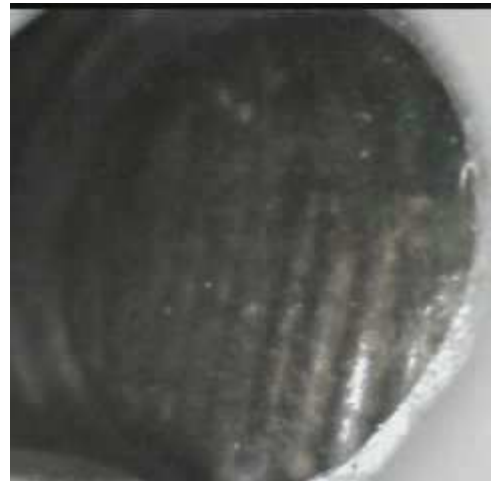
	ppm	±	Error
Ce	< LOD	:	246.864
La	160.637	±	75.937
Ba	134.212	±	80.083
Sb	< LOD	:	44.627
Sn	100.430	±	16.120
Cd	< LOD	:	13.442
Ag	60.939	±	8.742
Bal	831268.688	±	1516.660
Nb	< LOD	:	35.797
Zr	< LOD	:	120.076
Y	< LOD	:	31.013
Sr	503.771	±	15.218
Rb	103.004	±	42.424
Th	< LOD	:	1683.469
Bi	< LOD	:	1452.345
Au	13007.854	±	237.354
As	8492.257	±	218.809
Se	< LOD	:	33.922
Pb	31463.875	±	523.185
Hg	< LOD	:	33.118
Zn	452.156	±	35.453
Cu	1665.051	±	59.856
Ni	< LOD	:	100.520
Co	< LOD	:	92.752
Fe	1282.150	±	94.043
Mn	165.464	±	91.005
Cr	121.284	±	32.026
V	< LOD	:	35.626
Ti	< LOD	:	165.012
Ca	71667.453	±	1057.929
K	1249.427	±	161.723
Al	< LOD	:	1103.853
P	21873.420	±	416.091
Si	< LOD	:	503.128
Cl	5119.656	±	99.780
S	10123.156	±	184.466
Mg	< LOD	:	11887.536

Supervised By: _____

Certificate of Verification

XL3t-69288

Reading No 5
Mode Mining
Time 2014-03-31 14:50
Duration 120.08
Units ppm
Sigma Value 2
Sequence Final
Flags
INV NR GNM GM 125
OBJEKT TAFELGEMAELEN
MATERIAL HOLZ FASSUNG METALL
ANALYSESTELLE P5 PRESSBROKAT
MESSAUFBAU STATIV ANLIEGEND
FILTER m30lo30hi30li30
User Login Raquet



	ppm	±	Error
Ce	< LOD	:	272.615
La	225.059	±	82.881
Ba	310.003	±	88.339
Sb	306.809	±	33.165
Sn	3502.974	±	76.866
Cd	20.260	±	11.370
Ag	28.794	±	7.911
Bal	872937.750	±	1315.872
Nb	66.703	±	31.859
Zr	< LOD	:	154.383
Y	< LOD	:	40.332
Sr	269.454	±	11.971
Rb	< LOD	:	130.880
Th	< LOD	:	2111.249
Bi	< LOD	:	1732.157
Au	5235.854	±	131.101
As	8721.968	±	258.295
Se	< LOD	:	36.173
Pb	46170.703	±	792.419
Hg	< LOD	:	32.452
Zn	311.831	±	28.060
Cu	2605.370	±	81.152
Ni	158.934	±	49.684
Co	1483.141	±	96.704
Fe	6147.574	±	202.039
Mn	235.024	±	97.446
Cr	< LOD	:	48.666
V	< LOD	:	64.018
Ti	< LOD	:	327.056
Ca	26130.221	±	500.772
K	3518.778	±	222.117
Al	< LOD	:	1265.834
P	2834.763	±	127.906
Si	3489.751	±	294.296
Cl	5061.677	±	104.778
S	9708.513	±	191.342
Mg	< LOD	:	10785.863

Supervised By: _____

Thermo Fisher Scientific
900 Middlesex Turnpike
Billerica, MA 01821

Certificate of Verification

XL3t-69288

Reading No 6
Mode Mining
Time 2014-03-31 14:55
Duration 121.54
Units ppm
Sigma Value 2
Sequence Final
Flags
INV NR GNM GM 125
OBJEKT TAFELGEMAELEN
MATERIAL HOLZ FASSUNG METALL
ANALYSESTELLE P6 BROKAT NEU
MESSAUFBAU STATIV ANLIEGEND
FILTER m30lo30hi30li30
User Login Raquet



	ppm	±	Error
Ce	466.638	±	241.222
La	331.232	±	109.200
Ba	358.828	±	115.352
Sb	< LOD	:	53.331
Sn	46.795	±	20.170
Cd	< LOD	:	17.913
Ag	55.901	±	11.245
Bal	803003.875	±	2498.627
Nb	109.942	±	52.058
Zr	< LOD	:	241.285
Y	< LOD	:	65.136
Sr	330.766	±	17.417
Rb	< LOD	:	203.637
Th	< LOD	:	3213.413
Bi	< LOD	:	2691.431
Au	9179.841	±	230.618
As	13544.554	±	403.817
Se	< LOD	:	42.305
Pb	73865.852	±	1485.123
Hg	< LOD	:	47.974
Zn	353.485	±	35.622
Cu	534.236	±	43.425
Ni	183.725	±	57.231
Co	< LOD	:	176.923
Fe	20511.840	±	495.414
Mn	1108.317	±	144.881
Cr	125.027	±	39.679
V	< LOD	:	85.316
Ti	< LOD	:	277.194
Ca	26458.148	±	552.743
K	1760.063	±	194.162
Al	1628.811	±	757.366
P	19950.559	±	449.083
Si	3691.618	±	391.134
Cl	6544.895	±	145.725
S	15358.224	±	318.322
Mg	< LOD	:	16604.738

Supervised By: _____

Certificate of Verification

XL3t-69288

Reading No 7
Mode Mining
Time 2014-03-31 15:00
Duration 121.47
Units ppm
Sigma Value 2
Sequence Final
Flags
INV NR GNM GM 125
OBJEKT TAFELGEMAELDE
MATERIAL HOLZ FASSUNG METALL
ANALYSESTELLE P7 RUESTUNG RECHTS
MESSAUFBAU STATIV ANLIEGEND
FILTER m30lo30hi30li30
User Login Raquet



	ppm	±	Error
Ce	< LOD	:	293.000
La	229.056	±	88.577
Ba	258.098	±	93.804
Sb	< LOD	:	46.797
Sn	36.064	±	22.139
Cd	< LOD	:	17.337
Ag	1402.759	±	38.664
Bal	857863.250	±	1451.532
Nb	71.904	±	33.089
Zr	< LOD	:	158.737
Y	< LOD	:	41.625
Sr	441.278	±	15.362
Rb	< LOD	:	81.780
Th	< LOD	:	2173.655
Bi	< LOD	:	2071.542
Au	< LOD	:	51.859
As	11525.410	±	303.355
Se	< LOD	:	29.450
Pb	49434.191	±	890.493
Hg	< LOD	:	31.605
Zn	237.796	±	19.318
Cu	1128.758	±	51.561
Ni	123.254	±	45.843
Co	219.877	±	49.078
Fe	1630.454	±	108.611
Mn	180.039	±	93.726
Cr	45.223	±	27.590
V	< LOD	:	38.104
Ti	< LOD	:	161.044
Ca	24767.752	±	512.515
K	2973.742	±	267.942
Al	1450.801	±	760.045
P	2629.397	±	158.763
Si	6534.171	±	415.558
Cl	13406.495	±	275.814
S	22808.684	±	455.918
Mg	< LOD	:	13102.162

Certificate of Verification

XL3t-69288

Reading No 8
Mode Mining
Time 2014-03-31 15:05
Duration 121.70
Units ppm
Sigma Value 2
Sequence Final
Flags
INV NR GNM GM 125
OBJEKT TAFELGEMAELDE
MATERIAL HOLZ FASSUNG METALL
ANALYSESTELLE P8 RUESTUNG LINKS
MESSAUFBAU STATIV ANLIEGEND
FILTER m30lo30hi30li30
User Login Raquet



	ppm	±	Error
Ce	< LOD	:	408.251
La	236.496	±	123.563
Ba	248.012	±	130.439
Sb	< LOD	:	59.886
Sn	65.759	±	33.913
Cd	< LOD	:	20.751
Ag	2326.671	±	71.034
Bal	823130.250	±	2435.605
Nb	126.366	±	58.097
Zr	< LOD	:	261.497
Y	< LOD	:	70.826
Sr	274.600	±	16.627
Rb	< LOD	:	156.191
Th	< LOD	:	3438.988
Bi	< LOD	:	2645.198
Au	< LOD	:	80.515
As	15620.029	±	447.517
Se	< LOD	:	41.079
Pb	85532.156	±	1745.881
Hg	< LOD	:	48.934
Zn	319.651	±	26.091
Cu	1738.056	±	73.148
Ni	171.464	±	55.914
Co	170.481	±	56.537
Fe	1951.632	±	134.611
Mn	254.977	±	108.938
Cr	< LOD	:	72.218
V	< LOD	:	48.287
Ti	< LOD	:	191.507
Ca	22878.697	±	522.938
K	2925.614	±	308.258
Al	1620.880	±	825.729
P	2582.474	±	162.311
Si	7936.250	±	453.387
Cl	5145.552	±	128.264
S	24145.809	±	516.926
Mg	< LOD	:	17840.920

Supervised By: _____